

Anti-CAMKK2 antibody ab96531

★★★★★ [1 Abreviews](#) [6 References](#) [画像数 2](#)

製品の概要

製品名	Anti-CAMKK2 antibody
製品の詳細	Rabbit polyclonal to CAMKK2
由来種	Rabbit
アプリケーション	適用あり: WB, ICC/IF
種交差性	交差種: Human
免疫原	Synthetic peptide corresponding to a region within amino acids 1-15 of CAMKK2 isoform 5 (NP_705720)
特記事項	<p>The Life Science industry has been in the grips of a reproducibility crisis for a number of years. Abcam is leading the way in addressing this with our range of recombinant monoclonal antibodies and knockout edited cell lines for gold-standard validation. Please check that this product meets your needs before purchasing.</p> <p>If you have any questions, special requirements or concerns, please send us an inquiry and/or contact our Support team ahead of purchase. Recommended alternatives for this product can be found below, along with publications, customer reviews and Q&As</p>

製品の特性

製品の状態	Liquid
保存方法	Shipped at 4°C. Upon delivery aliquot and store at -20°C or -80°C. Avoid repeated freeze / thaw cycles.
バッファー	pH: 7.00 Preservative: 0.025% Proclin 300 Constituents: 79% PBS, 20% Glycerol (glycerin, glycerine)
精製度	Immunogen affinity purified
ポリ/モノ	ポリクローナル
アイソタイプ	IgG

アプリケーション

The Abpromise guarantee

Abpromise保証は、次のテスト済みアプリケーションにおけるab96531の使用に適用されます

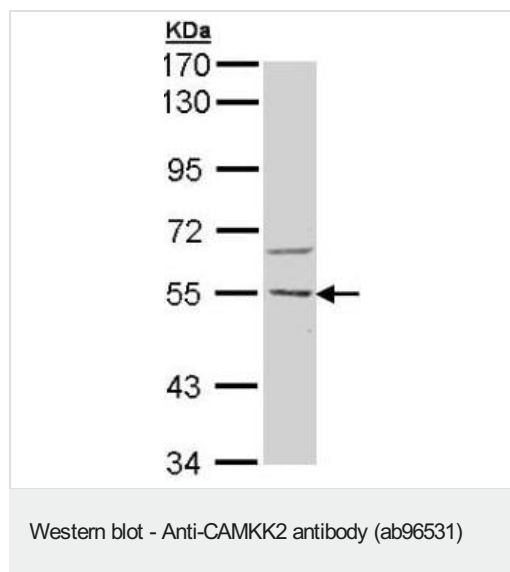
アプリケーションノートには、推奨の開始希釈率がありますが、適切な希釈率につきましてはご確認ください。

アプリケーション	Abreviews	特記事項
WB		1/500 - 1/3000. Predicted molecular weight: 55 kDa.
ICC/IF		1/100 - 1/200.

ターゲット情報

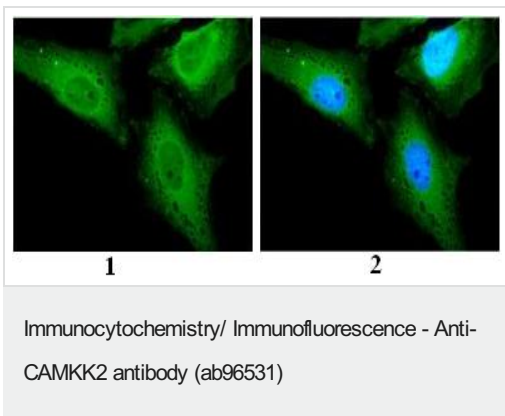
機能	Calcium/calmodulin-dependent protein kinase belonging to a proposed calcium-triggered signaling cascade involved in a number of cellular processes. Isoform 1, isoform 2 and isoform 3 phosphorylate CAMK1 and CAMK4. Isoform 3 phosphorylates CAMK1D. Isoform 4, isoform 5 and isoform 6 lacking part of the calmodulin-binding domain are inactive. Seems to be involved in hippocampal activation of CREB1.
組織特異性	Ubiquitously expressed with higher levels in the brain. Intermediate levels are detected in spleen, prostate, thyroid and leukocytes. The lowest level is in lung.
配列類似性	Belongs to the protein kinase superfamily. Ser/Thr protein kinase family. Contains 1 protein kinase domain.
ドメイン	The autoinhibitory domain overlaps with the calmodulin binding region and may be involved in intrasteric autoinhibition. The RP domain (arginine/proline-rich) is involved in the recognition of CAMK1 and CAMK4 as substrates.
翻訳後修飾	Autophosphorylated.
細胞内局在	Cytoplasm.

画像



Anti-CAMKK2 antibody (ab96531) at 1/500 dilution (10% SDS PAGE) + H1299 whole cell lysate at 30 µg

Predicted band size: 55 kDa



Immunofluorescence analysis of paraformaldehyde fixed HeLa using ab96531 at 1/200 dilution: (1) without DNA probe; (2) merged with DNA probe.

Please note: All products are "FOR RESEARCH USE ONLY. NOT FOR USE IN DIAGNOSTIC PROCEDURES"

Our Abpromise to you: Quality guaranteed and expert technical support

- Replacement or refund for products not performing as stated on the datasheet
- Valid for 12 months from date of delivery
- Response to your inquiry within 24 hours
- We provide support in Chinese, English, French, German, Japanese and Spanish
- Extensive multi-media technical resources to help you
- We investigate all quality concerns to ensure our products perform to the highest standards

If the product does not perform as described on this datasheet, we will offer a refund or replacement. For full details of the Abpromise, please visit <https://www.abcam.co.jp/abpromise> or contact our technical team.

Terms and conditions

- Guarantee only valid for products bought direct from Abcam or one of our authorized distributors