

Anti-CAMKIV (phospho T196 + T200) antibody ab59424

★★★★★ [1 Abreviews](#) [11 References](#) [画像数 1](#)

製品の概要

製品名	Anti-CAMKIV (phospho T196 + T200) antibody
製品の詳細	Rabbit polyclonal to CAMKIV (phospho T196 + T200)
由来種	Rabbit
アプリケーション	適用あり: IHC-P
種交差性	交差種: Human
免疫原	Synthetic peptide corresponding to Human CAMKIV aa 150-250 (internal sequence) (phospho T196 + T200). (M-K-TP-V-C). Database link: Q16566
特記事項	<p>The Life Science industry has been in the grips of a reproducibility crisis for a number of years. Abcam is leading the way in addressing this with our range of recombinant monoclonal antibodies and knockout edited cell lines for gold-standard validation. Please check that this product meets your needs before purchasing.</p> <p>If you have any questions, special requirements or concerns, please send us an inquiry and/or contact our Support team ahead of purchase. Recommended alternatives for this product can be found below, along with publications, customer reviews and Q&As</p>

製品の特性

製品の状態	Liquid
保存方法	Shipped at 4°C. Store at -20°C. Stable for 12 months at -20°C.
バッファー	pH: 7.40 Preservative: 0.02% Sodium azide Constituents: PBS, 50% Glycerol (glycerin, glycerine), 0.87% Sodium chloride
精製度	Immunogen affinity purified
特記事項 (精製)	The antibody against non-phosphopeptide was removed by chromatography using non-phosphopeptide corresponding to the phosphorylation site.
ポリ/モノ	ポリクローナル
アイソタイプ	IgG

アプリケーション

The Abpromise guarantee

Abpromise保証は、次のテスト済みアプリケーションにおけるab59424の使用に適用されます

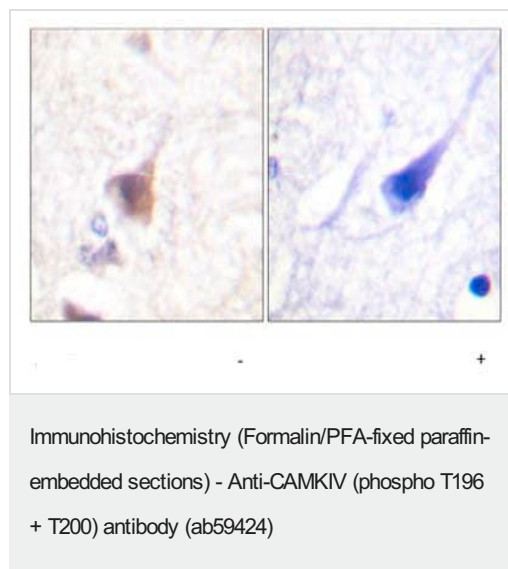
アプリケーションノートには、推奨の開始希釈率がありますが、適切な希釈率につきましてはご検討ください。

アプリケーション	Abreviews	特記事項
IHC-P		1/50 - 1/100.

ターゲット情報

機能	Calcium/calmodulin-dependent protein kinase belonging to a proposed calcium-triggered signaling cascade. May be involved in transcriptional regulation. May be involved in regulation of microtubule dynamics. In vitro, phosphorylates CREB1, CREBBP, PRM2, MEF2A, MEF2D and STMN1/OP18. May be involved in spermatogenesis. May play a role in the consolidation/retention of hippocampus-dependent long-term memory.
組織特異性	Expressed in epithelial ovarian cancer tissue.
配列類似性	Belongs to the protein kinase superfamily. CAMK Ser/Thr protein kinase family. CaMK subfamily. Contains 1 protein kinase domain.
翻訳後修飾	Autophosphorylated and phosphorylated by CAMKK1 and CAMKK2 (By similarity). Dephosphorylated by serine/threonine protein phosphatase 2A, probably on Thr-200.
細胞内局在	Cytoplasm. Nucleus. Substantial localization in certain neuronal nuclei. In spermatids associated with chromatin and nuclear matrix.

画像



ab59424, at a 1/50 dilution, staining paraffin embedded human brain tissue sections by Immunohistochemistry in the absence (left image) or presence (right image) of the phosphopeptide.

Please note: All products are "FOR RESEARCH USE ONLY. NOT FOR USE IN DIAGNOSTIC PROCEDURES"

Our Abpromise to you: Quality guaranteed and expert technical support

- Replacement or refund for products not performing as stated on the datasheet

- Valid for 12 months from date of delivery
- Response to your inquiry within 24 hours
- We provide support in Chinese, English, French, German, Japanese and Spanish
- Extensive multi-media technical resources to help you
- We investigate all quality concerns to ensure our products perform to the highest standards

If the product does not perform as described on this datasheet, we will offer a refund or replacement. For full details of the Abpromise, please visit <https://www.abcam.co.jp/abpromise> or contact our technical team.

Terms and conditions

- Guarantee only valid for products bought direct from Abcam or one of our authorized distributors