

Anti-Calsequestrin 2 + Calsequestrin 1 antibody ab3516

★★★★★ **4 Abreviews** **69 References** **画像数 7**

製品の概要

製品名	Anti-Calsequestrin 2 + Calsequestrin 1 antibody
製品の詳細	Rabbit polyclonal to Calsequestrin 2 + Calsequestrin 1
由来種	Rabbit
特異性	This antibody recognizes both cardiac and skeletal muscle calsequestrin.
アプリケーション	適用あり: ICC/IF, WB, IP, IHC-P
種交差性	交差種: Mouse, Rat, Sheep, Rabbit, Dog, Human, Pig, Rainbow trout
免疫原	Full length native protein (purified) corresponding to Dog Calsequestrin 2. The immunogen is purified canine cardiac calsequestrin.
特記事項	<p>The Life Science industry has been in the grips of a reproducibility crisis for a number of years. Abcam is leading the way in addressing this with our range of recombinant monoclonal antibodies and knockout edited cell lines for gold-standard validation. Please check that this product meets your needs before purchasing.</p> <p>If you have any questions, special requirements or concerns, please send us an inquiry and/or contact our Support team ahead of purchase. Recommended alternatives for this product can be found below, along with publications, customer reviews and Q&As</p>

製品の特性

製品の状態	Liquid
保存方法	Shipped at 4°C. Store at +4°C short term (1-2 weeks). Upon delivery aliquot. Store at -20°C or -80°C. Avoid freeze / thaw cycle.
バッファー	Preservative: 0.05% Sodium azide
精製度	Whole antiserum
ポリ/モノ	ポリクローナル
アイソタイプ	IgG

アプリケーション

The Abpromise guarantee **Abpromise保証は、次のテスト済みアプリケーションにおけるab3516の使用に適用されます**
 アプリケーションノートには、推奨の開始希釈率がありますが、適切な希釈率につきましてはご検討ください。

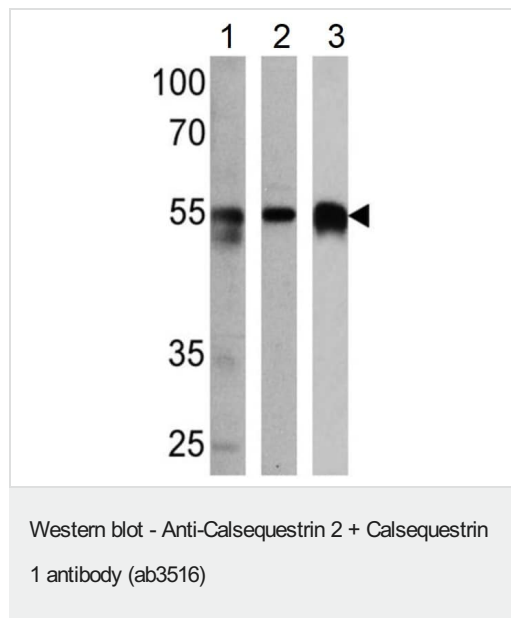
アプリケーション	Abreviews	特記事項
ICC/IF	★★★★★ (1)	Use at an assay dependent concentration.
WB	★★★★★ (3)	1/1000 - 1/10000. This antibody detects an ~55 kDa protein representing Calsequestrin from canine cardiac extract. Additional bands at 97 kDa may be observed and have been reported to be Calsequestrin-like proteins.
IP		Use at an assay dependent concentration.
IHC-P		1/100 - 1/500.

ターゲット情報

細胞内局在

Calsequestrin 2: Sarcoplasmic reticulum lumen. This isoform of calsequestrin occurs in the sarcoplasmic reticulum's terminal cisternae luminal spaces of cardiac and slow skeletal muscle cells. Calsequestrin 1: Sarcoplasmic reticulum lumen. Mitochondrion. This isoform of calsequestrin occurs in the sarcoplasmic reticulum's terminal cisternae luminal spaces of fast skeletal muscle cells. Also mitochondrial according to PubMed:7945294.

画像



All lanes : Anti-Calsequestrin 2 + Calsequestrin 1 antibody (ab3516) at 1/5000 dilution

Lane 1 : RD (Human muscle rhabdomyosarcoma cell line) whole cell lysate

Lane 2 : L6 (Rat skeletal muscle cell line) whole cell lysate

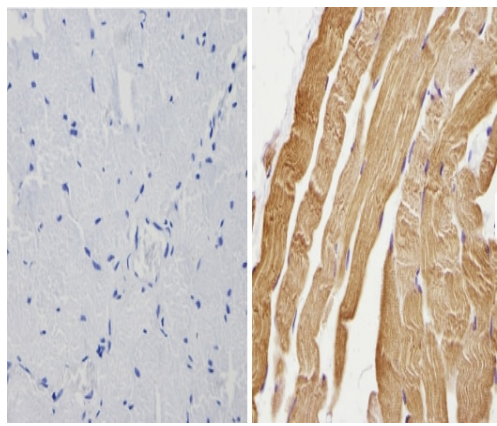
Lane 3 : Mouse heart tissue lysate

Lysates/proteins at 25 µg per lane.

Secondary

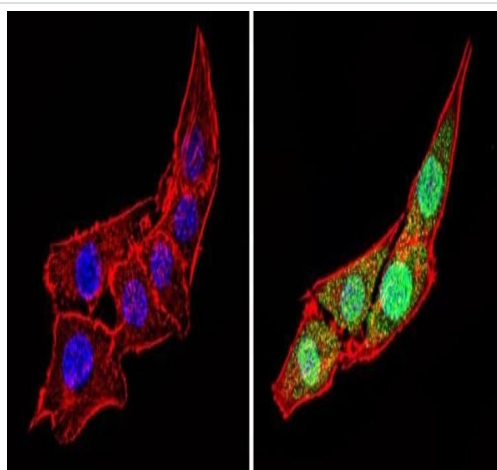
All lanes : HRP-conjugated secondary antibody

Observed band size: 55 kDa



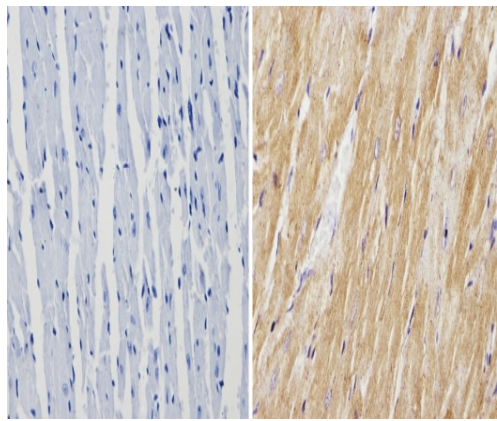
Immunohistochemistry (Formalin/PFA-fixed paraffin-embedded sections) - Anti-Calsequestrin 2 + Calsequestrin 1 antibody (ab3516)

ab3516 labelling Calsequestrin in the cytoplasm of human skeletal muscle tissue (right) compared with a negative control (left) by Immunohistochemistry (formalin/PFA-fixed paraffin-embedded sections). To expose target proteins, antigen retrieval method was performed using 10mM sodium citrate (pH 6.0) microwaved for 8-15 min. Tissues were blocked in 3% H₂O₂-methanol for 15 min at room temperature, washed with ddH₂O and PBS. Tissue sections were incubated with primary antibody (1:200 in 3% BSA-PBS) overnight at 4°C. A HRP-conjugated anti-rabbit was used as the secondary antibody, followed by colorimetric detection using a DAB kit. Tissues were counterstained with hematoxylin and dehydrated with ethanol and xylene to prep for mounting.



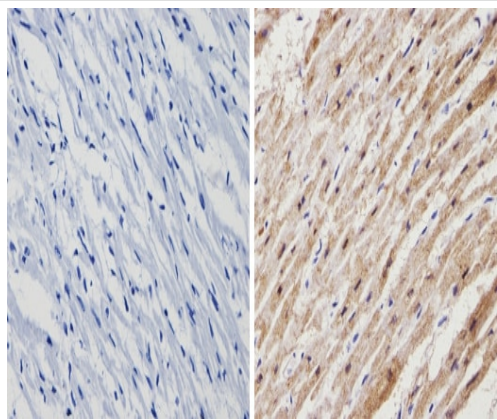
Immunocytochemistry/ Immunofluorescence - Anti-Calsequestrin 2 + Calsequestrin 1 antibody (ab3516)

Immunofluorescent analysis of Calsequestrin (green) showing staining in the cytoplasm and nucleus of C2C12 (Mouse myoblast cell line) cells (right) compared to a negative control without primary antibody (left). Formalin-fixed cells were permeabilized with 0.1% Triton X-100 in TBS for 5-10 minutes and blocked with 3% BSA-PBS for 30 minutes at room temperature. Cells were probed with ab3516 in 3% BSA-PBS at a dilution of 1/100 and incubated overnight at 4 °C in a humidified chamber. Cells were washed with PBST and incubated with a DyLight-conjugated secondary antibody in PBS at room temperature in the dark. F-actin (red) was stained with a fluorescent red phalloidin and nuclei (blue) were stained with Hoechst or DAPI. Images were taken at a magnification of 60x.



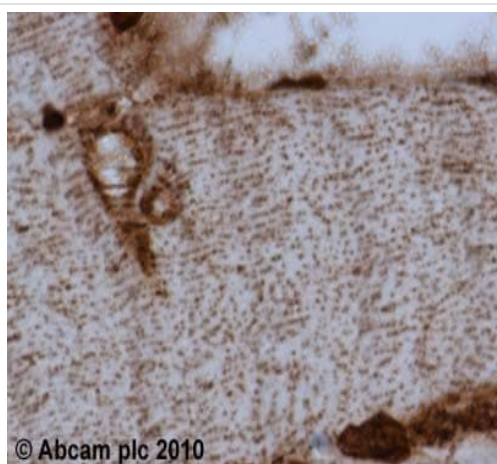
Immunohistochemistry (Formalin/PFA-fixed paraffin-embedded sections) - Anti-Calsequestrin 2 + Calsequestrin 1 antibody (ab3516)

ab3516 labelling Calsequestrin in the cytoplasm of mouse heart tissue (right) compared with a negative control (left) by Immunohistochemistry (formalin/PFA-fixed paraffin-embedded sections). To expose target proteins, antigen retrieval method was performed using 10mM sodium citrate (pH 6.0) microwaved for 8-15 min. Following antigen retrieval, tissues were blocked in 3% H₂O₂-methanol for 15 min at room temperature, washed with ddH₂O and PBS. Tissue sections were incubated with primary antibody (1:200 in 3% BSA-PBS) overnight at 4°C. A HRP-conjugated anti-rabbit was used as the secondary antibody, followed by colorimetric detection using a DAB kit. Tissues were counterstained with hematoxylin and dehydrated with ethanol and xylene to prep for mounting.



Immunohistochemistry (Formalin/PFA-fixed paraffin-embedded sections) - Anti-Calsequestrin 2 + Calsequestrin 1 antibody (ab3516)

ab3516 labelling Calsequestrin in the cytoplasm of human heart tissue (right) compared with a negative control (left) by Immunohistochemistry (formalin/PFA-fixed paraffin-embedded sections). To expose target proteins, antigen retrieval method was performed using 10mM sodium citrate (pH 6.0) microwaved for 8-15 min. Following antigen retrieval, tissues were blocked in 3% H₂O₂-methanol for 15 min at room temperature, washed with ddH₂O and PBS. Tissue sections were incubated with primary antibody (1:200 in 3% BSA-PBS) overnight at 4°C. A HRP-conjugated anti-rabbit was used as the secondary antibody, followed by colorimetric detection using a DAB kit. Tissues were counterstained with hematoxylin and dehydrated with ethanol and xylene to prep for mounting.

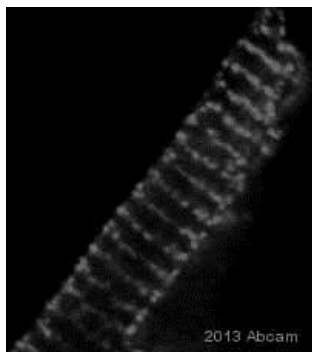


Immunohistochemistry (Formalin/PFA-fixed paraffin-embedded sections) - Anti-Calsequestrin 2 + Calsequestrin 1 antibody (ab3516)

ab3516 (1µg/ml) staining Calsequestrin in human skeletal muscle using an automated system (DAKO Autostainer Plus). Using this protocol there is strong staining of discrete organelles within the cytoplasm.

Sections were rehydrated and antigen retrieved with the Dako 3 in 1 AR buffer EDTA pH 9.0 in a DAKO PT link. Slides were peroxidase blocked in 3% H₂O₂ in methanol for 10 mins. They were then blocked with Dako Protein block for 10 minutes (containing casein 0.25% in PBS) then incubated with primary antibody for 20 min and detected with Dako envision flex amplification kit for 30 minutes. Colorimetric detection was completed with Diaminobenzidine for 5 minutes. Slides were counterstained with Haematoxylin and coverslipped under DePeX. Please note that, for manual staining, optimization of primary antibody concentration and incubation time is recommended.

Signal amplification may be required.



ab3516 staining Calsequestrin in mouse myocyte cell by ICC/IF (Immunocytochemistry/immunofluorescence). Cells were fixed with formaldehyde and blocked with 10% serum for 1 hour at 25°C. Samples were incubated with primary antibody (1/50 in serum) for 18 hours at 4°C. An Alexa Fluor®488-conjugated Goat anti-rabbit IgG polyclonal (1/1000) was used as the secondary antibody.

Immunocytochemistry/ Immunofluorescence - Anti-Calsequestrin 2 + Calsequestrin 1 antibody (ab3516)

This image is courtesy of an anonymous Abreview

Please note: All products are "FOR RESEARCH USE ONLY. NOT FOR USE IN DIAGNOSTIC PROCEDURES"

Our Abpromise to you: Quality guaranteed and expert technical support

- Replacement or refund for products not performing as stated on the datasheet
- Valid for 12 months from date of delivery
- Response to your inquiry within 24 hours
- We provide support in Chinese, English, French, German, Japanese and Spanish
- Extensive multi-media technical resources to help you
- We investigate all quality concerns to ensure our products perform to the highest standards

If the product does not perform as described on this datasheet, we will offer a refund or replacement. For full details of the Abpromise, please visit <https://www.abcam.co.jp/abpromise> or contact our technical team.

Terms and conditions

- Guarantee only valid for products bought direct from Abcam or one of our authorized distributors