

Anti-Calreticulin antibody - ER Marker ab2907

★★★★★ **16 Abreviews** **229 References** 画像数 10

製品の概要

製品名	Anti-Calreticulin antibody - ER Marker
製品の詳細	Rabbit polyclonal to Calreticulin - ER Marker
由来種	Rabbit
アプリケーション	適用あり: ICC/IF, WB
種交差性	交差種: Mouse, Rat, Human
免疫原	Recombinant full length protein corresponding to Human Calreticulin.
ポジティブ・コントロール	WB: HL-60, LNCaP, HeLa and MCF-7 cell lysates; Mouse and rat liver tissue lysates; Mouse skeletal muscle whole cell lysate. ICC/IF: A431, HeLa, U2OS, HepG2 and HMVEC cells.
特記事項	<p>The Life Science industry has been in the grips of a reproducibility crisis for a number of years. Abcam is leading the way in addressing this with our range of recombinant monoclonal antibodies and knockout edited cell lines for gold-standard validation. Please check that this product meets your needs before purchasing.</p> <p>If you have any questions, special requirements or concerns, please send us an inquiry and/or contact our Support team ahead of purchase. Recommended alternatives for this product can be found below, along with publications, customer reviews and Q&As</p>

製品の特性

製品の状態	Liquid
保存方法	Shipped at 4°C. Store at +4°C short term (1-2 weeks). Upon delivery aliquot. Store at -20°C or -80°C. Avoid freeze / thaw cycle.
バッファー	Preservative: 0.05% Sodium azide
精製度	Whole antiserum
ポリ/モノ	ポリクローナル
アイソタイプ	IgG

アプリケーション

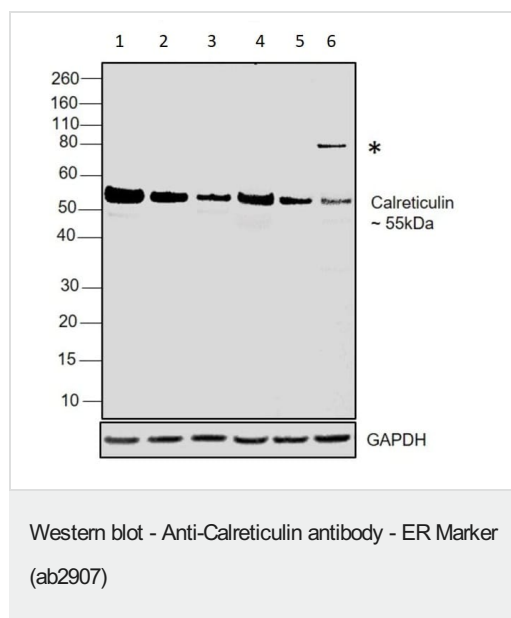
The Abpromise guarantee **Abpromise保証は、** 次のテスト済みアプリケーションにおけるab2907の使用に適用されます
アプリケーションノートには、推奨の開始希釈率がありますが、適切な希釈率につきましてはご検討ください。

アプリケーション	Abreviews	特記事項
ICC/IF	★★★★★ (8)	Use at an assay dependent concentration.
WB	★★★★★ (4)	1/1000.

ターゲット情報

機能	Molecular calcium-binding chaperone promoting folding, oligomeric assembly and quality control in the ER via the calreticulin/calnexin cycle. This lectin interacts transiently with almost all of the monoglucosylated glycoproteins that are synthesized in the ER. Interacts with the DNA-binding domain of NR3C1 and mediates its nuclear export.
配列類似性	Belongs to the calreticulin family.
ドメイン	Can be divided into a N-terminal globular domain, a proline-rich P-domain forming an elongated arm-like structure and a C-terminal acidic domain. The P-domain binds one molecule of calcium with high affinity, whereas the acidic C-domain binds multiple calcium ions with low affinity. The interaction with glycans occurs through a binding site in the globular lectin domain. The zinc binding sites are localized to the N-domain. Associates with PDIA3 through the tip of the extended arm formed by the P-domain.
細胞内局在	Endoplasmic reticulum lumen. Cytoplasm > cytosol. Secreted > extracellular space > extracellular matrix. Cell surface. Also found in cell surface (T cells), cytosol and extracellular matrix. Associated with the lytic granules in the cytolytic T-lymphocytes.

画像



All lanes : Anti-Calreticulin antibody - ER Marker (ab2907) at 1/1000 dilution

Lane 1 : HL-60 cell lysate

Lane 2 : LNCaP cell lysate

Lane 3 : HeLa cell lysate

Lane 4 : MCF-7 cell lysate

Lane 5 : Mouse liver tissue lysate

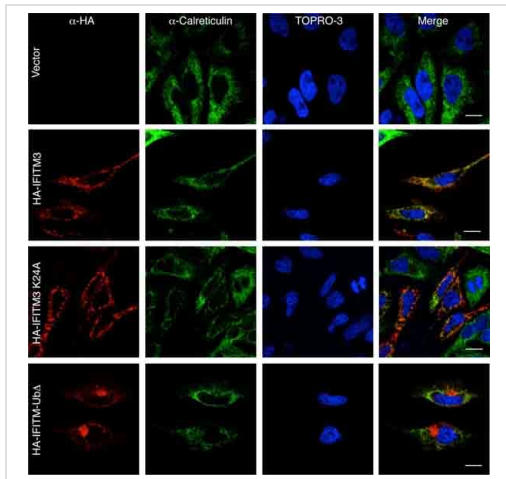
Lane 6 : Rat liver tissue lysate

Lysates/proteins at 30 µg per lane.

Secondary

All lanes : Goat anti-Rabbit IgG (H+L) Superclonal™ Recombinant Secondary Antibody, HRP at 1/4000 dilution

Observed band size: 55 kDa



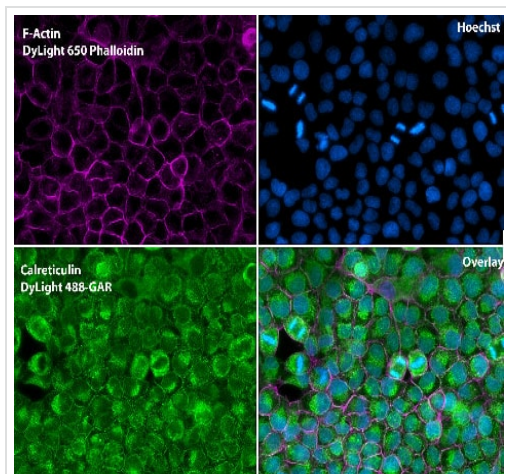
Immunocytochemistry/ Immunofluorescence - Anti-Calreticulin antibody - ER Marker (ab2907)

Image from Yount JS et al, J Biol Chem. 2012 Jun 1;287(23):19631-41. Epub 2012 Apr 17, Fig 3. DOI 10.1074/jbc.M112.362095 June 1, 2012 The Journal of Biological Chemistry, 287, 19631-19641.

ab2907 used at a 1/1000 dilution staining Calreticulin in HeLa cells by Immunocytochemistry/ Immunofluorescence.

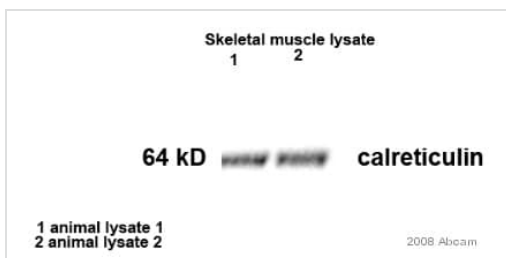
HeLa cells were transfected overnight with empty vector or plasmids encoding the indicated IFITM3 constructs.

Immunofluorescence with α-HA antibodies allowed IFITM3 visualization, and α-calreticulin staining allowed visualization of the ER. TOPRO-3 was used to visualize nuclei. Scale bars indicate 10 μm. Ub[?] indicates mutation of Lys-24, Lys-83, Lys-88, and Lys-104 to alanine.



Immunocytochemistry/ Immunofluorescence - Anti-Calreticulin antibody - ER Marker (ab2907)

Immunocytochemistry/Immunofluorescence analysis of Calreticulin (green) in A431 cells. Formalin fixed cells were permeabilized with 0.1% Triton X-100 in PBS for 10 minutes at room temperature and blocked with 2% BSA in PBS + 0.1% Triton X-100 for 30 minutes at room temperature. Cells were incubated with ab2907 (1:75) for at least 1 hour at room temperature, washed with PBS, and incubated with DyLight 488 goat anti-rabbit IgG secondary antibody (1:250) for 30 minutes at room temperature. Actin was stained with DyLight 650 Phalloidin (1:120) and nuclei (blue) were stained with Hoechst (1 μg/ml) for 30 minutes. Images were taken at 20X magnification.



Western blot - Anti-Calreticulin antibody - ER Marker (ab2907)

This image is courtesy of an anonymous Abreview

All lanes : Anti-Calreticulin antibody - ER Marker (ab2907) at 1/1000 dilution

All lanes : Whole cell lysate prepared from mouse skeletal muscle

Lysates/proteins at 30 μg per lane.

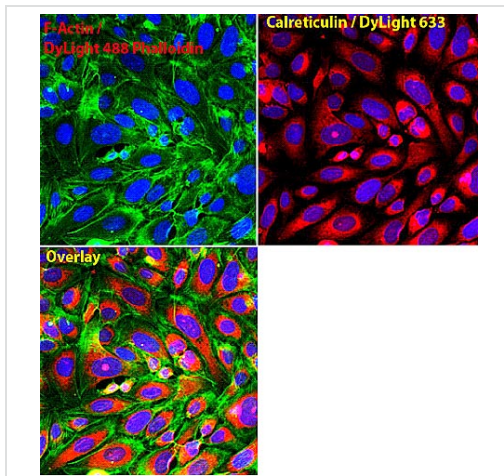
Secondary

All lanes : HRP-conjugated mouse polyclonal to rabbit Ig at 1/10000 dilution

Developed using the ECL technique.

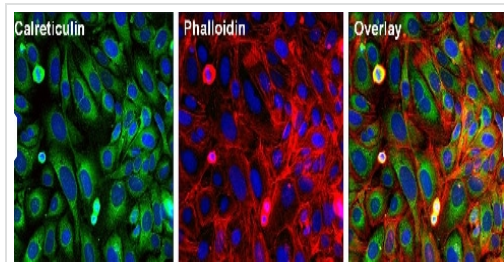
Performed under reducing conditions.

Exposure time: 3 seconds



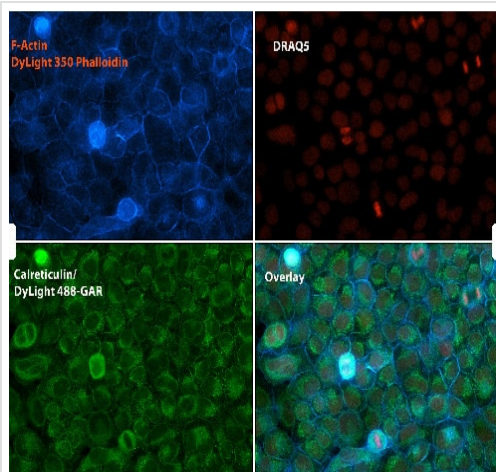
Immunocytochemistry/ Immunofluorescence - Anti-Calreticulin antibody - ER Marker (ab2907)

Immunocytochemistry/Immunofluorescence analysis of Calreticulin (red) in U2OS cells. Formalin fixed cells were permeabilized with 0.1% Triton X-100 in PBS for 10 minutes at room temperature and blocked with 2% BSA in PBS + 0.1% Triton X-100 for 30 minutes at room temperature. Cells were incubated with ab2907 (1:75) for at least 1 hour at room temperature, washed with PBS, and incubated with DyLight 633 goat anti-rabbit IgG secondary antibody (1:250) for 30 minutes at room temperature. Actin was stained with DyLight 488 Phalloidin (1:300) and nuclei (blue) were stained with Hoechst (1 μ g/ml) for 30 minutes. Images were taken at 20X magnification.



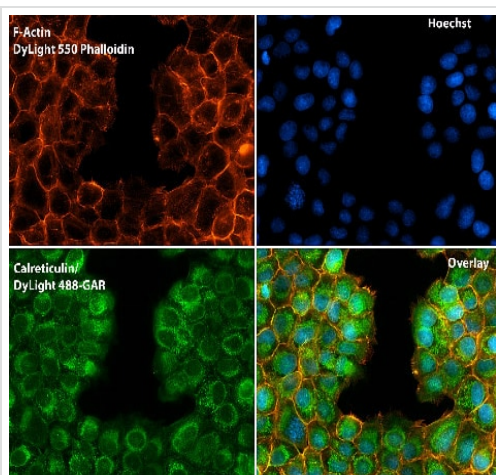
Immunocytochemistry/ Immunofluorescence - Anti-Calreticulin antibody - ER Marker (ab2907)

Immunocytochemistry/Immunofluorescence analysis of Calreticulin (green) U2OS cells. Formalin fixed cells were permeabilized with 0.1% Triton X-100 in PBS for 10 minutes at room temperature and blocked with 2% BSA in PBS 0.1% triton-X for 30 minutes at room temperature. Cells were incubated with ab2907 (1:50) for at least 1 hour at room temperature. Cells were washed with PBS and incubated with DyLight 488 goat-anti-rabbit IgG secondary antibody (1:250) for 30 minutes at room temperature. Actin filaments (red) were stained with DyLight 554-Phalloidin (1:300) in PBS and incubated for 30 minutes. Nuclei (blue) were stained with Hoechst 33342 dye (1 μ g/mL). Images were taken at 20X magnification.



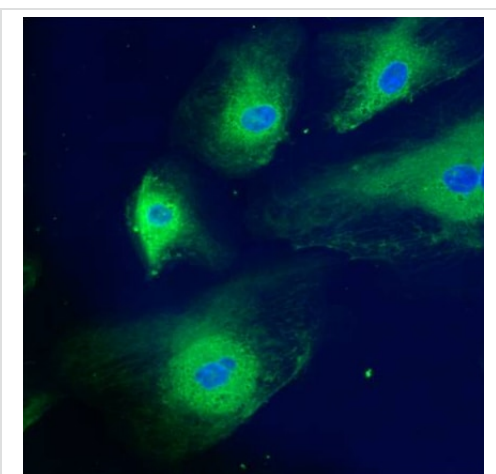
Immunocytochemistry/ Immunofluorescence - Anti-Calreticulin antibody - ER Marker (ab2907)

Immunocytochemistry/Immunofluorescence analysis of Calreticulin (green) in A431 cells. Formalin fixed cells were permeabilized with 0.1% Triton X-100 in PBS for 10 minutes at room temperature and blocked with 2% BSA in PBS + 0.1% Triton X-100 for 30 minutes at room temperature. Cells were incubated with ab2907 (1:75) for at least 1 hour at room temperature, washed with PBS, and incubated with Dylight 488 goat anti-rabbit IgG secondary antibody (1:250) for 30 minutes at room temperature. Actin was stained with Dylight 350 Phalloidin (1:120) and nuclei (red) were stained with DRAQ5 (1ug/ml) for 30 minutes. Images were taken at 20X magnification.



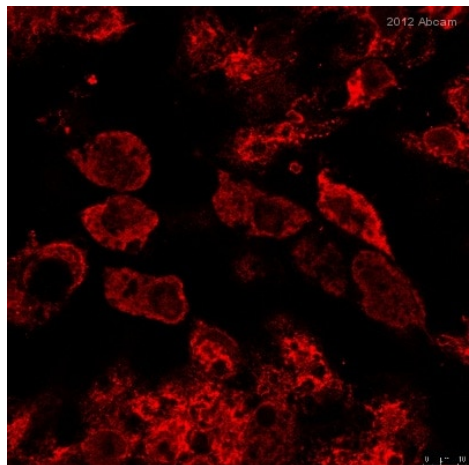
Immunocytochemistry/ Immunofluorescence - Anti-Calreticulin antibody - ER Marker (ab2907)

Immunocytochemistry/Immunofluorescence analysis of Calreticulin (green) in A431 cells. Formalin fixed cells were permeabilized with 0.1% Triton X-100 in PBS for 10 minutes at room temperature and blocked with 2% BSA in PBS + 0.1% Triton X-100 for 30 minutes at room temperature. Cells were incubated with ab2907 (1:75) for at least 1 hour at room temperature, washed with PBS, and incubated with DyLight 488 goat anti-rabbit IgG secondary antibody (1:250) for 30 minutes at room temperature. Actin was stained with DyLight 550 Phalloidin (1:120) and nuclei (blue) were stained with Hoechst (1ug/ml) for 30 minutes. Images were taken at 20X magnification.



Immunocytochemistry/ Immunofluorescence - Anti-Calreticulin antibody - ER Marker (ab2907)

Immunocytochemistry/Immunofluorescence analysis of HMVEC cells labelling Calreticulin using ab2907.



Immunocytochemistry/ Immunofluorescence - Anti-Calreticulin antibody - ER Marker (ab2907)

This image is courtesy of an anonymous Abreview

Immunofluorescence analysis of HepG2 cells, staining Calreticulin with ab2907.

Cells were fixed with paraformaldehyde, permeabilized with 0.1% Saponin and blocked with 10% serum for 1 hour at 20°C. Samples were incubated with primary antibody (1/200 in PBS + 0.1% saponin) for 1 hour at 20°C. An AlexaFluor®647-conjugated donkey anti-rabbit polyclonal IgG (1/400) was used as the secondary antibody.

Please note: All products are "FOR RESEARCH USE ONLY. NOT FOR USE IN DIAGNOSTIC PROCEDURES"

Our Abpromise to you: Quality guaranteed and expert technical support

- Replacement or refund for products not performing as stated on the datasheet
- Valid for 12 months from date of delivery
- Response to your inquiry within 24 hours
- We provide support in Chinese, English, French, German, Japanese and Spanish
- Extensive multi-media technical resources to help you
- We investigate all quality concerns to ensure our products perform to the highest standards

If the product does not perform as described on this datasheet, we will offer a refund or replacement. For full details of the Abpromise, please visit <https://www.abcam.co.jp/abpromise> or contact our technical team.

Terms and conditions

- Guarantee only valid for products bought direct from Abcam or one of our authorized distributors