

### Anti-Calpastatin antibody [SP82] ab101684

リコンビナント **RabMAb**

画像数 6

#### 製品の概要

製品名	Anti-Calpastatin antibody [SP82]
製品の詳細	Rabbit monoclonal [SP82] to Calpastatin
由来種	Rabbit
アプリケーション	<b>適用あり:</b> ICC/IF, IHC-P, Flow Cyt (Intra)
種交差性	<b>交差種:</b> Human
免疫原	Synthetic peptide within Human Calpastatin aa 550-650 (C terminal). The exact sequence is proprietary. Database link: <a href="#">P20810</a>
ポジティブ・コントロール	IHC-P: Human breast carcinoma tissue; Flow Cyt (Intra): HaCaT and HeLa cells; ICC/IF: HaCaT cells.
特記事項	<b>This product is FOR RESEARCH USE ONLY. For commercial use, please contact <a href="mailto:partnerships@abcam.com">partnerships@abcam.com</a>.</b>

#### 製品の特性

製品の状態	Liquid
保存方法	Shipped at 4°C. Store at +4°C. Do Not Freeze.
バッファー	pH: 7.60 Preservative: 0.1% Sodium azide Constituents: PBS, 1% BSA
精製度	Protein A/G purified
特記事項 (精製)	Purified from TCS by protein A/G.
ポリ/モノ	モノクローナル
クローン名	SP82
アイソタイプ	IgG

#### アプリケーション

## The Abpromise guarantee

**Abpromise保証は、**次のテスト済みアプリケーションにおけるab101684の使用に適用されます

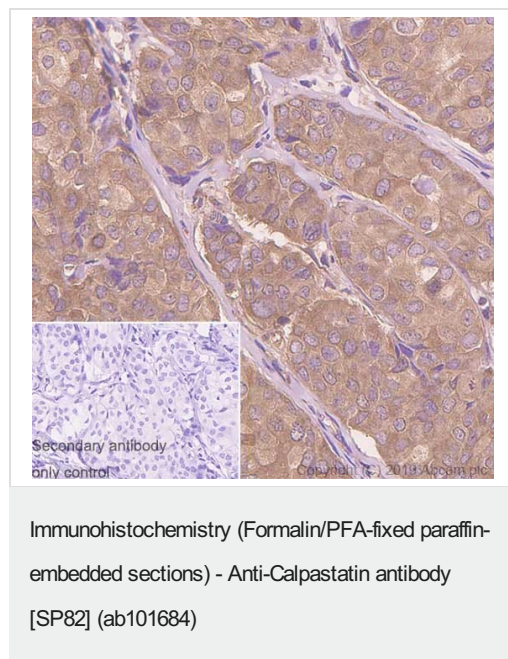
アプリケーションノートには、推奨の開始希釈率がありますが、適切な希釈率につきましてはご検討ください。

アプリケーション	Abreviews	特記事項
ICC/IF		Use at an assay dependent concentration.
IHC-P		1/100. Incubate for 30 minutes at RT. Antigen retrieval is recommended: boil tissue section in 10mM citrate buffer, pH 6.0 for 10 min followed by cooling at RT for 20 min.
Flow Cyt (Intra)		Use at an assay dependent concentration. <b>ab172730</b> - Rabbit monoclonal IgG, is suitable for use as an isotype control with this antibody.

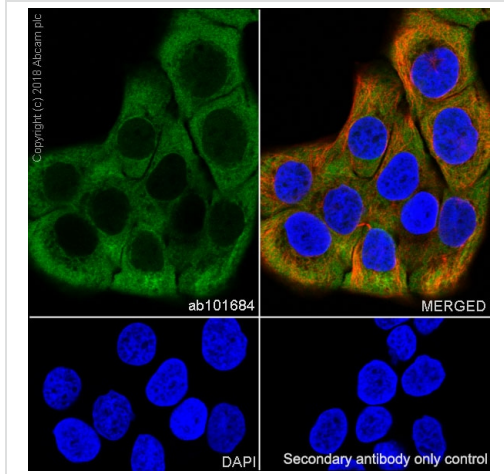
## ターゲット情報

機能	Specific inhibition of calpain (calcium-dependent cysteine protease). Plays a key role in postmortem tenderization of meat and have been proposed to be involved in muscle protein degradation in living tissue.
配列類似性	Belongs to the protease inhibitor I27 (calpastatin) family.
ドメイン	Has four inhibitory domains.
翻訳後修飾	The N-terminus is blocked.

## 画像

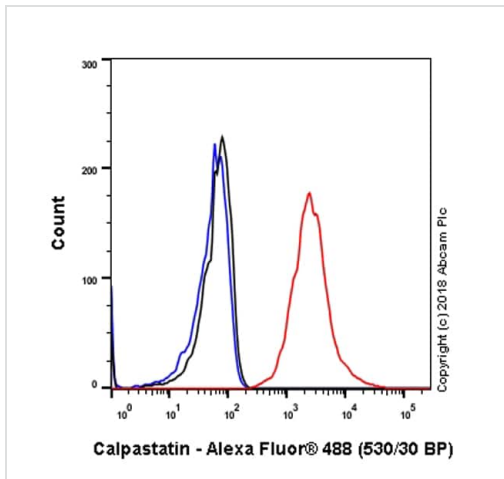


Immunohistochemistry (Formalin/PFA-fixed paraffin-embedded sections) analysis of Human breast carcinoma tissue sections labeling Calpastatin with Purified ab101684 at 1/100 dilution (0.59 µg/ml). Heat mediated antigen retrieval was performed Heat mediated antigen retrieval with Citrate buffer (pH 6.0, epitope retrieval solution 1) for 20mins. Rabbit specific IHC polymer detection kit HRP/DAB (**ab209101**) was used as the secondary antibody. Negative control: PBS instead of the primary antibody. Hematoxylin was used as a counterstain.



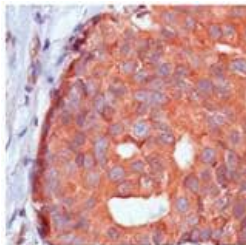
Immunocytochemistry/ Immunofluorescence - Anti-Calpastatin antibody [SP82] (ab101684)

Immunocytochemistry/ Immunofluorescence analysis of HaCaT (human skin keratinocyte) cells labeling Calpastatin with purified ab101684. Cells were fixed in 4% paraformaldehyde and permeabilized with 0.1% Triton X-100. Cells were counterstained with **ab195889** Anti-alpha Tubulin antibody [DM1A] - Microtubule Marker (Alexa Fluor® 594). Goat anti rabbit IgG (Alexa Fluor® 488, **ab150077**) was used as the secondary antibody. DAPI was used as nuclear counterstain. PBS instead of the primary antibody was used as the secondary antibody only control.



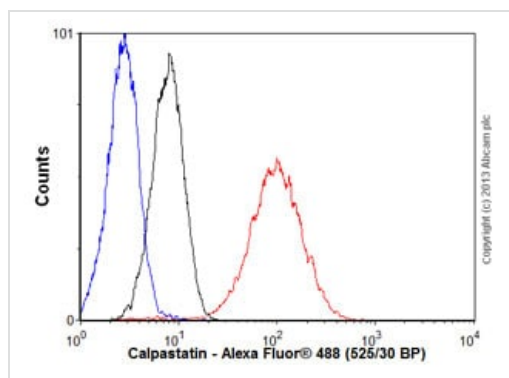
Flow Cytometry (Intracellular) - Anti-Calpastatin antibody [SP82] (ab101684)

Flow cytometry analysis of HaCaT (human skin keratinocyte) labeling Calpastatin with purified ab101684 (red). Cells were fixed with 4% paraformaldehyde and permeabilised with 90% methanol. Goat anti rabbit IgG (Alexa Fluor® 488, **ab150077**) was used as a secondary antibody. Isotype control - Rabbit monoclonal IgG (**ab172730**) (black). Unlabeled control - Unlabelled cells (blue).



Immunohistochemistry (Formalin/PFA-fixed paraffin-embedded sections) - Anti-Calpastatin antibody [SP82] (ab101684)

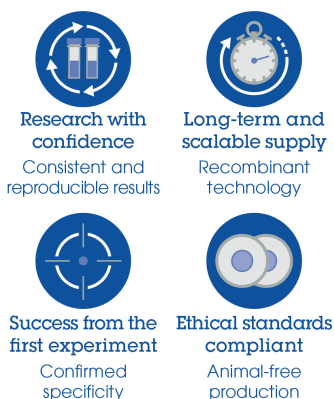
Immunohistochemical analysis of Calpastatin in formalin-fixed, paraffin-embedded Human breast carcinoma using ab101684 at 1/200 dilution.



Flow Cytometry (Intracellular) - Anti-Calpastatin antibody [SP82] (ab101684)

Overlay histogram showing HeLa cells stained with ab101684 (red line). The cells were fixed with 80% methanol (5 min) and then permeabilized with 0.1% PBS-Tween for 20 min. The cells were then incubated in 1x PBS / 10% normal goat serum / 0.3M glycine to block non-specific protein-protein interactions followed by the antibody (ab101684) for 30 min at 22°C. The secondary antibody used was Alexa Fluor® 488 goat anti-rabbit IgG (H&L) (**ab150077**) for 30 min at 22°C. Isotype control antibody (black line) was rabbit IgG (monoclonal) (1µg/1x10<sup>6</sup> cells) used under the same conditions. Unlabelled sample (blue line) was also used as a control. Acquisition of >5,000 events were collected using a 20mW Argon ion laser (488nm) and 525/30 bandpass filter.

#### Why choose a recombinant antibody?



Anti-Calpastatin antibody [SP82] (ab101684)

**Please note:** All products are "FOR RESEARCH USE ONLY. NOT FOR USE IN DIAGNOSTIC PROCEDURES"

#### Our Abpromise to you: Quality guaranteed and expert technical support

- Replacement or refund for products not performing as stated on the datasheet
- Valid for 12 months from date of delivery
- Response to your inquiry within 24 hours
- We provide support in Chinese, English, French, German, Japanese and Spanish
- Extensive multi-media technical resources to help you
- We investigate all quality concerns to ensure our products perform to the highest standards

If the product does not perform as described on this datasheet, we will offer a refund or replacement. For full details of the Abpromise, please visit <https://www.abcam.co.jp/abpromise> or contact our technical team.

#### Terms and conditions

- Guarantee only valid for products bought direct from Abcam or one of our authorized distributors