

### Anti-Calpain 1 antibody ab28257

★★★★★ [1 Abreviews](#) [11 References](#) [画像数 2](#)

#### 製品の概要

製品名	Anti-Calpain 1 antibody
製品の詳細	Rabbit polyclonal to Calpain 1
由来種	Rabbit
特異性	ab28257 recognizes the amino terminal end of the large subunit of Calpain 1. The antibody does not recognize amino-processed Calpain 1, and can be used to discriminate between latent and amino-processed forms. Also, it does not cross react with the other calpain family members (M Calpain, Calpain 94, ncl2, ncl3, etc.).
アプリケーション	<b>適用あり:</b> WB, ICC/IF
種交差性	<b>交差種:</b> Human
免疫原	Synthetic peptide corresponding to Human Calpain 1 aa 1-30.
ポジティブ・コントロール	Human condrosarcoma cell lysate.
特記事項	<p>The Life Science industry has been in the grips of a reproducibility crisis for a number of years. Abcam is leading the way in addressing this with our range of recombinant monoclonal antibodies and knockout edited cell lines for gold-standard validation. Please check that this product meets your needs before purchasing.</p> <p>If you have any questions, special requirements or concerns, please send us an inquiry and/or contact our Support team ahead of purchase. Recommended alternatives for this product can be found below, along with publications, customer reviews and Q&amp;As</p>

#### 製品の特性

製品の状態	Liquid
保存方法	Shipped at 4°C. Store at +4°C short term (1-2 weeks). Upon delivery aliquot. Store at -20°C long term.
バッファー	Preservative: 0.05% Sodium azide Constituents: PBS, 50% Glycerol
精製度	Immunogen affinity purified
特記事項(精製)	The antibody has been peptide-affinity purified.
ポリ/モノ	ポリクローナル
アイソタイプ	IgG

## アプリケーション

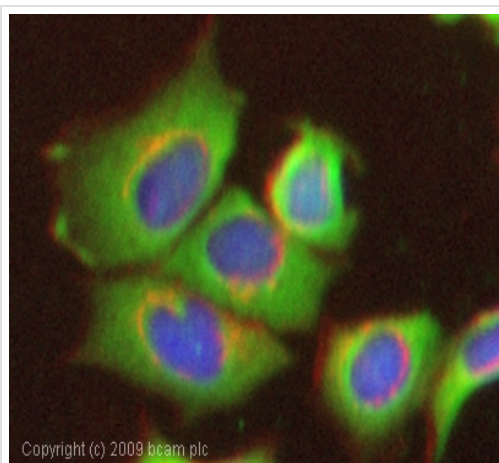
**The Abpromise guarantee** Abpromise保証は、次のテスト済みアプリケーションにおけるab28257の使用に適用されます  
アプリケーションノートには、推奨の開始希釈率がありますが、適切な希釈率につきましてはご検討ください。

アプリケーション	Abreviews	特記事項
WB	★★★★★ (1)	1/1000 - 1/5000. Detects a band of approximately 82 kDa (predicted molecular weight: 82 kDa). 1/1000, when using colorimetric substrates such as BCIP/NBT - 1/5000, when using chemiluminescent substrates. But note that when used against the reduced protein, ab28257 identifies bands at 80 kDa, 68 kDa, and a series of further cleaved forms. Dilution optimised using Chromogenic detection.
ICC/IF		Use a concentration of 1 - 5 µg/ml.

## ターゲット情報

機能	Calcium-regulated non-lysosomal thiol-protease which catalyze limited proteolysis of substrates involved in cytoskeletal remodeling and signal transduction.
組織特異性	Ubiquitous.
配列類似性	Belongs to the peptidase C2 family. Contains 1 calpain catalytic domain. Contains 4 EF-hand domains.
細胞内局在	Cytoplasm. Cell membrane. Translocates to the plasma membrane upon Ca(2+) binding.

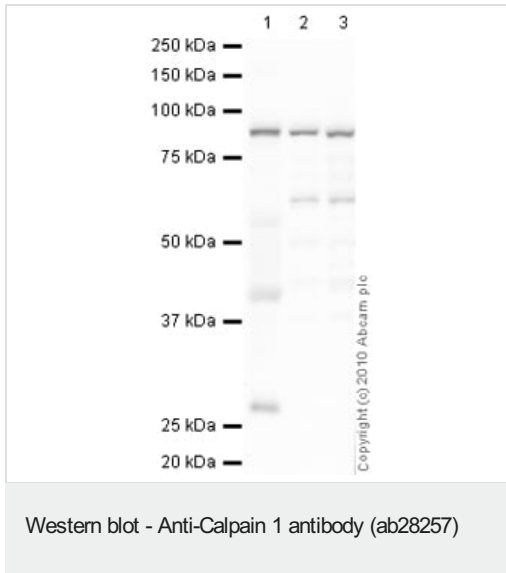
## 画像



Copyright (c) 2009 bcam plc

Immunocytochemistry/ Immunofluorescence - Anti-Calpain 1 antibody (ab28257)

ICC/IF image of ab28257 stained MCF7 cells. The cells were 100% methanol fixed (5 min) and then incubated in 1%BSA / 10% normal goat serum / 0.3M glycine in 0.1% PBS-Tween for 1h to permeabilise the cells and block non-specific protein-protein interactions. The cells were then incubated with the antibody (ab28257, 1µg/ml) overnight at +4°C. The secondary antibody (green) was Alexa Fluor® 488 goat anti-rabbit IgG (H+L) used at a 1/1000 dilution for 1h. Alexa Fluor® 594 WGA was used to label plasma membranes (red) at a 1/200 dilution for 1h. DAPI was used to stain the cell nuclei (blue) at a concentration of 1.43µM.



**All lanes** : Anti-Calpain 1 antibody (ab28257) at 1 µg/ml

**Lane 1** : Human liver tissue lysate - total protein (**ab29889**)

**Lane 2** : HeLa (Human epithelial carcinoma cell line) Whole Cell Lysate

**Lane 3** : U2OS (Human osteosarcoma cell line) Whole Cell Lysate

Lysates/proteins at 10 µg per lane.

**Secondary**

**All lanes** : Goat Anti-Rabbit IgG H&L (HRP) preadsorbed (**ab97080**) at 1/5000 dilution

Developed using the ECL technique.

Performed under reducing conditions.

**Predicted band size:** 82 kDa

**Observed band size:** 82 kDa

**Additional bands at:** 27 kDa, 42 kDa, 65 kDa. We are unsure as to the identity of these extra bands.

**Exposure time:** 30 seconds

**Please note:** All products are "FOR RESEARCH USE ONLY. NOT FOR USE IN DIAGNOSTIC PROCEDURES"

**Our Abpromise to you: Quality guaranteed and expert technical support**

- Replacement or refund for products not performing as stated on the datasheet
- Valid for 12 months from date of delivery
- Response to your inquiry within 24 hours
- We provide support in Chinese, English, French, German, Japanese and Spanish
- Extensive multi-media technical resources to help you
- We investigate all quality concerns to ensure our products perform to the highest standards

If the product does not perform as described on this datasheet, we will offer a refund or replacement. For full details of the Abpromise, please visit <https://www.abcam.co.jp/abpromise> or contact our technical team.

**Terms and conditions**

- Guarantee only valid for products bought direct from Abcam or one of our authorized distributors