

Anti-Calnexin - ER membrane marker antibody - ER Marker ab13504

★★★★★ [8 Abreviews](#) [35 References](#) [画像数 5](#)

製品の概要

製品名	Anti-Calnexin - ER membrane marker antibody - ER Marker
製品の詳細	Rabbit polyclonal to Calnexin - ER membrane marker - ER Marker
由来種	Rabbit
特異性	Weak reactivity with Chicken, Fruitfly (<i>Drosophila melanogaster</i>) and <i>Xenopus laevis</i> .
アプリケーション	適用あり: IHC-P, ICC/IF, WB
種交差性	交差種: Mouse, Rat, Human
免疫原	Synthetic peptide corresponding to Dog Calnexin aa 550 to the C-terminus (C terminal) conjugated to keyhole limpet haemocyanin. Database link: P24643

 [Run BLAST with](#)

 [Run BLAST with](#)

特記事項

The Life Science industry has been in the grips of a reproducibility crisis for a number of years. Abcam is leading the way in addressing this with our range of recombinant monoclonal antibodies and knockout edited cell lines for gold-standard validation. Please check that this product meets your needs before purchasing.

If you have any questions, special requirements or concerns, please send us an inquiry and/or contact our Support team ahead of purchase. Recommended alternatives for this product can be found below, along with publications, customer reviews and Q&As

製品の特性

製品の状態	Liquid
保存方法	Store at +4°C short term (1-2 weeks). Aliquot and store at -20°C or -80°C. Avoid repeated freeze / thaw cycles.
バッファー	Preservative: 0.09% Sodium azide Constituents: PBS, 50% Glycerol (glycerin, glycerine)
精製度	Protein A purified
ポリ/モノ	ポリクローナル
アイソタイプ	IgG

アプリケーション

The Abpromise guarantee **Abpromise保証は、** 次のテスト済みアプリケーションにおけるab13504の使用に適用されます
アプリケーションノートには、推奨の開始希釈率がありますが、適切な希釈率につきましてはご検討ください。

アプリケーション	Abreviews	特記事項
IHC-P		
ICC/IF	★★★★★ (5)	
WB	★★★★★ (3)	

追加情報

Flow Cyt: 1/100.
ICC: 1/200.
ICC/IF: Use at an assay dependent dilution.
IHC-P: Use at an assay dependent dilution.
IHC-Fr: Use at an assay dependent dilution.
IHC-FoFr: Use at an assay dependent dilution (PMID 18621691).
IP: 1/100.
WB: 1/2000. Detects a band of approximately 90 kDa (predicted molecular weight: 90 kDa).

Not yet tested in other applications.
Optimal dilutions/concentrations should be determined by the end user.

ターゲット情報

機能

Calcium-binding protein that interacts with newly synthesized glycoproteins in the endoplasmic reticulum. It may act in assisting protein assembly and/or in the retention within the ER of unassembled protein subunits. It seems to play a major role in the quality control apparatus of the ER by the retention of incorrectly folded proteins.

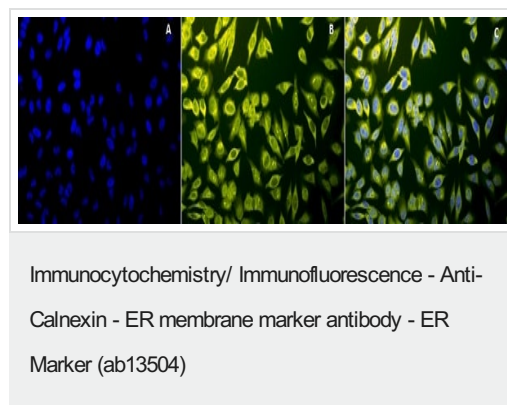
配列類似性

Belongs to the calreticulin family.

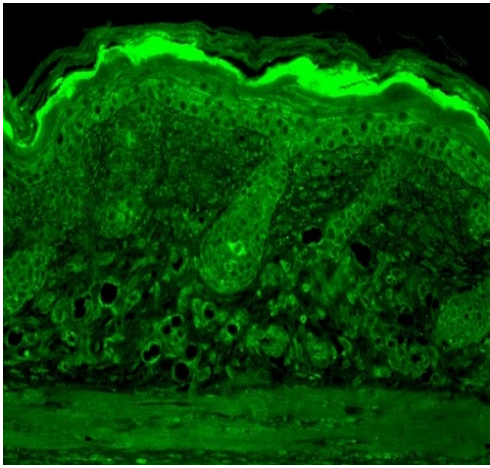
細胞内局在

Endoplasmic reticulum membrane. Melanosome. Identified by mass spectrometry in melanosome fractions from stage I to stage IV.

画像

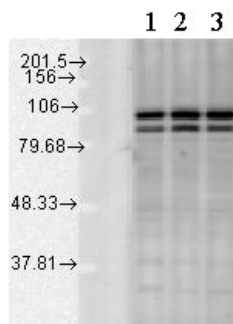


Immunocytochemistry/Immunofluorescence analysis using ab13504 at 1/80 for 12 hours at 4°C in Heat Shocked HeLa Cells. Fixed 2% Formaldehyde for 20 min at RT. Secondary Antibody: R-PE Goat Anti-Rabbit (yellow) at 1/200 for 2 hours at RT. Counterstain: DAPI (blue) nuclear stain at 1/40000 for 2 hours at RT. (A) DAPI (blue) nuclear stain. (B) Anti-Calnexin-CT Antibody. (C) Composite. Heat Shocked at 42°C for 1h.



Immunohistochemistry (Formalin/PFA-fixed paraffin-embedded sections) - Anti-Calnexin - ER membrane marker antibody - ER Marker (ab13504)

Immunohistochemistry analysis using ab13504 at 1/100 for 1 hour at RT in mouse backskin. Fixed by Bouin's Fixative Solution. Secondary Antibody: FITC Goat Anti-Rabbit (green) at 1/50 for 1 hour at RT.

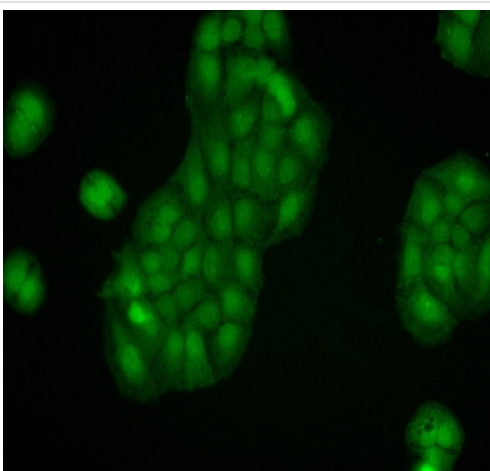


Western blot - Anti-Calnexin - ER membrane marker antibody - ER Marker (ab13504)

All lanes : Anti-Calnexin - ER membrane marker antibody - ER Marker (ab13504) at 1/2000 dilution

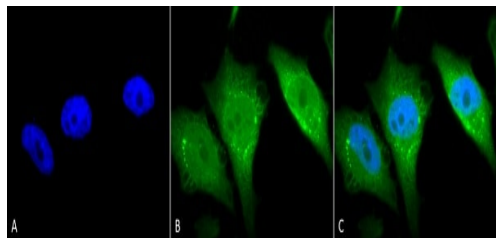
All lanes : Mixture of rat tissue lysates

Predicted band size: 90 kDa



Immunocytochemistry/ Immunofluorescence - Anti-Calnexin - ER membrane marker antibody - ER Marker (ab13504)

Immunocytochemistry/Immunofluorescence analysis using ab13504 at 1/100 for 12 hours at 4°C in HaCaT cells. Fixed by Cold 100% methanol at -20C for 10 minutes. Secondary Antibody: FITC Goat Anti-Rabbit at 1/50 for 1-2 hours at RT in dark. /



Immunocytochemistry/ Immunofluorescence - Anti-Calnexin - ER membrane marker antibody - ER Marker (ab13504)

Immunocytochemistry/Immunofluorescence analysis using ab13504 at 1/80 for 12 hours at 4°C in Heat Shocked HeLa Cells. Fixed by 2% Formaldehyde for 20 min at RT. Secondary Antibody: FITC Goat Anti-Rabbit (green) at 1/200 for 2 hours at RT. Counterstain: DAPI (blue) nuclear stain at 1:40000 for 2 hours at RT. Heat Shocked at 42°C for 1h.

Please note: All products are "FOR RESEARCH USE ONLY. NOT FOR USE IN DIAGNOSTIC PROCEDURES"

Our Abpromise to you: Quality guaranteed and expert technical support

- Replacement or refund for products not performing as stated on the datasheet
- Valid for 12 months from date of delivery
- Response to your inquiry within 24 hours
- We provide support in Chinese, English, French, German, Japanese and Spanish
- Extensive multi-media technical resources to help you
- We investigate all quality concerns to ensure our products perform to the highest standards

If the product does not perform as described on this datasheet, we will offer a refund or replacement. For full details of the Abpromise, please visit <https://www.abcam.co.jp/abpromise> or contact our technical team.

Terms and conditions

- Guarantee only valid for products bought direct from Abcam or one of our authorized distributors