

Anti-Calnexin antibody ab13505

4 References [画像数 5](#)

製品の概要

製品名	Anti-Calnexin antibody
製品の詳細	Rabbit polyclonal to Calnexin
由来種	Rabbit
特異性	Recognizes ER membrane, mitochondria and cis-Golgi
アプリケーション	適用あり: IHC-P, ICC/IF, WB
種交差性	交差種: Mouse, Rat, Human
免疫原	Synthetic peptide: TAPPSSPKVITYKAPVPTGE conjugated to KLH, corresponding to amino acids 50-68 of Human Calnexin Run BLAST with Run BLAST with
特記事項	<p>The Life Science industry has been in the grips of a reproducibility crisis for a number of years. Abcam is leading the way in addressing this with our range of recombinant monoclonal antibodies and knockout edited cell lines for gold-standard validation. Please check that this product meets your needs before purchasing.</p> <p>If you have any questions, special requirements or concerns, please send us an inquiry and/or contact our Support team ahead of purchase. Recommended alternatives for this product can be found below, along with publications, customer reviews and Q&As</p>

製品の特性

製品の状態	Liquid
保存方法	Shipped at 4°C. Store at +4°C short term (1-2 weeks). Upon delivery aliquot. Store at -20°C or -80°C. Avoid freeze / thaw cycle.
バッファー	Constituent: Whole serum
精製度	Whole antiserum
ポリ/モノ	ポリクローナル
アイソタイプ	IgG

アプリケーション

The Abpromise guarantee

Abpromise保証は、次のテスト済みアプリケーションにおけるab13505の使用に適用されます

アプリケーションノートには、推奨の開始希釈率がありますが、適切な希釈率につきましてはご確認ください。

アプリケーション	Abreviews	特記事項
IHC-P		1/100.
ICC/IF		1/100.
WB		1/5000. Detects a band of approximately 90 kDa (predicted molecular weight: 90 kDa).

ターゲット情報

機能

Calcium-binding protein that interacts with newly synthesized glycoproteins in the endoplasmic reticulum. It may act in assisting protein assembly and/or in the retention within the ER of unassembled protein subunits. It seems to play a major role in the quality control apparatus of the ER by the retention of incorrectly folded proteins.

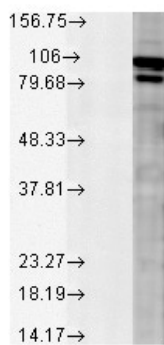
配列類似性

Belongs to the calreticulin family.

細胞内局在

Endoplasmic reticulum membrane. Melanosome. Identified by mass spectrometry in melanosome fractions from stage I to stage IV.

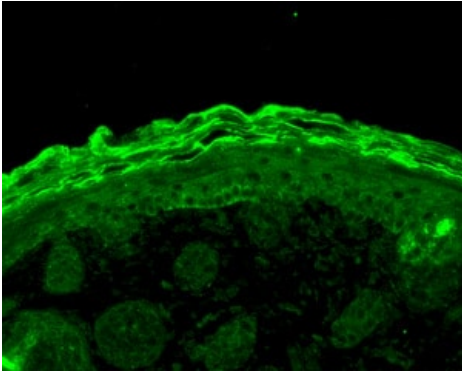
画像



Anti-Calnexin antibody (ab13505) at 1/1000 dilution + Mixture of tissue lysates prepared from Rat tissues.

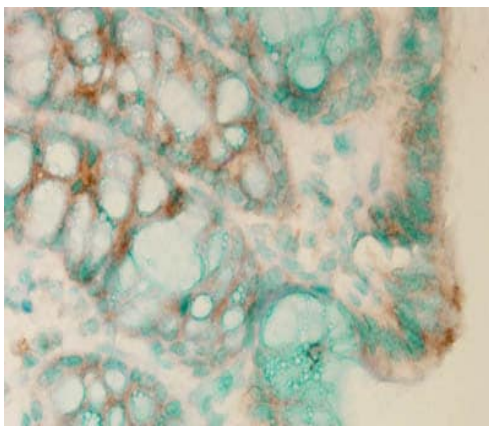
Predicted band size: 90 kDa

Western blot - Anti-Calnexin antibody (ab13505)



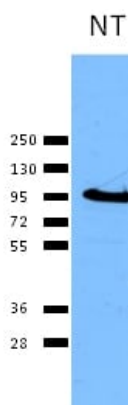
Immunohistochemistry (Formalin/PFA-fixed paraffin-embedded sections) - Anti-Calnexin antibody (ab13505)

ab13505 staining Calnexin - ER membrane marker in mouse back skin tissue section by Immunohistochemistry (Bouin's fixed paraffin embedded tissue sections). Tissue underwent heat mediated antigen retrieval in microwave with two, 5 minutes incubation intervals in citrate buffer. The primary antibody was used at 1/100 dilution and a Fluorophore conjugated goat anti rabbit secondary at 1/50 dilution.



Immunohistochemistry (Formalin/PFA-fixed paraffin-embedded sections) - Anti-Calnexin antibody (ab13505)

ab13505 staining Calnexin - ER membrane marker in mouse colitis colon tissue section by immunohistochemistry (Bouin's fixed paraffin embedded tissue sections). Tissue underwent heat mediated antigen retrieval in microwave with two, 5 minutes incubation intervals in citrate buffer. An antibody amplifier™ was used for staining. A HRP-conjugated anti rabbit was used at 1/10 dilution as secondary.



Western blot - Anti-Calnexin antibody (ab13505)

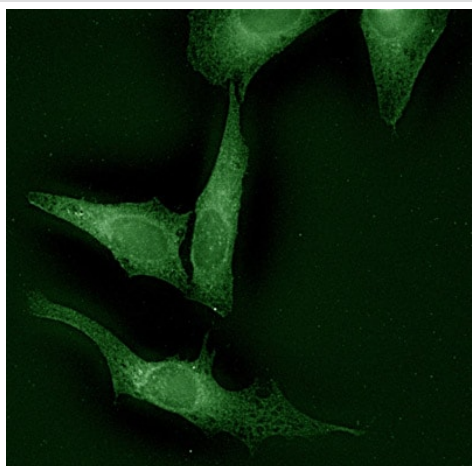
Anti-Calnexin antibody (ab13505) at 1/2000 dilution ((in TBS with 0.05% TW-20)) + HeLa cell lysate

Secondary

An HRP-conjugated goat anti-rabbit IgG

Developed using the ECL technique.

Predicted band size: 90 kDa



Immunocytochemistry/ Immunofluorescence - Anti-Calnexin antibody (ab13505)

ab13505 staining Calnexin in HeLa cells by ICC/IF (Immunocytochemistry/immunofluorescence). Cells were fixed with 4% PFA for 20 minutes at room temperature. Samples were incubated with primary antibody (1/100) for 1 hour at room temperature. A Fluorescein-conjugated goat anti-rabbit IgG secondary antibody was used.

Please note: All products are "FOR RESEARCH USE ONLY. NOT FOR USE IN DIAGNOSTIC PROCEDURES"

Our Abpromise to you: Quality guaranteed and expert technical support

- Replacement or refund for products not performing as stated on the datasheet
- Valid for 12 months from date of delivery
- Response to your inquiry within 24 hours
- We provide support in Chinese, English, French, German, Japanese and Spanish
- Extensive multi-media technical resources to help you
- We investigate all quality concerns to ensure our products perform to the highest standards

If the product does not perform as described on this datasheet, we will offer a refund or replacement. For full details of the Abpromise, please visit <https://www.abcam.co.jp/abpromise> or contact our technical team.

Terms and conditions

- Guarantee only valid for products bought direct from Abcam or one of our authorized distributors