

Anti-Calmodulin 1/2/3 antibody [EP799Y] - BSA and Azide free ab214793

リコンビナント **RabMAb**

画像数 6

製品の概要

製品名	Anti-Calmodulin 1/2/3 antibody [EP799Y] - BSA and Azide free
製品の詳細	Rabbit monoclonal [EP799Y] to Calmodulin 1/2/3 - BSA and Azide free
由来種	Rabbit
アプリケーション	適用あり: Flow Cyt (Intra), IP, IHC-P, WB, IHC-Fr
種交差性	交差種: Mouse, Rat, Human
免疫原	Synthetic peptide. This information is proprietary to Abcam and/or its suppliers.
ポジティブ・コントロール	WB: C6, RAW264.7, NIH/3T3, HeLa, HCT 116 cell lysate. IHC-P: Human urinary bladder carcinoma and testis tissues. Flow Cyt (intra): MCF7 and NIH/3T3 cells. IP: Human skeletal muscle tissue lysate.
特記事項	<p>ab214793 is the carrier-free version of ab45689.</p> <p>Our carrier-free antibodies are typically supplied in a PBS-only formulation, purified and free of BSA, sodium azide and glycerol. The carrier-free buffer and high concentration allow for increased conjugation efficiency.</p> <p>This conjugation-ready format is designed for use with fluorochromes, metal isotopes, oligonucleotides, and enzymes, which makes them ideal for antibody labelling, functional and cell-based assays, flow-based assays (e.g. mass cytometry) and Multiplex Imaging applications.</p> <p>Use our conjugation kits for antibody conjugates that are ready-to-use in as little as 20 minutes with <1 minute hands-on-time and 100% antibody recovery: available for fluorescent dyes, HRP, biotin and gold.</p> <p>This product is compatible with the Maxpar[®] Antibody Labeling Kit from Fluidigm, without the need for antibody preparation. Maxpar[®] is a trademark of Fluidigm Canada Inc.</p> <p>This product is a recombinant monoclonal antibody, which offers several advantages including:</p> <ul style="list-style-type: none"> - High batch-to-batch consistency and reproducibility - Improved sensitivity and specificity - Long-term security of supply - Animal-free production <p>For more information see here.</p> <p>Our RabMAb[®] technology is a patented hybridoma-based technology for making rabbit monoclonal antibodies. For details on our patents, please refer to RabMAb[®] patents.</p>

製品の特性

製品の状態	Liquid
保存方法	Shipped at 4°C. Store at +4°C. Do Not Freeze.
バッファー	pH: 7.20 Constituent: PBS
キャリア・フリー	はい
精製度	Protein A purified
ポリ/モノ	モノクローナル
クローン名	EP799Y
アイソタイプ	IgG

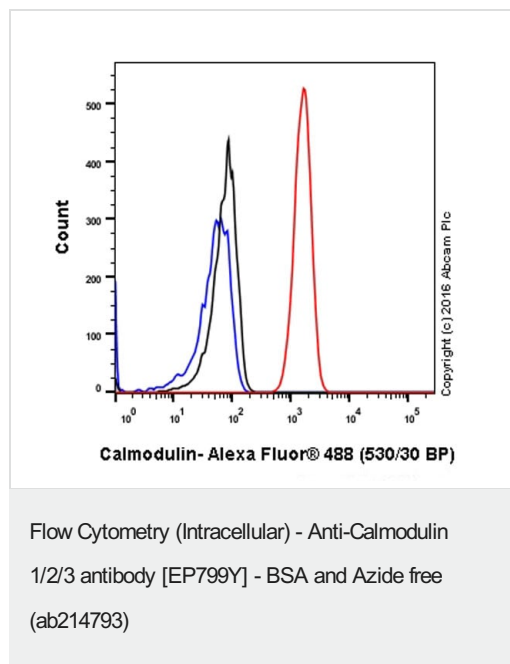
アプリケーション

The Abpromise guarantee **Abpromise保証は、**次のテスト済みアプリケーションにおけるab214793の使用に適用されます
アプリケーションノートには、推奨の開始希釈率がありますが、適切な希釈率につきましてはご確認ください。

アプリケーション	Abreviews	特記事項
Flow Cyt (Intra)		Use at an assay dependent concentration. ab199376 - Rabbit monoclonal IgG, is suitable for use as an isotype control with this antibody.
IP		Use at an assay dependent concentration.
IHC-P		Use at an assay dependent concentration. Perform heat mediated antigen retrieval with Tris/EDTA buffer pH 9.0 before commencing with IHC staining protocol.
WB		Use at an assay dependent concentration. Detects a band of approximately 16 kDa (predicted molecular weight: 17 kDa).
IHC-Fr		Use at an assay dependent concentration.

ターゲット情報

関連性	Function: Calmodulin mediates the control of a large number of enzymes and other proteins by Ca(2+). Among the enzymes to be stimulated by the calmodulin-Ca(2+) complex are a number of protein kinases and phosphatases. Together with CEP110 and centrin, is involved in a genetic pathway that regulates the centrosome cycle and progression through cytokinesis.
細胞内局在	Cytoplasm > cytoskeleton > spindle. Cytoplasm > cytoskeleton > spindle pole. Distributed throughout the cell during interphase, but during mitosis becomes dramatically localized to the spindle poles and the spindle microtubules.
製品の状態	There are three genes which encode an identical calcium binding protein which is one of the four subunits of phosphorylase kinase.



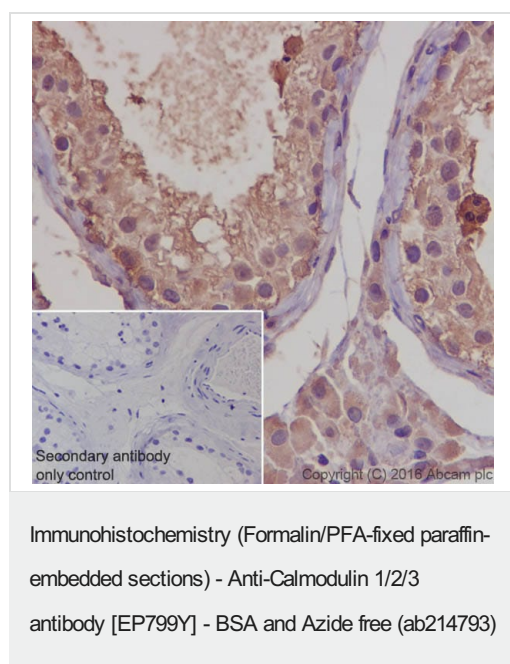
ab45689 staining Calmodulin in NIH/3T3 (Mouse embryo fibroblast cell line) cells by intracellular flow cytometry.

Cells were fixed with 4% paraformaldehyde and the sample was incubated with the primary antibody at a dilution of 1/100. A goat anti rabbit IgG (Alexa Fluor® 488) at a dilution of 1/2000 was used as the secondary antibody.

Isotype control: Rabbit monoclonal IgG (Black)

Unlabeled control: Cell without incubation with primary antibody and secondary antibody (Blue)

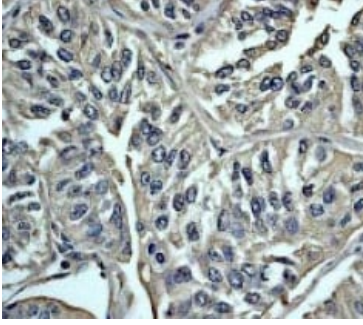
This data was developed using the same antibody clone in a different buffer formulation containing PBS, BSA, glycerol, and sodium azide (**ab45689**).



ab45689 staining Calmodulin in human testis tissue sections by Immunohistochemistry (IHC-P - paraformaldehyde-fixed, paraffin-embedded sections). Tissue was fixed with paraformaldehyde and antigen retrieval was by heat mediation in a EDTA buffer. Samples were incubated with primary antibody at a dilution of 1/2000. A goat anti-rabbit IgG H&L (HRP) **ab97051** was used as the secondary antibody at a dilution of 1/500.

Negative control: PBS in place of primary antibody (inset).

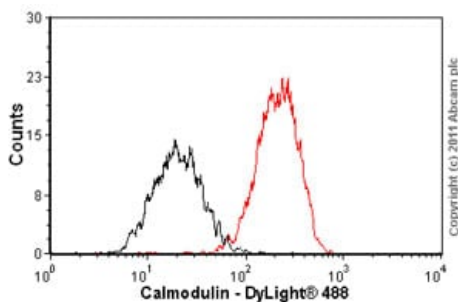
This data was developed using the same antibody clone in a different buffer formulation containing PBS, BSA, glycerol, and sodium azide (**ab45689**).



Immunohistochemistry (Formalin/PFA-fixed paraffin-embedded sections) - Anti-Calmodulin 1/2/3 antibody [EP799Y] - BSA and Azide free (ab214793)

ab45689 at a 1:250 dilution staining Calmodulin in human urinary bladder carcinoma tissue by immunohistochemistry in paraffin embedded tissue.

This data was developed using the same antibody clone in a different buffer formulation containing PBS, BSA, glycerol, and sodium azide (**ab45689**).



Flow Cytometry (Intracellular) - Anti-Calmodulin 1/2/3 antibody [EP799Y] - BSA and Azide free (ab214793)

Overlay histogram showing MCF7 (Human breast adenocarcinoma cell line) cells stained with **ab45689** (red line).

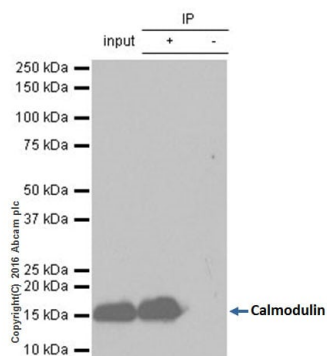
The cells were fixed with methanol (5 min) and then permeabilized with 0.1% PBS-Tween for 20 min. The cells were then incubated in 1x PBS / 10% normal goat serum / 0.3M glycine to block non-specific protein-protein interactions followed by the antibody (**ab45689**, 1/50 dilution) for 30 min at 22°C. The secondary antibody used was DyLight® 488 goat anti-rabbit IgG (H+L) (**ab96899**) at 1/500 dilution for 30 min at 22°C.

Isotype control antibody (black line) was rabbit monoclonal IgG (0.5µg/1x10⁶ cells) used under the same conditions.

Acquisition of >5,000 events was performed.

This antibody gave a decreased signal in MCF7 cells fixed with 4% paraformaldehyde (10 min)/permeabilized in 0.1% PBS-Tween used under the same conditions.

This data was developed using the same antibody clone in a different buffer formulation containing PBS, BSA, glycerol, and sodium azide (**ab45689**).



Immunoprecipitation - Anti-Calmodulin 1/2/3 antibody [EP799Y] - BSA and Azide free (ab214793)

ab45689 immunoprecipitating Calmodulin. 10 µg of cell lysate was incubated with primary antibody at a dilution of 1/20. VeriBlot for IP Detection Reagent (HRP) (**ab131366**), was used for detection at 1/10,000 dilution

Lane 1: Human skeletal muscle lysate (10 µg)

Lane 2: Human skeletal muscle lysate

Lane 3: Rabbit monoclonal IgG (**ab172730**) instead of **ab45689** in human skeletal muscle lysate

This data was developed using the same antibody clone in a different buffer formulation containing PBS, BSA, glycerol, and sodium azide (**ab45689**).

Why choose a recombinant antibody?



Research with confidence
Consistent and reproducible results



Long-term and scalable supply
Recombinant technology



Success from the first experiment
Confirmed specificity



Ethical standards compliant
Animal-free production

Anti-Calmodulin 1/2/3 antibody [EP799Y] - BSA and Azide free (ab214793)

Please note: All products are "FOR RESEARCH USE ONLY. NOT FOR USE IN DIAGNOSTIC PROCEDURES"

Our Abpromise to you: Quality guaranteed and expert technical support

- Replacement or refund for products not performing as stated on the datasheet

- Valid for 12 months from date of delivery
- Response to your inquiry within 24 hours
- We provide support in Chinese, English, French, German, Japanese and Spanish
- Extensive multi-media technical resources to help you
- We investigate all quality concerns to ensure our products perform to the highest standards

If the product does not perform as described on this datasheet, we will offer a refund or replacement. For full details of the Abpromise, please visit <https://www.abcam.co.jp/abpromise> or contact our technical team.

Terms and conditions

- Guarantee only valid for products bought direct from Abcam or one of our authorized distributors