





Anti-Calcium Pump PMCA2 ATPase antibody ab3529

★★★★★ **3 Abreviews** **13 References** 画像数 3

製品の概要

製品名	Anti-Calcium Pump PMCA2 ATPase antibody
製品の詳細	Rabbit polyclonal to Calcium Pump PMCA2 ATPase
由来種	Rabbit
特異性	Detects PMCA 2a and 2b ATPase.
アプリケーション	適用あり: IHC-FoFr, ICC, ELISA, IHC-Fr, WB, ICC/IF, IHC-P, IP
種交差性	交差種: Mouse, Rat, Chicken, Human, Pig, Non human primates
免疫原	Synthetic peptide corresponding to Human Calcium Pump PMCA2 ATPase aa 1-100.  Run BLAST with   Run BLAST with 
ポジティブ・コントロール	IHC-P: Human brain and cervical carcinoma tissue.
特記事項	<p>The Life Science industry has been in the grips of a reproducibility crisis for a number of years. Abcam is leading the way in addressing this with our range of recombinant monoclonal antibodies and knockout edited cell lines for gold-standard validation. Please check that this product meets your needs before purchasing.</p> <p>If you have any questions, special requirements or concerns, please send us an inquiry and/or contact our Support team ahead of purchase. Recommended alternatives for this product can be found below, along with publications, customer reviews and Q&As</p>

製品の特性

製品の状態	Liquid
保存方法	Shipped at 4°C. Store at +4°C short term (1-2 weeks). Upon delivery aliquot. Store at -20°C or -80°C. Avoid freeze / thaw cycle.
バッファー	Preservative: 0.05% Sodium azide Constituents: 0.1% BSA, 99% PBS
精製度	Immunogen affinity purified
ポリ/モノ	ポリクローナル
アイソタイプ	IgG

アプリケーション

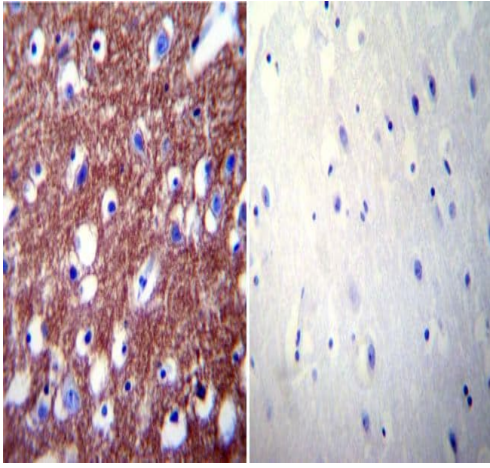
The Abpromise guarantee **Abpromise保証は、** 次のテスト済みアプリケーションにおけるab3529の使用に適用されます
 アプリケーションノートには、推奨の開始希釈率がありますが、適切な希釈率につきましてはご検討ください。

アプリケーション	Abreviews	特記事項
IHC-FoFr	★★★★★ (1)	Use at an assay dependent concentration.
ICC		Use at an assay dependent concentration.
ELISA		Use at an assay dependent concentration.
IHC-Fr		Use at an assay dependent concentration.
WB	★★★★★ (1)	Use at an assay dependent concentration. Predicted molecular weight: 137 kDa.
ICC/IF		Use at an assay dependent concentration. PubMed: 20489728
IHC-P	★★★★★ (1)	Use at an assay dependent concentration.
IP		Use at an assay dependent concentration.

ターゲット情報

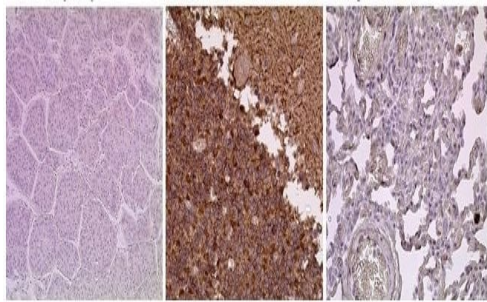
機能	This magnesium-dependent enzyme catalyzes the hydrolysis of ATP coupled with the transport of calcium out of the cell.
組織特異性	Mainly expressed in brain cortex. Found in low levels in skeletal muscle, heart muscle, stomach, liver, kidney and lung. Isoforms containing segment B are found in brain cortex and at low levels in other tissues. Isoforms containing segments X and W are found at low levels in all tissues. Isoforms containing segment A and segment Z are found at low levels in skeletal muscle and heart muscle.
配列類似性	Belongs to the cation transport ATPase (P-type) (TC 3.A.3) family. Type IIb subfamily.
細胞内局在	Cell membrane.

画像



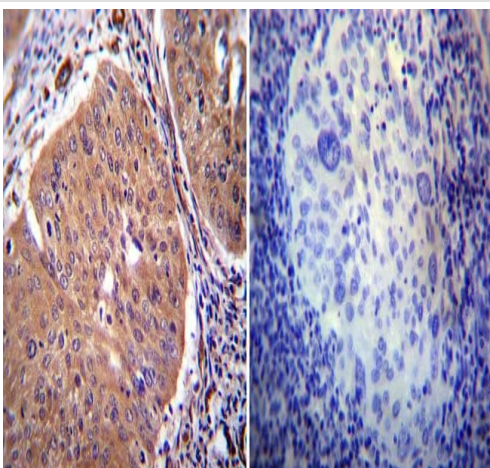
Immunohistochemistry (Formalin/PFA-fixed paraffin-embedded sections) - Anti-Calcium Pump PMCA2 ATPase antibody (ab3529)

Immunohistochemistry was performed on normal biopsies of deparaffinized Human brain tissue. To expose target proteins heat induced antigen retrieval was performed using 10mM sodium citrate (pH6.0) buffer microwaved for 8-15 minutes. Following antigen retrieval tissues were blocked in 3% BSA-PBS for 30 minutes at room temperature. Tissues were then probed at a dilution of 1:200 with a rabbit polyclonal antibody recognizing PMCA2 ATPase ab3529 or without primary antibody (negative control) overnight at 4°C in a humidified chamber. Tissues were washed extensively with PBST and endogenous peroxidase activity was quenched with a peroxidase suppressor. Detection was performed using a biotin-conjugated secondary antibody and SA-HRP followed by colorimetric detection using DAB. Tissues were counterstained with hematoxylin and prepped for mounting.



Immunohistochemistry (Formalin/PFA-fixed paraffin-embedded sections) - Anti-Calcium Pump PMCA2 ATPase antibody (ab3529)

Human cerebellum (Centre panel) and lung (Negative control, right panel) stained for PMCA2 ATPase using ab3529 at 1/20 dilution in immunohistochemical analysis. The left hand panel is a secondary antibody only control.



Immunohistochemistry (Formalin/PFA-fixed paraffin-embedded sections) - Anti-Calcium Pump PMCA2 ATPase antibody (ab3529)

Immunohistochemistry was performed on cancer biopsies of deparaffinized Human cervical carcinoma tissue. To expose target proteins heat induced antigen retrieval was performed using 10mM sodium citrate (pH6.0) buffer microwaved for 8-15 minutes. Following antigen retrieval tissues were blocked in 3% BSA-PBS for 30 minutes at room temperature. Tissues were then probed at a dilution of 1:20 with a rabbit polyclonal antibody recognizing PMCA2 ATPase ab3529 or without primary antibody (negative control) overnight at 4°C in a humidified chamber. Tissues were washed extensively with PBST and endogenous peroxidase activity was quenched with a peroxidase suppressor. Detection was performed using a biotin-conjugated secondary antibody and SA-HRP followed by colorimetric detection using DAB. Tissues were counterstained with hematoxylin and prepped for mounting.

Please note: All products are "FOR RESEARCH USE ONLY. NOT FOR USE IN DIAGNOSTIC PROCEDURES"

Our Abpromise to you: Quality guaranteed and expert technical support

- Replacement or refund for products not performing as stated on the datasheet
- Valid for 12 months from date of delivery
- Response to your inquiry within 24 hours

- We provide support in Chinese, English, French, German, Japanese and Spanish
- Extensive multi-media technical resources to help you
- We investigate all quality concerns to ensure our products perform to the highest standards

If the product does not perform as described on this datasheet, we will offer a refund or replacement. For full details of the Abpromise, please visit <https://www.abcam.co.jp/abpromise> or contact our technical team.

Terms and conditions

- Guarantee only valid for products bought direct from Abcam or one of our authorized distributors