




Anti-Calcineurin B/PPP3R1 antibody ab230899

画像数 2

製品の概要

製品名	Anti-Calcineurin B/PPP3R1 antibody
製品の詳細	Rabbit polyclonal to Calcineurin B/PPP3R1
由来種	Rabbit
アプリケーション	適用あり: IHC-P, WB
種交差性	交差種: Mouse, Rat, Human 交差が予測される動物種: Cow 
免疫原	Recombinant fragment corresponding to Human Calcineurin B/PPP3R1 aa 1 to the C-terminus. Database link: P63098  Run BLAST with  Run BLAST with
ポジティブ・コントロール	WB: SH-SY5Y, SW480, HL-60 and MCF7 cell extracts; mouse brain, spleen and lung cell extracts; rat brain and testis cell extracts. IHC-P: Human brain cortex tissue.
特記事項	<p>The Life Science industry has been in the grips of a reproducibility crisis for a number of years. Abcam is leading the way in addressing this with our range of recombinant monoclonal antibodies and knockout edited cell lines for gold-standard validation. Please check that this product meets your needs before purchasing.</p> <p>If you have any questions, special requirements or concerns, please send us an inquiry and/or contact our Support team ahead of purchase. Recommended alternatives for this product can be found below, along with publications, customer reviews and Q&As</p>

製品の特性

製品の状態	Liquid
保存方法	Shipped at 4°C. Store at +4°C short term (1-2 weeks). Upon delivery aliquot. Store at -20°C long term. Avoid freeze / thaw cycle.
バッファー	pH: 7.30 Preservative: 0.02% Sodium azide Constituent: PBS
精製度	Affinity purified
ポリ/モノ	ポリクローナル
アイソタイプ	IgG

アプリケーション

The Abpromise guarantee **Abpromise保証は、次のテスト済みアプリケーションにおけるab230899の使用に適用されます**
アプリケーションノートには、推奨の開始希釈率がありますが、適切な希釈率につきましてはご検討ください。

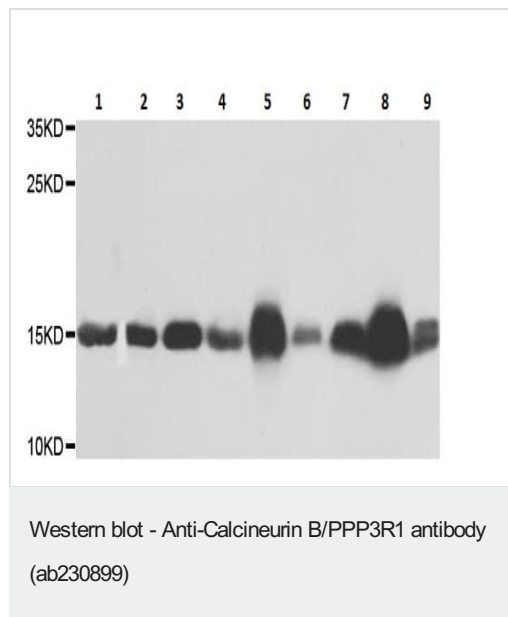
アプリケーション	Abreviews	特記事項
IHC-P		1/50 - 1/100. Perform heat mediated antigen retrieval before commencing with IHC staining protocol.
WB		1/500 - 1/2000. Predicted molecular weight: 19 kDa.

ターゲット情報

機能 Regulatory subunit of calcineurin, a calcium-dependent, calmodulin stimulated protein phosphatase. Confers calcium sensitivity.

配列類似性 Belongs to the calcineurin regulatory subunit family.
Contains 4 EF-hand domains.

画像



All lanes : Anti-Calcineurin B/PPP3R1 antibody (ab230899) at 1/500 dilution

Lane 1 : SH-SY5Y (human neuroblastoma cell line from bone marrow) cell extract

Lane 2 : SW480 (human colorectal adenocarcinoma cell line) cell extract

Lane 3 : HL-60 (human promyelocytic leukemia cell line) cell extract

Lane 4 : MCF7 (human breast adenocarcinoma cell line) cell extract

Lane 5 : Mouse brain cell extract

Lane 6 : Mouse spleen cell extract

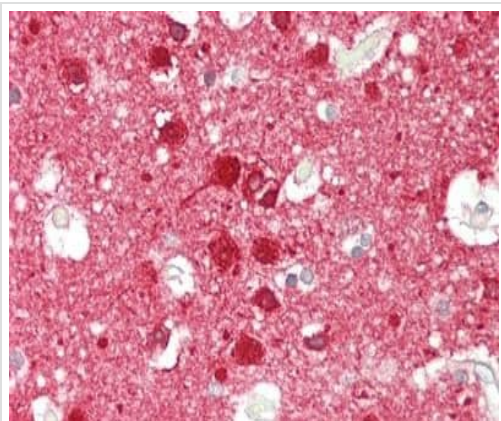
Lane 7 : Mouse lung cell extract

Lane 8 : Rat brain cell extract

Lane 9 : Rat testis cell extract

Developed using the ECL technique.

Predicted band size: 19 kDa



Formalin-fixed, paraffin-embedded human brain cortex tissue stained for Calcineurin B/PPP3R1 with ab230899 at 1/50 dilution in immunohistochemical analysis.

Immunohistochemistry (Formalin/PFA-fixed paraffin-embedded sections) - Anti-Calcineurin B/PPP3R1 antibody (ab230899)

Please note: All products are "FOR RESEARCH USE ONLY. NOT FOR USE IN DIAGNOSTIC PROCEDURES"

Our Abpromise to you: Quality guaranteed and expert technical support

- Replacement or refund for products not performing as stated on the datasheet
- Valid for 12 months from date of delivery
- Response to your inquiry within 24 hours

- We provide support in Chinese, English, French, German, Japanese and Spanish
- Extensive multi-media technical resources to help you
- We investigate all quality concerns to ensure our products perform to the highest standards

If the product does not perform as described on this datasheet, we will offer a refund or replacement. For full details of the Abpromise, please visit <https://www.abcam.co.jp/abpromise> or contact our technical team.

Terms and conditions

- Guarantee only valid for products bought direct from Abcam or one of our authorized distributors