


Anti-Calbindin antibody ab49899

★★★★★ [6 Abreviews](#) [7 References](#) [画像数 3](#)

製品の概要

製品名	Anti-Calbindin antibody
製品の詳細	Rabbit polyclonal to Calbindin
由来種	Rabbit
特異性	We recommend the use of RabMAb ab108404 for testing in IHC and ICC/IF for this target.
アプリケーション	適用あり: IP, WB
種交差性	交差種: Mouse, Rat, Human 交差が予測される動物種: Rabbit, Hamster, Cow, Pig 
免疫原	Synthetic peptide conjugated to KLH derived from within residues 50 - 150 of Mouse Calbindin.Immunogen の所有権に関して(Peptide available as ab60452 .)
特記事項	<p>The Life Science industry has been in the grips of a reproducibility crisis for a number of years. Abcam is leading the way in addressing this with our range of recombinant monoclonal antibodies and knockout edited cell lines for gold-standard validation. Please check that this product meets your needs before purchasing.</p> <p>If you have any questions, special requirements or concerns, please send us an inquiry and/or contact our Support team ahead of purchase. Recommended alternatives for this product can be found below, along with publications, customer reviews and Q&As</p>

製品の特性

製品の状態	Liquid
保存方法	Shipped at 4°C. Store at +4°C short term (1-2 weeks). Upon delivery aliquot. Store at -20°C or -80°C. Avoid freeze / thaw cycle.
バッファー	<p>pH: 7.40</p> <p>Preservative: 0.02% Sodium azide</p> <p>Constituent: PBS</p> <p>Batches of this product that have a concentration < 1mg/ml may have BSA added as a stabilising agent. If you would like information about the formulation of a specific lot, please contact our scientific support team who will be happy to help.</p>
精製度	Immunogen affinity purified
ポリ/モノ	ポリクローナル

アイソタイプ

IgG

アプリケーション

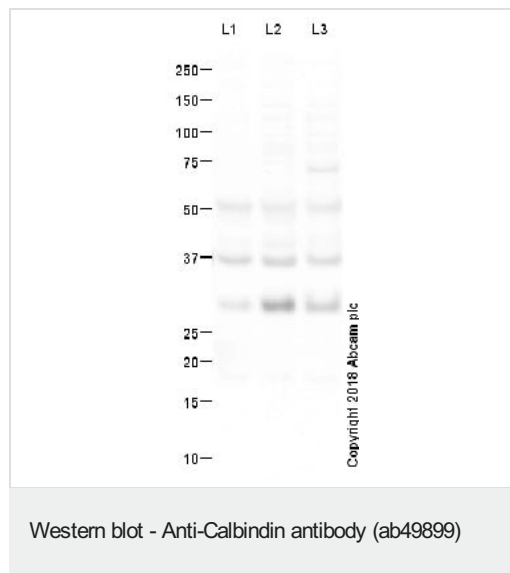
The Abpromise guarantee Abpromise保証は、 次のテスト済みアプリケーションにおけるab49899の使用に適用されます
アプリケーションノートには、推奨の開始希釈率がありますが、適切な希釈率につきましてはご検討ください。

アプリケーション	Abreviews	特記事項
IP		Use at an assay dependent concentration.
WB		Use a concentration of 1 µg/ml. Detects a band of approximately 29 kDa (predicted molecular weight: 30 kDa).

ターゲット情報

機能	Buffers cytosolic calcium. May stimulate a membrane Ca(2+)-ATPase and a 3',5'-cyclic nucleotide phosphodiesterase.
配列類似性	Belongs to the calbindin family. Contains 5 EF-hand domains.
ドメイン	This protein has four functional calcium-binding sites; potential sites II and VI have lost affinity for calcium.

画像



All lanes : ab49899 at 1 µg/ml

Lane 1 : Brain (human) tissue lysate

Lane 2 : Brain (Mouse) Tissue lysate

Lane 3 : Brain (Rat) Tissue lysate

Lysates/proteins at 10 µg per lane.

Secondary

All lanes : Goat polyclonal to Rabbit IgG - H&L - Pre-Adsorbed (HRP) at 1/3000 dilution

Developed using the ECL technique.

Performed under reducing conditions.

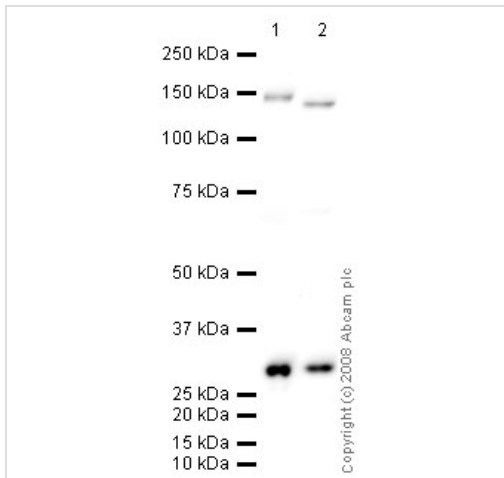
Predicted band size: 30 kDa

Observed band size: 30 kDa

Additional bands at: 37 kDa, 51 kDa. We are unsure as to the

identity of these extra bands.

Exposure time: 30 seconds



Western blot - Anti-Calbindin antibody (ab49899)

All lanes : Anti-Calbindin antibody (ab49899) at 1 µg/ml

Lane 1 : Human kidney tissue lysate - total protein (**ab30203**)

Lane 2 : Kidney (Mouse) Tissue Lysate

Lysates/proteins at 10 µg per lane.

Secondary

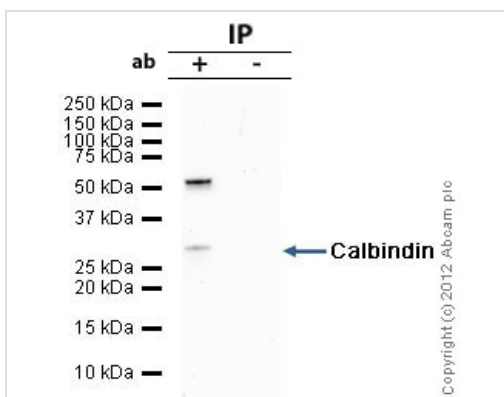
All lanes : Goat polyclonal to Rabbit IgG - H&L - Pre-Adsorbed (HRP) at 1/3000 dilution

Performed under reducing conditions.

Predicted band size: 30 kDa

Observed band size: 30 kDa

Additional bands at: 150 kDa. We are unsure as to the identity of these extra bands.



Immunoprecipitation - Anti-Calbindin antibody (ab49899)

Calbindin - Neuronal Marker was immunoprecipitated using 0.5mg Mouse kidney whole tissue extract, 5µg of Rabbit polyclonal to Calbindin and 50µl of protein G magnetic beads (+). No antibody was added to the control (-).

The antibody was incubated under agitation with Protein G beads for 10min, Mouse kidney whole tissue extract lysate diluted in RIPA buffer was added to each sample and incubated for a further 10min under agitation.

Proteins were eluted by addition of 40µl SDS loading buffer and incubated for 10min at 70°C; 10µl of each sample was separated on a SDS PAGE gel, transferred to a nitrocellulose membrane, blocked with 5% BSA and probed with ab49899.

Secondary: Clean blot (HRP conjugate) at 1/1000 dilution.

Band: 30kDa: Calbindin - Neuronal Marker.

Please note: All products are "FOR RESEARCH USE ONLY. NOT FOR USE IN DIAGNOSTIC PROCEDURES"

Our Abpromise to you: Quality guaranteed and expert technical support

- Replacement or refund for products not performing as stated on the datasheet

- Valid for 12 months from date of delivery
- Response to your inquiry within 24 hours
- We provide support in Chinese, English, French, German, Japanese and Spanish
- Extensive multi-media technical resources to help you
- We investigate all quality concerns to ensure our products perform to the highest standards

If the product does not perform as described on this datasheet, we will offer a refund or replacement. For full details of the Abpromise, please visit <https://www.abcam.co.jp/abpromise> or contact our technical team.

Terms and conditions

- Guarantee only valid for products bought direct from Abcam or one of our authorized distributors