


Anti-CABP antibody [EPR7916] - BSA and Azide free ab248215

リコンビナント **RabMAb**

画像数 2

製品の概要

製品名	Anti-CABP antibody [EPR7916] - BSA and Azide free
製品の詳細	Rabbit monoclonal [EPR7916] to CABP - BSA and Azide free
由来種	Rabbit
アプリケーション	<p>適用あり: WB</p> <p>適用なし: Flow Cyt, ICC/IF, IHC-P or IP</p>
種交差性	<p>交差種: Human</p> <p>交差が予測される動物種: Mouse </p>
免疫原	Synthetic peptide. This information is proprietary to Abcam and/or its suppliers.
特記事項	<p>ab248215 is the carrier-free version of ab128910.</p> <p>Our carrier-free antibodies are typically supplied in a PBS-only formulation, purified and free of BSA, sodium azide and glycerol. The carrier-free buffer and high concentration allow for increased conjugation efficiency.</p> <p>This conjugation-ready format is designed for use with fluorochromes, metal isotopes, oligonucleotides, and enzymes, which makes them ideal for antibody labelling, functional and cell-based assays, flow-based assays (e.g. mass cytometry) and Multiplex Imaging applications.</p> <p>Use our conjugation kits for antibody conjugates that are ready-to-use in as little as 20 minutes with <1 minute hands-on-time and 100% antibody recovery: available for fluorescent dyes, HRP, biotin and gold.</p> <p>This product is compatible with the Maxpar[®] Antibody Labeling Kit from Fluidigm, without the need for antibody preparation. Maxpar[®] is a trademark of Fluidigm Canada Inc.</p> <p>This product is a recombinant monoclonal antibody, which offers several advantages including:</p> <ul style="list-style-type: none"> - High batch-to-batch consistency and reproducibility - Improved sensitivity and specificity - Long-term security of supply - Animal-free production <p>For more information see here.</p> <p>Our RabMAb[®] technology is a patented hybridoma-based technology for making rabbit monoclonal antibodies. For details on our patents, please refer to RabMAb[®] patents.</p> <p>Rat: We have preliminary internal testing data to indicate this antibody may not react with this species. Please contact us for more information.</p>

製品の特性

製品の状態	Liquid
保存方法	Shipped at 4°C. Store at +4°C. Do Not Freeze.
バッファー	pH: 7.2 Constituent: PBS
キャリア・フリー	はい
精製度	Protein A purified
ポリ/モノ	モノクローナル
クローン名	EPR7916
アイソタイプ	IgG

アプリケーション

The Abpromise guarantee **Abpromise保証は、**次のテスト済みアプリケーションにおけるab248215の使用に適用されます
アプリケーションノートには、推奨の開始希釈率がありますが、適切な希釈率につきましてはご検討ください。

アプリケーション	Abreviews	特記事項
WB		Use at an assay dependent concentration. Detects a band of approximately 40 kDa (predicted molecular weight: 40 kDa).

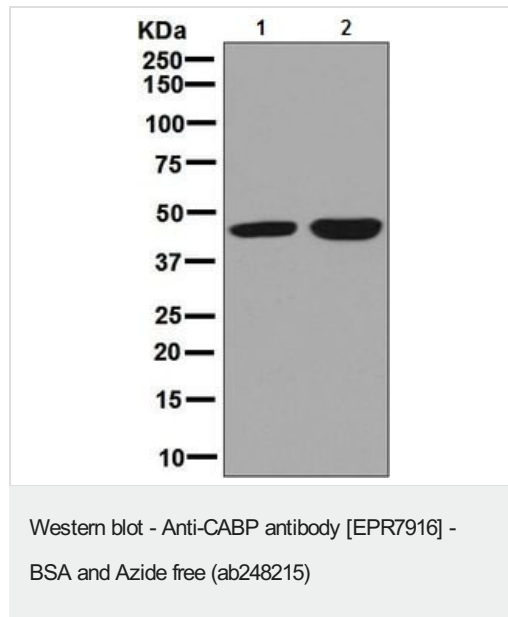
追加情報 Is unsuitable for Flow Cyt, ICC/IF, IHC-P or IP.

ターゲット情報

機能	Modulates calcium-dependent activity of inositol 1,4,5-triphosphate receptors (ITPRs). Inhibits agonist-induced intracellular calcium signaling. Enhances inactivation and does not support calcium-dependent facilitation of voltage-dependent P/Q-type calcium channels. Causes calcium-dependent facilitation and inhibits inactivation of L-type calcium channels by binding to the same sites as calmodulin in the C-terminal domain of CACNA1C, but resulting in an opposite effects on channel function. Suppresses the calcium-dependent inactivation of CACNA1D (By similarity). Inhibits TRPC5 channels. Prevents NMDA receptor-induced cellular degeneration.
組織特異性	Retina and brain. Somatodendritic compartment of neurons. Calbrain was found exclusively in brain where it is abundant in the hippocampus, habenular area in the epithalamus and in the cerebellum.
配列類似性	Contains 4 EF-hand domains.
ドメイン	EF-1 binds magnesium constitutively under physiological conditions, EF-3 and EF-4 bind calcium cooperatively and EF-2 binds neither calcium nor magnesium.
翻訳後修飾	Phosphorylated. The phosphorylation regulates the activity.
細胞内局在	Cytoplasm > cell cortex. Cell membrane. S-CaBP1 is localized at or near the plasma membrane; Cytoplasm > cytoskeleton. Cytoplasm > perinuclear region. Cell membrane. Golgi apparatus. Cell junction > synapse > postsynaptic cell membrane > postsynaptic density. L-CaBP1 is associated most likely with the cytoskeletal structures, whereas S-CaBP1 is localized at or near the plasma

membrane and Cytoplasm > cytoskeleton. L-CaBP1 is associated most likely with the cytoskeletal structures.

画像



All lanes : Anti-CABP antibody [EPR7916] ([ab128910](#)) at 1/1000 dilution

Lane 1 : Y79 cell lysate

Lane 2 : U-87 MG cell lysate

Lysates/proteins at 10 µg per lane.

Secondary

All lanes : HRP labelled goat anti-rabbit at 1/2000 dilution

Predicted band size: 40 kDa

This data was developed using [ab128910](#), the same antibody clone in a different buffer formulation.

Why choose a recombinant antibody?

Research with confidence
Consistent and reproducible results

Long-term and scalable supply
Recombinant technology

Success from the first experiment
Confirmed specificity

Ethical standards compliant
Animal-free production

Anti-CABP antibody [EPR7916] - BSA and Azide free (ab248215)

Please note: All products are "FOR RESEARCH USE ONLY. NOT FOR USE IN DIAGNOSTIC PROCEDURES"

Our Abpromise to you: Quality guaranteed and expert technical support

- Replacement or refund for products not performing as stated on the datasheet
- Valid for 12 months from date of delivery
- Response to your inquiry within 24 hours
- We provide support in Chinese, English, French, German, Japanese and Spanish
- Extensive multi-media technical resources to help you
- We investigate all quality concerns to ensure our products perform to the highest standards

If the product does not perform as described on this datasheet, we will offer a refund or replacement. For full details of the Abpromise, please visit <https://www.abcam.co.jp/abpromise> or contact our technical team.

Terms and conditions

- Guarantee only valid for products bought direct from Abcam or one of our authorized distributors