

Anti-C5 / C5b antibody [EPR23940-3] ab275931

リコンビナント **RabMAb**

1 References [画像数 6](#)

製品の概要

製品名	Anti-C5 / C5b antibody [EPR23940-3]
製品の詳細	Rabbit monoclonal [EPR23940-3] to C5 / C5b
由来種	Rabbit
アプリケーション	適用あり: WB, IHC-P 適用なし: Flow Cyt, ICC/IF or IP
種交差性	交差種: Mouse, Rat, Human
免疫原	Recombinant fragment. This information is proprietary to Abcam and/or its suppliers.
ポジティブ・コントロール	WB: Human plasma and liver tissue lysate; Mouse plasma; Rat plasma. IHC-P: Human liver and breast tissue.
特記事項	This product is a recombinant monoclonal antibody, which offers several advantages including: <ul style="list-style-type: none"> - High batch-to-batch consistency and reproducibility - Improved sensitivity and specificity - Long-term security of supply - Animal-free production For more information see here . Our RabMAb [®] technology is a patented hybridoma-based technology for making rabbit monoclonal antibodies. For details on our patents, please refer to RabMAb[®] patents .

製品の特性

製品の状態	Liquid
保存方法	Shipped at 4°C. Store at +4°C short term (1-2 weeks). Upon delivery aliquot. Store at -20°C long term. Avoid freeze / thaw cycle.
バッファー	Preservative: 0.01% Sodium azide Constituents: 59.94% PBS, 40% Glycerol (glycerin, glycerine), 0.05% BSA
精製度	Protein A purified
ポリ/モノ	モノクローナル
クローン名	EPR23940-3
アイソタイプ	IgG

アプリケーション

The Abpromise guarantee Abpromise保証は、 次のテスト済みアプリケーションにおけるab275931の使用に適用されます
アプリケーションノートには、推奨の開始希釈率がありますが、適切な希釈率につきましてはご確認ください。

アプリケーション	Abreviews	特記事項
WB		1/1000. Detects a band of approximately 70, 190 kDa (predicted molecular weight: 188 kDa).
IHC-P		1/4000. Perform heat mediated antigen retrieval with Tris/EDTA buffer pH 9.0 before commencing with IHC staining protocol.

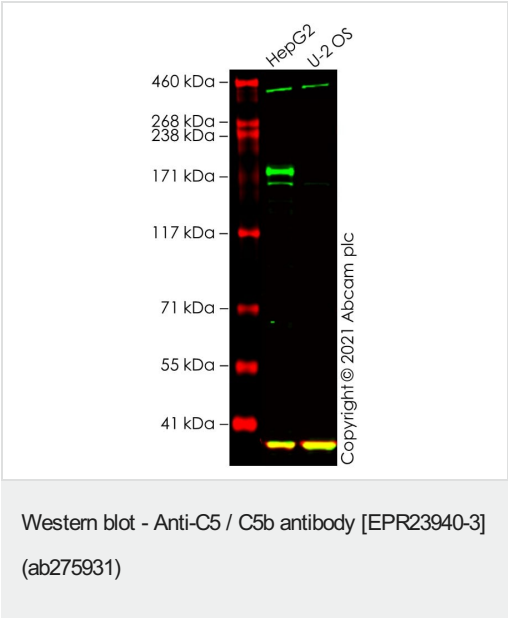
追加情報 Is unsuitable for Flow Cyt, ICC/IF or IP.

ターゲット情報

関連性 C5 is synthesised in the liver as a single polypeptide chain. Before secretion the molecule is glycosylated and secreted into plasma as a 190kDa glycoprotein consisting of a disulphide linked alpha-chain (115kDa) and beta-chain (75kDa). C5 precursor is first processed by the removal of 4 basic residues, forming two chains, beta and alpha, linked by a disulfide bond. C5 convertase activates C5 by cleaving the alpha chain, releasing C5a anaphylatoxin and generating C5b (beta chain + alpha' chain).

細胞内局在 Secreted

画像



All lanes : Anti-C5 / C5b antibody [EPR23940-3] (ab275931) at 1/1000 dilution

Lane 1 : HepG2 cell lysate

Lane 2 : U-2 OS cell lysate

Lysates/proteins at 20 µg per lane.

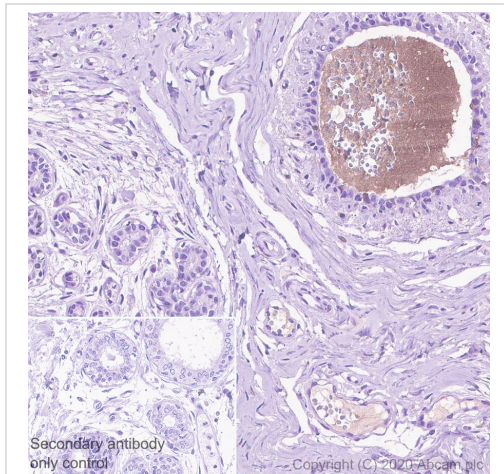
Performed under reducing conditions.

Predicted band size: 188 kDa

Observed band size: 165-180 kDa

False colour image of Western blot: Anti-C5 / C5b antibody [EPR23940-3] staining at 1/1000 dilution, shown in green; Mouse anti-GAPDH antibody [6C5] ([ab8245](#)) loading control staining at 1/20000 dilution, shown in red. In Western blot, ab275931 was

shown to bind specifically to C5 / C5b. First, samples were run on an SDS-PAGE gel then transferred onto a nitrocellulose membrane. Membranes were blocked in 3 % milk in TBS-0.1 % Tween[®] 20 (TBS-T) before incubation with primary antibodies overnight at 4 °C. Blots were washed four times in TBS-T, incubated with secondary antibodies for 1 h at room temperature, washed again four times then imaged. Secondary antibodies used were Goat anti-Rabbit IgG H&L (IRDye[®] 800CW) preabsorbed (**ab216773**) and Goat anti-Mouse IgG H&L (IRDye[®] 680RD) preabsorbed (**ab216776**) at 1/20000 dilution.

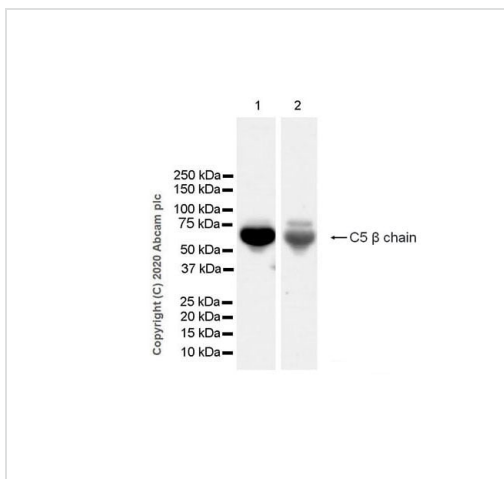


Immunohistochemistry (Formalin/PFA-fixed paraffin-embedded sections) - Anti-C5 / C5b antibody [EPR23940-3] (ab275931)

Immunohistochemical analysis of paraffin-embedded human breast tissue labeling C5/C5b with ab275931 at 1/4000 dilution followed by a ready to use Rabbit specific IHC polymer detection kit HRP/DAB (**ab209101**). Positive staining on plasma of human breast. The section was incubated with ab275931 for 30 mins at room temperature. The immunostaining was performed on a Leica Biosystems BOND[®] RX instrument. Counterstained with Hematoxylin.

Secondary antibody only control: Secondary antibody is a ready to use Rabbit specific IHC polymer detection kit HRP/DAB (**ab209101**).

Heat mediated antigen retrieval with Tris-EDTA buffer (pH 9.0, epitope retrieval solution2) for 20 mins.



Western blot - Anti-C5 / C5b antibody [EPR23940-3] (ab275931)

All lanes : Anti-C5 / C5b antibody [EPR23940-3] (ab275931) at 1/1000 dilution

Lane 1 : Mouse plasma

Lane 2 : Rat plasma

Lysates/proteins at 20 µg per lane.

Secondary

All lanes : Goat Anti-Rabbit IgG, (H+L), Peroxidase conjugated (**ab97051**) at 1/100000 dilution

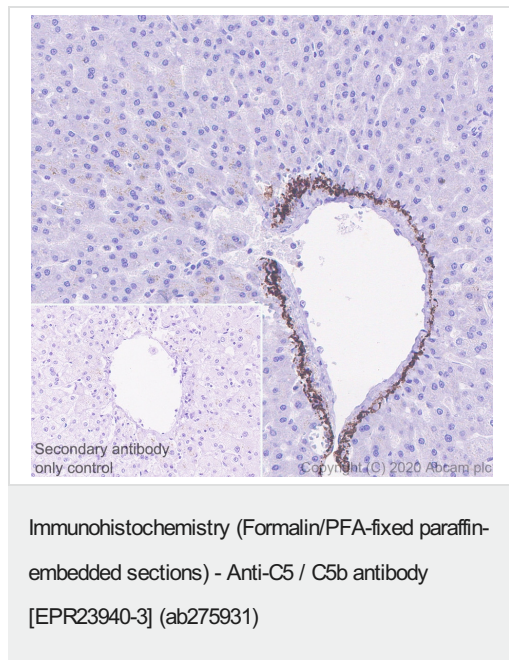
Predicted band size: 188 kDa

Observed band size: 70 kDa

Blocking and diluting buffer and concentration: 5% NFDM/TBST.

The molecular weight observed is consistent with what has been described in the literature (PMID: 23401592, 25387724).

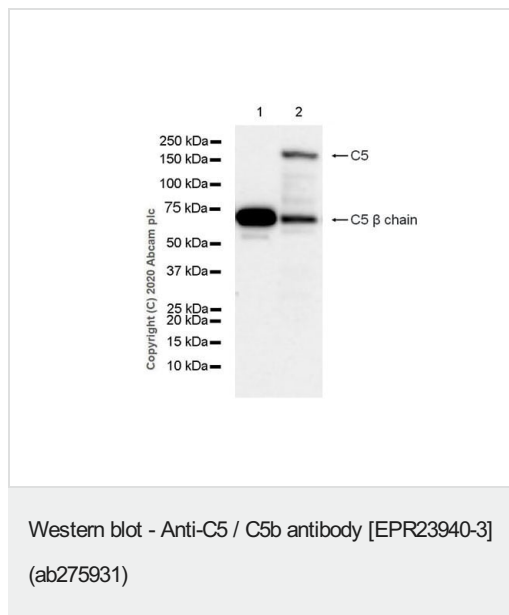
Exposure time: 48 seconds.



Immunohistochemical analysis of paraffin-embedded human liver tissue labeling C5/C5b with ab275931 at 1/4000 dilution followed by a ready to use Rabbit specific IHC polymer detection kit HRP/DAB (**ab209101**). Positive staining on human liver. The section was incubated with ab275931 for 30 mins at room temperature. The immunostaining was performed on a Leica Biosystems BOND® RX instrument. Counterstained with Hematoxylin.

Secondary antibody only control: Secondary antibody is a ready to use Rabbit specific IHC polymer detection kit HRP/DAB (**ab209101**).

Heat mediated antigen retrieval with Tris-EDTA buffer (pH 9.0, epitope retrieval solution2) for 20 mins.



All lanes : Anti-C5 / C5b antibody [EPR23940-3] (ab275931) at 1/1000 dilution

Lane 1 : Human plasma at 10 µg

Lane 2 : Human liver tissue lysate at 40 µg

Secondary

All lanes : Goat Anti-Rabbit IgG (HRP) with minimal cross-reactivity with human IgG at 1/2000 dilution

Predicted band size: 188 kDa

Observed band size: 190,70 kDa

Blocking and diluting buffer and concentration: 5% NFDM/TBST.

Samples are non-boiled as boiling may cause protein aggregates.

The molecular weight observed is consistent with what has been described in the literature (PMID: 24071736, 23401592, 25387724)

Exposure time: 59 seconds.

Why choose a recombinant antibody?



Research with confidence
Consistent and reproducible results



Long-term and scalable supply
Recombinant technology



Success from the first experiment
Confirmed specificity



Ethical standards compliant
Animal-free production

Anti-C5 / C5b antibody [EPR23940-3] (ab275931)

Please note: All products are "FOR RESEARCH USE ONLY. NOT FOR USE IN DIAGNOSTIC PROCEDURES"

Our Abpromise to you: Quality guaranteed and expert technical support

- Replacement or refund for products not performing as stated on the datasheet
- Valid for 12 months from date of delivery
- Response to your inquiry within 24 hours
- We provide support in Chinese, English, French, German, Japanese and Spanish
- Extensive multi-media technical resources to help you
- We investigate all quality concerns to ensure our products perform to the highest standards

If the product does not perform as described on this datasheet, we will offer a refund or replacement. For full details of the Abpromise, please visit <https://www.abcam.co.jp/abpromise> or contact our technical team.

Terms and conditions

- Guarantee only valid for products bought direct from Abcam or one of our authorized distributors