

Anti-C2 antibody [EPR17979] ab209900

リコンビナント **RabMAb**

1 References [画像数 3](#)

製品の概要

製品名	Anti-C2 antibody [EPR17979]
製品の詳細	Rabbit monoclonal [EPR17979] to C2
由来種	Rabbit
アプリケーション	適用あり: WB
種交差性	交差種: Mouse, Human
免疫原	Synthetic peptide. This information is proprietary to Abcam and/or its suppliers.
ポジティブ・コントロール	WB: Human serum, plasma and fetal kidney lysate; Mouse serum.
特記事項	<p>This product is a recombinant monoclonal antibody, which offers several advantages including:</p> <ul style="list-style-type: none"> - High batch-to-batch consistency and reproducibility - Improved sensitivity and specificity - Long-term security of supply - Animal-free production <p>For more information see here.</p> <p>Our RabMAb[®] technology is a patented hybridoma-based technology for making rabbit monoclonal antibodies. For details on our patents, please refer to RabMAb[®] patents.</p>

製品の特性

製品の状態	Liquid
保存方法	Shipped at 4°C. Store at +4°C short term (1-2 weeks). Upon delivery aliquot. Store at -20°C long term. Avoid freeze / thaw cycle.
バッファー	<p>pH: 7.2</p> <p>Preservative: 0.01% Sodium azide</p> <p>Constituents: 59% PBS, 40% Glycerol (glycerin, glycerine), 0.05% BSA</p>
精製度	Protein A purified
ポリ/モノ	モノクローナル
クローン名	EPR17979
アイソタイプ	IgG

アプリケーション

The Abpromise guarantee

Abpromise保証は、次のテスト済みアプリケーションにおけるab209900の使用に適用されます

アプリケーションノートには、推奨の開始希釈率がありますが、適切な希釈率につきましてはご検討ください。

アプリケーション	Abreviews	特記事項
WB		1/1000. Detects a band of approximately 100 kDa (predicted molecular weight: 83 kDa).

ターゲット情報

機能

Component C2 which is part of the classical pathway of the complement system is cleaved by activated factor C1 into two fragments: C2b and C2a. C2a, a serine protease, then combines with complement factor 4b to generate the C3 or C5 convertase.

関連疾患

Defects in C2 are the cause of complement component 2 deficiency (C2D) [MIM:217000]. A deficiency of the complement classical pathway associated with the development of autoimmune disorders, mainly systemic lupus erythematosus. Skin and joint manifestations are common and renal disease is relatively rare. Patients with complement component 2 deficiency are also reported to have recurrent or invasive infections.

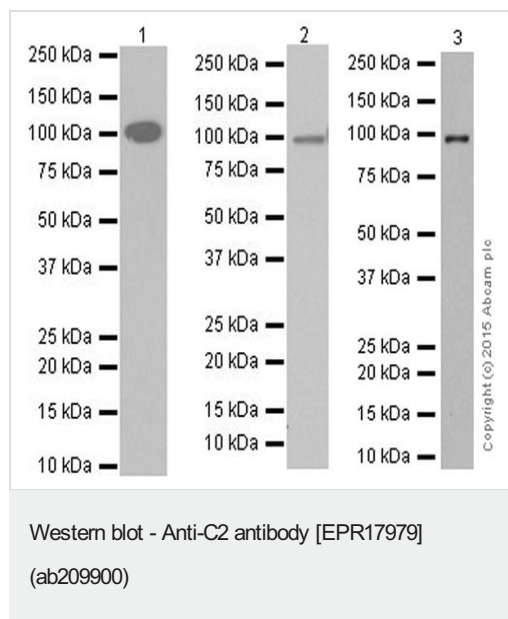
配列類似性

Belongs to the peptidase S1 family.
Contains 1 peptidase S1 domain.
Contains 3 Sushi (CCP/SCR) domains.
Contains 1 VWFA domain.

細胞内局在

Secreted.

画像



All lanes : Anti-C2 antibody [EPR17979] (ab209900) at 1/1000 dilution

Lane 1 : Human serum

Lane 2 : Human plasma

Lane 3 : Human fetal kidney lysate

Lysates/proteins at 10 µg per lane.

Secondary

Lanes 1-2 : Goat Anti-Rabbit IgG Peroxidase Conjugate, specific to the non-reduced form of IgG at 1/10000 dilution

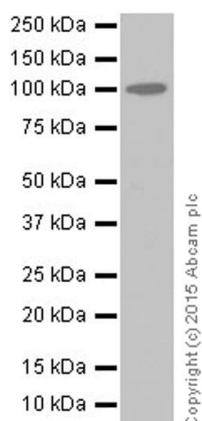
Lane 3 : Goat Anti-Rabbit IgG Peroxidase Conjugate, specific to the non-reduced form of IgG at 1/1000 dilution

Predicted band size: 83 kDa

Observed band size: 100 kDa

Blocking/Dilution buffer: 5% NFDM/TBST.

Exposure time: Lane 1/3: 3 minutes; Lane 2: 30 seconds.



Western blot - Anti-C2 antibody [EPR17979]
(ab209900)

Anti-C2 antibody [EPR17979] (ab209900) at 1/1000 dilution +

Mouse serum at 10 µg

Secondary

Goat Anti-Rabbit IgG H&L (HRP) ([ab97051](#)) at 1/100000 dilution

Predicted band size: 83 kDa

Observed band size: 100 kDa

Exposure time: 1 minute

Blocking/Dilution buffer: 5% NFDM/TBST.

Why choose a recombinant antibody?



Research with confidence
Consistent and reproducible results



Long-term and scalable supply
Recombinant technology



Success from the first experiment
Confirmed specificity



Ethical standards compliant
Animal-free production

Anti-C2 antibody [EPR17979] (ab209900)

Please note: All products are "FOR RESEARCH USE ONLY. NOT FOR USE IN DIAGNOSTIC PROCEDURES"

Our Abpromise to you: Quality guaranteed and expert technical support

- Replacement or refund for products not performing as stated on the datasheet
- Valid for 12 months from date of delivery
- Response to your inquiry within 24 hours
- We provide support in Chinese, English, French, German, Japanese and Spanish

- Extensive multi-media technical resources to help you
- We investigate all quality concerns to ensure our products perform to the highest standards

If the product does not perform as described on this datasheet, we will offer a refund or replacement. For full details of the Abpromise, please visit <https://www.abcam.co.jp/abpromise> or contact our technical team.

Terms and conditions

- Guarantee only valid for products bought direct from Abcam or one of our authorized distributors