

### Anti-C1QC antibody [EPR2984Y] ab75756

リコンビナント **RabMAb**

#### 4 References [画像数 4](#)

#### 製品の概要

製品名	Anti-C1QC antibody [EPR2984Y]
製品の詳細	Rabbit monoclonal [EPR2984Y] to C1QC
由来種	Rabbit
アプリケーション	<b>適用あり:</b> Flow Cyt (Intra), WB, IHC-P
種交差性	<b>交差種:</b> Human
免疫原	Synthetic peptide within Human C1QC aa 150-250. The exact sequence is proprietary.
ポジティブ・コントロール	WB: Human plasma lysate; IHC-P: Human liver tissue; Flow Cyt (intra): Human Peripheral Blood Mononuclear Cell (PBMC) cells.
特記事項	<p>This product is a recombinant monoclonal antibody, which offers several advantages including:</p> <ul style="list-style-type: none"> <li>- High batch-to-batch consistency and reproducibility</li> <li>- Improved sensitivity and specificity</li> <li>- Long-term security of supply</li> <li>- Animal-free production</li> </ul> <p>For more information <a href="#">see here</a>.</p> <p>Our RabMAb<sup>®</sup> technology is a patented hybridoma-based technology for making rabbit monoclonal antibodies. For details on our patents, please refer to <a href="#">RabMAb<sup>®</sup> patents</a>.</p> <p>Mouse, Rat: We have preliminary internal testing data to indicate this antibody may not react with these species. Please contact us for more information.</p>

#### 製品の特性

製品の状態	Liquid
保存方法	Shipped at 4°C. Upon delivery aliquot and store at -20°C. Avoid freeze / thaw cycles.
バッファー	<p>pH: 7.20</p> <p>Preservative: 0.05% Sodium azide</p> <p>Constituents: 0.1% BSA, 40% Glycerol (glycerin, glycerine), 9.85% Tris glycine, 50% Tissue culture supernatant</p>
精製度	Protein A purified
ポリ/モノ	モノクローナル

クローン名	EPR2984Y
アイソタイプ	IgG

アプリケーション

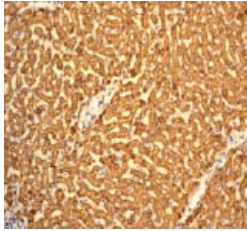
The Abpromise guarantee      **Abpromise保証は、**次のテスト済みアプリケーションにおけるab75756の使用に適用されます  
アプリケーションノートには、推奨の開始希釈率がありますが、適切な希釈率につきましてはご検討ください。

アプリケーション	Abreviews	特記事項
Flow Cyt (Intra)		1/100.
WB		1/500 - 1/1000. Detects a band of approximately 26 kDa (predicted molecular weight: 26 kDa).
IHC-P		1/100 - 1/250. Perform heat mediated antigen retrieval before commencing with IHC staining protocol.

ターゲット情報

機能	C1q associates with the proenzymes C1r and C1s to yield C1, the first component of the serum complement system. The collagen-like regions of C1q interact with the Ca(2+)-dependent C1r(2)C1s(2) proenzyme complex, and efficient activation of C1 takes place on interaction of the globular heads of C1q with the Fc regions of IgG or IgM antibody present in immune complexes.
関連疾患	Defects in C1QC are a cause of complement component C1q deficiency (C1QD) [MIM:613652]. A rare defect resulting in C1 deficiency and impaired activation of the complement classical pathway. C1 deficiency generally leads to severe immune complex disease with features of systemic lupus erythematosus and glomerulonephritis.
配列類似性	Contains 1 C1q domain. Contains 1 collagen-like domain.
翻訳後修飾	O-linked glycans consist of Glc-Gal disaccharides bound to the oxygen atom of post-translationally added hydroxyl groups.
細胞内局在	Secreted.

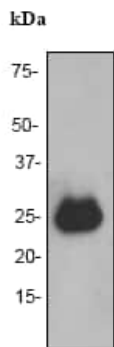
画像



Immunohistochemistry (Formalin/PFA-fixed paraffin-embedded sections) - Anti-C1QC antibody [EPR2984Y] (ab75756)

ab75756 at 1/100 dilution staining C1q in human liver by Immunohistochemistry, Paraffin-embedded tissue.

Perform heat mediated antigen retrieval before commencing with IHC staining protocol.



Western blot - Anti-C1QC antibody [EPR2984Y] (ab75756)

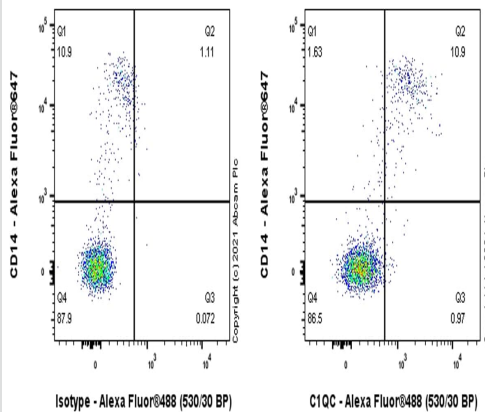
Anti-C1QC antibody [EPR2984Y] (ab75756) at 1/1000 dilution + human plasma lysate at 10 µg

### Secondary

goat anti-rabbit HRP at 1/2000 dilution

**Predicted band size:** 26 kDa





**Observed band size:** 26 kDa



Flow Cytometry (Intracellular) - Anti-C1QC antibody [EPR2984Y] (ab75756)

Flow Cytometry analysis of Human Peripheral Blood Mononuclear Cell (PBMC) cells labeling C1QC with purified ab75756 at 1/100 dilution (10 µg/mL) (Red). Cells were fixed with 2% Paraformaldehyde and permeabilised with 0.1% Tween-20. A Goat anti rabbit IgG (Alexa Fluor® 488, **ab150081**) secondary antibody was used at 1/2000. Isotype control - Rabbit monoclonal IgG (Left).

Why choose a recombinant antibody?

 <p><b>Research with confidence</b> Consistent and reproducible results</p>	 <p><b>Long-term and scalable supply</b> Recombinant technology</p>
 <p><b>Success from the first experiment</b> Confirmed specificity</p>	 <p><b>Ethical standards compliant</b> Animal-free production</p>

Anti-C1QC antibody [EPR2984Y] (ab75756)

**Please note:** All products are "FOR RESEARCH USE ONLY. NOT FOR USE IN DIAGNOSTIC PROCEDURES"

### Our Abpromise to you: Quality guaranteed and expert technical support

- Replacement or refund for products not performing as stated on the datasheet
- Valid for 12 months from date of delivery
- Response to your inquiry within 24 hours
- We provide support in Chinese, English, French, German, Japanese and Spanish
- Extensive multi-media technical resources to help you
- We investigate all quality concerns to ensure our products perform to the highest standards

If the product does not perform as described on this datasheet, we will offer a refund or replacement. For full details of the Abpromise, please visit <https://www.abcam.co.jp/abpromise> or contact our technical team.

### Terms and conditions

- Guarantee only valid for products bought direct from Abcam or one of our authorized distributors