

Anti-C Reactive Protein antibody [Y284] ab32412

リコンビナント **RabMAb**

★★★★★ **6 Abreviews** **35 References** 画像数 7

製品の概要

製品名	Anti-C Reactive Protein antibody [Y284]
製品の詳細	Rabbit monoclonal [Y284] to C Reactive Protein
由来種	Rabbit
特異性	This antibody recognises C Reactive Protein. This antibody is predicted to detect the splice isoform 2 as well as isoform 1.
アプリケーション	適用あり: WB, IP, IHC-P 適用なし: ICC/IF
種交差性	交差種: Human
免疫原	Synthetic peptide. This information is proprietary to Abcam and/or its suppliers.
エピトープ	ab32412 reacts with an epitope located in the C terminal region of C Reactive Protein.
ポジティブ・コントロール	WB: Human serum and plasma lysates. IHC-P: Normal human liver tissue. IP: HepG2 whole cell lysate.
特記事項	<p>This product is a recombinant monoclonal antibody, which offers several advantages including:</p> <ul style="list-style-type: none"> - High batch-to-batch consistency and reproducibility - Improved sensitivity and specificity - Long-term security of supply - Animal-free production <p>For more information see here.</p> <p>Our RabMAb[®] technology is a patented hybridoma-based technology for making rabbit monoclonal antibodies. For details on our patents, please refer to RabMAb[®] patents.</p> <p>Mouse, Rat: We have preliminary internal testing data to indicate this antibody may not react with these species. Please contact us for more information.</p>

製品の特性

製品の状態	Liquid
保存方法	Shipped at 4°C. Store at +4°C short term (1-2 weeks). Upon delivery aliquot. Store at -20°C. Avoid freeze / thaw cycle.
バッファー	pH: 7.20

	Preservative: 0.01% Sodium azide
	Constituents: 59% PBS, 40% Glycerol, 0.05% BSA
精製度	Protein A purified
ポリ/モノ	モノクローナル
クローン名	Y284
アイソタイプ	IgG

アプリケーション

The Abpromise guarantee Abpromise保証は、次のテスト済みアプリケーションにおけるab32412の使用に適用されます
 アプリケーションノートには、推奨の開始希釈率がありますが、適切な希釈率につきましてはご検討ください。

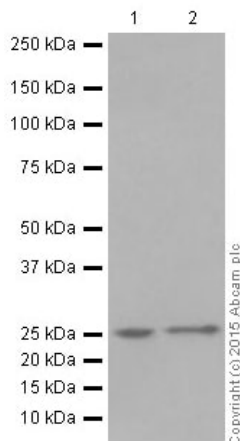
アプリケーション	Abreviews	特記事項
WB	★★★★★ (1)	1/1000 - 1/2000. Predicted molecular weight: 25 kDa.
IP		1/30 - 1/50.
IHC-P	★★★★★ (3)	1/100 - 1/250. Perform heat mediated antigen retrieval with Tris/EDTA buffer pH 9.0 before commencing with IHC staining protocol.

追加情報 Is unsuitable for ICC/IF.

ターゲット情報

機能	Displays several functions associated with host defense: it promotes agglutination, bacterial capsular swelling, phagocytosis and complement fixation through its calcium-dependent binding to phosphorylcholine. Can interact with DNA and histones and may scavenge nuclear material released from damaged circulating cells.
組織特異性	Found in plasma.
配列類似性	Belongs to the pentaxin family. Contains 1 pentaxin domain.
細胞内局在	Secreted.

画像



Western blot - Anti-C Reactive Protein antibody
[Y284] (ab32412)

All lanes : Anti-C Reactive Protein antibody [Y284] (ab32412) at 1/2000 dilution (purified)

Lane 1 : Human serum

Lane 2 : Human plasma

Lysates/proteins at 20 µg per lane.

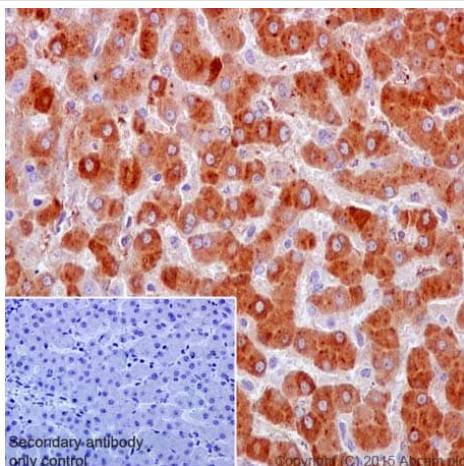
Secondary

All lanes : HRP-conjugated anti-rabbit IgG, specific to the non-reduced form of IgG at 1/50000 dilution

Predicted band size: 25 kDa

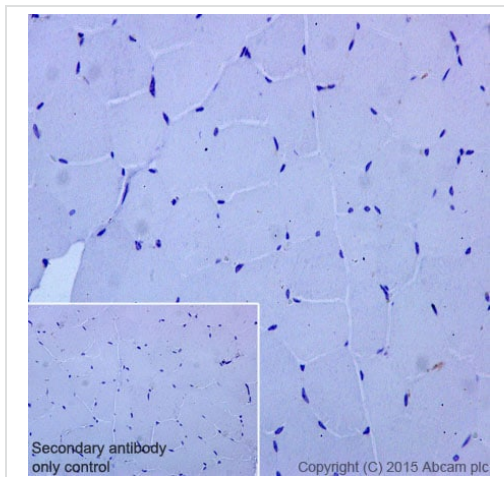
Observed band size: 27 kDa

Blocking and dilution buffer: 5% NFDM/TBST.



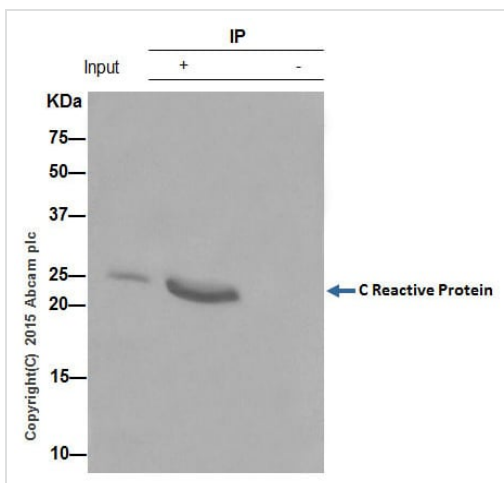
Immunohistochemistry (Formalin/PFA-fixed paraffin-embedded sections) - Anti-C Reactive Protein antibody [Y284] (ab32412)

Immunohistochemistry (Formalin/PFA-fixed paraffin-embedded sections) analysis of human liver tissue labelling C Reactive Protein with purified ab32412 at 1/100. Heat mediated antigen retrieval was performed using Tris/EDTA buffer pH 9. [ab97051](#), a HRP-conjugated goat anti-rabbit IgG (H+L) was used as the secondary antibody (1/500). Negative control using PBS instead of primary antibody. Counterstained with hematoxylin.



Immunohistochemistry (Formalin/PFA-fixed paraffin-embedded sections) - Anti-C Reactive Protein antibody [Y284] (ab32412)

Immunohistochemistry (Formalin/PFA-fixed paraffin-embedded sections) analysis of human skeletal muscle tissue labelling C Reactive Protein with purified ab32412 at 1/100. Heat mediated antigen retrieval was performed using Tris/EDTA buffer pH 9. **ab97051**, a HRP-conjugated goat anti-rabbit IgG (H+L) was used as the secondary antibody (1/500). Negative control using PBS instead of primary antibody. Counterstained with hematoxylin.



Immunoprecipitation - Anti-C Reactive Protein antibody [Y284] (ab32412)

ab32412 (purified) at 1/30 immunoprecipitating C Reactive Protein in HepG2 (human liver hepatocellular carcinoma cell line) whole cell lysate.

Lane 1 (input): HepG2 whole cell lysate (10µg)

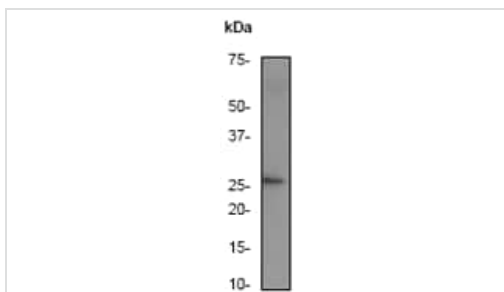
Lane 2 (+): ab32412 + HepG2 whole cell lysate.

Lane 3 (-): Rabbit monoclonal IgG (**ab172730**) instead of ab32412 in HepG2 whole cell lysate.

For western blotting, a HRP-conjugated anti-rabbit IgG, specific to the non-reduced form of IgG was used as the secondary antibody (1/1500).

Blocking buffer and concentration: 5% NFDM/TBST.

Diluting buffer and concentration: 5% NFDM /TBST.

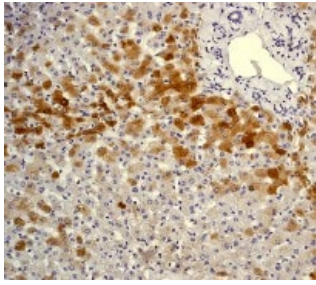


Western blot - Anti-C Reactive Protein antibody [Y284] (ab32412)

Anti-C Reactive Protein antibody [Y284] (ab32412) at 1/1000 dilution (unpurified) + Human serum

Predicted band size: 25 kDa

Observed band size: 27 kDa



Immunohistochemistry (Formalin/PFA-fixed paraffin-embedded) analysis of human normal liver tissue labelling C Reactive Protein using unpurified ab32412 at a dilution of 1/100.

Immunohistochemistry (Formalin/PFA-fixed paraffin-embedded sections) - Anti-C Reactive Protein antibody [Y284] (ab32412)

Why choose a recombinant antibody?



Research with confidence
Consistent and reproducible results



Long-term and scalable supply
Recombinant technology



Success from the first experiment
Confirmed specificity



Ethical standards compliant
Animal-free production

Anti-C Reactive Protein antibody [Y284] (ab32412)

Please note: All products are "FOR RESEARCH USE ONLY. NOT FOR USE IN DIAGNOSTIC PROCEDURES"

Our Abpromise to you: Quality guaranteed and expert technical support

- Replacement or refund for products not performing as stated on the datasheet
- Valid for 12 months from date of delivery
- Response to your inquiry within 24 hours
- We provide support in Chinese, English, French, German, Japanese and Spanish
- Extensive multi-media technical resources to help you
- We investigate all quality concerns to ensure our products perform to the highest standards

If the product does not perform as described on this datasheet, we will offer a refund or replacement. For full details of the Abpromise, please visit <https://www.abcam.co.jp/abpromise> or contact our technical team.

Terms and conditions

- Guarantee only valid for products bought direct from Abcam or one of our authorized distributors