


Anti-c-Jun antibody [E254] - ChIP Grade ab32137

リコンビナント **RabMAb**

★★★★★ **4 Abreviews** **95 References** 画像数 8

製品の概要

製品名	Anti-c-Jun antibody [E254] - ChIP Grade
製品の詳細	Rabbit monoclonal [E254] to c-Jun - ChIP Grade
由来種	Rabbit
特異性	The mouse and rat recommendation is based on the WB results. We do not guarantee IHC-P for mouse and rat.
アプリケーション	適用あり: WB, IHC-P, IP, ChIP 適用なし: Flow Cyt
種交差性	交差種: Mouse, Rat, Human 交差が予測される動物種: Pig 
免疫原	Synthetic peptide within Human c-Jun aa 1-100 (N terminal). The exact sequence is proprietary.
エピトープ	ab32137 reacts with an epitope located in the N terminal region of c-Jun.
ポジティブ・コントロール	WB: NIH 3T3 and HeLa cell lysate. IHC-P: Human lung carcinoma tissue IP: HEK-293 and NIH3T3 cells.
特記事項	This product is a recombinant monoclonal antibody, which offers several advantages including: <ul style="list-style-type: none"> - High batch-to-batch consistency and reproducibility - Improved sensitivity and specificity - Long-term security of supply - Animal-free production For more information see here . Our RabMAb [®] technology is a patented hybridoma-based technology for making rabbit monoclonal antibodies. For details on our patents, please refer to RabMAb[®] patents .

製品の特性

製品の状態	Liquid
保存方法	Shipped at 4°C. Upon delivery aliquot and store at -20°C. Avoid freeze / thaw cycles.
解離定数 (K _D 値)	K _D = 2.23 x 10 ⁻¹¹ M





[Learn more about K_D](#)

バッファー	pH: 7.20 Preservative: 0.01% Sodium azide Constituents: 59% PBS, 40% Glycerol, 0.05% BSA
精製度	Protein A purified
ポリ/モノ	モノクローナル
クローン名	E254
アイソタイプ	IgG

アプリケーション

The Abpromise guarantee Abpromise保証は、次のテスト済みアプリケーションにおけるab32137の使用に適用されます
アプリケーションノートには、推奨の開始希釈率がありますが、適切な希釈率につきましてはご確認ください。

アプリケーション	Abreviews	特記事項
WB	★★★★★ (1)	1/1000 - 1/10000. Predicted molecular weight: 36 kDa.
IHC-P	★★★★★ (2)	1/100 - 1/250. Perform heat mediated antigen retrieval with citrate buffer pH 6 before commencing with IHC staining protocol. The mouse and rat recommendation is based on the WB results. We do not guarantee IHC-P for mouse and rat.
IP		1/60.
ChIP		Use at an assay dependent concentration.

追加情報 Is unsuitable for Flow Cyt.

ターゲット情報

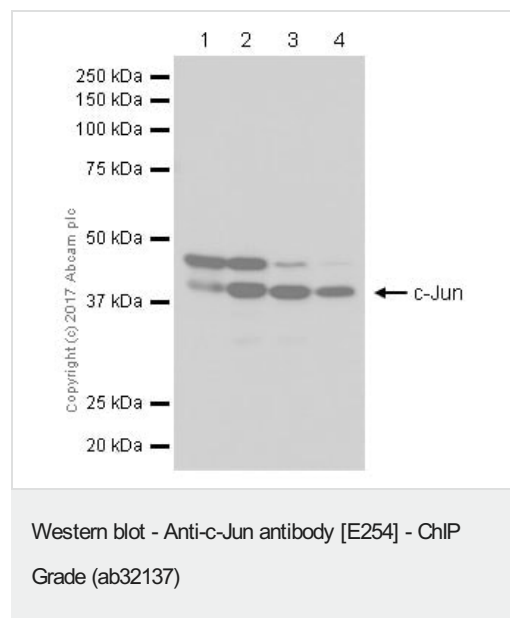
機能	Transcription factor that recognizes and binds to the enhancer heptamer motif 5'-TGA[CG]TCA-3'. Promotes activity of NR5A1 when phosphorylated by HIPK3 leading to increased steroidogenic gene expression upon cAMP signaling pathway stimulation. Involved in activated KRAS-mediated transcriptional activation of USP28 in colorectal cancer (CRC) cells (PubMed:24623306). Binds to the USP28 promoter in colorectal cancer (CRC) cells (PubMed:24623306).
配列類似性	Belongs to the bZIP family. Jun subfamily. Contains 1 bZIP (basic-leucine zipper) domain.
翻訳後修飾	Ubiquitinated by the SCF(FBXW7), leading to its degradation. Ubiquitination takes place following phosphorylation, that promotes interaction with FBXW7. Phosphorylated by CaMK4 and PRKDC; phosphorylation enhances the transcriptional activity. Phosphorylated by HIPK3. Phosphorylated by DYRK2 at Ser-243; this primes the protein for subsequent phosphorylation by GSK3B at Thr-239. Phosphorylated at Thr-239, Ser-243 and Ser-249 by GSK3B; phosphorylation reduces its ability to bind DNA. Phosphorylated by PAK2 at Thr-2, Thr-8, Thr-89, Thr-93 and Thr-286 thereby promoting JUN-mediated cell proliferation and transformation. Phosphorylated by PLK3 following hypoxia or UV irradiation, leading to increase

DNA-binding activity.
Acetylated at Lys-271 by EP300.

細胞内局在

Nucleus.

画像



All lanes : Anti-c-Jun antibody [E254] - ChIP Grade (ab32137) at 1/200 dilution

Lane 1 : HeLa (Human cervix adenocarcinoma epithelial cell) whole cell lysates prepared in RIPA lysis method

Lane 2 : HeLa (Human cervix adenocarcinoma epithelial cell) whole cell lysates prepared in 1% SDS Hot lysis method.

Lane 3 : NIH/3T3 (Mouse embryonic fibroblast) whole cell lysates prepared in RIPA lysis method

Lane 4 : NIH/3T3 (Mouse embryonic fibroblast) whole cell lysates prepared in 1% SDS Hot lysis method 15ug.

Lysates/proteins at 15 µg per lane.

Secondary

All lanes : Goat Anti-Rabbit IgG H&L (HRP) ([ab97051](#)) at 1/20000 dilution

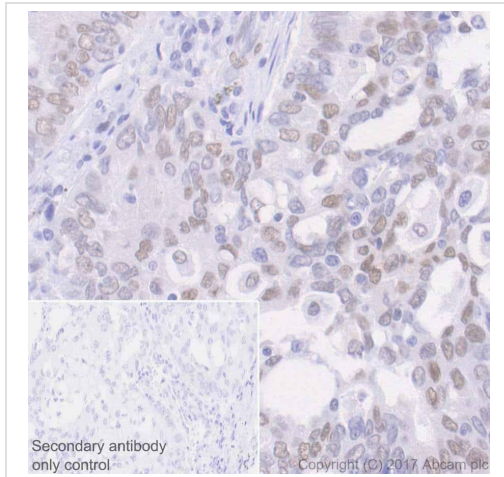
Predicted band size: 36 kDa

Observed band size: 39 kDa

Exposure time: 3 minutes

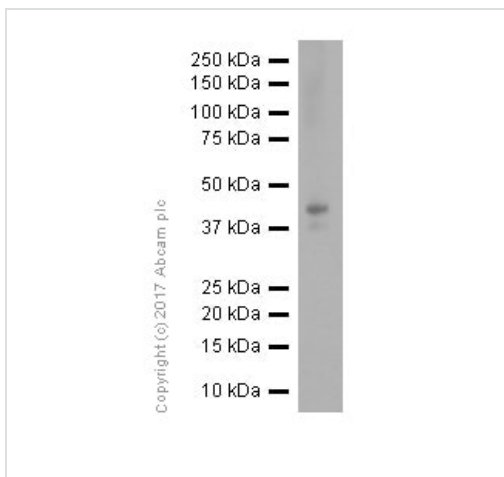
Blocking and diluting buffer: 5% NFDM/TBST

For Lysate preparation protocol, please refer to the protocol book in the protocol section and/or [here \(downloadable copy\)](#).



Immunohistochemistry (Formalin/PFA-fixed paraffin-embedded sections) analysis of human lung carcinoma tissue sections labeling c-Jun with purified ab32137 at 1:100 dilution (1.2 µg/ml). Heat mediated antigen retrieval was performed using **ab93684** (Tris/EDTA buffer, pH 9.0). ImmunoHistoProbe one step HRP Polymer (ready to use) was used as the secondary antibody. Negative control: PBS instead of the primary antibody. Hematoxylin was used as a counterstain.

Immunohistochemistry (Formalin/PFA-fixed paraffin-embedded sections) - Anti-c-Jun antibody [E254] - ChIP Grade (ab32137)



Anti-c-Jun antibody [E254] - ChIP Grade (ab32137) at 1/5000 dilution + PC-12 (Rat adrenal gland pheochromocytoma) whole cell lysate at 20 µg

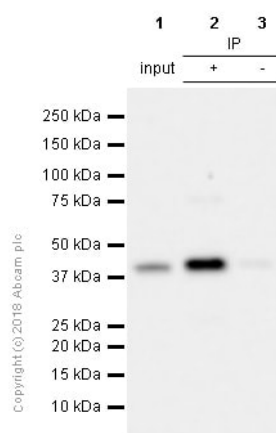
Secondary

Goat Anti-Rabbit IgG H&L (HRP) (**ab97051**) at 1/20000 dilution

Predicted band size: 36 kDa

Observed band size: 43 kDa

Western blot - Anti-c-Jun antibody [E254] - ChIP Grade (ab32137)



Immunoprecipitation - Anti-c-Jun antibody [E254] - ChIP Grade (ab32137)

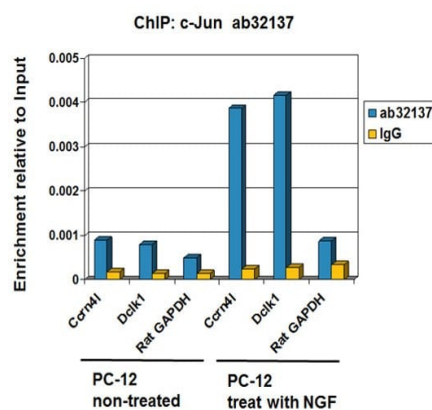
ab32137 (purified) at 1/60 dilution (20 µg/mL) immunoprecipitating c-Jun in HEK-293 whole cell lysate.

Lane 2 (+): HEK-293(Human embryonic kidney epithelial cell) whole cell lysate 10 µg

Lane 3 (-): ab32137 & HEK-293 whole cell lysate Rabbit monoclonal IgG (**ab172730**) instead of ab32137 in HEK-293 whole cell lysate

For western blotting, ab32137 at 1/500 dilution (2.29 µg/mL) and VeriBlot for IP Detection Reagent (HRP) (**ab131366**) was used for detection at 1/1000 dilution.

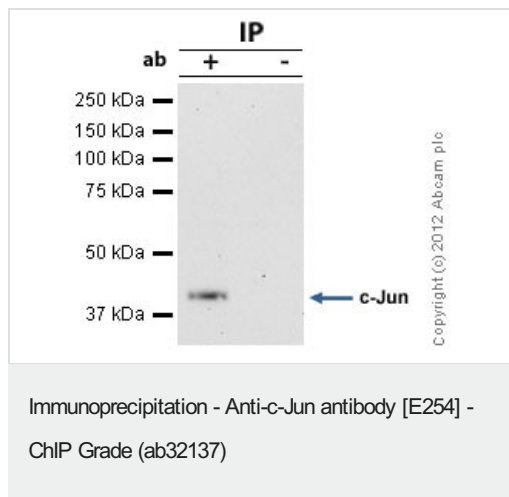
Blocking and diluting buffer: 5% NFDM /TBST .



Every new batch of this antibody is tested at Abcam in ChIP.

ChIP - Anti-c-Jun antibody [E254] - ChIP Grade (ab32137)

Chromatin was prepared from PC-12 (starve overnight) + NGF (50 ng/ml 2h) cells according to the Abcam X-ChIP protocol. Cells were fixed with 1% formaldehyde for 10 minutes. The ChIP was performed with 25µg of chromatin, 5µg of ab32137 (blue), and 20µl of protein A/G sepharose beads slurry (10µl of sepharose A beads + 10µl of sepharose G beads). 5µg of rabbit normal IgG was added to the beads control (yellow). The immunoprecipitated DNA was quantified by real time PCR (Sybr green approach).

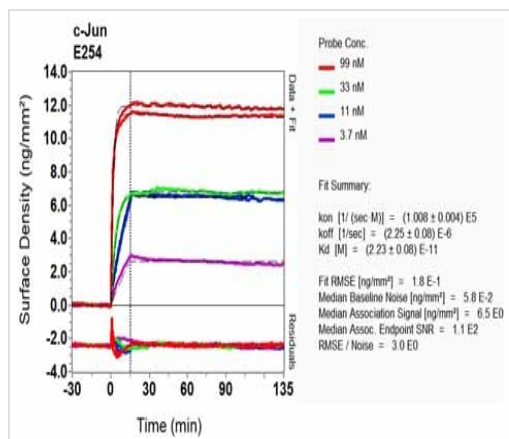


c-Jun was immunoprecipitated using 0.5mg NIH3T3 whole cell extract, 5µg of Rabbit polyclonal to c-Jun and 50µl of protein G magnetic beads (+). No antibody was added to the control (-). The antibody was incubated under agitation with Protein G beads for 10min, NIH3T3 whole cell extract lysate diluted in RIPA buffer was added to each sample and incubated for a further 10min under agitation.

Proteins were eluted by addition of 40µl SDS loading buffer and incubated for 10min at 70°C; 10µl of each sample was separated on a SDS PAGE gel, transferred to a nitrocellulose membrane, blocked with 5% BSA and probed with ab32137.

Secondary: Mouse monoclonal [SB62a] Secondary Antibody to Rabbit IgG light chain (HRP) ([ab99697](#)).

Band: 45kDa; c-Jun



Equilibrium disassociation constant (K_D)

Learn more about K_D

[Click here to learn more about \$K_D\$](#)

Why choose a recombinant antibody?

Research with confidence
Consistent and reproducible results

Long-term and scalable supply
Recombinant technology

Success from the first experiment
Confirmed specificity

Ethical standards compliant
Animal-free production

Anti-c-Jun antibody [E254] - ChIP Grade (ab32137)

Please note: All products are "FOR RESEARCH USE ONLY. NOT FOR USE IN DIAGNOSTIC PROCEDURES"

Our Abpromise to you: Quality guaranteed and expert technical support

- Replacement or refund for products not performing as stated on the datasheet
- Valid for 12 months from date of delivery
- Response to your inquiry within 24 hours

- We provide support in Chinese, English, French, German, Japanese and Spanish
- Extensive multi-media technical resources to help you
- We investigate all quality concerns to ensure our products perform to the highest standards

If the product does not perform as described on this datasheet, we will offer a refund or replacement. For full details of the Abpromise, please visit <https://www.abcam.co.jp/abpromise> or contact our technical team.

Terms and conditions

- Guarantee only valid for products bought direct from Abcam or one of our authorized distributors