


### Anti-c-Jun antibody ab31419

★★★★★ [13 Abreviews](#) [84 References](#) [画像数 4](#)

#### 製品の概要

製品名	Anti-c-Jun antibody
製品の詳細	Rabbit polyclonal to c-Jun
由来種	Rabbit
特異性	Antibody detects endogenous levels of c-Jun protein around Serine 243.
アプリケーション	<b>適用あり:</b> ELISA, ICC/IF, IP, ChIP, Flow Cyt, IHC-P, WB
種交差性	<b>交差種:</b> Mouse, Rat, Human, African green monkey <b>交差が予測される動物種:</b> Chicken, Cow, Pig 
免疫原	Synthetic peptide within Human c-Jun aa 210-259. The exact sequence is proprietary. Sequence: HLPQQMPVQHPRQLQALKEEPQTVPEMPGETPPLSPIDMESQE RIKAERKR

Database link: [P05412](#)

 [Run BLAST with](#)

 [Run BLAST with](#)

#### 特記事項

The Life Science industry has been in the grips of a reproducibility crisis for a number of years. Abcam is leading the way in addressing this with our range of recombinant monoclonal antibodies and knockout edited cell lines for gold-standard validation. Please check that this product meets your needs before purchasing.

If you have any questions, special requirements or concerns, please send us an inquiry and/or contact our Support team ahead of purchase. Recommended alternatives for this product can be found below, along with publications, customer reviews and Q&As

#### 製品の特性

製品の状態	Liquid
保存方法	Shipped at 4°C. Store at +4°C short term (1-2 weeks). Upon delivery aliquot. Store at -20°C. Avoid freeze / thaw cycle.
バッファー	pH: 7 Preservative: 0.02% Sodium azide Constituents: PBS, 50% Glycerol, 0.87% Sodium chloride

	Without Mg <sup>2+</sup> and Ca <sup>2+</sup>
精製度	Immunogen affinity purified
特記事項 (精製)	The antibody was affinity-purified from rabbit antiserum by affinity-chromatography using epitope-specific immunogen.
ポリモノ	ポリクローナル
アイソタイプ	IgG

アプリケーション

The Abpromise guarantee      Abpromise保証は、次のテスト済みアプリケーションにおけるab31419の使用に適用されます  
 アプリケーションノートには、推奨の開始希釈率がありますが、適切な希釈率につきましてはご確認ください。

アプリケーション	Abreviews	特記事項
ELISA		Use at an assay dependent concentration.
ICC/IF		Use a concentration of 1 µg/ml.
IP	★★★★★ (2)	Use at an assay dependent concentration.
ChIP	★★★★★ (1)	Use at an assay dependent concentration.
Flow Cyt	★★★★★ (1)	Use at an assay dependent concentration. <u>ab171870</u> - Rabbit polyclonal IgG, is suitable for use as an isotype control with this antibody.
IHC-P	★★★★★ (2)	1/50 - 1/100.
WB	★★★★★ (7)	1/500 - 1/1000. Predicted molecular weight: 36 kDa.

ターゲット情報

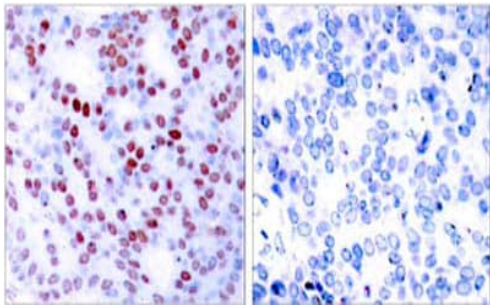
機能	Transcription factor that recognizes and binds to the enhancer heptamer motif 5'-TGA[CG]TCA-3'. Promotes activity of NR5A1 when phosphorylated by HIPK3 leading to increased steroidogenic gene expression upon cAMP signaling pathway stimulation. Involved in activated KRAS-mediated transcriptional activation of USP28 in colorectal cancer (CRC) cells (PubMed:24623306). Binds to the USP28 promoter in colorectal cancer (CRC) cells (PubMed:24623306).
配列類似性	Belongs to the bZIP family. Jun subfamily. Contains 1 bZIP (basic-leucine zipper) domain.
翻訳後修飾	Ubiquitinated by the SCF(FBXW7), leading to its degradation. Ubiquitination takes place following phosphorylation, that promotes interaction with FBXW7. Phosphorylated by CaMK4 and PRKDC; phosphorylation enhances the transcriptional activity. Phosphorylated by HIPK3. Phosphorylated by DYRK2 at Ser-243; this primes the protein for subsequent phosphorylation by GSK3B at Thr-239. Phosphorylated at Thr-239, Ser-243 and Ser-249 by GSK3B; phosphorylation reduces its ability to bind DNA. Phosphorylated by PAK2 at Thr-2, Thr-8, Thr-89, Thr-93 and Thr-286 thereby promoting JUN-mediated cell proliferation and transformation. Phosphorylated by PLK3 following hypoxia or UV irradiation, leading to increase DNA-binding activity.

Acetylated at Lys-271 by EP300.

細胞内局在

Nucleus.

画像

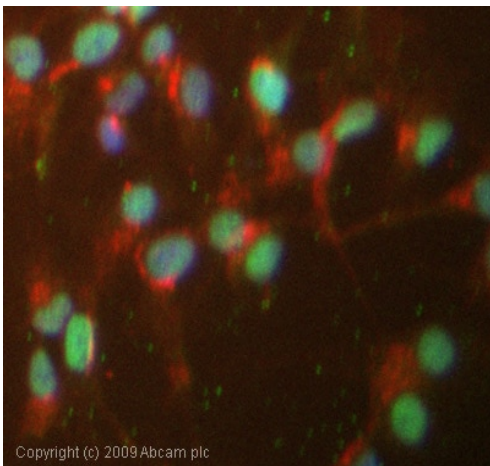


Immunohistochemistry (Formalin/PFA-fixed paraffin-embedded sections) - Anti-c-Jun antibody (ab31419)

Paraffin-embedded human breast carcinoma tissue stained for c-Jun with ab31419 at a 1/50 dilution in immunohistochemical analysis.

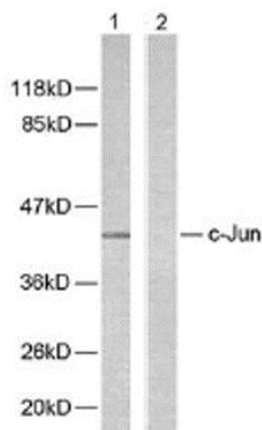
**Left panel:** Untreated.

**Right panel:** Pre-incubated with synthesized peptide.



Immunocytochemistry/ Immunofluorescence - Anti-c-Jun antibody (ab31419)

ICC/IF image of HepG2 (Human liver hepatocellular carcinoma cell line) cells labeling c-Jun (green) with ab31419 at 1 µg/ml. The cells were fixed in 4% PFA (10 minutes) and then incubated in 1% BSA / 10% normal goat serum / 0.3M glycine in 0.1% PBS-Tween for 1 hour to permeabilize the cells and block non-specific protein-protein interactions. The cells were then incubated with ab31419 at 1 µg/ml overnight at +4 °C. The secondary antibody (green) was Alexa Fluor® 488 goat anti-rabbit IgG (H+L) [ab150077](#) used at a 1/1000 dilution for 1 hour. Alexa Fluor® 594 WGA was used to label plasma membranes (red) at a 1/200 dilution for 1 hour. DAPI was used to stain the cell nuclei (blue) at a concentration of 1.43 µM.



Western blot - Anti-c-Jun antibody (ab31419)

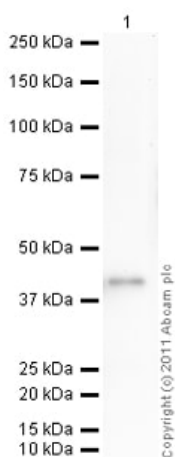
**All lanes :** Anti-c-Jun antibody (ab31419) at 1/500 dilution

**Lane 1 :** Extracts of HeLa (Human epithelial cell line from cervix adenocarcinoma) cells

**Lane 2 :** Extracts of HeLa (Human epithelial cell line from cervix adenocarcinoma) cells with immunizing peptide

**Predicted band size:** 36 kDa

**Observed band size:** 43 kDa



Western blot - Anti-c-Jun antibody (ab31419)

Anti-c-Jun antibody (ab31419) at 1/500 dilution + Recombinant Human c-Jun protein ([ab54318](#)) at 0.01 µg

### Secondary

Goat Anti-Rabbit IgG H&L (HRP) preadsorbed ([ab97080](#)) at 1/5000 dilution

Developed using the ECL technique.

Performed under reducing conditions.

**Predicted band size:** 36 kDa

**Exposure time:** 30 seconds

**Please note:** All products are "FOR RESEARCH USE ONLY. NOT FOR USE IN DIAGNOSTIC PROCEDURES"

### Our Abpromise to you: Quality guaranteed and expert technical support

- Replacement or refund for products not performing as stated on the datasheet
- Valid for 12 months from date of delivery
- Response to your inquiry within 24 hours
- We provide support in Chinese, English, French, German, Japanese and Spanish
- Extensive multi-media technical resources to help you
- We investigate all quality concerns to ensure our products perform to the highest standards

If the product does not perform as described on this datasheet, we will offer a refund or replacement. For full details of the Abpromise, please visit <https://www.abcam.co.jp/abpromise> or contact our technical team.

## Terms and conditions

---

- Guarantee only valid for products bought direct from Abcam or one of our authorized distributors