


# Anti-BTK (phospho Y223) antibody ab101233

**1** [References](#) **2** [画像数](#)

### 製品の概要

製品名	Anti-BTK (phospho Y223) antibody
製品の詳細	Rabbit polyclonal to BTK (phospho Y223)
由来種	Rabbit
特異性	From Jan 2024, QC testing of replenishment batches of this polyclonal changed. All tested and expected application and reactive species combinations are still covered by our Abcam product promise. However, we no longer test all applications. For more information on a specific batch, please contact our Scientific Support who will be happy to help. You may also be interested in our alternative recombinant antibody, <a href="#">ab68217</a> .
アプリケーション	<b>適用あり:</b> WB, ELISA
種交差性	<b>交差種:</b> Human <b>交差が予測される動物種:</b> Mouse, Rat, Rabbit, Horse, Cow, Cat, Dog, Pig, Chimpanzee, Macaque monkey, Orangutan 
免疫原	Synthetic peptide corresponding to Human BTK aa 200-300 (phospho Y223) conjugated to keyhole limpet haemocyanin.
ポジティブ・コントロール	This antibody gave a positive signal in Serum starved HeLa whole cell lysate
特記事項	<p>The Life Science industry has been in the grips of a reproducibility crisis for a number of years. Abcam is leading the way in addressing this with our range of recombinant monoclonal antibodies and knockout edited cell lines for gold-standard validation. Please check that this product meets your needs before purchasing.</p> <p>If you have any questions, special requirements or concerns, please send us an inquiry and/or contact our Support team ahead of purchase. Recommended alternatives for this product can be found below, along with publications, customer reviews and Q&amp;As</p>

### 製品の特性

製品の状態	Liquid
保存方法	Shipped at 4°C. Store at +4°C short term (1-2 weeks). Upon delivery aliquot. Store at -20°C or -80°C. Avoid freeze / thaw cycle.
バッファー	pH: 7.40 Preservative: 0.02% Sodium azide Constituent: PBS

Batches of this product that have a concentration < 1mg/ml may have BSA added as a stabilising agent. If you would like information about the formulation of a specific lot, please contact our scientific support team who will be happy to help.

精製度	Immunogen affinity purified
ポリ/モノ	ポリクローナル
アイソタイプ	IgG

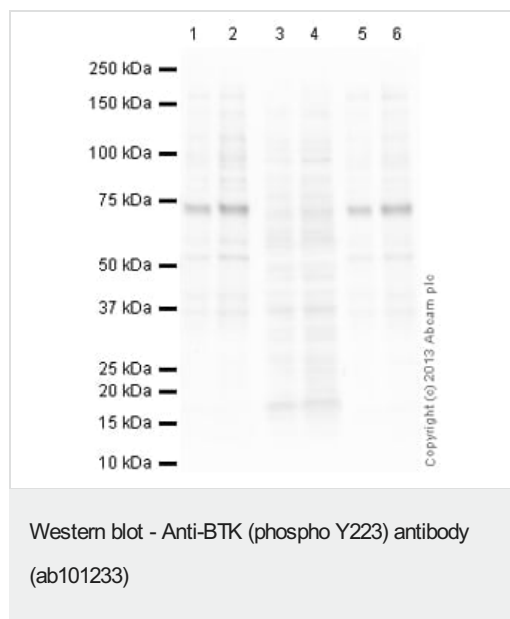
## アプリケーション

**The Abpromise guarantee**      **Abpromise保証は、次のテスト済みアプリケーションにおけるab101233の使用に適用されます**  
アプリケーションノートには、推奨の開始希釈率がありますが、適切な希釈率につきましてはご検討ください。

アプリケーション	Abreviews	特記事項
WB		Use a concentration of 1 µg/ml. Detects a band of approximately 74 kDa (predicted molecular weight: 76 kDa).
ELISA		Use a concentration of 1 µg/ml.

## ターゲット情報

機能	Plays a crucial role in B-cell ontogeny. Transiently phosphorylates GTF2I on tyrosine residues in response to B-cell receptor cross-linking. Required for the formation of functional ARID3A DNA-binding complexes.
関連疾患	Defects in BTK are the cause of X-linked agammaglobulinemia (XLA) [MIM:300755]; also known as X-linked agammaglobulinemia type 1 (AGMX1) or immunodeficiency type 1 (IMD1). XLA is a humoral immunodeficiency disease which results in developmental defects in the maturation pathway of B-cells. Affected boys have normal levels of pre-B-cells in their bone marrow but virtually no circulating mature B-lymphocytes. This results in a lack of immunoglobulins of all classes and leads to recurrent bacterial infections like otitis, conjunctivitis, dermatitis, sinusitis in the first few years of life, or even some patients present overwhelming sepsis or meningitis, resulting in death in a few hours. Treatment in most cases is by infusion of intravenous immunoglobulin. Defects in BTK may be the cause of X-linked hypogammaglobulinemia and isolated growth hormone deficiency (XLA-IGHD) [MIM:307200]; also known as agammaglobulinemia and isolated growth hormone deficiency or Fleisher syndrome or isolated growth hormone deficiency type 3 (IGHD3). In rare cases XLA is inherited together with isolated growth hormone deficiency (IGHD).
配列類似性	Belongs to the protein kinase superfamily. Tyr protein kinase family. TEC subfamily. Contains 1 Btk-type zinc finger. Contains 1 PH domain. Contains 1 protein kinase domain. Contains 1 SH2 domain. Contains 1 SH3 domain.
翻訳後修飾	Autophosphorylated on Tyr-223 and Tyr-551. Phosphorylation of Tyr-223 may create a docking site for a SH2 containing protein.
細胞内局在	Cytoplasm. Membrane. Nucleus.



**All lanes :** Anti-BTK (phospho Y223) antibody (ab101233) at 1 µg/ml

**Lane 1 :** Hela (Human epithelial carcinoma cell line) Serum starved Whole Cell Lysate at 10 µg

**Lane 2 :** Hela (Human epithelial carcinoma cell line) Serum starved Whole Cell Lysate at 25 µg

**Lane 3 :** Hela (Human epithelial carcinoma cell line) Serum starved Whole Cell Lysate at 10 µg with Immunising peptide at 1 µg/ml

**Lane 4 :** Hela (Human epithelial carcinoma cell line) Serum starved Whole Cell Lysate at 25 µg with Immunising peptide at 1 µg/ml

**Lane 5 :** Hela (Human epithelial carcinoma cell line) Serum starved Whole Cell Lysate at 10 µg with Non modified peptide at 1 µg/ml

**Lane 6 :** Hela (Human epithelial carcinoma cell line) Serum starved Whole Cell Lysate at 25 µg with Non modified peptide at 1 µg/ml

### Secondary

**All lanes :** Goat Anti-Rabbit IgG H&L (HRP) ([ab97051](#)) at 1/10000 dilution

Developed using the ECL technique.

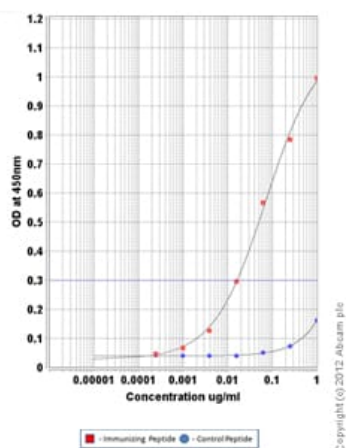
Performed under reducing conditions.

**Predicted band size:** 76 kDa

**Observed band size:** 75 kDa

**Exposure time:** 3 minutes

This blot was produced using a 10% Bis-tris gel under the MOPS buffer system. The gel was run at 200V for 50 minutes before being transferred onto a Nitrocellulose membrane at 30V for 70 minutes. The membrane was then blocked for an hour using 5% Bovine Serum Albumin before being incubated with ab101233 overnight at 4°C. Antibody binding was detected using an anti-rabbit antibody conjugated to HRP, and visualised using ECL development solution.



ELISA - Anti-BTK (phospho Y223) antibody  
(ab101233)

ab101233 was tested using an Indirect ELISA approach. The wells were coated with peptide (1 µg/ml at 100 µl/well) overnight at 4°C, followed by a 5% BSA blocking step for 1 hour at room temperature. The primary Ab was then added at a dilution range of 1- 0.00025 µg/ml (100 µl/well) for 1 hr at room temperature. A HRP-conjugated anti-rabbit IgG (heavy and light chain) was used as a secondary antibody at 1:20,000 dilution for 1 hr at room temperature.

**Please note:** All products are "FOR RESEARCH USE ONLY. NOT FOR USE IN DIAGNOSTIC PROCEDURES"

### Our Abpromise to you: Quality guaranteed and expert technical support

- Replacement or refund for products not performing as stated on the datasheet
- Valid for 12 months from date of delivery
- Response to your inquiry within 24 hours
- We provide support in Chinese, English, French, German, Japanese and Spanish
- Extensive multi-media technical resources to help you
- We investigate all quality concerns to ensure our products perform to the highest standards

If the product does not perform as described on this datasheet, we will offer a refund or replacement. For full details of the Abpromise, please visit <https://www.abcam.co.jp/abpromise> or contact our technical team.

### Terms and conditions

- Guarantee only valid for products bought direct from Abcam or one of our authorized distributors