




Anti-BNIP3L/NIX antibody ab8399

★★★★☆ [3 Abreviews](#) [28 References](#) [画像数 3](#)

製品の概要

製品名	Anti-BNIP3L/NIX antibody
製品の詳細	Rabbit polyclonal to BNIP3L/NIX
由来種	Rabbit
アプリケーション	適用あり: WB, ICC/IF, IHC-P
種交差性	交差種: Human 交差が予測される動物種: Mouse, Rat 
免疫原	Synthetic peptide corresponding to Human BNIP3L/NIX aa 77-92. Sequence: DAQHESGQSSSRGSSH Database link: O60238 (Peptide available as ab8431) <div style="display: flex; justify-content: space-around; margin-top: 10px;">  Run BLAST with  Run BLAST with </div>
ポジティブ・コントロール	K562 cell lysate can be used as positive control and the approximate 40kDa top band represents monomer of Bnip3L/NIX (4).
特記事項	<p>Members in the Bcl-2 family are critical regulators of apoptosis by either inhibiting or promoting cell death. Bcl-2 homology 3 (BH3) domain is a potent death domain. BH3 domain containing pro-apoptotic proteins, including Bad, Bax, Bid, Bik, Hrk, Nip3, and Bim, form a growing subclass of the Bcl-2 family. A novel BH3 domain containing protein was recently identified and designated Bnip3L/NIX, Bnip3a, and Nix (for Nip3-like protein X) (Matsushima, M. et al.; Yasuda, M. et al.; Chen, G, et al.). Bnip3L/Bnip3a/Nix is a homolog of the E1B 19K/Bcl-2 binding and pro-apoptotic protein Bnip3. Over expression of Bnip3L/NIX induces apoptosis (Yasuda, M. et al.; Chen, G, et al.). Bnip3L/NIX interacts with and overcomes suppresses by Bcl-2 and Bcl-xL. Bnip3L/NIX is localized in mitochondria. The messenger RNA of Bnip3L/NIX is ubiquitously expressed in human tissues (Matsushima, M. et al.; Yasuda, M. et al.). Bnip3L/NIX and Bnip3 form a new subfamily of the pro-apoptotic mitochondrial proteins.</p> <p>The Life Science industry has been in the grips of a reproducibility crisis for a number of years. Abcam is leading the way in addressing this with our range of recombinant monoclonal antibodies and knockout edited cell lines for gold-standard validation. Please check that this product meets your needs before purchasing.</p> <p>If you have any questions, special requirements or concerns, please send us an inquiry and/or contact our Support team ahead of purchase. Recommended alternatives for this product can be found below, along with publications, customer reviews and Q&As</p>

製品の特性

製品の状態	Liquid
保存方法	Shipped at 4°C. Store at +4°C.
バッファー	pH: 7.2 Preservative: 0.02% Sodium azide
精製度	Affinity purified
一次抗体 備考	Members in the Bcl-2 family are critical regulators of apoptosis by either inhibiting or promoting cell death. Bcl-2 homology 3 (BH3) domain is a potent death domain. BH3 domain containing pro-apoptotic proteins, including Bad, Bax, Bid, Bik, Hrk, Nip3, and Bim, form a growing subclass of the Bcl-2 family. A novel BH3 domain containing protein was recently identified and designated Bnip3L, Bnip3a, and Nix (for Nip3-like protein X) (Matsushima, M. et al.; Yasuda, M. et al.; Chen, G, et al.). Bnip3L/Bnip3a/Nix is a homolog of the E1B 19K/Bcl-2 binding and pro-apoptotic protein Bnip3. Over expression of Bnip3L induces apoptosis (Yasuda, M. et al.; Chen, G, et al.). Bnip3L interacts with and overcomes suppresses by Bcl-2 and Bcl-xL. Bnip3L is localized in mitochondria. The messenger RNA of Bnip3L is ubiquitously expressed in human tissues (Matsushima, M. et al.; Yasuda, M. et al.). Bnip3L and Bnip3 form a new subfamily of the pro-apoptotic mitochondrial proteins.
ポリモノ	ポリクローナル
アイソタイプ	IgG
軽鎖の種類	unknown

アプリケーション

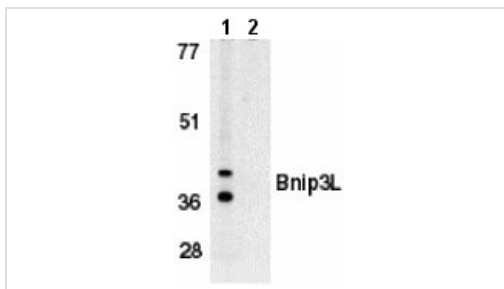
The Abpromise guarantee **Abpromise保証は、次のテスト済みアプリケーションにおけるab8399の使用に適用されます**
アプリケーションノートには、推奨の開始希釈率がありますが、適切な希釈率につきましてはご検討ください。

アプリケーション	Abreviews	特記事項
WB		Use a concentration of 0.5 - 1 µg/ml. Detects a band of approximately 40 kDa. To reduce possible background load less sample and or use more diluted antibody.
ICC/IF	★★★★☆ (1)	Use at an assay dependent concentration. See Abreview.
IHC-P		Use a concentration of 2 µg/ml.

ターゲット情報

機能	Induces apoptosis. Interacts with viral and cellular anti-apoptosis proteins. Can overcome the suppressors BCL-2 and BCL-XL, although high levels of BCL-XL expression will inhibit apoptosis. May function as a tumor suppressor. Inhibits apoptosis induced by BNIP3.
配列類似性	Belongs to the NIP3 family.
翻訳後修飾	Undergoes progressive proteolysis to an 11 kDa C-terminal fragment, which is blocked by the proteasome inhibitor lactacystin.

画像



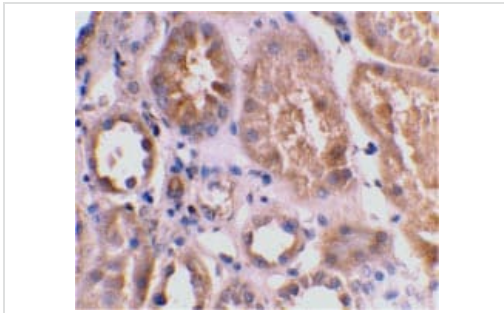
Western blot - Anti-BNIP3L/NIX antibody (ab8399)

All lanes : Anti-BNIP3L/NIX antibody (ab8399) at 1 µg/ml

Lane 1 : K562 whole cell lysate with absence of immunogenic peptide

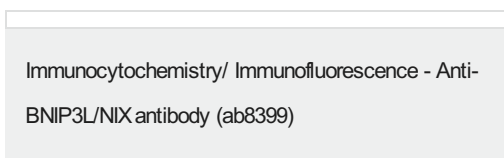
Lane 2 : K562 whole cell lysate with presence of immunogenic peptide

The approximate 40 kDa top band represents monomer of Bnip3L/NIX.



Immunohistochemistry (Formalin/PFA-fixed paraffin-embedded sections) - Anti-BNIP3L/NIX antibody (ab8399)

ab8399 at 2µg/ml staining BNIP3L/NIX in human kidney tissue by IHC



Immunocytochemistry/ Immunofluorescence - Anti-BNIP3L/NIX antibody (ab8399)

Immunofluorescence of Bnip3L/NIX in Human Kidney cells using ab8399 at 10 µg/ml.

Please note: All products are "FOR RESEARCH USE ONLY. NOT FOR USE IN DIAGNOSTIC PROCEDURES"

Our Abpromise to you: Quality guaranteed and expert technical support

- Replacement or refund for products not performing as stated on the datasheet
- Valid for 12 months from date of delivery
- Response to your inquiry within 24 hours
- We provide support in Chinese, English, French, German, Japanese and Spanish
- Extensive multi-media technical resources to help you
- We investigate all quality concerns to ensure our products perform to the highest standards

If the product does not perform as described on this datasheet, we will offer a refund or replacement. For full details of the Abpromise, please visit <https://www.abcam.co.jp/abpromise> or contact our technical team.

Terms and conditions

- Guarantee only valid for products bought direct from Abcam or one of our authorized distributors