

### Anti-BMP2 antibody [EPR20807] ab214821

リコンビナント **RabMAb**

**37 References**    **画像数 7**

#### 製品の概要

製品名	Anti-BMP2 antibody [EPR20807]
製品の詳細	Rabbit monoclonal [EPR20807] to BMP2
由来種	Rabbit
アプリケーション	<b>適用あり:</b> Flow Cyt (Intra), WB, ICC/IF
種交差性	<b>交差種:</b> Mouse, Rat, Human
免疫原	Recombinant fragment. This information is proprietary to Abcam and/or its suppliers.
ポジティブ・コントロール	WB: Caco-2, Saos-2, C2C12, RAW 264.7, C6 and LNCaP whole cell lysates; Mouse cartilage tissue lysate; Rat spleen tissue lysate; Human lung cancer and fetal kidney tissue lysates. ICC/IF: LNCaP and RAW 264.7 cells. Flow Cyt (intra): RAW 264.7 cells.
特記事項	<p>This product is a recombinant monoclonal antibody, which offers several advantages including:</p> <ul style="list-style-type: none"> <li>- High batch-to-batch consistency and reproducibility</li> <li>- Improved sensitivity and specificity</li> <li>- Long-term security of supply</li> <li>- Animal-free production</li> </ul> <p>For more information <a href="#">see here</a>.</p> <p>Our RabMAb<sup>®</sup> technology is a patented hybridoma-based technology for making rabbit monoclonal antibodies. For details on our patents, please refer to <a href="#">RabMAb<sup>®</sup> patents</a>.</p>

#### 製品の特性

製品の状態	Liquid
保存方法	Shipped at 4°C. Store at +4°C short term (1-2 weeks). Upon delivery aliquot. Store at -20°C long term. Avoid freeze / thaw cycle.
バッファー	<p>pH: 7.2</p> <p>Preservative: 0.01% Sodium azide</p> <p>Constituents: 0.05% BSA, 40% Glycerol (glycerin, glycerine), PBS</p>
精製度	Protein A purified
ポリ/モノ	モノクローナル
クローン名	EPR20807

アプリケーション

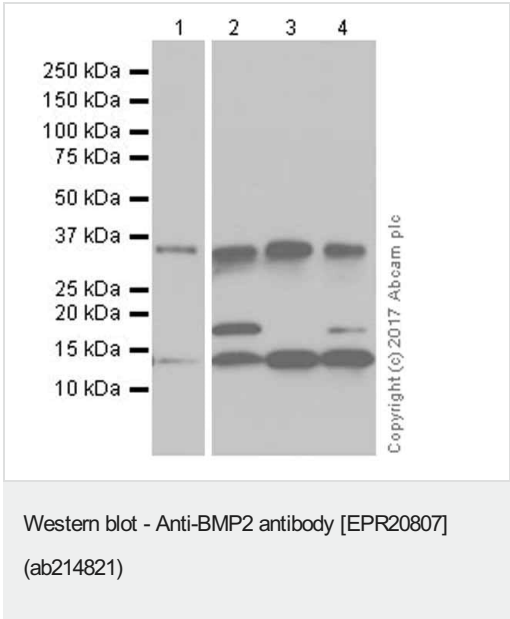
The Abpromise guarantee      **Abpromise保証は、** 次のテスト済みアプリケーションにおけるab214821の使用に適用されます  
アプリケーションノートには、推奨の開始希釈率がありますが、適切な希釈率につきましてはご検討ください。

アプリケーション	Abreviews	特記事項
Flow Cyt (Intra)		1/700.
WB		1/1000. Detects a band of approximately 14,18,30 kDa (predicted molecular weight: 44 kDa).
ICC/IF		1/100.

ターゲット情報

機能	Induces cartilage and bone formation.
組織特異性	Particularly abundant in lung, spleen and colon and in low but significant levels in heart, brain, placenta, liver, skeletal muscle, kidney, pancreas, prostate, ovary and small intestine.
配列類似性	Belongs to the TGF-beta family.
細胞内局在	Secreted.

画像



**All lanes :** Anti-BMP2 antibody [EPR20807] (ab214821) at 1/1000 dilution

**Lane 1 :** Caco-2 (human colorectal adenocarcinoma cell line) whole cell lysate

**Lane 2 :** Saos-2 (human osteosarcoma cell line) whole cell lysate

**Lane 3 :** C2C12 (mouse myoblast cell line) whole cell lysate

**Lane 4 :** RAW264.7 (mouse macrophage cell line transformed with Abelson murine leukemia virus) whole cell lysate

Lysates/proteins at 10 µg per lane.

Secondary

**All lanes :** Goat Anti-Rabbit IgG H&L (HRP) (**ab97051**) at 1/20000 dilution (Goat Anti-Rabbit IgG H&L (HRP))

Developed using the ECL technique.

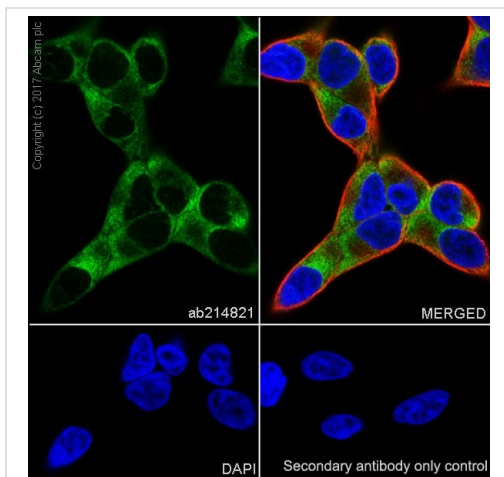
**Predicted band size:** 44 kDa

**Observed band size:** 14,18,30 kDa

Blocking and dilution buffer: 5% NFDM/TBST.

Exposure times: Lane 1: 3 minutes; Lanes 2-4: 15 seconds.

The molecular weight observed is consistent with literature. Bands observed at 14KD are monomers (PMID: 12819188, PMID: 3200834). Bands observed at 18KD are glycosylated monomers (PMID: 12819188, PMID: 8117284, PMID: 16261447, PMID: 3200834). Bands observed at ~30KD are dimers or glycosylated dimers (PMID: 22508088, PMID: 16261447, PMID: 3200834).

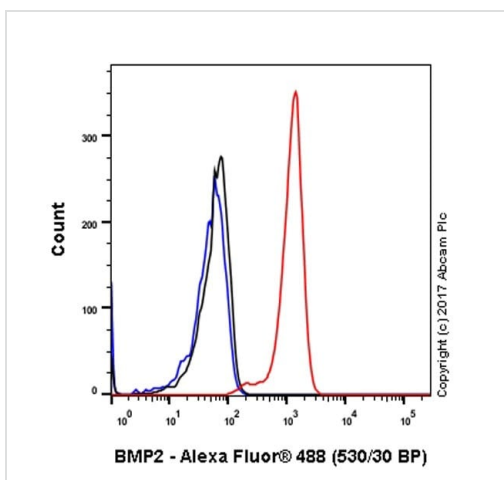


Immunocytochemistry/ Immunofluorescence - Anti-BMP2 antibody [EPR20807] (ab214821)

Immunofluorescent analysis of 4% paraformaldehyde-fixed, 0.1% Triton X-100 permeabilized LNCaP (human prostate cancer cell line) cells labeling BMP2 with ab214821 at 1/100 dilution, followed by Goat Anti-Rabbit IgG H&L (Alexa Fluor® 488) ([ab150077](#)) secondary antibody at 1/1000 dilution (green). Confocal image showing cytoplasmic staining on LNCaP cell line.

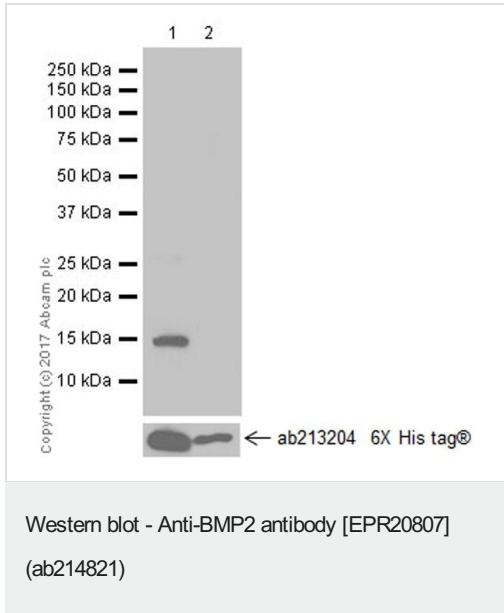
The nuclear counter stain is DAPI (blue). Tubulin is detected with Anti-alpha Tubulin antibody [DM1A] - Microtubule Marker (Alexa Fluor® 594) ([ab195889](#)) (red) at 1/200 dilution.

Secondary antibody only control: Used PBS instead of primary antibody, secondary antibody is Goat Anti-Rabbit IgG H&L (Alexa Fluor® 488) ([ab150077](#)) secondary antibody at 1/1000 dilution.



Flow Cytometry (Intracellular) - Anti-BMP2 antibody [EPR20807] (ab214821)

Intracellular flow cytometric analysis of 4% paraformaldehyde-fixed, 90% methanol-permeabilized RAW 264.7 (mouse macrophage cell line transformed with Abelson murine leukemia virus) cell line labeling BMP2 with ab214821 at 1/700 dilution (red) compared with an Isotype control Rabbit IgG, monoclonal [EPR25A] - Isotype Control ([ab172730](#)) (black) and an unlabelled control (cells without incubation with primary antibody and secondary antibody) (blue). Goat Anti-Rabbit IgG H&L (Alexa Fluor® 488) ([ab150077](#)), at 1/2000 dilution was used as the secondary antibody.



**All lanes :** Anti-BMP2 antibody [EPR20807] (ab214821) at 1/1000 dilution

**Lane 1 :** His-tagged human BMP2 (aa283-395) recombinant protein

**Lane 2 :** His-tagged human BMP4 (aa293-408) recombinant protein

Lysates/proteins at 0.02 µg per lane.

### Secondary

**All lanes :** Goat Anti-Rabbit IgG H&L (HRP) ([ab97051](#)) at 1/100000 dilution (Goat Anti-Rabbit IgG H&L (HRP))

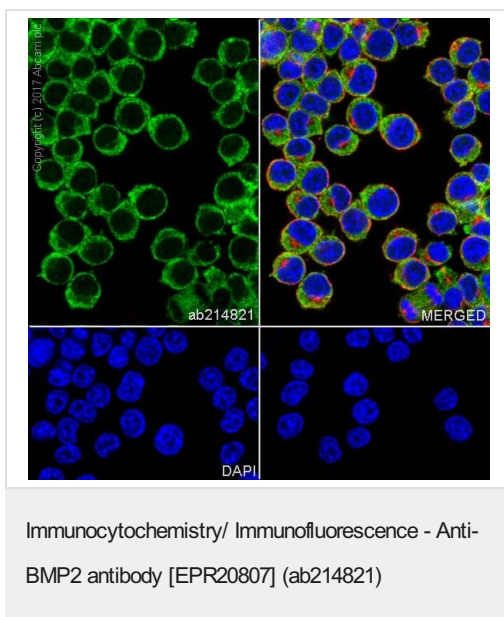
Developed using the ECL technique.

**Predicted band size:** 44 kDa

**Observed band size:** 15 kDa

**Exposure time:** 1 second

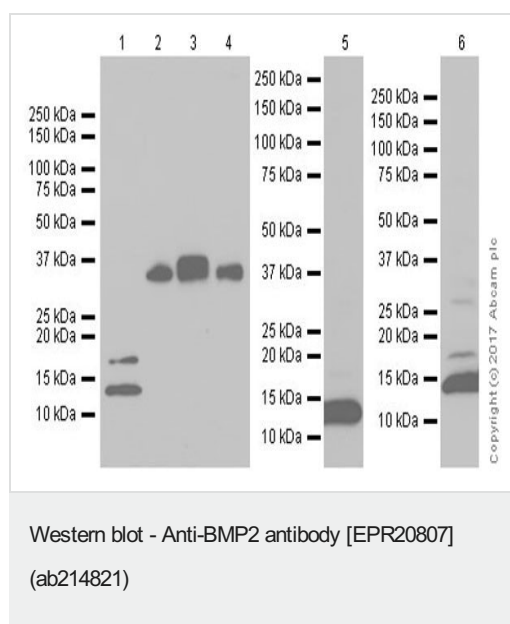
Blocking and dilution buffer: 5% NFDM/TBST



Immunofluorescent analysis of 4% paraformaldehyde-fixed, 0.1% Triton X-100 permeabilized RAW 264.7 (mouse macrophage cell line transformed with Abelson murine leukemia virus) cells labeling BMP2 with ab214821 at 1/100 dilution, followed by Goat Anti-Rabbit IgG H&L (Alexa Fluor® 488) ([ab150077](#)) secondary antibody at 1/1000 dilution (green). Confocal image showing cytoplasmic staining on RAW 264.7 cell line.

The nuclear counter stain is DAPI (blue). Tubulin is detected with Anti-alpha Tubulin antibody [DM1A] - Microtubule Marker (Alexa Fluor® 594) ([ab195889](#)) (red) at 1/200 dilution.

Secondary antibody only control: Used PBS instead of primary antibody, secondary antibody is Goat Anti-Rabbit IgG H&L (Alexa Fluor® 488) ([ab150077](#)) secondary antibody at 1/1000 dilution.



**All lanes :** Anti-BMP2 antibody [EPR20807] (ab214821) at 1/1000 dilution

**Lane 1 :** LNCaP (human prostate cancer cell line) whole cell lysate at 20 µg

**Lane 2 :** Mouse cartilage tissue lysate at 20 µg

**Lane 3 :** Human lung cancer tissue lysate at 20 µg

**Lane 4 :** Human fetal kidney tissue lysate at 20 µg

**Lane 5 :** Rat spleen tissue lysate at 10 µg

**Lane 6 :** C6 (rat glial tumor cell line) whole cell lysate at 10 µg

### Secondary

**All lanes :** Goat Anti-Rabbit IgG H&L (HRP) ([ab97051](#)) at 1/20000 dilution (Goat Anti-Rabbit IgG H&L (HRP))

Developed using the ECL technique.

**Predicted band size:** 44 kDa





**Observed band size:** 14,18,30 kDa

Blocking and dilution buffer: 5% NFDM/TBST.

Exposure times: Lanes 1-4: 3 minutes; Lane 5: 30 seconds; Lane 6: 5 seconds.

The molecular weight observed is consistent with literature. Bands observed at 14KD are monomers (PMID: 12819188, PMID: 3200834). Bands observed at 18KD are glycosylated monomers (PMID: 12819188, PMID: 8117284, PMID: 16261447, PMID: 3200834). Bands observed at ~30KD are dimers or glycosylated dimers (PMID: 22508088, PMID: 16261447, PMID: 3200834).

Why choose a recombinant antibody?

 <p><b>Research with confidence</b> Consistent and reproducible results</p>	 <p><b>Long-term and scalable supply</b> Recombinant technology</p>
 <p><b>Success from the first experiment</b> Confirmed specificity</p>	 <p><b>Ethical standards compliant</b> Animal-free production</p>

Anti-BMP2 antibody [EPR20807] (ab214821)

**Please note:** All products are "FOR RESEARCH USE ONLY. NOT FOR USE IN DIAGNOSTIC PROCEDURES"

### Our Abpromise to you: Quality guaranteed and expert technical support

- Replacement or refund for products not performing as stated on the datasheet
- Valid for 12 months from date of delivery
- Response to your inquiry within 24 hours
- We provide support in Chinese, English, French, German, Japanese and Spanish
- Extensive multi-media technical resources to help you
- We investigate all quality concerns to ensure our products perform to the highest standards

If the product does not perform as described on this datasheet, we will offer a refund or replacement. For full details of the Abpromise, please visit <https://www.abcam.co.jp/abpromise> or contact our technical team.

### Terms and conditions

- Guarantee only valid for products bought direct from Abcam or one of our authorized distributors