



Anti-BMP2 antibody ab14933

★★★★★ [14 Abreviews](#) [161 References](#) [画像数 1](#)

製品の概要

製品名	Anti-BMP2 antibody
製品の詳細	Rabbit polyclonal to BMP2
由来種	Rabbit
特異性	ab14933 detects only the pro-form of the BMP2
アプリケーション	適用あり: WB
種交差性	交差種: Human
免疫原	Synthetic peptide corresponding to Mouse BMP2 aa 45-60 (N terminal) conjugated to Keyhole Limpet Haemocyanin (KLH). Sequence: SEDVLSEFELRLLSMF Database link: P21274 (Peptide available as ab80798)
	 Run BLAST with  Run BLAST with
ポジティブ・コントロール	WB: HeLa, THP, HepG2 and Huh7 cells
特記事項	The Life Science industry has been in the grips of a reproducibility crisis for a number of years. Abcam is leading the way in addressing this with our range of recombinant monoclonal antibodies and knockout edited cell lines for gold-standard validation. Please check that this product meets your needs before purchasing. If you have any questions, special requirements or concerns, please send us an inquiry and/or contact our Support team ahead of purchase. Recommended alternatives for this product can be found below, along with publications, customer reviews and Q&As

製品の特性

製品の状態	Liquid
保存方法	Shipped at 4°C. Store at +4°C short term (1-2 weeks). Upon delivery aliquot. Store at -20°C or -80°C. Avoid freeze / thaw cycle.
バッファー	pH: 7.40 Preservative: 0.02% Sodium azide Constituents: 30% Glycerol, 0.75% BSA

The antibody is provided in antibody stabilization buffer containing phosphate buffer, pH 7.4, glycerol, stabilizing proteins and preservatives. The exact buffer contents are considered proprietary.

精製度	Immunogen affinity purified
ポリ/モノ	ポリクローナル
アイソタイプ	IgG

アプリケーション

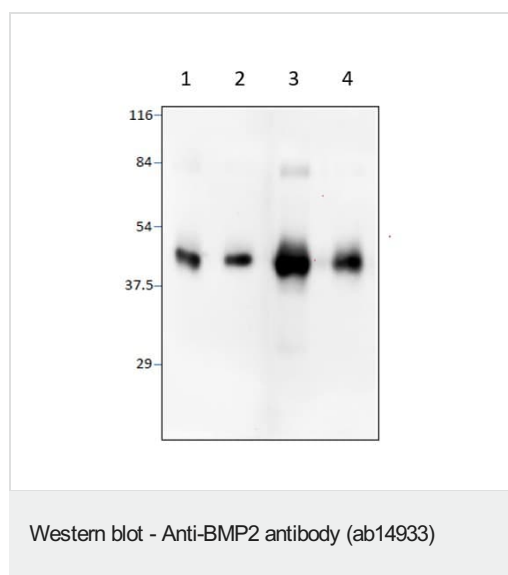
The Abpromise guarantee **Abpromise保証は、次のテスト済みアプリケーションにおけるab14933の使用に適用されます**
アプリケーションノートには、推奨の開始希釈率がありますが、適切な希釈率につきましてはご検討ください。

アプリケーション	Abreviews	特記事項
WB	★★★★★ (6)	1/500 - 1/1000. Detects a band of approximately 45 kDa.

ターゲット情報

機能	Induces cartilage and bone formation.
組織特異性	Particularly abundant in lung, spleen and colon and in low but significant levels in heart, brain, placenta, liver, skeletal muscle, kidney, pancreas, prostate, ovary and small intestine.
配列類似性	Belongs to the TGF-beta family.
細胞内局在	Secreted.

画像



All lanes : Anti-BMP2 antibody (ab14933) at 1/500 dilution

Lane 1 : HeLa cells

Lane 2 : THP cells

Lane 3 : HepG2 cells

Lane 4 : Huh7 cells

Cell extracts were made in protein extraction buffer (Solobuffer) with protease inhibitor cocktail.

Total 40-50ug of protein was applied in each lane on a 10% SDSPAGE,

The gel was transferred on to Immobilon F and blotted with ab14933.

Please note: All products are "FOR RESEARCH USE ONLY. NOT FOR USE IN DIAGNOSTIC PROCEDURES"

Our Abpromise to you: Quality guaranteed and expert technical support

- Replacement or refund for products not performing as stated on the datasheet
- Valid for 12 months from date of delivery
- Response to your inquiry within 24 hours

- We provide support in Chinese, English, French, German, Japanese and Spanish
- Extensive multi-media technical resources to help you
- We investigate all quality concerns to ensure our products perform to the highest standards

If the product does not perform as described on this datasheet, we will offer a refund or replacement. For full details of the Abpromise, please visit <https://www.abcam.co.jp/abpromise> or contact our technical team.

Terms and conditions

- Guarantee only valid for products bought direct from Abcam or one of our authorized distributors