

Anti-Blooms Syndrome Protein Blm (phospho T99) antibody ab62206

[1 Abreviews](#) [2 References](#) [画像数 3](#)

製品の概要

製品名	Anti-Blooms Syndrome Protein Blm (phospho T99) antibody
製品の詳細	Rabbit polyclonal to Blooms Syndrome Protein Blm (phospho T99)
由来種	Rabbit
特異性	ab62206 detects endogenous levels of Bloom Syndrome Protein Blm only when phosphorylated at threonine 99.
アプリケーション	適用あり: WB, IHC-P, ICC/IF
種交差性	交差種: Human
免疫原	Synthetic peptide corresponding to Human Blooms Syndrome Protein Blm aa 50-150 (phospho T99). Database link: P54132
ポジティブ・コントロール	HeLa,HepG2 cells
特記事項	<p>The Life Science industry has been in the grips of a reproducibility crisis for a number of years. Abcam is leading the way in addressing this with our range of recombinant monoclonal antibodies and knockout edited cell lines for gold-standard validation. Please check that this product meets your needs before purchasing.</p> <p>If you have any questions, special requirements or concerns, please send us an inquiry and/or contact our Support team ahead of purchase. Recommended alternatives for this product can be found below, along with publications, customer reviews and Q&As</p>

製品の特性

製品の状態	Liquid
保存方法	Shipped at 4°C. Store at -20°C. Stable for 12 months at -20°C.
バッファー	pH: 7.40 Preservative: 0.02% Sodium azide Constituents: PBS, 50% Glycerol (glycerin, glycerine), 0.87% Sodium chloride
精製度	Immunogen affinity purified
特記事項 (精製)	ab62206 was affinity-purified from rabbit antiserum by affinity-chromatography using epitope-specific phosphopeptide. The antibody against non-phosphopeptide was removed by

chromatography using non-phosphopeptide corresponding to the phosphorylation site.

ポリモノ

ポリクローナル

アイソタイプ

IgG

アプリケーション

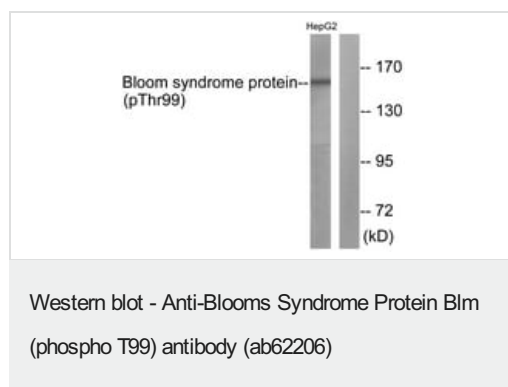
The Abpromise guarantee Abpromise保証は、 次のテスト済みアプリケーションにおけるab62206の使用に適用されます
アプリケーションノートには、推奨の開始希釈率がありますが、適切な希釈率につきましてはご検討ください。

アプリケーション	Abreviews	特記事項
WB		1/500 - 1/1000. Predicted molecular weight: 159 kDa.
IHC-P		1/50 - 1/100.
ICC/IF		1/100 - 1/500.

ターゲット情報

機能	Participates in DNA replication and repair. Exhibits a magnesium-dependent ATP-dependent DNA-helicase activity that unwinds single- and double-stranded DNA in a 3'-5' direction.
関連疾患	Defects in BLM are the cause of Bloom syndrome (BLM) [MIM:210900]. BLM is an autosomal recessive disorder characterized by proportionate pre- and postnatal growth deficiency, sun-sensitive telangiectatic hypo- and hyperpigmented skin, predisposition to malignancy, and chromosomal instability.
配列類似性	Belongs to the helicase family. RecQ subfamily. Contains 1 helicase ATP-binding domain. Contains 1 helicase C-terminal domain. Contains 1 HRDC domain.
翻訳後修飾	Phosphorylated in response to DNA damage. Phosphorylation requires the FANCA-FANCC-FANCE-FANCF-FANCG protein complex, as well as the presence of RMI1.
細胞内局在	Nucleus.

画像



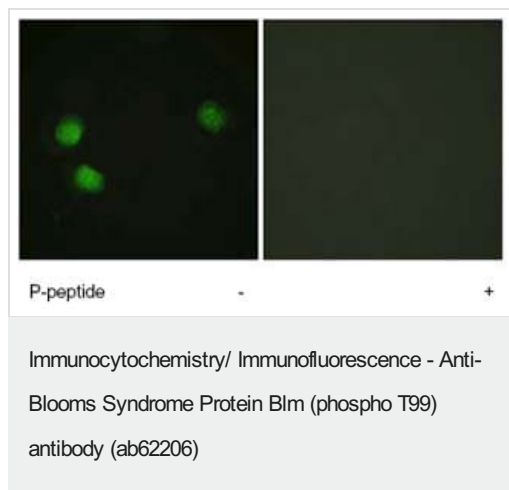
All lanes : Anti-Blooms Syndrome Protein Blm (phospho T99) antibody (ab62206)

Lane 1 : HepG2 cell lysate

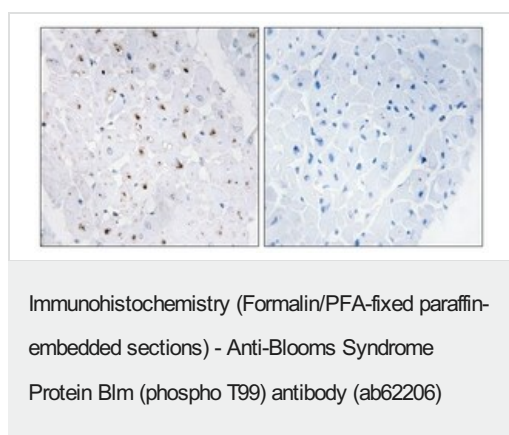
Lane 2 : HepG2 cell lysate with blocking peptide

Predicted band size: 159 kDa

Observed band size: 159 kDa



Immunofluorescence analysis of HeLa cells using Blooms Syndrome Protein Blm (phospho T99) antibody (ab62206) at 1/500 dilution, in the presence (right) or absence (left) of immunising phosphopeptide.



ab62206 staining Blooms Syndrome Protein Blm (phospho T99) in Human heart by Immunohistochemistry (Formalin/PFA-fixed paraffin-embedded sections). The picture on the right is treated with the synthesized peptide.

Please note: All products are "FOR RESEARCH USE ONLY. NOT FOR USE IN DIAGNOSTIC PROCEDURES"

Our Abpromise to you: Quality guaranteed and expert technical support

- Replacement or refund for products not performing as stated on the datasheet
- Valid for 12 months from date of delivery
- Response to your inquiry within 24 hours
- We provide support in Chinese, English, French, German, Japanese and Spanish
- Extensive multi-media technical resources to help you
- We investigate all quality concerns to ensure our products perform to the highest standards

If the product does not perform as described on this datasheet, we will offer a refund or replacement. For full details of the Abpromise, please visit <https://www.abcam.co.jp/abpromise> or contact our technical team.

Terms and conditions

- Guarantee only valid for products bought direct from Abcam or one of our authorized distributors