


Anti-Blooms Syndrome Protein Blm antibody ab476

★★★★★ **2 Abreviews** **34 References** 画像数 **2**

製品の概要

製品名	Anti-Blooms Syndrome Protein Blm antibody
製品の詳細	Rabbit polyclonal to Blooms Syndrome Protein Blm
由来種	Rabbit
アプリケーション	適用あり: WB, IP
種交差性	交差種: Human 交差が予測される動物種: Mammals 
免疫原	Fusion protein (His-tag) corresponding to Human Blooms Syndrome Protein Blm (C terminal). His-tagged 376 amino acid C-terminal of human blm fusion protein.
ポジティブ・コントロール	HeLa nuclear extract.
特記事項	<p>The Life Science industry has been in the grips of a reproducibility crisis for a number of years. Abcam is leading the way in addressing this with our range of recombinant monoclonal antibodies and knockout edited cell lines for gold-standard validation. Please check that this product meets your needs before purchasing.</p> <p>If you have any questions, special requirements or concerns, please send us an inquiry and/or contact our Support team ahead of purchase. Recommended alternatives for this product can be found below, along with publications, customer reviews and Q&As</p>

製品の特性

製品の状態	Liquid
保存方法	Shipped at 4°C. Store at +4°C short term (1-2 weeks). Upon delivery aliquot. Store at -20°C or -80°C. Avoid freeze / thaw cycle.
バッファー	Preservative: 0.05% Sodium azide
精製度	Whole antiserum
ポリ/モノ	ポリクローナル
アイソタイプ	IgG

アプリケーション

The Abpromise guarantee

Abpromise保証は、 次のテスト済みアプリケーションにおけるab476の使用に適用されます

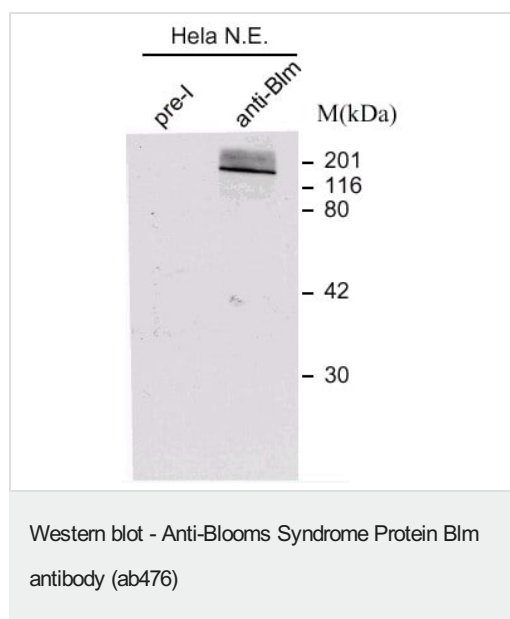
アプリケーションノートには、推奨の開始希釈率がありますが、適切な希釈率につきましてはご確認ください。

アプリケーション	Abreviews	特記事項
WB		1/2000. Detects a band of approximately 170 kDa (predicted molecular weight: 159 kDa). We have conflicting reports from customers about whether this antibody works in IF in HeLa or SK-N-SH cells. We would appreciate any customer feedback about this antibody.
IP		Use at an assay dependent concentration.

ターゲット情報

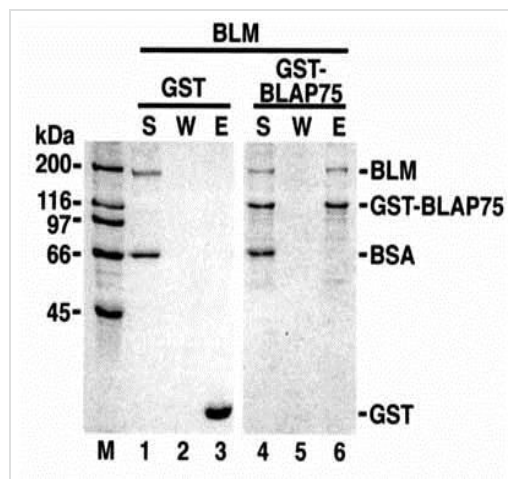
機能	Participates in DNA replication and repair. Exhibits a magnesium-dependent ATP-dependent DNA-helicase activity that unwinds single- and double-stranded DNA in a 3'-5' direction.
関連疾患	Defects in BLM are the cause of Bloom syndrome (BLM) [MIM:210900]. BLM is an autosomal recessive disorder characterized by proportionate pre- and postnatal growth deficiency, sun-sensitive telangiectatic hypo- and hyperpigmented skin, predisposition to malignancy, and chromosomal instability.
配列類似性	Belongs to the helicase family. RecQ subfamily. Contains 1 helicase ATP-binding domain. Contains 1 helicase C-terminal domain. Contains 1 HRDC domain.
翻訳後修飾	Phosphorylated in response to DNA damage. Phosphorylation requires the FANCA-FANCC-FANCE-FANCF-FANCG protein complex, as well as the presence of RMI1.
細胞内局在	Nucleus.

画像



Western blot using ab476 against HELA nuclear extract revealing the 160kD BLM protein which, in gels, moves as a 190kD band.

Western blot using ab476 against HELA nuclear extract revealing the 160kD BLM protein which, in gels, moves as a 190kD band.



Immunoprecipitation - Anti-Blooms Syndrome

Protein Blm antibody (ab476)

Image from S Raynard et al, J Biol Chem 281:13861-4 (2006), Fig 2.

BLAP75 physically interacts with BLM and Topo IIIa. Purified BLM was incubated with purified Topo IIIa and the reaction mixture was subjected to Immunoprecipitation with ab476. The reaction supernatant (S), wash (W), and eluate (E) were analyzed by SDS-PAGE, GST-BLAP75 or GST alone was incubated with BLM. Protein complexes were captured on glutathione-Sepharose beads, followed by SDS-PAGE.

Please note: All products are "FOR RESEARCH USE ONLY. NOT FOR USE IN DIAGNOSTIC PROCEDURES"

Our Abpromise to you: Quality guaranteed and expert technical support

- Replacement or refund for products not performing as stated on the datasheet
- Valid for 12 months from date of delivery
- Response to your inquiry within 24 hours
- We provide support in Chinese, English, French, German, Japanese and Spanish
- Extensive multi-media technical resources to help you
- We investigate all quality concerns to ensure our products perform to the highest standards

If the product does not perform as described on this datasheet, we will offer a refund or replacement. For full details of the Abpromise, please visit <https://www.abcam.co.jp/abpromise> or contact our technical team.

Terms and conditions

- Guarantee only valid for products bought direct from Abcam or one of our authorized distributors