

Anti-Blooms Syndrome Protein Blm antibody ab2179

★★★★★ **12 Abreviews** **45 References** 画像数 3

製品の概要

製品名	Anti-Blooms Syndrome Protein Blm antibody
製品の詳細	Rabbit polyclonal to Blooms Syndrome Protein Blm
由来種	Rabbit
アプリケーション	適用あり: WB, IP
種交差性	交差種: Mouse, Human
免疫原	Synthetic peptide. This information is proprietary to Abcam and/or its suppliers.
ポジティブ・コントロール	WB: HEK-293T, K-562, TCMK-1, NIH/3T3 and Jurkat whole cell lysate. IP: Blooms Syndrome Protein Blm in HEK-293T whole cell lysate.
特記事項	<p>The Life Science industry has been in the grips of a reproducibility crisis for a number of years. Abcam is leading the way in addressing this with our range of recombinant monoclonal antibodies and knockout edited cell lines for gold-standard validation. Please check that this product meets your needs before purchasing.</p> <p>If you have any questions, special requirements or concerns, please send us an inquiry and/or contact our Support team ahead of purchase. Recommended alternatives for this product can be found below, along with publications, customer reviews and Q&As</p>

製品の特性

製品の状態	Liquid
保存方法	Shipped at 4°C. Upon delivery aliquot and store at -20°C. Avoid freeze / thaw cycles.
バッファー	pH: 7 Preservative: 0.1% Sodium azide
精製度	Immunogen affinity purified
ポリ/モノ	ポリクローナル
アイソタイプ	IgG

アプリケーション

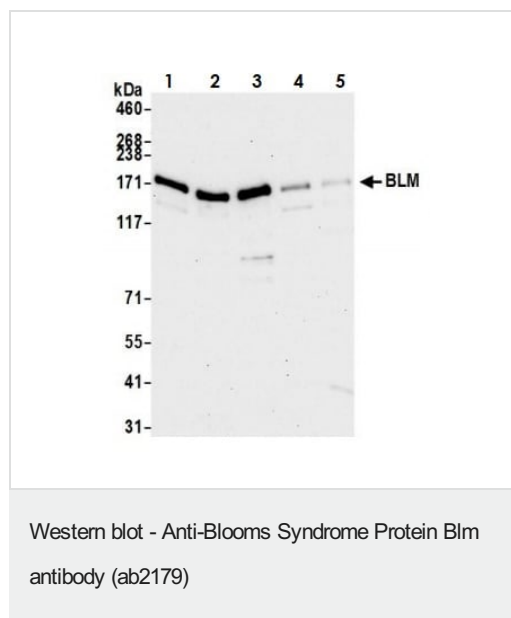
The Abpromise guarantee **Abpromise保証は、次のテスト済みアプリケーションにおけるab2179の使用に適用されます**
 アプリケーションノートには、推奨の開始希釈率がありますが、適切な希釈率につきましてはご検討ください。

アプリケーション	Abreviews	特記事項
WB	★★★★★ (6)	1/2000 - 1/10000. Detects a band of approximately 170 kDa (predicted molecular weight: 159 kDa).
IP	★★★★★ (1)	Use at 2-10 µg/mg of lysate.

ターゲット情報

機能	Participates in DNA replication and repair. Exhibits a magnesium-dependent ATP-dependent DNA-helicase activity that unwinds single- and double-stranded DNA in a 3'-5' direction.
関連疾患	Defects in BLM are the cause of Bloom syndrome (BLM) [MIM:210900]. BLM is an autosomal recessive disorder characterized by proportionate pre- and postnatal growth deficiency, sun-sensitive telangiectatic hypo- and hyperpigmented skin, predisposition to malignancy, and chromosomal instability.
配列類似性	Belongs to the helicase family. RecQ subfamily. Contains 1 helicase ATP-binding domain. Contains 1 helicase C-terminal domain. Contains 1 HRDC domain.
翻訳後修飾	Phosphorylated in response to DNA damage. Phosphorylation requires the FANCA-FANCC-FANCE-FANCF-FANCG protein complex, as well as the presence of RMI1.
細胞内局在	Nucleus.

画像



All lanes : Anti-Blooms Syndrome Protein Blm antibody (ab2179) at 0.1 µg/ml

Lane 1 : HEK-293T (Human epithelial cell line from embryonic kidney transformed with large T antigen) whole cell lysate

Lane 2 : K-562 (Human chronic myelogenous leukemia lymphoblast cell line) whole cell lysate

Lane 3 : Jurkat (Human T cell leukemia cell line from peripheral blood) whole cell lysate

Lane 4 : HeLa (Human epithelial cell line from cervix adenocarcinoma) whole cell lysate

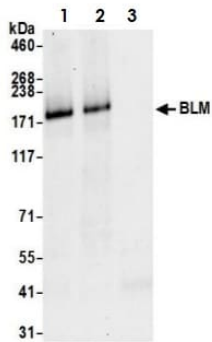
Lane 5 : A549 (Human lung carcinoma cell line) whole cell lysate

Lysates/proteins at 15 µg per lane.

Predicted band size: 159 kDa

Exposure time: 30 seconds

Lysates prepared using NETN lysis buffer.



Immunoprecipitation - Anti-Blooms Syndrome
Protein BLM antibody (ab2179)

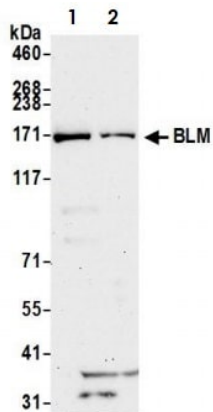
Samples: Whole cell lysate (1.0 mg per IP reaction; 20% of IP loaded) from HEK-293T cells prepared using NETN lysis buffer.

Antibodies: ab2179 used for IP at 6 µg per reaction.

Two lots tested (Lanes 1 and 2).

Lane 3 is Control IgG.

For blotting immunoprecipitated BLM, ab2179 was used at 0.1 µg/ml. Detection: Chemiluminescence with an exposure time of 10 seconds.



Western blot - Anti-Blooms Syndrome Protein BLM
antibody (ab2179)

All lanes : Anti-Blooms Syndrome Protein BLM antibody (ab2179) at 0.1 µg/ml

Lane 1 : TCMK-1 (Mouse kidney epithelial cell line) whole cell lysate

Lane 2 : NIH/3T3 (Mouse embryonic fibroblast cell line) whole cell lysate

Lysates/proteins at 50 µg per lane.

Predicted band size: 159 kDa

Exposure time: 75 seconds

Lysates prepared using NETN lysis buffer.

Please note: All products are "FOR RESEARCH USE ONLY. NOT FOR USE IN DIAGNOSTIC PROCEDURES"

Our Abpromise to you: Quality guaranteed and expert technical support

- Replacement or refund for products not performing as stated on the datasheet
- Valid for 12 months from date of delivery

- Response to your inquiry within 24 hours
- We provide support in Chinese, English, French, German, Japanese and Spanish
- Extensive multi-media technical resources to help you
- We investigate all quality concerns to ensure our products perform to the highest standards

If the product does not perform as described on this datasheet, we will offer a refund or replacement. For full details of the Abpromise, please visit <https://www.abcam.co.jp/abpromise> or contact our technical team.

Terms and conditions

- Guarantee only valid for products bought direct from Abcam or one of our authorized distributors