


Anti-BIRC6/APOLLON antibody ab19609

★★★★★ **1 Abreviews** **12 References** 画像数 3

製品の概要

製品名	Anti-BIRC6/APOLLON antibody
製品の詳細	Rabbit polyclonal to BIRC6/APOLLON
由来種	Rabbit
アプリケーション	適用あり: WB, IP, IHC-P
種交差性	交差種: Mouse, Human 交差が予測される動物種: Chimpanzee, Rhesus monkey, Orangutan 
免疫原	Synthetic peptide corresponding to BIRC6/APOLLON (C terminal). Database link: Q9NR09
特記事項	<p>The Life Science industry has been in the grips of a reproducibility crisis for a number of years. Abcam is leading the way in addressing this with our range of recombinant monoclonal antibodies and knockout edited cell lines for gold-standard validation. Please check that this product meets your needs before purchasing.</p> <p>If you have any questions, special requirements or concerns, please send us an inquiry and/or contact our Support team ahead of purchase. Recommended alternatives for this product can be found below, along with publications, customer reviews and Q&As</p>

製品の特性

製品の状態	Liquid
保存方法	Shipped at 4°C. Upon delivery aliquot and store at -20°C. Avoid freeze / thaw cycles.
バッファー	pH: 7 Preservative: 0.09% Sodium azide Constituents: 0.021% PBS, 1.764% Sodium citrate, 1.815% Tris
精製度	Immunogen affinity purified
ポリ/モノ	ポリクローナル
アイソタイプ	IgG

アプリケーション

The Abpromise guarantee

Abpromise保証は、 次のテスト済みアプリケーションにおけるab19609の使用に適用されます

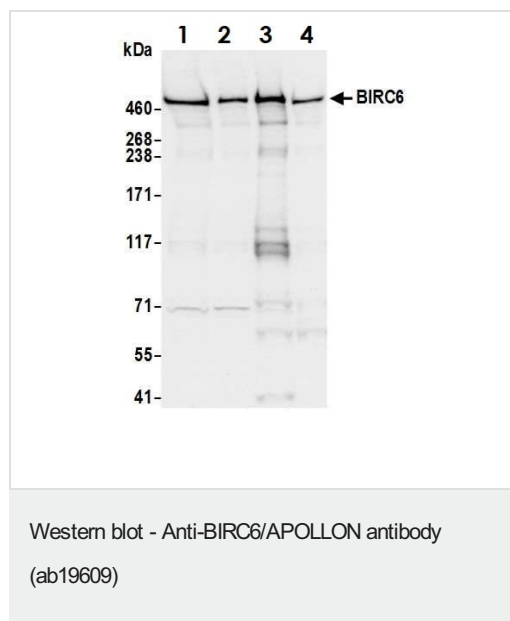
アプリケーションノートには、推奨の開始希釈率がありますが、適切な希釈率につきましてはご確認ください。

アプリケーション	Abreviews	特記事項
WB	★★★★★ (1)	1/5000 - 1/15000. Predicted molecular weight: 528 kDa.
IP		Use at 2-10 µg/mg of lysate.
IHC-P		1/2000 - 1/10000. Perform heat mediated antigen retrieval with citrate buffer pH 6 before commencing with IHC staining protocol.

ターゲット情報

機能	Protects cells from undergoing apoptosis.
組織特異性	Expressed in brain cancer cells.
配列類似性	In the C-terminal section; belongs to the ubiquitin-conjugating enzyme family. Contains 1 BIR repeat.
翻訳後修飾	Ubiquitinated. Ubiquitination is mediated by the RNF41 E3 ligase and leads to proteasomal degradation, impairing inhibition of apoptosis.

画像



All lanes : Anti-BIRC6/APOLLON antibody (ab19609) at 0.1 µg/ml

Lane 1 : HeLa whole cell lysate at 50 µg

Lane 2 : HeLa whole cell lysate at 15 µg

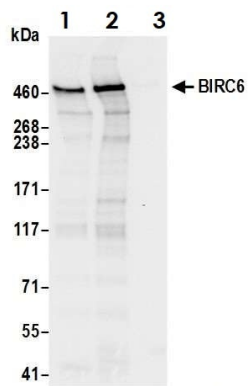
Lane 3 : HEK293T whole cell lysate at 50 µg

Lane 4 : NIH/3T3 whole cell lysate at 50 µg

Predicted band size: 528 kDa

Exposure time: 3 seconds

Western blot - Anti-BIRC6/APOLLON antibody
(ab19609)



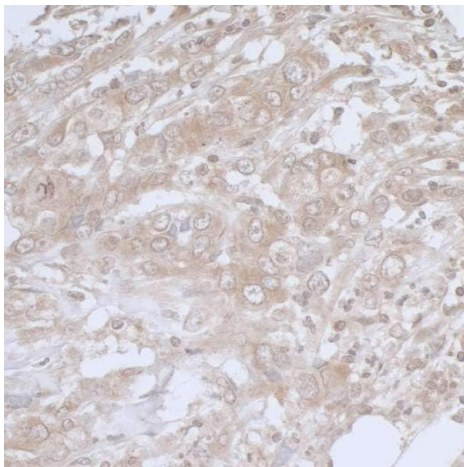
Immunoprecipitation of HeLa cells with ab19609

Lane 1: ab19609 current lot

Lane 2: ab19609 previous lot

Lane 3: control IgG

Immunoprecipitation - Anti-BIRC6/APOLLON
antibody (ab19609)



Immunohistochemistry analysis of formalin-fixed paraffin-embedded human breast carcinoma tissue staining BIRC6/Apollon with ab19609 at 0.2µg/ml

Immunohistochemistry (Formalin/PFA-fixed paraffin-embedded sections) - Anti-BIRC6/APOLLON
antibody (ab19609)

Please note: All products are "FOR RESEARCH USE ONLY. NOT FOR USE IN DIAGNOSTIC PROCEDURES"

Our Abpromise to you: Quality guaranteed and expert technical support

- Replacement or refund for products not performing as stated on the datasheet

- Valid for 12 months from date of delivery
- Response to your inquiry within 24 hours
- We provide support in Chinese, English, French, German, Japanese and Spanish
- Extensive multi-media technical resources to help you
- We investigate all quality concerns to ensure our products perform to the highest standards

If the product does not perform as described on this datasheet, we will offer a refund or replacement. For full details of the Abpromise, please visit <https://www.abcam.co.jp/abpromise> or contact our technical team.

Terms and conditions

- Guarantee only valid for products bought direct from Abcam or one of our authorized distributors