

Biotin Anti-Myc tag antibody ab34773

★★★★★ [3 Abreviews](#) [2 References](#) [画像数 1](#)

製品の概要

製品名	Biotin Anti-Myc tag antibody
製品の詳細	Biotin Rabbit polyclonal to Myc tag
由来種	Rabbit
標識	Biotin
特異性	This polyclonal anti-Myc-tag antibody detects overexpressed proteins containing the Myc epitope tag. The antibody recognizes the Myc-tag (Glu-Gln-Lys-Leu-Ile-Ser-Glu-Glu-Asp-Leu) fused to either the amino- or carboxytermini of targeted proteins in transfected or transformed cells.
アプリケーション	適用あり: ELISA, WB
免疫原	Synthetic peptide corresponding to Myc tag aa 410-419 conjugated to Keyhole Limpet Haemocyanin (KLH). Sequence: EQKLISEEDL

 [Run BLAST with](#)

 [Run BLAST with](#)

特記事項	<p>Biotinamidocaproate N-Hydroxysuccinimide Ester (BAC) Biotin/Protein Ratio: 10-20 BAC molecules per rabbit IgG molecule.</p> <p>The Life Science industry has been in the grips of a reproducibility crisis for a number of years. Abcam is leading the way in addressing this with our range of recombinant monoclonal antibodies and knockout edited cell lines for gold-standard validation. Please check that this product meets your needs before purchasing.</p> <p>If you have any questions, special requirements or concerns, please send us an inquiry and/or contact our Support team ahead of purchase. Recommended alternatives for this product can be found below, along with publications, customer reviews and Q&As</p>
------	--

製品の特性

製品の状態	Liquid
保存方法	Shipped at 4°C. Store at +4°C short term (1-2 weeks). Store at -20°C or -80°C. Avoid freeze / thaw cycle.
バッファー	<p>pH: 6.50</p> <p>Preservative: 0.01% Sodium azide</p> <p>Constituents: 1% BSA, 0.42% Tripotassium orthophosphate, 0.87% Sodium chloride</p>

精製度	Immunogen affinity purified
ポリ/モノ	ポリクローナル
アイソタイプ	IgG

アプリケーション

The Abpromise guarantee **Abpromise保証は、次のテスト済みアプリケーションにおけるab34773の使用に適用されます**
 アプリケーションノートには、推奨の開始希釈率がありますが、適切な希釈率につきましてはご検討ください。

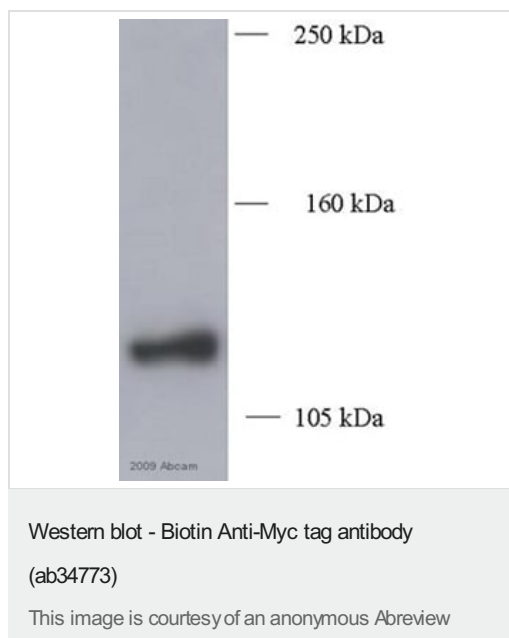
アプリケーション	Abreviews	特記事項
ELISA		1/10000.
WB	★★★★★ (2)	Use a concentration of 0.5 - 1 µg/ml.

ターゲット情報

関連性 Epitope tags are short peptide sequences that are easily recognized by tag-specific antibodies. Due to their small size, epitope tags do not affect the tagged protein's biochemical properties. Most often sequences encoding the epitope tag are included with target DNA at the time of cloning to produce fusion proteins containing the epitope tag sequence. This allows anti-epitope tag antibodies to serve as universal detection reagents for any tag containing protein produced by recombinant means. This means that anti-epitope tag antibodies are a useful alternative to generating specific antibodies to identify, immunoprecipitate or immunoaffinity purify a recombinant protein. The anti-epitope tag antibody is usually functional in a variety of antibody-dependent experimental procedures. Expression vectors producing epitope tag fusion proteins are available for a variety of host expression systems including bacteria, yeast, insect and mammalian cells.

細胞内局在 Nuclear

画像



Mouse NIH 3T3 cells over-expressing pGEN IRES pyk2 Myc-tag. ab34773 was used at 1/2500 dilution. Please see accompanying abreview for additional information.

Please note: All products are "FOR RESEARCH USE ONLY. NOT FOR USE IN DIAGNOSTIC PROCEDURES"

Our Abpromise to you: Quality guaranteed and expert technical support

- Replacement or refund for products not performing as stated on the datasheet
- Valid for 12 months from date of delivery
- Response to your inquiry within 24 hours
- We provide support in Chinese, English, French, German, Japanese and Spanish
- Extensive multi-media technical resources to help you
- We investigate all quality concerns to ensure our products perform to the highest standards

If the product does not perform as described on this datasheet, we will offer a refund or replacement. For full details of the Abpromise, please visit <https://www.abcam.co.jp/abpromise> or contact our technical team.

Terms and conditions

- Guarantee only valid for products bought direct from Abcam or one of our authorized distributors