

### Biotin Anti-MHC class I antibody [AF6-88.5.5.3] ab93528

1 References [画像数 1](#)

#### 製品の概要

製品名	Biotin Anti-MHC class I antibody [AF6-88.5.5.3]
製品の詳細	Biotin Mouse monoclonal [AF6-88.5.5.3] to MHC class I
由来種	Mouse
標識	Biotin
特異性	Reacts with the H-2Kb MHC class I alloantigen. Reactivity to other haplotypes (e.g. d, f, j, k, p, q, r, s, u, and v) has not been observed.
アプリケーション	<b>適用あり:</b> Flow Cyt
種交差性	<b>交差種:</b> Mouse
免疫原	Tissue, cells or virus corresponding to Mouse MHC class I. C57BL Mouse splenocytes.
ポジティブ・コントロール	Splenocytes
特記事項	<p>The Life Science industry has been in the grips of a reproducibility crisis for a number of years. Abcam is leading the way in addressing this with our range of recombinant monoclonal antibodies and knockout edited cell lines for gold-standard validation. Please check that this product meets your needs before purchasing.</p> <p>If you have any questions, special requirements or concerns, please send us an inquiry and/or contact our Support team ahead of purchase. Recommended alternatives for this product can be found below, along with publications, customer reviews and Q&amp;As</p>

#### 製品の特性

製品の状態	Liquid
保存方法	Shipped at 4°C. Store at +4°C short term (1-2 weeks). Store at -20°C or -80°C. Avoid freeze / thaw cycle.
バッファー	pH: 7.2 Preservative: 0.09% Sodium azide
精製度	Affinity purified
ポリ/モノ	モノクローナル
クローン名	AF6-88.5.5.3
アイソタイプ	IgG2a

## アプリケーション

**The Abpromise guarantee**      Abpromise保証は、次のテスト済みアプリケーションにおけるab93528の使用に適用されます  
アプリケーションノートには、推奨の開始希釈率がありますが、適切な希釈率につきましてはご確認ください。

アプリケーション	Abreviews	特記事項
Flow Cyt		

### 追加情報

Flow Cyt: Use 0.06µg for 10<sup>5-8</sup> cells in a final volume of 100µL.

Not yet tested in other applications.

Optimal dilutions/concentrations should be determined by the end user.

## ターゲット情報

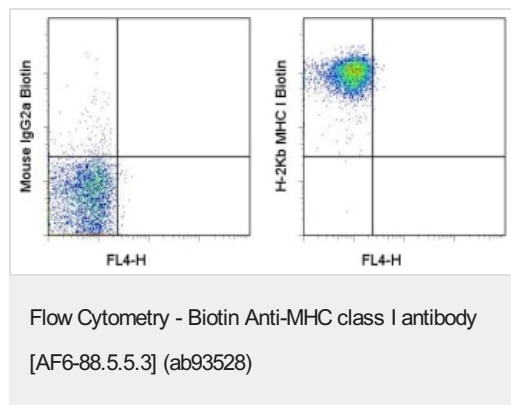
### 関連性

MHC Class I molecules play a central role in the immune system by presenting peptides derived from the endoplasmic reticulum lumen. MHC class I antigens are heterodimers consisting of one alpha chain (44kDa) with beta 2 microglobulin (11.5 kDa). The antigen is expressed by all somatic cells at varying levels. MHC Class I molecules are expressed on most nucleated cells where they present endogenously synthesized antigenic peptides to CD8+ T lymphocytes, which are usually cytotoxic T cells. Fibroblasts or neurons however only show a low level of antigen.

### 細胞内局在

Cell Membrane; Type I membrane protein.

## 画像



Staining of C57Bl/6 splenocytes with 0.06µg of biotin Mouse IgG2a, K Isotype control (left) or 0.06 µg of ab93528(right), followed by Streptavidin-PE.

Total viable cells were used for analysis.

**Please note:** All products are "FOR RESEARCH USE ONLY. NOT FOR USE IN DIAGNOSTIC PROCEDURES"

## Our Abpromise to you: Quality guaranteed and expert technical support

- Replacement or refund for products not performing as stated on the datasheet
- Valid for 12 months from date of delivery
- Response to your inquiry within 24 hours

- We provide support in Chinese, English, French, German, Japanese and Spanish
- Extensive multi-media technical resources to help you
- We investigate all quality concerns to ensure our products perform to the highest standards

If the product does not perform as described on this datasheet, we will offer a refund or replacement. For full details of the Abpromise, please visit <https://www.abcam.co.jp/abpromise> or contact our technical team.

#### **Terms and conditions**

---

- Guarantee only valid for products bought direct from Abcam or one of our authorized distributors