

Biotin Anti-Macrophage inflammatory protein 5 antibody ab83433

画像数 2

製品の概要

製品名	Biotin Anti-Macrophage inflammatory protein 5 antibody
製品の詳細	Biotin Goat polyclonal to Macrophage inflammatory protein 5
由来種	Goat
標識	Biotin
アプリケーション	適用あり: Sandwich ELISA, WB
種交差性	交差種: Recombinant fragment
免疫原	Recombinant full length protein corresponding to Human Macrophage inflammatory protein 5 aa 22-113. Highly pure (>98%) Sequence: QFTNDAETEL MMSKLPLENP VVLNSFHFAA DCCTSYISQS IPCSLMKSYP ETSSECSKPG VIFLTKKGRQ VCAKPSGPGV QDCMKLKP Y SI

Database link: [Q16663](#)

 [Run BLAST with](#)

 [Run BLAST with](#)

特記事項

The Life Science industry has been in the grips of a reproducibility crisis for a number of years. Abcam is leading the way in addressing this with our range of recombinant monoclonal antibodies and knockout edited cell lines for gold-standard validation. Please check that this product meets your needs before purchasing.

If you have any questions, special requirements or concerns, please send us an inquiry and/or contact our Support team ahead of purchase. Recommended alternatives for this product can be found below, along with publications, customer reviews and Q&As

製品の特性

製品の状態	Lyophilized: Reconstitute in sterile PBS containing 0.1% BSA to a concentration of 0.1-1.0 mg/ml.
保存方法	Shipped at 4°C. Store at +4°C short term (1-2 weeks). Store at -20°C or -80°C. Avoid freeze / thaw cycle.
バッファー	pH: 7.20 Constituent: PBS
精製度	IgG fraction

特記事項(精製)	ab83433 is sterile filtered. This antibody was purified by affinity chromatography and then biotinylated.
ポリモノ	ポリクローナル
アイソタイプ	IgG

アプリケーション

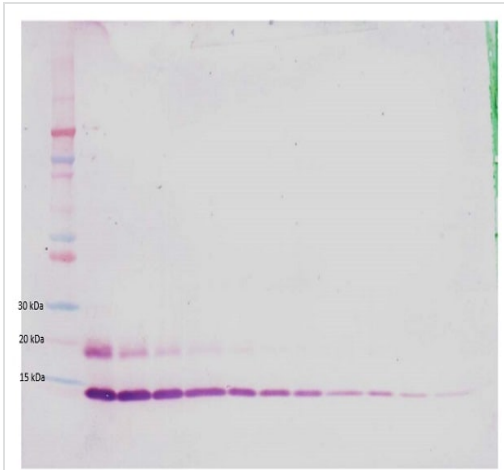
The Abpromise guarantee Abpromise保証は、次のテスト済みアプリケーションにおけるab83433の使用に適用されます
 アプリケーションノートには、推奨の開始希釈率がありますが、適切な希釈率につきましてはご検討ください。

アプリケーション	Abreviews	特記事項
Sandwich ELISA		Use a concentration of 0.25 - 1 µg/ml. Allows the detection of at least 0.2 - 0.4 ng/well of recombinant human Macrophage inflammatory protein 5.
WB		Use a concentration of 0.1 - 0.2 µg/ml. Predicted molecular weight: 12 kDa. The detection limit for recombinant human Macrophage inflammatory protein 5 is 1.5 - 3.0 ng/lane, under either reducing or non-reducing conditions.

ターゲット情報

機能	Chemotactic factor that attracts T-cells and monocytes, but not neutrophils, eosinophils, or B-cells. Acts mainly via CC chemokine receptor CCR1. Also binds to CCR3. CCL15(22-92), CCL15(25-92) and CCL15(29-92) are more potent chemoattractants than the small-inducible cytokine A15.
組織特異性	Most abundant in heart, skeletal muscle and adrenal gland. Lower levels in placenta, liver, pancreas and bone marrow. CCL15(22-92), CCL15(25-92) and CCL15(29-92) are found in high levels in synovial fluids from rheumatoid patients.
配列類似性	Belongs to the intercrine beta (chemokine CC) family.
細胞内局在	Secreted.

画像

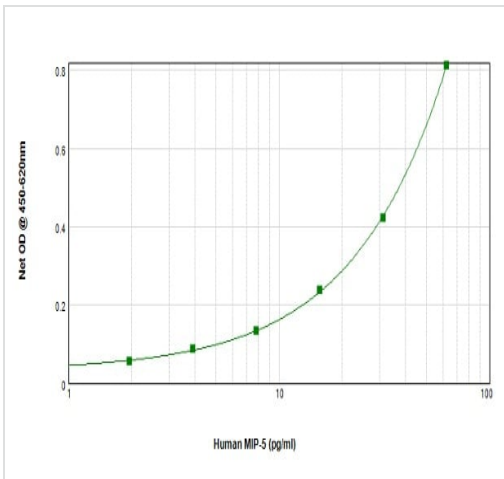


Western blot - Biotin Anti-Macrophage inflammatory protein 5 antibody (ab83433)

To detect human Macrophage inflammatory protein 5 by Western Blot analysis ab83433 can be used at a concentration of 0.1 - 0.2 µg/ml. Used in conjunction with compatible secondary reagents the detection limit for recombinant human Macrophage inflammatory protein 5 is 1.5 - 3.0 ng/lane, under either reducing or non-reducing conditions.

Image shown is non-reducing conditions; human recombinant Macrophage inflammatory protein 5 protein at 250 - 0.24 ng/ml.

Lane 1 is MW marker, lanes 2-12 human recombinant Macrophage inflammatory protein 5 protein.



Sandwich ELISA - Biotin Anti-Macrophage inflammatory protein 5 antibody (ab83433)

To detect human Macrophage inflammatory protein 5 by sandwich ELISA (using 100 µl/well antibody solution) a concentration of 0.25 – 1.0 µg/ml of ab83433 is required. This biotinylated polyclonal antibody, in conjunction with an appropriate anti-Macrophage inflammatory protein 5 as a capture antibody, allows the detection of at least 0.2 – 0.4 ng/well of recombinant human Macrophage inflammatory protein 5.

Please note: All products are "FOR RESEARCH USE ONLY. NOT FOR USE IN DIAGNOSTIC PROCEDURES"

Our Abpromise to you: Quality guaranteed and expert technical support

- Replacement or refund for products not performing as stated on the datasheet
- Valid for 12 months from date of delivery
- Response to your inquiry within 24 hours

- We provide support in Chinese, English, French, German, Japanese and Spanish
- Extensive multi-media technical resources to help you
- We investigate all quality concerns to ensure our products perform to the highest standards

If the product does not perform as described on this datasheet, we will offer a refund or replacement. For full details of the Abpromise, please visit <https://www.abcam.co.jp/abpromise> or contact our technical team.

Terms and conditions

- Guarantee only valid for products bought direct from Abcam or one of our authorized distributors