

Biotin Anti-Macrophage Inflammatory Protein 3 alpha antibody ab271284

画像数 2

製品の概要

製品名	Biotin Anti-Macrophage Inflammatory Protein 3 alpha antibody
製品の詳細	Biotin Rabbit polyclonal to Macrophage Inflammatory Protein 3 alpha
由来種	Rabbit
標識	Biotin
アプリケーション	適用あり: WB, Sandwich ELISA
種交差性	交差種: Recombinant fragment
免疫原	Recombinant full length protein corresponding to Human Macrophage Inflammatory Protein 3 alpha aa 1 to the C-terminus. Mature chain. E. coli derived. Database link: P78556

 [Run BLAST with](#)

 [Run BLAST with](#)

ポジティブ・コントロール

WB: Recombinant human Macrophage Inflammatory Protein 3 alpha.

特記事項

The Life Science industry has been in the grips of a reproducibility crisis for a number of years. Abcam is leading the way in addressing this with our range of recombinant monoclonal antibodies and knockout edited cell lines for gold-standard validation. Please check that this product meets your needs before purchasing.

If you have any questions, special requirements or concerns, please send us an inquiry and/or contact our Support team ahead of purchase. Recommended alternatives for this product can be found below, along with publications, customer reviews and Q&As

製品の特性

製品の状態	Lyophilized:Reconstitute in sterile PBS with 0.1% BSA to 0.1 - 1.0 mg/ml.
保存方法	Shipped at 4°C. Store at +4°C short term (1-2 weeks). Upon delivery aliquot. Store at -20°C long term. Avoid freeze / thaw cycle. Store In the Dark.
バッファー	Constituents: PBS, 0.1% BSA
精製度	Affinity purified
ポリ/モノ	ポリクローナル
アイソタイプ	IgG

アプリケーション

The Abpromise guarantee Abpromise保証は、次のテスト済みアプリケーションにおけるab271284の使用に適用されます
アプリケーションノートには、推奨の開始希釈率がありますが、適切な希釈率につきましてはご検討ください。

アプリケーション	Abreviews	特記事項
WB		Use a concentration of 0.1 - 0.2 µg/ml. Predicted molecular weight: 10 kDa. When used in conjunction with compatible secondary reagents, the detection limit for recombinant human Macrophage Inflammatory Protein 3 alpha is 1.5 - 3.0 ng/lane, under either reducing or non-reducing conditions.
Sandwich ELISA		Use at an assay dependent concentration.

ターゲット情報

機能	Chemotactic factor that attracts lymphocytes and, slightly, neutrophils, but not monocytes. Inhibits proliferation of myeloid progenitors in colony formation assays. May be involved in formation and function of the mucosal lymphoid tissues by attracting lymphocytes and dendritic cells towards epithelial cells. C-terminal processed forms have been shown to be equally chemotactically active for leukocytes. Possesses antibacterial activity E.coli ATCC 25922 and S.aureus ATCC 29213.
組織特異性	Expressed predominantly in the liver, lymph nodes, appendix, peripheral blood lymphocytes, and fetal lung. Low levels seen in thymus, prostate, testis, small intestine and colon.
配列類似性	Belongs to the intercrine beta (chemokine CC) family.
翻訳後修飾	C-terminal processed forms which lack 1, 3 or 6 amino acids are produced by proteolytic cleavage after secretion from peripheral blood monocytes.
細胞内局在	Secreted.

画像



Western blot - Biotin Anti-Macrophage Inflammatory Protein 3 alpha antibody (ab271284)

Lane 1: Marker.

Lane 2: Recombinant hMIP3 alpha at 250ng/lane.

Lane 3: Recombinant hMIP3 alpha at 125ng/lane.

Lane 4: Recombinant hMIP3 alpha at 62.5ng/lane.

Lane 5: Recombinant hMIP3 alpha at 31.25ng/lane.

Lane 6: Recombinant hMIP3 alpha at 15.625ng/lane.

Lane 7: Recombinant hMIP3 alpha at 7.8ng/lane.

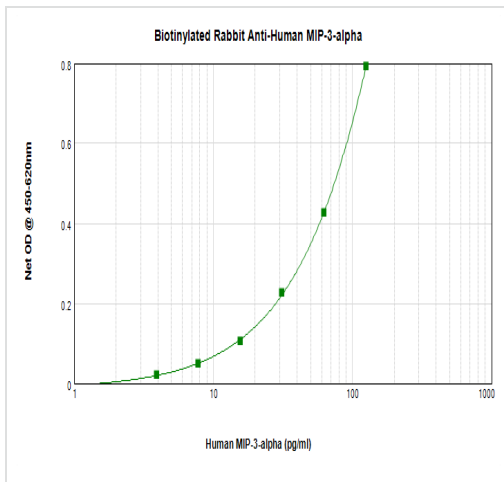
Lane 8: Recombinant hMIP3 alpha at 3.9ng/lane.

Lane 9: Recombinant hMIP3 alpha at 1.95ng/lane.

Lane 10: Recombinant hMIP3 alpha at 0.975ng/lane.

Lane 11: Recombinant hMIP3 alpha at 0.4875ng/lane.

Lane 12: Recombinant hMIP3 alpha at 0.24ng/lane.



Sandwich ELISA - Biotin Anti-Macrophage Inflammatory Protein 3 alpha antibody (ab271284)

Human Macrophage Inflammatory Protein 3 alpha was detected by sandwich ELISA (using 100µl/well) using a concentration of 0.25-1.0 µg/ml of ab271284. This antibody in conjunction with an appropriate capture antibody, allows the detection of at least 0.2 – 0.4 ng/well of recombinant Macrophage Inflammatory Protein 3 alpha protein.

Please note: All products are "FOR RESEARCH USE ONLY. NOT FOR USE IN DIAGNOSTIC PROCEDURES"

Our Abpromise to you: Quality guaranteed and expert technical support

- Replacement or refund for products not performing as stated on the datasheet
- Valid for 12 months from date of delivery
- Response to your inquiry within 24 hours
- We provide support in Chinese, English, French, German, Japanese and Spanish
- Extensive multi-media technical resources to help you
- We investigate all quality concerns to ensure our products perform to the highest standards

If the product does not perform as described on this datasheet, we will offer a refund or replacement. For full details of the Abpromise, please visit <https://www.abcam.co.jp/abpromise> or contact our technical team.

Terms and conditions

- Guarantee only valid for products bought direct from Abcam or one of our authorized distributors