

Product datasheet

Biotin Anti-Macrophage Inflammatory Protein 1 alpha / CCL3 antibody ab271271

画像数 1

製品の概要

製品名	Biotin Anti-Macrophage Inflammatory Protein 1 alpha / CCL3 antibody
製品の詳細	Biotin Rabbit polyclonal to MIP-1 alpha/CCL3
由来種	Rabbit
標識	Biotin
アプリケーション	適用あり: ELISA
免疫原	Recombinant fragment corresponding to Rat MIP-1 alpha/CCL3 aa 1 to the C-terminus. Database link: P50229

 [Run BLAST with](#)

 [Run BLAST with](#)

特記事項

The Life Science industry has been in the grips of a reproducibility crisis for a number of years. Abcam is leading the way in addressing this with our range of recombinant monoclonal antibodies and knockout edited cell lines for gold-standard validation. Please check that this product meets your needs before purchasing.

If you have any questions, special requirements or concerns, please send us an inquiry and/or contact our Support team ahead of purchase. Recommended alternatives for this product can be found below, along with publications, customer reviews and Q&As

製品の特性

製品の状態	Lyophilized:Reconstitute in sterile PBS with 0.1% BSA to 0.1 - 1.0 mg/ml.
保存方法	Shipped at 4°C. Store at +4°C short term (1-2 weeks). Upon delivery aliquot. Store at -20°C long term. Avoid freeze / thaw cycle. Store In the Dark.
バッファー	Constituents: PBS, 0.1% BSA
精製度	Affinity purified
ポリモノ	ポリクローナル
アイソタイプ	IgG

アプリケーション

The Abpromise guarantee

Abpromise保証は、次のテスト済みアプリケーションにおけるab271271の使用に適用されます

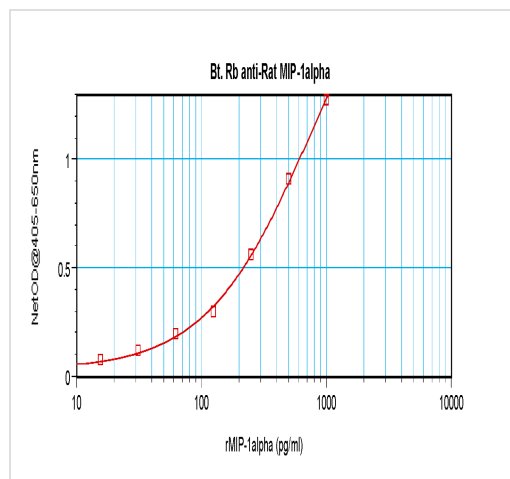
アプリケーションノートには、推奨の開始希釈率がありますが、適切な希釈率につきましてはご確認ください。

アプリケーション	Abreviews	特記事項
ELISA		Use a concentration of 0.25 - 1 µg/ml. Rat MIP-1α was detected by sandwich ELISA (using 100µl/well) using a concentration of 0.25-1.0 µg/ml of ab271271. This antibody in conjunction with an appropriate capture antibody, allows the detection of at least 0.2 – 0.4 ng/well of recombinant Rat MIP-1α protein.

ターゲット情報

機能	Monokine with inflammatory and chemokinetic properties. Binds to CCR1, CCR4 and CCR5. One of the major HIV-suppressive factors produced by CD8+ T-cells. Recombinant MIP-1-alpha induces a dose-dependent inhibition of different strains of HIV-1, HIV-2, and simian immunodeficiency virus (SIV).
配列類似性	Belongs to the intercrine beta (chemokine CC) family.
翻訳後修飾	N-terminal processed form LD78-alpha(4-69) is produced by proteolytic cleavage after secretion from HTLV1-transformed T-cells.
細胞内局在	Secreted.

画像



Human Macrophage Inflammatory Protein 1 alpha / CCL3 was detected by sandwich ELISA (using 100 µl/well) using a concentration of 0.25-1.0 µg/ml of ab271271. This antibody in conjunction with an appropriate capture antibody, allows the detection of at least 1.5 - 3.0 ng/lane of recombinant Macrophage Inflammatory Protein 1 alpha / CCL3 protein.

ELISA - Biotin Anti-MIP-1 alpha/CCL3 antibody
(ab271271)

Please note: All products are "FOR RESEARCH USE ONLY. NOT FOR USE IN DIAGNOSTIC PROCEDURES"

Our Abpromise to you: Quality guaranteed and expert technical support

- Replacement or refund for products not performing as stated on the datasheet

- Valid for 12 months from date of delivery
- Response to your inquiry within 24 hours

- We provide support in Chinese, English, French, German, Japanese and Spanish
- Extensive multi-media technical resources to help you
- We investigate all quality concerns to ensure our products perform to the highest standards

If the product does not perform as described on this datasheet, we will offer a refund or replacement. For full details of the Abpromise, please visit <https://www.abcam.co.jp/abpromise> or contact our technical team.

Terms and conditions

- Guarantee only valid for products bought direct from Abcam or one of our authorized distributors