

Product datasheet

Biotin Anti-M-CSF/CSF1 antibody ab271262

画像数 2

製品の概要

製品名	Biotin Anti-M-CSF/CSF1 antibody
製品の詳細	Biotin Goat polyclonal to M-CSF/CSF1
由来種	Goat
標識	Biotin
アプリケーション	適用あり: WB, Sandwich ELISA
種交差性	交差種: Mouse
免疫原	Recombinant fragment corresponding to Mouse M-CSF/CSF1 aa 1-200. Database link: P07141

 [Run BLAST with](#)

 [Run BLAST with](#)

特記事項

The Life Science industry has been in the grips of a reproducibility crisis for a number of years. Abcam is leading the way in addressing this with our range of recombinant monoclonal antibodies and knockout edited cell lines for gold-standard validation. Please check that this product meets your needs before purchasing.

If you have any questions, special requirements or concerns, please send us an inquiry and/or contact our Support team ahead of purchase. Recommended alternatives for this product can be found below, along with publications, customer reviews and Q&As

製品の特性

製品の状態	Lyophilized: Reconstitute in sterile PBS with 0.1% BSA to 0.1 - 1.0 mg/ml.
保存方法	Shipped at 4°C. Store at +4°C short term (1-2 weeks). Upon delivery aliquot. Store at -20°C long term. Avoid freeze / thaw cycle. Store In the Dark.
バッファー	Constituents: PBS, 0.1% BSA
精製度	Affinity purified
ポリ/モノ	ポリクローナル
アイソタイプ	IgG

アプリケーション

The Abpromise guarantee

Abpromise保証は、次のテスト済みアプリケーションにおけるab271262の使用に適用されます

アプリケーションノートには、推奨の開始希釈率がありますが、適切な希釈率につきましてはご確認ください。

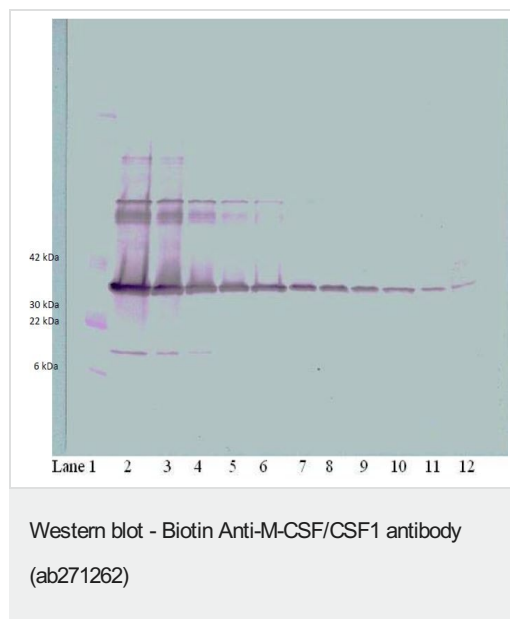
アプリケーション	Abreviews	特記事項
WB		Use a concentration of 0.1 - 0.2 µg/ml. Predicted molecular weight: 60 kDa.
Sandwich ELISA		Use at an assay dependent concentration.

ターゲット情報

関連性 Cytokine that plays an essential role in the regulation of survival, proliferation and differentiation of hematopoietic precursor cells, especially mononuclear phagocytes, such as macrophages and monocytes. Promotes the release of proinflammatory chemokines, and thereby plays an important role in innate immunity and in inflammatory processes. Plays an important role in the regulation of osteoclast proliferation and differentiation, the regulation of bone resorption, and is required for normal bone development. Required for normal male and female fertility. Promotes reorganization of the actin cytoskeleton, regulates formation of membrane ruffles, cell adhesion and cell migration. Plays a role in lipoprotein clearance.

細胞内局在 Cell membrane; Single-pass membrane protein

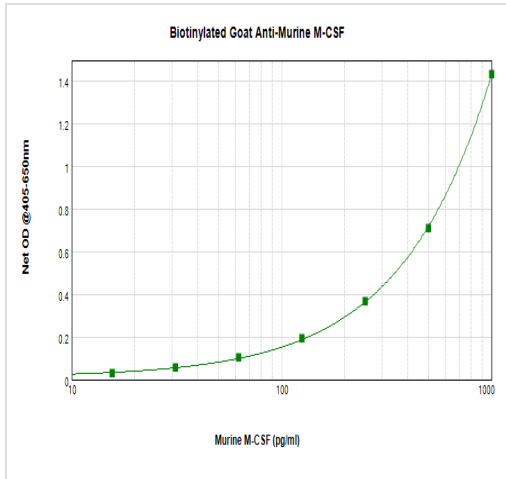
画像



Western blot analysis of varying levels of Recombinant murine M-CSF protein using ab271262 at 0.1 µg/ml.

Used in conjunction with compatible secondary reagents the detection limit for recombinant M-CSF is 1.5 - 3.0 ng/lane, under either reducing or non-reducing conditions.

Lane	ng/lane
1	Marker
2	250
3	125
4	62.5
5	31.25
6	15.625
7	7.8
8	3.9
9	1.95
10	0.975
11	0.4875
12	0.24



Sandwich ELISA - Biotin Anti-M-CSF/CSF1 antibody (ab271262)

Mouse M-CSF was detected by sandwich ELISA (using 100µl/well) using a concentration of 0.25-1.0 µg/ml of ab271262. This antibody in conjunction with an appropriate capture antibody, allows the detection of at least 0.2 – 0.4 ng/well of recombinant mM-CSF protein.

Please note: All products are "FOR RESEARCH USE ONLY. NOT FOR USE IN DIAGNOSTIC PROCEDURES"

Our Abpromise to you: Quality guaranteed and expert technical support

- Replacement or refund for products not performing as stated on the datasheet
- Valid for 12 months from date of delivery
- Response to your inquiry within 24 hours
- We provide support in Chinese, English, French, German, Japanese and Spanish
- Extensive multi-media technical resources to help you
- We investigate all quality concerns to ensure our products perform to the highest standards

If the product does not perform as described on this datasheet, we will offer a refund or replacement. For full details of the Abpromise, please visit <https://www.abcam.co.jp/abpromise> or contact our technical team.

Terms and conditions

- Guarantee only valid for products bought direct from Abcam or one of our authorized distributors