

Biotin Anti-IRE1 (phospho S724) antibody ab81936

★★★★★ [1 Abreviews](#) [1 References](#) [画像数 1](#)

製品の概要

製品名	Biotin Anti-IRE1 (phospho S724) antibody
製品の詳細	Biotin Rabbit polyclonal to IRE1 (phospho S724)
由来種	Rabbit
標識	Biotin
アプリケーション	適用あり: IHC-P
種交差性	交差種: Mouse, Rat, Human 非交差種: Monkey
免疫原	Synthetic peptide corresponding to Human IRE1 (phospho S724).
ポジティブ・コントロール	Glucose treated pancreatic islets and endogenous protein of pancreatic beta cells and insuli. COS-7 expressing wild-type IRE1. Min6 cells treated with glucose.
特記事項	<p>The Life Science industry has been in the grips of a reproducibility crisis for a number of years. Abcam is leading the way in addressing this with our range of recombinant monoclonal antibodies and knockout edited cell lines for gold-standard validation. Please check that this product meets your needs before purchasing.</p> <p>If you have any questions, special requirements or concerns, please send us an inquiry and/or contact our Support team ahead of purchase. Recommended alternatives for this product can be found below, along with publications, customer reviews and Q&As</p>

製品の特性

製品の状態	Liquid
保存方法	Shipped at 4°C. Store at +4°C short term (1-2 weeks). Store at -20°C or -80°C. Avoid freeze / thaw cycle.
バッファー	Constituents: 30% Glycerol, PBS
精製度	Immunogen affinity purified
ポリ/モノ	ポリクローナル
アイソタイプ	IgG

アプリケーション

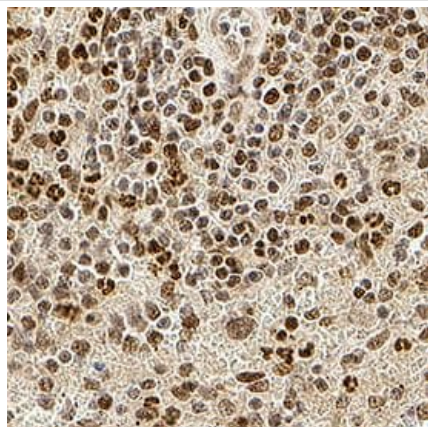
The Abpromise guarantee Abpromise保証は、 次のテスト済みアプリケーションにおけるab81936の使用に適用されます
アプリケーションノートには、推奨の開始希釈率がありますが、適切な希釈率につきましてはご検討ください。

アプリケーション	Abreviews	特記事項
IHC-P		1/300.

ターゲット情報

機能	Senses unfolded proteins in the lumen of the endoplasmic reticulum via its N-terminal domain which leads to enzyme auto-activation. The active endoribonuclease domain splices XBP1 mRNA to generate a new C-terminus, converting it into a potent unfolded-protein response transcriptional activator and triggering growth arrest and apoptosis.
組織特異性	Ubiquitously expressed. High levels observed in pancreatic tissue.
配列類似性	Belongs to the protein kinase superfamily. Ser/Thr protein kinase family. Contains 1 KEN domain. Contains 1 protein kinase domain.
翻訳後修飾	Autophosphorylated.
細胞内局在	Endoplasmic reticulum membrane.

画像



Immunohistochemistry (Formalin/PFA-fixed paraffin-embedded sections) analysis of human spleen tissue labelling IRE1 with the unconjugated version of at81936 at 1/300 dilution.

Immunohistochemistry (Formalin/PFA-fixed paraffin-embedded sections) - Biotin Anti-IRE1 (phospho S724) antibody (ab81936)

Please note: All products are "FOR RESEARCH USE ONLY. NOT FOR USE IN DIAGNOSTIC PROCEDURES"

Our Abpromise to you: Quality guaranteed and expert technical support

- Replacement or refund for products not performing as stated on the datasheet
- Valid for 12 months from date of delivery

- Response to your inquiry within 24 hours
- We provide support in Chinese, English, French, German, Japanese and Spanish
- Extensive multi-media technical resources to help you
- We investigate all quality concerns to ensure our products perform to the highest standards

If the product does not perform as described on this datasheet, we will offer a refund or replacement. For full details of the Abpromise, please visit <https://www.abcam.co.jp/abpromise> or contact our technical team.

Terms and conditions

- Guarantee only valid for products bought direct from Abcam or one of our authorized distributors