

# Biotin Anti-IL-25 antibody ab271280

画像数 2

### 製品の概要

---

製品名	Biotin Anti-IL-25 antibody
製品の詳細	Biotin Rabbit polyclonal to IL-25
由来種	Rabbit
標識	Biotin
アプリケーション	<b>適用あり:</b> WB, Sandwich ELISA
種交差性	<b>交差種:</b> Recombinant fragment
免疫原	Recombinant fragment corresponding to Human IL-25 aa 1 to the C-terminus. E. coli derived. Database link: <a href="#">Q9H293</a>

 [Run BLAST with](#)

 [Run BLAST with](#)

ポジティブ・コントロール WB: Recombinant human IL-25.

### 特記事項

The Life Science industry has been in the grips of a reproducibility crisis for a number of years. Abcam is leading the way in addressing this with our range of recombinant monoclonal antibodies and knockout edited cell lines for gold-standard validation. Please check that this product meets your needs before purchasing.

If you have any questions, special requirements or concerns, please send us an inquiry and/or contact our Support team ahead of purchase. Recommended alternatives for this product can be found below, along with publications, customer reviews and Q&As

### 製品の特性

---

製品の状態	Lyophilized:Reconstitute in sterile PBS with 0.1% BSA to 0.1 - 1.0 mg/ml.
保存方法	Shipped at 4°C. Store at +4°C short term (1-2 weeks). Upon delivery aliquot. Store at -20°C long term. Avoid freeze / thaw cycle. Store In the Dark.
バッファー	Constituents: PBS, 0.1% BSA
精製度	Affinity purified
ポリ/モノ	ポリクローナル
アイソタイプ	IgG

### アプリケーション

---

## The Abpromise guarantee

**Abpromise保証は、次のテスト済みアプリケーションにおけるab271280の使用に適用されます**

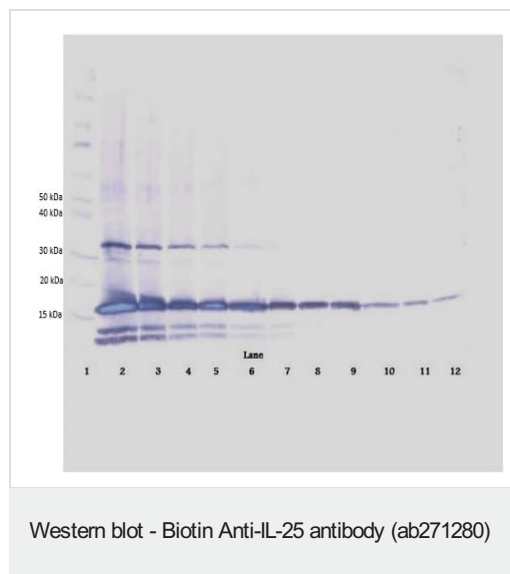
アプリケーションノートには、推奨の開始希釈率がありますが、適切な希釈率につきましてはご検討ください。

アプリケーション	Abreviews	特記事項
WB		Use a concentration of 0.1 - 0.2 µg/ml. Predicted molecular weight: 20 kDa. When used in conjunction with compatible secondary reagents the detection limit for recombinant Human IL-25 is 1.5 - 3.0 ng/lane, under either reducing or non-reducing conditions.
Sandwich ELISA		Use at an assay dependent concentration.

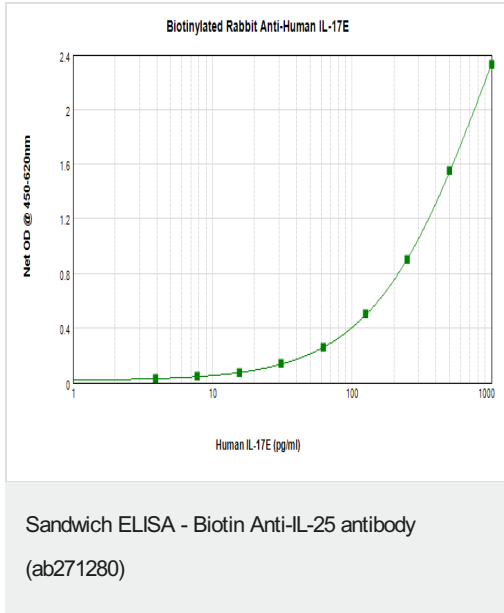
## ターゲット情報

機能	Induces activation of NF-kappa-B and stimulates production of the proinflammatory chemokine IL-8. Proinflammatory cytokine favoring Th2-type immune responses.
組織特異性	Expressed at low levels in several tissues, including brain, kidney, lung, prostate, testis, spinal cord, adrenal gland, and trachea.
配列類似性	Belongs to the IL-17 family.
細胞内局在	Secreted.

## 画像



- Lane 1: Marker.
- Lane 2: Recombinant hIL-25 at 250ng/lane.
- Lane 3: Recombinant hIL-25 at 125ng/lane.
- Lane 4: Recombinant hIL-25 at 62.5ng/lane.
- Lane 5: Recombinant hIL-25 at 31.25ng/lane.
- Lane 6: Recombinant hIL-25 at 15.625ng/lane.
- Lane 7: Recombinant hIL-25 at 7.8ng/lane.
- Lane 8: Recombinant hIL-25 at 3.9ng/lane.
- Lane 9: Recombinant hIL-25 at 1.95ng/lane.
- Lane 10: Recombinant hIL-25 at 0.975ng/lane.
- Lane 11: Recombinant hIL-25 at 0.4875ng/lane.
- Lane 12: Recombinant hIL-25 at 0.24ng/lane.



Human IL-17E (IL-25) was detected by sandwich ELISA (using 100µl/well) using a concentration of 0.25-1.0 µg/ml of ab271280. This antibody in conjunction with an appropriate capture antibody, allows the detection of at least 0.2 - 0.4 ng/well of recombinant IL-17E protein.

**Please note:** All products are "FOR RESEARCH USE ONLY. NOT FOR USE IN DIAGNOSTIC PROCEDURES"

### Our Abpromise to you: Quality guaranteed and expert technical support

- Replacement or refund for products not performing as stated on the datasheet
- Valid for 12 months from date of delivery
- Response to your inquiry within 24 hours
- We provide support in Chinese, English, French, German, Japanese and Spanish
- Extensive multi-media technical resources to help you
- We investigate all quality concerns to ensure our products perform to the highest standards

If the product does not perform as described on this datasheet, we will offer a refund or replacement. For full details of the Abpromise, please visit <https://www.abcam.co.jp/abpromise> or contact our technical team.

### Terms and conditions

- Guarantee only valid for products bought direct from Abcam or one of our authorized distributors