

Biotin Anti-HLA Class I antibody [W6/32] ab110665

4 References [画像数 2](#)

製品の概要

製品名	Biotin Anti-HLA Class I antibody [W6/32]
製品の詳細	Biotin Mouse monoclonal [W6/32] to HLA Class I
由来種	Mouse
標識	Biotin
アプリケーション	適用あり: Flow Cyt
種交差性	交差種: Cow, Cat, Human, Non human primates 非交差種: Rabbit
免疫原	Tissue, cells or virus corresponding to Human HLA Class I. Membrane of human tonsil cells
特記事項	<p>Suitable as a positive control for HLA tissue typing and crossmatching.</p> <p>The purified antibody (>95% by SDS-PAGE) is conjugated with Biotin-LC-NHS under optimum conditions. The reagent is free of unconjugated biotin.</p> <p>The Life Science industry has been in the grips of a reproducibility crisis for a number of years. Abcam is leading the way in addressing this with our range of recombinant monoclonal antibodies and knockout edited cell lines for gold-standard validation. Please check that this product meets your needs before purchasing.</p> <p>If you have any questions, special requirements or concerns, please send us an inquiry and/or contact our Support team ahead of purchase. Recommended alternatives for this product can be found below, along with publications, customer reviews and Q&As</p>

製品の特性

製品の状態	Liquid
保存方法	Shipped at 4°C. Store at +4°C short term (1-2 weeks). Store at -20°C or -80°C. Avoid freeze / thaw cycle.
バッファー	pH: 7.40 Preservative: 0.1% Sodium azide Constituent: PBS
精製度	Size exclusion
一次抗体 備考	Suitable as a positive control for HLA tissue typing and crossmatching.
ポリ/モノ	モノクローナル

クローン名 W6/32
アイソタイプ IgG2a

アプリケーション

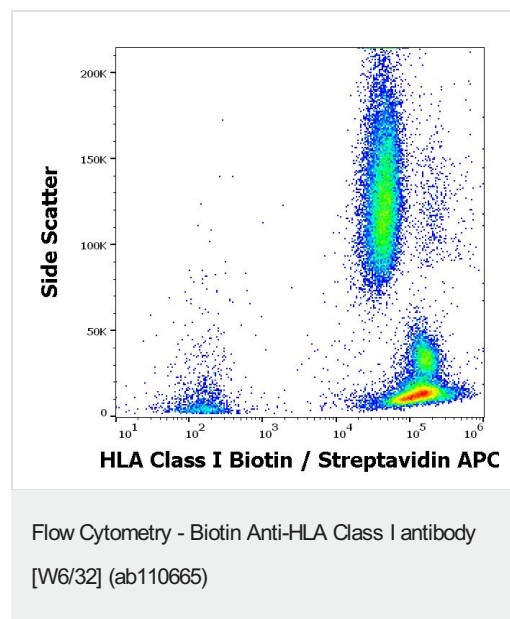
The Abpromise guarantee Abpromise保証は、 次のテスト済みアプリケーションにおけるab110665の使用に適用されます
アプリケーションノートには、推奨の開始希釈率がありますが、適切な希釈率につきましてはご確認ください。

アプリケーション	Abreviews	特記事項
Flow Cyt		Use a concentration of 1 - 12 µg/ml.

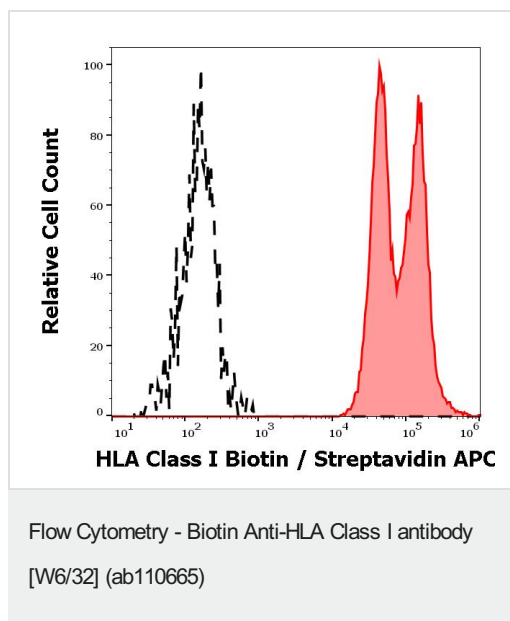
ターゲット情報

関連性 HLA Class I is involved in the presentation of foreign antigens to the immune system.
細胞内局在 Plasma membrane

画像



Flow cytometry surface staining pattern of human peripheral whole blood stained using ab110665 at 4 µg/ml.



Separation of human leukocytes (red-filled) from HLA Class I negative blood debris (black-dashed) in flow cytometry analysis (surface staining) of human peripheral whole blood using ab110665 at 4 µg/ml.

Please note: All products are "FOR RESEARCH USE ONLY. NOT FOR USE IN DIAGNOSTIC PROCEDURES"

Our Abpromise to you: Quality guaranteed and expert technical support

- Replacement or refund for products not performing as stated on the datasheet
- Valid for 12 months from date of delivery
- Response to your inquiry within 24 hours
- We provide support in Chinese, English, French, German, Japanese and Spanish
- Extensive multi-media technical resources to help you
- We investigate all quality concerns to ensure our products perform to the highest standards

If the product does not perform as described on this datasheet, we will offer a refund or replacement. For full details of the Abpromise, please visit <https://www.abcam.co.jp/abpromise> or contact our technical team.

Terms and conditions

- Guarantee only valid for products bought direct from Abcam or one of our authorized distributors