

Biotin Anti-beta Galactosidase antibody ab6645

4 References 画像数 1

製品の概要

製品名	Biotin Anti-beta Galactosidase antibody
製品の詳細	Biotin Rabbit polyclonal to beta Galactosidase
由来種	Rabbit
標識	Biotin
アプリケーション	適用あり: Dot blot, ELISA, WB, IHC-P
種交差性	交差種: Escherichia coli
免疫原	Full length native protein (purified) corresponding to Escherichia coli beta Galactosidase.
特記事項	<p>Biotinamidocaproate N-Hydroxysuccinimide Ester (BAC) Biotin/Protein Ratio: 10-20 BAC molecules per rabbit IgG molecule.</p> <p>The Life Science industry has been in the grips of a reproducibility crisis for a number of years. Abcam is leading the way in addressing this with our range of recombinant monoclonal antibodies and knockout edited cell lines for gold-standard validation. Please check that this product meets your needs before purchasing.</p> <p>If you have any questions, special requirements or concerns, please send us an inquiry and/or contact our Support team ahead of purchase. Recommended alternatives for this product can be found below, along with publications, customer reviews and Q&As</p>

製品の特性

製品の状態	Liquid
保存方法	Shipped at 4°C. Store at +4°C short term (1-2 weeks). Store at -20°C or -80°C. Avoid freeze / thaw cycle.
バッファー	<p>pH: 6.50</p> <p>Preservative: 0.01% Sodium azide</p> <p>Constituents: 0.42% Tripotassium orthophosphate, 0.87% Sodium chloride, 1% BSA</p>
精製度	IgG fraction
特記事項 (精製)	This product is an IgG fraction antibody purified from monospecific antiserum by a multi-step process which includes delipidation, salt fractionation and ion exchange chromatography followed by extensive dialysis against the buffer.
ポリ/モノ	ポリクローナル

アプリケーション

The Abpromise guarantee Abpromise保証は、 次のテスト済みアプリケーションにおけるab6645の使用に適用されます
アプリケーションノートには、推奨の開始希釈率がありますが、適切な希釈率につきましてはご確認ください。

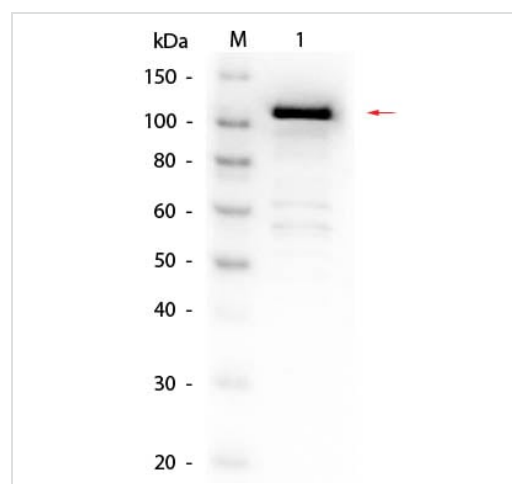
アプリケーション	Abreviews	特記事項
Dot blot		Use at an assay dependent concentration.
ELISA		1/10000 - 1/50000.
WB		1/2000 - 1/10000.
IHC-P		1/1000 - 1/5000.

ターゲット情報

関連性 Beta galactosidase is coded by a gene (lac z) in the lac operon of Escherichia coli. It is a metalloenzyme that splits lactose into glucose and galactose. It hydrolyzes terminal, non-reducing beta-D-galactose residues in beta-D-galactosides. Activation by cations seems to be substrate dependent. K⁺, Na⁺, NH₄⁺, Rb⁺, Cs⁺ and Mn⁺⁺ all activate enzyme activity based upon the substrate used.

細胞内局在 Cytoplasmic

画像



Western blot - Biotin Anti-beta Galactosidase antibody (ab6645)

Biotin Anti-beta Galactosidase antibody (ab6645) at 1/1000 dilution
+ Beta Galactosidase at 0.05 µg with Blocking buffer

Secondary

HRP streptavidin conjugate at 1/40000 dilution

Our Abpromise to you: Quality guaranteed and expert technical support

- Replacement or refund for products not performing as stated on the datasheet
- Valid for 12 months from date of delivery
- Response to your inquiry within 24 hours

- We provide support in Chinese, English, French, German, Japanese and Spanish
- Extensive multi-media technical resources to help you
- We investigate all quality concerns to ensure our products perform to the highest standards

If the product does not perform as described on this datasheet, we will offer a refund or replacement. For full details of the Abpromise, please visit <https://www.abcam.co.jp/abpromise> or contact our technical team.

Terms and conditions

- Guarantee only valid for products bought direct from Abcam or one of our authorized distributors