

### Anti-Biotin antibody ab53494

★★★★★ [1 Abreviews](#) [47 References](#) [画像数 1](#)

#### 製品の概要

製品名	Anti-Biotin antibody
製品の詳細	Rabbit polyclonal to Biotin
由来種	Rabbit
特異性	Reacts with free biotin and biotinylated antibody and proteins
アプリケーション	<b>適用あり:</b> WB, Competitive ELISA, IP, ICC/IF
種交差性	<b>交差種:</b> Species independent
免疫原	Chemical/ Small Molecule corresponding to Biotin conjugated to keyhole limpet haemocyanin.
特記事項	<p>The Life Science industry has been in the grips of a reproducibility crisis for a number of years. Abcam is leading the way in addressing this with our range of recombinant monoclonal antibodies and knockout edited cell lines for gold-standard validation. Please check that this product meets your needs before purchasing.</p> <p>If you have any questions, special requirements or concerns, please send us an inquiry and/or contact our Support team ahead of purchase. Recommended alternatives for this product can be found below, along with publications, customer reviews and Q&amp;As</p>

#### 製品の特性

製品の状態	Liquid
保存方法	Shipped at 4°C. Upon delivery aliquot and store at -20°C. Avoid freeze / thaw cycles.
バッファー	pH: 6.00 Constituents: 50% Glycerol, PBS
精製度	Immunogen affinity purified
特記事項(精製)	Affinity purified with d-Biotin-agarose beads
ポリ/モノ	ポリクローナル
アイソタイプ	IgG

#### アプリケーション

The Abpromise guarantee

Abpromise保証は、次のテスト済みアプリケーションにおけるab53494の使用に適用されます

アプリケーションノートには、推奨の開始希釈率がありますが、適切な希釈率につきましてはご確認ください。

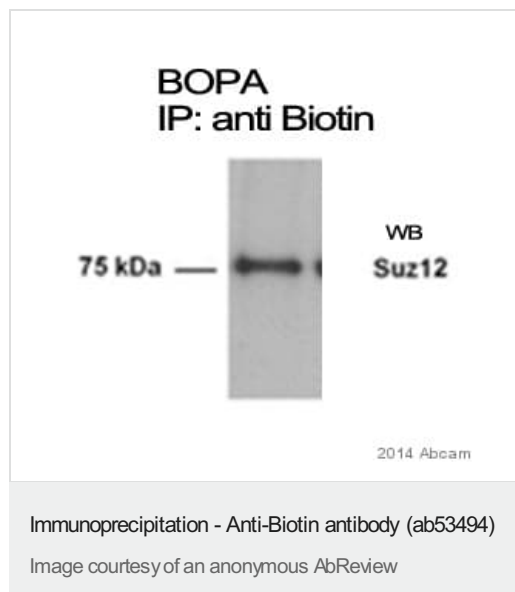
アプリケーション	Abreviews	特記事項
WB		Use at an assay dependent dilution. Predicted molecular weight: 1 kDa.
Competitive ELISA		Use at an assay dependent dilution. (sensitivity: 0.01 ng/mL).
IP	★★★★★ (1)	Use at an assay dependent dilution.
ICC/IF		Use at an assay dependent dilution.

## ターゲット情報

関連性

Biotin is a water soluble vitamin, generally classified as a B complex vitamin, also called vitamin B4. After the initial discovery of biotin, nearly forty years of research were required to establish it as a vitamin. Biotin is required by all organisms but can only be synthesized by bacteria, yeasts, molds, algae, and some plant species. Biotin is required as prosthetic group of enzymes involved in incorporation of carbon dioxide into organic compounds. Biotin has a MW of 244 Da.

## 画像



RWP1 cells were lysed with Polysomal Lysis Buffer and diluted in binding buffer (20 mM Hepes pH 7.6, 150 mM KCl, 3 mM MgCl<sub>2</sub>, 10% glycerol, 3 mg/ml BSA, 0.2 Triton X-100, 20 µg/ml poly dI-dC, 1 mM DDT, plus protease and RNase inhibitors). Pre-clearing was performed by incubating with protein G-agarose blocked with salmon sperm (1 mg/mL) and mouse IgG (10 µg/mL). After pre-clearing, samples (500 µg) were incubated 4 hours in binding buffer with the DNA-biotinylated probes (2 µg) and antibody against biotin (20 µg/mL) in a final volume of 1 mL. Samples were pulled-down with protein G-agarose, washed with binding buffer supplemented with 0.1% Tween-20 and analyzed by Western Blot for Suz12.

**Please note:** All products are "FOR RESEARCH USE ONLY. NOT FOR USE IN DIAGNOSTIC PROCEDURES"

## Our Abpromise to you: Quality guaranteed and expert technical support

- Replacement or refund for products not performing as stated on the datasheet
- Valid for 12 months from date of delivery
- Response to your inquiry within 24 hours

- We provide support in Chinese, English, French, German, Japanese and Spanish
- Extensive multi-media technical resources to help you
- We investigate all quality concerns to ensure our products perform to the highest standards

If the product does not perform as described on this datasheet, we will offer a refund or replacement. For full details of the Abpromise, please visit <https://www.abcam.co.jp/abpromise> or contact our technical team.

#### **Terms and conditions**

---

- Guarantee only valid for products bought direct from Abcam or one of our authorized distributors