

Anti-Biotin antibody ab1227

★★★★★ **7 Abreviews** **14 References** 画像数 1

製品の概要

製品名	Anti-Biotin antibody
製品の詳細	Rabbit polyclonal to Biotin
由来種	Rabbit
アプリケーション	適用あり: ICC/IF, WB, IHC, ELISA, IP
種交差性	交差種: Species independent
免疫原	Chemical/ Small Molecule corresponding to Biotin conjugated to keyhole limpet haemocyanin. Rabbits were immunized with KLH-Biotin. After multiple immunizations in Freund's adjuvant the rabbits were bled and serum collected.
特記事項	<p>The Life Science industry has been in the grips of a reproducibility crisis for a number of years. Abcam is leading the way in addressing this with our range of recombinant monoclonal antibodies and knockout edited cell lines for gold-standard validation. Please check that this product meets your needs before purchasing.</p> <p>If you have any questions, special requirements or concerns, please send us an inquiry and/or contact our Support team ahead of purchase. Recommended alternatives for this product can be found below, along with publications, customer reviews and Q&As</p>

製品の特性

製品の状態	Liquid
保存方法	Shipped at 4°C. Upon delivery aliquot and store at -20°C. Avoid freeze / thaw cycles.
バッファー	pH: 6.8 Preservative: 0.1% Sodium azide
精製度	Immunogen affinity purified
特記事項 (精製)	The antibodies were isolated using affinity chromatography with Lysine-Biotin as the ligand.
ポリ/モノ	ポリクローナル
アイソタイプ	IgG

アプリケーション

The Abpromise guarantee

Abpromise保証は、 次のテスト済みアプリケーションにおけるab1227の使用に適用されます

アプリケーションノートには、推奨の開始希釈率がありますが、適切な希釈率につきましてはご確認ください。

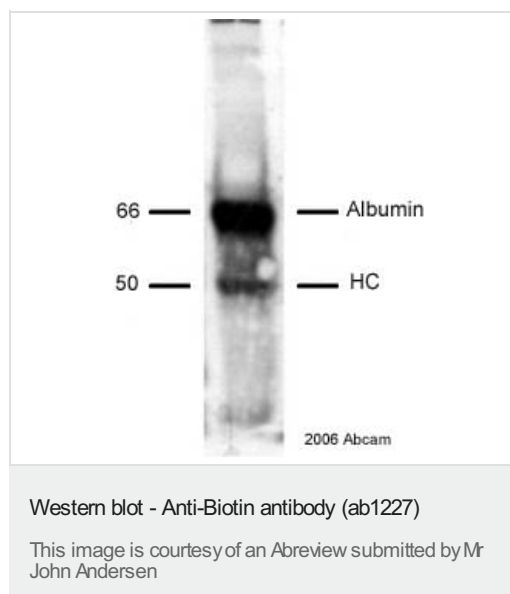
アプリケーション	Abreviews	特記事項
ICC/IF	★★★★★ (2)	1/200 - 1/2000.
WB	★★★★★ (3)	1/1000 - 1/30000.
IHC		1/200 - 1/2000.
ELISA		1/100 - 1/1000. (Coating). For primary: 1/1000 - 1/30,000.
IP	★★★★★ (2)	Use at an assay dependent concentration.

ターゲット情報

関連性

Biotin is a water soluble vitamin, generally classified as a B complex vitamin, also called vitamin B4. After the initial discovery of biotin, nearly forty years of research were required to establish it as a vitamin. Biotin is required by all organisms but can only be synthesized by bacteria, yeasts, molds, algae, and some plant species. Biotin is required as prosthetic group of enzymes involved in incorporation of carbon dioxide into organic compounds. Biotin has a MW of 244 Da.

画像



Anti-Biotin antibody (ab1227) at 1/10000 dilution + 50ug biotinylated human Ovarian tissue.

Secondary

Streptavidin-HRP

Developed using the ECL technique.

Performed under reducing conditions.

Exposure time: 10 seconds

Please note: All products are "FOR RESEARCH USE ONLY. NOT FOR USE IN DIAGNOSTIC PROCEDURES"

Our Abpromise to you: Quality guaranteed and expert technical support

- Replacement or refund for products not performing as stated on the datasheet
- Valid for 12 months from date of delivery
- Response to your inquiry within 24 hours

- We provide support in Chinese, English, French, German, Japanese and Spanish
- Extensive multi-media technical resources to help you
- We investigate all quality concerns to ensure our products perform to the highest standards

If the product does not perform as described on this datasheet, we will offer a refund or replacement. For full details of the Abpromise, please visit <https://www.abcam.co.jp/abpromise> or contact our technical team.

Terms and conditions

- Guarantee only valid for products bought direct from Abcam or one of our authorized distributors