

Anti-Biglycan antibody [EPR2959] ab109369

リコンビナント **RabMAb**

★☆☆☆☆ **1 Abreviews** **2 References** 画像数 3

製品の概要

製品名	Anti-Biglycan antibody [EPR2959]
製品の詳細	Rabbit monoclonal [EPR2959] to Biglycan
由来種	Rabbit
アプリケーション	適用あり: Flow Cyt (Intra), WB 適用なし: ICC/IF or IHC-P
種交差性	交差種: Mouse, Rat, Human
免疫原	Synthetic peptide. This information is proprietary to Abcam and/or its suppliers.
ポジティブ・コントロール	Rat cartilage, C2C12, Human skeletal muscle and Mouse muscle lysates; L6 cells.
特記事項	This product is a recombinant monoclonal antibody, which offers several advantages including: <ul style="list-style-type: none"> - High batch-to-batch consistency and reproducibility - Improved sensitivity and specificity - Long-term security of supply - Animal-free production For more information see here . Our RabMAb [®] technology is a patented hybridoma-based technology for making rabbit monoclonal antibodies. For details on our patents, please refer to RabMAb[®] patents .

製品の特性

製品の状態	Liquid
保存方法	Shipped at 4°C. Store at -20°C. Stable for 12 months at -20°C.
バッファー	pH: 7.20 Preservative: 0.05% Sodium azide Constituents: 0.1% BSA, 40% Glycerol (glycerin, glycerine), 9.85% Tris glycine, 50% Tissue culture supernatant
精製度	Protein A purified
ポリ/モノ	モノクローナル
クローン名	EPR2959
アイソタイプ	IgG

アプリケーション

The Abpromise guarantee Abpromise保証は、 次のテスト済みアプリケーションにおけるab109369の使用に適用されます
アプリケーションノートには、推奨の開始希釈率がありますが、適切な希釈率につきましてはご検討ください。

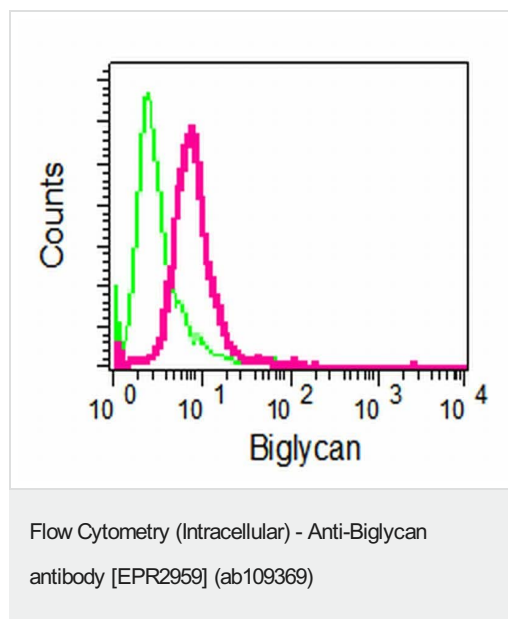
アプリケーション	Abreviews	特記事項
Flow Cyt (Intra)		1/100 - 1/500. ab172730 - Rabbit monoclonal IgG, is suitable for use as an isotype control with this antibody.
WB		1/1000 - 1/10000. Predicted molecular weight: 42 kDa.

追加情報 Is unsuitable for ICC/IF or IHC-P.

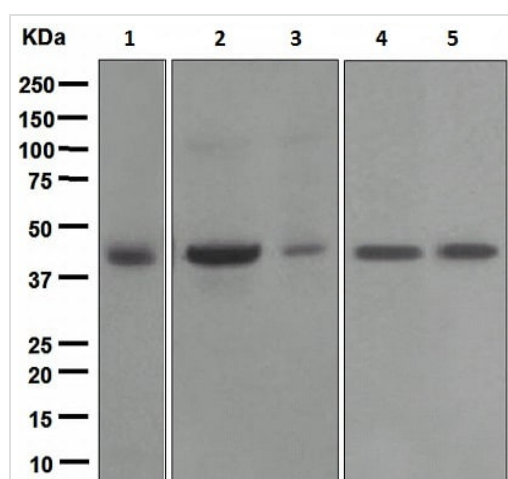
ターゲット情報

機能	May be involved in collagen fiber assembly.
組織特異性	Found in several connective tissues, especially in articular cartilages.
配列類似性	Belongs to the small leucine-rich proteoglycan (SLRP) family. SLRP class I subfamily. Contains 12 LRR (leucine-rich) repeats.
翻訳後修飾	The two attached glycosaminoglycan chains can be either chondroitin sulfate or dermatan sulfate.
細胞内局在	Secreted > extracellular space > extracellular matrix.

画像



Intracellular flow cytometric analysis of permeabilized L6 cells using ab109369 at 1/100 dilution (red) or a rabbit IgG (negative) (green).



Western blot - Anti-Biglycan antibody [EPR2959]
(ab109369)

All lanes : Anti-Biglycan antibody [EPR2959] (ab109369) at 1/1000 dilution

Lane 1 : Rat cartilage lysate

Lane 2 : L6 lysate

Lane 3 : C2C12 lysate

Lane 4 : Human skeletal muscle lysate

Lane 5 : Mouse muscle lysate

Lysates/proteins at 10 µg per lane.

Secondary

All lanes : HRP labelled Goat anti-Rabbit at 1/2000 dilution

Predicted band size: 42 kDa

Why choose a recombinant antibody?



Research with confidence
Consistent and reproducible results



Long-term and scalable supply
Recombinant technology



Success from the first experiment
Confirmed specificity



Ethical standards compliant
Animal-free production

Anti-Biglycan antibody [EPR2959] (ab109369)

Please note: All products are "FOR RESEARCH USE ONLY. NOT FOR USE IN DIAGNOSTIC PROCEDURES"

Our Abpromise to you: Quality guaranteed and expert technical support

- Replacement or refund for products not performing as stated on the datasheet
- Valid for 12 months from date of delivery
- Response to your inquiry within 24 hours
- We provide support in Chinese, English, French, German, Japanese and Spanish
- Extensive multi-media technical resources to help you

- We investigate all quality concerns to ensure our products perform to the highest standards

If the product does not perform as described on this datasheet, we will offer a refund or replacement. For full details of the Abpromise, please visit <https://www.abcam.co.jp/abpromise> or contact our technical team.

Terms and conditions

- Guarantee only valid for products bought direct from Abcam or one of our authorized distributors