

Anti-beta Tubulin antibody ab15568

★★★★★ **6 Abreviews** **85 References** 画像数 5

製品の概要

製品名	Anti-beta Tubulin antibody
製品の詳細	Rabbit polyclonal to beta Tubulin
由来種	Rabbit
特異性	Homology with Tubulin beta chain and Tubulin beta-3 chain
アプリケーション	適用あり: ICC/IF, IHC-P, WB
種交差性	交差種: Human 交差が予測される動物種: Mouse, Rat, Chicken, Guinea pig, Cow, Dog, Pig, Saccharomyces cerevisiae, Xenopus laevis, Chimpanzee, Sea urchin, Fungi, Rice, Xenopus tropicalis 
免疫原	Synthetic peptide within Human beta Tubulin aa 400 to the C-terminus. The exact sequence is proprietary. Database link: Q13509
特記事項	<p>This product is FOR RESEARCH USE ONLY. For commercial use, please contact partnerships@abcam.com.</p> <p>The Life Science industry has been in the grips of a reproducibility crisis for a number of years. Abcam is leading the way in addressing this with our range of recombinant monoclonal antibodies and knockout edited cell lines for gold-standard validation. Please check that this product meets your needs before purchasing.</p> <p>If you have any questions, special requirements or concerns, please send us an inquiry and/or contact our Support team ahead of purchase. Recommended alternatives for this product can be found below, along with publications, customer reviews and Q&As</p>

製品の特性

製品の状態	Liquid
保存方法	Shipped at 4°C. Upon delivery aliquot and store at -20°C. Avoid freeze / thaw cycles.
バッファー	pH: 7.60 Preservative: 0.1% Sodium azide Constituents: PBS, 1% BSA
精製度	Immunogen affinity purified
ポリ/モノ	ポリクローナル

アプリケーション

The Abpromise guarantee **Abpromise保証は、**次のテスト済みアプリケーションにおけるab15568の使用に適用されます
アプリケーションノートには、推奨の開始希釈率がありますが、適切な希釈率につきましてはご検討ください。

アプリケーション	Abreviews	特記事項
ICC/IF	★★★★★ (1)	Use a concentration of 1 µg/ml.
IHC-P	★★★★★ (2)	1/200. Antigen retrieval is not essential but may optimise staining.
WB	★★★★★ (3)	Use at an assay dependent concentration. Predicted molecular weight: 55 kDa.

ターゲット情報

機能	Tubulin is the major constituent of microtubules. It binds two moles of GTP, one at an exchangeable site on the beta chain and one at a non-exchangeable site on the alpha chain.
組織特異性	Ubiquitously expressed with highest levels in spleen, thymus and immature brain.
関連疾患	Cortical dysplasia, complex, with other brain malformations 6 Skin creases, congenital symmetric circumferential, 1
配列類似性	Belongs to the tubulin family.
ドメイン	The highly acidic C-terminal region may bind cations such as calcium.
翻訳後修飾	Some glutamate residues at the C-terminus are polyglutamylated, resulting in polyglutamate chains on the gamma-carboxyl group (PubMed:26875866). Polyglutamylation plays a key role in microtubule severing by spastin (SPAST). SPAST preferentially recognizes and acts on microtubules decorated with short polyglutamate tails: severing activity by SPAST increases as the number of glutamates per tubulin rises from one to eight, but decreases beyond this glutamylation threshold (PubMed:26875866). Some glutamate residues at the C-terminus are monoglycylated but not polyglycylated due to the absence of functional TTL10 in human. Monoglycylation is mainly limited to tubulin incorporated into axonemes (cilia and flagella). Both polyglutamylation and monoglycylation can coexist on the same protein on adjacent residues, and lowering glycylation levels increases polyglutamylation, and reciprocally. The precise function of monoglycylation is still unclear. Phosphorylated on Ser-172 by CDK1 during the cell cycle, from metaphase to telophase, but not in interphase. This phosphorylation inhibits tubulin incorporation into microtubules.
細胞内局在	Cytoplasm, cytoskeleton.

画像



Western blot - Anti-beta Tubulin antibody (ab15568)

All lanes : Anti-beta Tubulin antibody (ab15568) at 1 µg/ml

Lane 1 : Human brain tissue lysate - total protein ([ab29466](#))

Lane 2 : U2OS (Human osteosarcoma cell line) Whole Cell Lysate

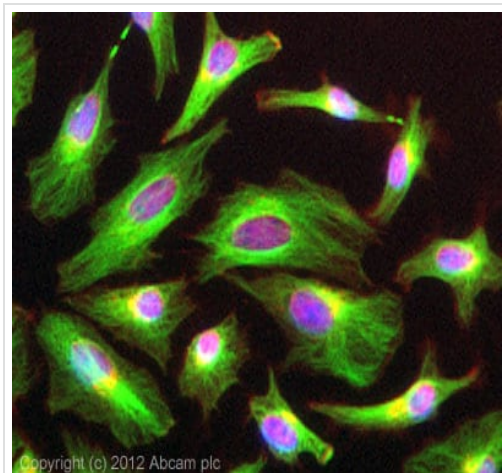
Lysates/proteins at 10 µg per lane.

Secondary

All lanes : Goat polyclonal to Rabbit IgG - H&L - Pre-Adsorbed (HRP) at 1/3000 dilution

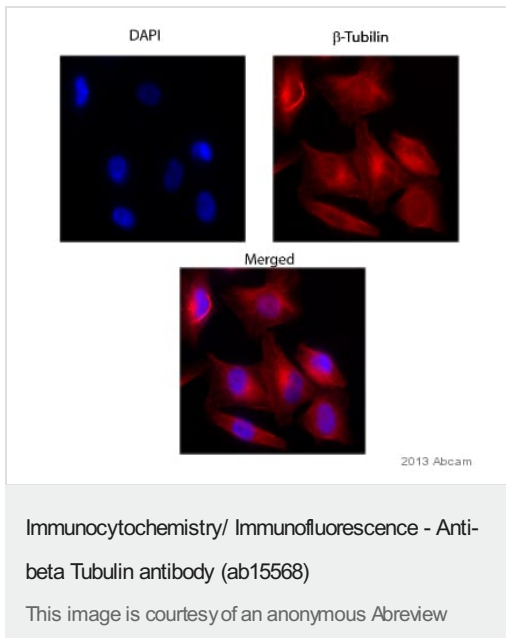
Predicted band size: 55 kDa

Observed band size: 55 kDa

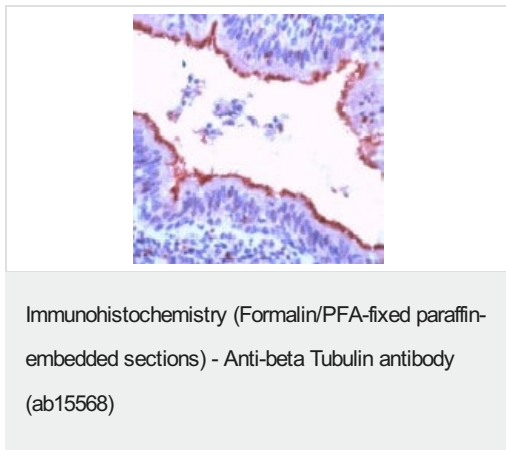


Immunocytochemistry/ Immunofluorescence - Anti-beta Tubulin antibody (ab15568)

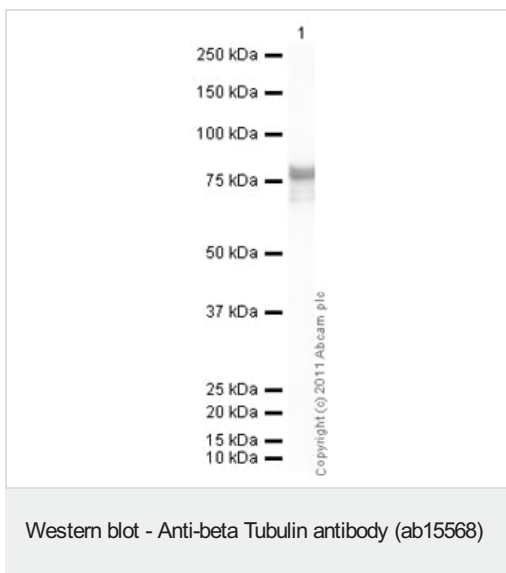
ICC/IF image of ab15568 stained HeLa cells. The cells were 4% formaldehyde fixed (10 min) and then incubated in 1%BSA / 10% normal goat serum / 0.3M glycine in 0.1% PBS-Tween for 1h to permeabilise the cells and block non-specific protein-protein interactions. The cells were then incubated with the antibody (ab15568, 1µg/ml) overnight at +4°C. The secondary antibody (green) was [ab96899](#), DyLight® 488 goat anti-rabbit IgG (H+L) used at a 1/250 dilution for 1h. Alexa Fluor® 594 WGA was used to label plasma membranes (red) at a 1/200 dilution for 1h. DAPI was used to stain the cell nuclei (blue) at a concentration of 1.43µM.



ab15568 staining beta Tubulin in IMR32 Human neuroblastoma cells by ICC/IF (Immunocytochemistry/immunofluorescence). Cells were fixed with paraformaldehyde, permeabilized with 0.3% Triton X-100 and blocked with 1% BSA for 1 hour at 25°C. Samples were incubated with primary antibody (1/100 in 1% BSA containing TBST) for 16 hours at 4°C. A Cy3®-conjugated Goat anti-rabbit IgG polyclonal (1:1000) was used as the secondary antibody. Blue - nuclei (DAPI).



ab15568 staining beta Tubulin in Human lung by Immunohistochemistry (FFPE-sections).



Please note: All products are "FOR RESEARCH USE ONLY. NOT FOR USE IN DIAGNOSTIC PROCEDURES"

Our Abpromise to you: Quality guaranteed and expert technical support

- Replacement or refund for products not performing as stated on the datasheet
- Valid for 12 months from date of delivery
- Response to your inquiry within 24 hours
- We provide support in Chinese, English, French, German, Japanese and Spanish
- Extensive multi-media technical resources to help you
- We investigate all quality concerns to ensure our products perform to the highest standards

If the product does not perform as described on this datasheet, we will offer a refund or replacement. For full details of the Abpromise, please visit <https://www.abcam.co.jp/abpromise> or contact our technical team.

Terms and conditions

- Guarantee only valid for products bought direct from Abcam or one of our authorized distributors