

Anti-beta Galactosidase antibody [DC1 4C7] ab1116

7 References [画像数 1](#)

製品の概要

製品名	Anti-beta Galactosidase antibody [DC1 4C7]
製品の詳細	Mouse monoclonal [DC1 4C7] to beta Galactosidase
由来種	Mouse
アプリケーション	適用あり: WB, ELISA
種交差性	交差種: Escherichia coli
免疫原	Full length protein. This information is proprietary to Abcam and/or its suppliers.
特記事項	<p>This monoclonal is also known as clone HD4C7 or HD 447C.</p> <p>This antibody clone is manufactured by Abcam. If you require a custom buffer formulation or conjugation for your experiments, please contact orders@abcam.com.</p> <p>The Life Science industry has been in the grips of a reproducibility crisis for a number of years. Abcam is leading the way in addressing this with our range of recombinant monoclonal antibodies and knockout edited cell lines for gold-standard validation. Please check that this product meets your needs before purchasing.</p> <p>If you have any questions, special requirements or concerns, please send us an inquiry and/or contact our Support team ahead of purchase. Recommended alternatives for this product can be found below, along with publications, customer reviews and Q&As</p>

製品の特性

製品の状態	Liquid
保存方法	Shipped at 4°C. Store at +4°C short term (1-2 weeks). Upon delivery aliquot. Store at -20°C or -80°C. Avoid freeze / thaw cycle.
バッファー	<p>pH: 7.40</p> <p>Preservative: 0.02% Sodium azide</p> <p>Constituents: PBS, 6.97% L-Arginine</p>
精製度	Protein G purified
ポリ/モノ	モノクローナル
クローン名	DC1 4C7
ミエローマ	P3-NS1/1-Ag4-1
アイソタイプ	IgG1

軽鎖の種類

kappa

アプリケーション

The Abpromise guarantee

Abpromise保証は、次のテスト済みアプリケーションにおけるab116の使用に適用されます

アプリケーションノートには、推奨の開始希釈率がありますが、適切な希釈率につきましてはご検討ください。

アプリケーション	Abreviews	特記事項
WB		Use at an assay dependent concentration.
ELISA		Use at an assay dependent concentration.

ターゲット情報

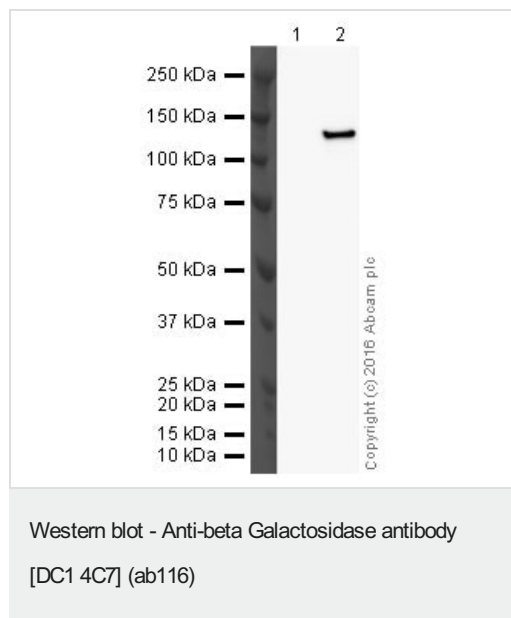
関連性

Beta galactosidase is coded by a gene (lac z) in the lac operon of Escherichia coli. It is a metalloenzyme that splits lactose into glucose and galactose. It hydrolyzes terminal, non-reducing beta-D-galactose residues in beta-D-galactosides. Activation by cations seems to be substrate dependent. K⁺, Na⁺, NH₄⁺, Rb⁺, Cs⁺ and Mn⁺⁺ all activate enzyme activity based upon the substrate used.

細胞内局在

Cytoplasmic

画像



All lanes : Anti-beta Galactosidase antibody [DC1 4C7] (ab116) at 1 µg

Lane 1 : Recombinant Human GLB1/Beta-galactosidase protein ([ab151890](#))

Lane 2 : Native E. coli beta Galactosidase protein ([ab79449](#))

Lysates/proteins at 0.1 µg per lane.

Secondary

All lanes : Goat polyclonal to Mouse IgG - H&L - Pre-Adsorbed (HRP) ([ab65485](#)) at 1/5000 dilution

Performed under reducing conditions.

Exposure time: 4 minutes

Please note: All products are "FOR RESEARCH USE ONLY. NOT FOR USE IN DIAGNOSTIC PROCEDURES"

Our Abpromise to you: Quality guaranteed and expert technical support

- Replacement or refund for products not performing as stated on the datasheet
- Valid for 12 months from date of delivery
- Response to your inquiry within 24 hours

- We provide support in Chinese, English, French, German, Japanese and Spanish
- Extensive multi-media technical resources to help you
- We investigate all quality concerns to ensure our products perform to the highest standards

If the product does not perform as described on this datasheet, we will offer a refund or replacement. For full details of the Abpromise, please visit <https://www.abcam.co.jp/abpromise> or contact our technical team.

Terms and conditions

- Guarantee only valid for products bought direct from Abcam or one of our authorized distributors