

### Anti-beta Galactosidase antibody ab616

★★★★★ [30 Abreviews](#) [116 References](#) [画像数 1](#)

#### 製品の概要

製品名	Anti-beta Galactosidase antibody
製品の詳細	Rabbit polyclonal to beta Galactosidase
由来種	Rabbit
アプリケーション	<b>適用あり:</b> WB <b>適用なし:</b> ICC/IF, IHC-Fr or IHC-P
種交差性	<b>交差種:</b> Escherichia coli
免疫原	Full length native protein (purified) corresponding to beta Galactosidase. Full length native Beta Galactosidase isolated from E.coli
特記事項	<p><b>Application Note:</b> This antibody shows inconsistent results between batches in ICC/IF, IF, IHC-P, IHC-Fr and IHC-FoFr. We have received several good Abreviews on these applications, however, we are unable to guarantee positive results. If the antibody is used for IHC, please try fixing with methanol and block with gelatine instead with BSA or NGS. After each antibody incubation, please wash 5x with TBS instead of PBS. We would recommend <a href="#">ab4761</a> or <a href="#">ab12081</a> as alternatives.</p> <p>The Life Science industry has been in the grips of a reproducibility crisis for a number of years. Abcam is leading the way in addressing this with our range of recombinant monoclonal antibodies and knockout edited cell lines for gold-standard validation. Please check that this product meets your needs before purchasing.</p> <p>If you have any questions, special requirements or concerns, please send us an inquiry and/or contact our Support team ahead of purchase. Recommended alternatives for this product can be found below, along with publications, customer reviews and Q&amp;As</p>

#### 製品の特性

製品の状態	Liquid
保存方法	Shipped at 4°C. Store at +4°C short term (1-2 weeks). Upon delivery aliquot. Store at -20°C or -80°C. Avoid freeze / thaw cycle.
バッファー	Preservative: 0.01% Sodium azide Constituents: 0.42% Potassium phosphate, 0.87% Sodium chloride, 1% BSA
精製度	IgG fraction
特記事項 (精製)	IgG fraction purified from monospecific antiserum by a multi-step process of delipidation, salt

fractionation, ion exchange chromatography and dialysis.

ポリ/モノ

ポリクローナル

アイソタイプ

IgG

## アプリケーション

### The Abpromise guarantee

**Abpromise保証は、**次のテスト済みアプリケーションにおけるab616の使用に適用されます

アプリケーションノートには、推奨の開始希釈率がありますが、適切な希釈率につきましてはご確認ください。

アプリケーション	Abreviews	特記事項
WB	★★★★★ (8)	1/5000 - 1/10000. Detects a band of approximately 116 kDa. This antibody shows inconsistent results between batches in ICC/IF, IHC-P, IHC-Fr and IHC-FoFr. We have received several good Abreviews on these applications, however, we are unable to guarantee positive results. If the antibody is used for IHC, please try fixing with methanol and block with gelatine instead with BSA or NGS. After each antibody incubation, please wash

### 追加情報

Is unsuitable for ICC/IF, IHC-Fr or IHC-P.

## ターゲット情報

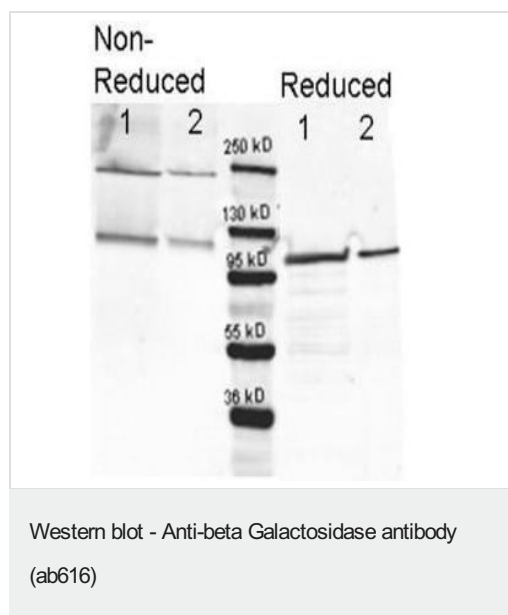
### 関連性

Beta galactosidase is coded by a gene (lac z) in the lac operon of Escherichia coli. It is a metalloenzyme that splits lactose into glucose and galactose. It hydrolyzes terminal, non-reducing beta-D-galactose residues in beta-D-galactosides. Activation by cations seems to be substrate dependent. K<sup>+</sup>, Na<sup>+</sup>, NH<sub>4</sub><sup>+</sup>, Rb<sup>+</sup>, Cs<sup>+</sup> and Mn<sup>++</sup> all activate enzyme activity based upon the substrate used.

### 細胞内局在

Cytoplasmic

## 画像



**All lanes :** Anti-beta Galactosidase antibody (ab616)

**Lanes 1-2 :** Non-reduced purified recombinant beta Galactosidase protein

**Lanes 3-4 :** reduced purified recombinant beta Galactosidase protein

Western blotting using ab616. Lane 1 shows 80 ng and lane 2 shows 20 ng loaded onto gel. Results for non-reducing conditions of SDS-PAGE prior to transfer to nitrocellulose are shown on the left side of the figure; results obtained under reducing conditions are shown on the right. The membrane was probed with ab616 at 1/10,000 dilution.

**Please note:** All products are "FOR RESEARCH USE ONLY. NOT FOR USE IN DIAGNOSTIC PROCEDURES"

### **Our Abpromise to you: Quality guaranteed and expert technical support**

---

- Replacement or refund for products not performing as stated on the datasheet
- Valid for 12 months from date of delivery
- Response to your inquiry within 24 hours
- We provide support in Chinese, English, French, German, Japanese and Spanish
- Extensive multi-media technical resources to help you
- We investigate all quality concerns to ensure our products perform to the highest standards

If the product does not perform as described on this datasheet, we will offer a refund or replacement. For full details of the Abpromise, please visit <https://www.abcam.co.jp/abpromise> or contact our technical team.

### **Terms and conditions**

---

- Guarantee only valid for products bought direct from Abcam or one of our authorized distributors