


# Anti-beta Actin antibody [mAbcam 8226] - Loading Control ab8226

★★★★★ [136 Abreviews](#) [2899 References](#) [画像数 7](#)

### 製品の概要

|              |   |
|--------------|---|
| 製品名          | Anti-beta Actin antibody [mAbcam 8226] - Loading Control  |
| 製品の詳細        | Mouse monoclonal [mAbcam 8226] to beta Actin - Loading Control  |
| 由来種          | Mouse   |
| 特異性          | Does not cross-react with adult cardiac, smooth, or skeletal muscle actin. The immunogen used for this product shares 77% homology with Gamma actin/actin cytoplasmic 2. Cross-reactivity with this protein has not been confirmed experimentally.  |
| アプリケーション     | <b>適用あり:</b> ICC/IF, IHC-P, WB  |
| 種交差性         | <b>交差種:</b> Mouse, Rat, Human<br><b>交差が予測される動物種:</b> Sheep, Rabbit, Horse, Chicken, Guinea pig, Cow, Dog, Pig, Monkey, Zebrafish, African green monkey, Chinese hamster, Armenian hamster    |
| 免疫原          | Synthetic peptide. This information is proprietary to Abcam and/or its suppliers.<br>(Peptide available as <a href="#">ab13772</a> )  |
| ポジティブ・コントロール | WB, ICC/IF: HeLa, Jurkat, A431, HEK293, NIH 3T3, PC12 cells. IHC-P: Human colon (FFPE), Rat colon (FFPE) tissue. Hela cells   |
| 特記事項         | <p><b><u>Western blot protocol advice:</u></b></p> <p><b>We recommend blocking with 2-5% BSA as we have found that use of 5% milk significantly reduces the band intensity for beta actin.</b> Please see the comparison data in the images section. If milk block is required, we recommend using <a href="#">ab8224</a> mouse monoclonal [mAbcam 8224] to beta actin. Contact our Scientific Support team for more information or advice.</p> <p>This antibody clone [mAbcam 8226] is manufactured by Abcam.</p> <p>If you require this antibody in a particular buffer formulation or a particular conjugate for your experiments, please contact <a href="mailto:orders@abcam.com">orders@abcam.com</a> or you can find further information <a href="#">here</a>.</p> <p>The Life Science industry has been in the grips of a reproducibility crisis for a number of years. Abcam is leading the way in addressing this with our range of recombinant monoclonal antibodies and knockout edited cell lines for gold-standard validation. Please check that this product meets your needs before purchasing.</p> <p>If you have any questions, special requirements or concerns, please send us an inquiry and/or contact our Support team ahead of purchase. Recommended alternatives for this product can be found below, along with publications, customer reviews and Q&amp;As</p> |

## 製品の特性

|        |  |
|--------|--|
| 製品の状態  | Liquid   |
| 保存方法   | Shipped at 4°C. Store at +4°C short term (1-2 weeks). Upon delivery aliquot. Store at -20°C or -80°C. Avoid freeze / thaw cycle. |
| バッファー  | pH: 7.40<br>Preservative: 0.02% Sodium azide<br>Constituents: PBS, 6.97% L-Arginine  |
| 精製度    | Protein G purified   |
| ポリ/モノ  | モノクローナル  |
| クローン名  | mAbcam 8226  |
| ミエローマ  | Sp2/0-Ag14   |
| アイソタイプ | IgG1   |
| 軽鎖の種類  | kappa  |

## アプリケーション

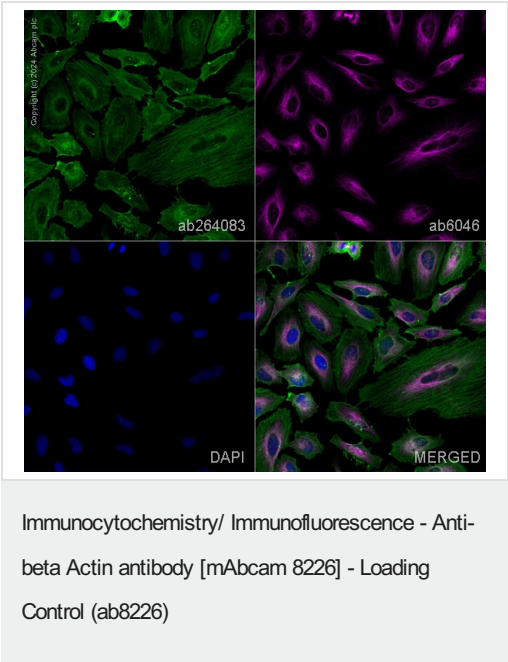
**The Abpromise guarantee**      **Abpromise保証は、次のテスト済みアプリケーションにおけるab8226の使用に適用されます**  
 アプリケーションノートには、推奨の開始希釈率がありますが、適切な希釈率につきましてはご検討ください。

| アプリケーション | Abreviews   | 特記事項  |
|----------|-------------|---|
| ICC/IF   | ★★★★★ (17)  | Use a concentration of 5 µg/ml.   |
| IHC-P    | ★★★★★ (1)   | Use a concentration of 0.1 - 0.5 µg/ml. Perform heat mediated antigen retrieval with citrate buffer pH 6 before commencing with IHC staining protocol.  |
| WB       | ★★★★★ (100) | Use a concentration of 1 µg/ml. Predicted molecular weight: 42 kDa. Can be blocked with <b>Human beta Actin peptide (ab13772)</b> .<br><b>We recommend blocking using 2-5% BSA as we have found that use of 5% milk significantly reduces the band intensity for beta actin.</b> Please refer to the images section for the blocking comparison data. |

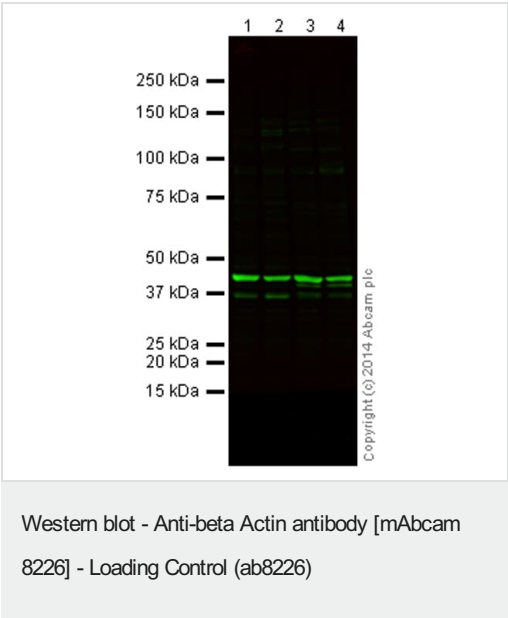
## ターゲット情報

|       |   |
|-------|---|
| 機能    | Actins are highly conserved proteins that are involved in various types of cell motility and are ubiquitously expressed in all eukaryotic cells.  |
| 関連疾患  | Defects in ACTB are a cause of dystonia juvenile-onset (DYTJ) [MIM:607371]. DYTJ is a form of dystonia with juvenile onset. Dystonia is defined by the presence of sustained involuntary muscle contraction, often leading to abnormal postures. DYTJ patients manifest progressive, generalized, dopa-unresponsive dystonia, developmental malformations and sensory hearing loss. |
| 配列類似性 | Belongs to the actin family.  |
| 翻訳後修飾 | ISGylated.  |

画像



This data was developed using the same antibody clone in a different buffer formulation containing only PBS (**ab264083**). **ab264083** staining beta Actin in HeLa cells. The cells were fixed with 100% methanol (5 min), permeabilized with 0.1% PBS-Triton X-100 for 5 minutes and then blocked with 1% BSA/10% normal goat serum/0.3M glycine in 0.1%PBS-Tween for 1h. The cells were then incubated overnight at 4°C with **ab264083** at 5µg/ml and **ab6046**, Rabbit polyclonal to beta Tubulin - Loading Control. Cells were then incubated with **ab150117**, Goat polyclonal Secondary Antibody to Mouse IgG H&L (Alexa Fluor® 488) preadsorbed at 1/1000 dilution (shown in green) and **ab150080**, Goat polyclonal Secondary Antibody to Rabbit IgG - H&L (Alexa Fluor® 594) at 1/1000 dilution (shown in pseudocolour magenta). Nuclear DNA was labelled with DAPI (shown in blue). Image was acquired with a high-content analyser (Operetta CLS, Perkin Elmer) and a maximum intensity projection of confocal sections is shown.



**All lanes** : Anti-beta Actin antibody [mAbcam 8226] - Loading Control (ab8226) at 1/1000 dilution

**Lane 1** : A431 (Human epidermoid carcinoma cell line) Whole Cell Lysate

**Lane 2** : HEK293 (Human embryonic kidney cell line) Whole Cell Lysate

**Lane 3** : NIH 3T3 (Mouse embryo fibroblast cell line) Whole Cell Lysate

**Lane 4** : PC12 (Rat adrenal gland pheochromocytoma cell line) Whole Cell Lysate

Lysates/proteins at 20 µg per lane.

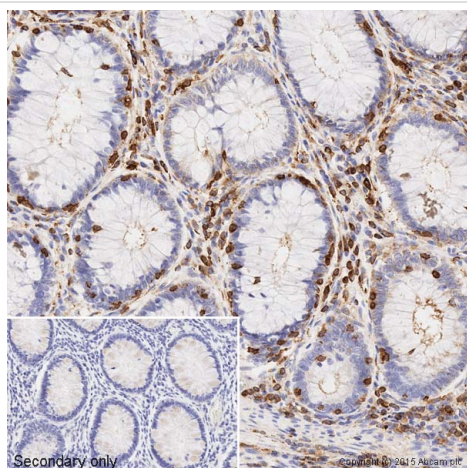
**Secondary**

**All lanes** : Goat Anti-Mouse IgG H&L (Alexa Fluor® 790) (**ab175783**) at 1/10000 dilution

**Predicted band size:** 42 kDa

**Observed band size:** 42 kDa

This blot was produced using a 4-12% Bis-tris gel under the MOPS buffer system. The gel was run at 200V for 50 minutes before being transferred onto a Nitrocellulose membrane at 30V for 70 minutes. The membrane was then blocked for an hour using 5% Milk before being incubated with ab8226 overnight at 4°C. Antibody binding was detected using **Goat Anti-Mouse IgG H&L (Alexa Fluor® 790) (ab175783)** at a 1:10,000 dilution for 1hr at room temperature and then imaged using the Licor Odyssey CLx.

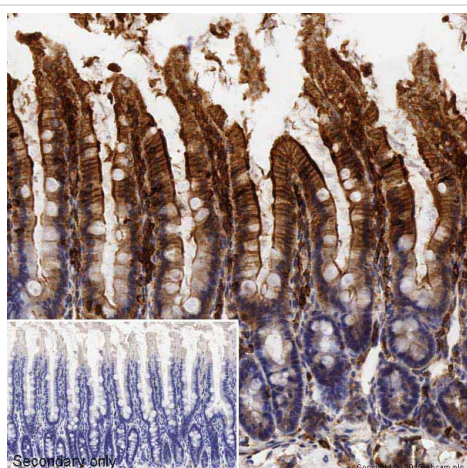


Immunohistochemistry (Formalin/PFA-fixed paraffin-embedded sections) - Anti-beta Actin antibody [mAbcam 8226] - Loading Control (ab8226)

IHC image of ab8226 staining beta Actin in human colon formalin fixed paraffin embedded tissue sections\*, performed on a Leica Bond. The section was pre-treated using heat mediated antigen retrieval with sodium citrate buffer (pH6, epitope retrieval solution 1) for 20 mins. The section was then incubated with ab8226, 0.1 µg/ml working concentration, for 15 mins at room temperature and detected using an HRP conjugated compact polymer system. DAB was used as the chromogen. The section was then counterstained with haematoxylin and mounted with DPX. No primary antibody was used in the secondary only control (shown on the inset).

For other IHC staining systems (automated and non-automated) customers should optimize variable parameters such as antigen retrieval conditions, primary antibody concentration and antibody incubation times.

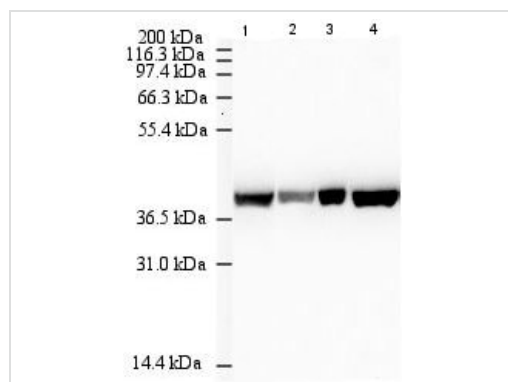
\*Tissue obtained from the Human Research Tissue Bank, supported by the NIHR Cambridge Biomedical Research Centre



Immunohistochemistry (Formalin/PFA-fixed paraffin-embedded sections) - Anti-beta Actin antibody [mAbcam 8226] - Loading Control (ab8226)

IHC image of ab8226 staining beta Actin in rat colon formalin fixed paraffin embedded tissue sections, performed on a Leica Bond. The section was pre-treated using heat mediated antigen retrieval with sodium citrate buffer (pH6, epitope retrieval solution 1) for 20 mins. The section was then incubated with ab8226, 0.5 µg/ml working concentration, for 15 mins at room temperature and detected using an HRP conjugated compact polymer system. DAB was used as the chromogen. The section was then counterstained with haematoxylin and mounted with DPX. No primary antibody was used in the secondary only control (shown on the inset).

For other IHC staining systems (automated and non-automated) customers should optimize variable parameters such as antigen retrieval conditions, primary antibody concentration and antibody incubation times.



Western blot - Anti-beta Actin antibody [mAbcam 8226] - Loading Control (ab8226)

**Lane 1 :** Anti-beta Actin antibody [mAbcam 8226] - Loading

Control (ab8226) at 1/1000 dilution

**Lane 2 :** Anti-beta Actin antibody [mAbcam 8226] - Loading

Control (ab8226) at 1/10000 dilution

**Lanes 3-4 :** Anti-beta Actin antibody [mAbcam 8226] - Loading

Control (ab8226) at 1/500 dilution

**Lanes 1-2 :** HeLa (Human epithelial cell line from cervix

adenocarcinoma) cell lysate

**Lane 3 :** HEK293 (Human epithelial cell line from embryonic

kidney) cell lysate

**Lane 4 :** NIH/3T3 (Mouse embryo fibroblast cell line) cell lysate

Lysates/proteins at 20 µg per lane.

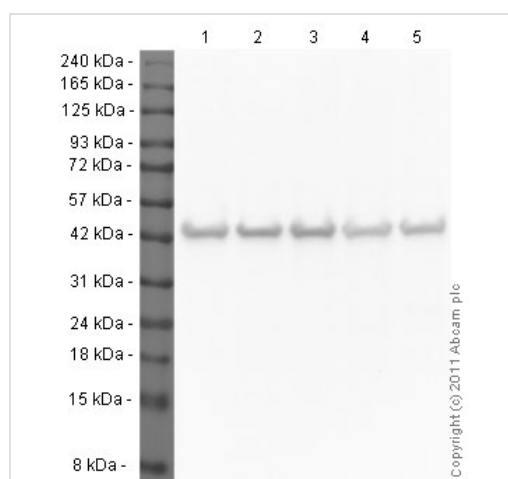
### Secondary

**All lanes :** Rabbit Anti-Mouse IgG H&L (HRP) ([ab6728](#)) at 1/5000 dilution

Performed under reducing conditions.

**Predicted band size:** 42 kDa

**Exposure time:** 10 seconds



Western blot - Anti-beta Actin antibody [mAbcam 8226] - Loading Control (ab8226)

**All lanes :** Anti-beta Actin antibody [mAbcam 8226] - Loading

Control (ab8226) at 1 µg/ml

**Lane 1 :** HeLa (Human epithelial cell line from cervix

adenocarcinoma) whole cell lysate

**Lane 2 :** Jurkat (Human T cell leukemia cell line from peripheral

blood) whole cell lysate

**Lane 3 :** A431 (Human epidermoid carcinoma cell line) whole cell

lysate

**Lane 4 :** HEK293 (Human epithelial cell line from embryonic

kidney) whole cell lysate

**Lane 5 :** HepG2 (Human liver hepatocellular carcinoma cell line)

whole cell lysate

Lysates/proteins at 20 µg per lane.

### Secondary

**All lanes** : HRP-conjugated goat anti-mouse IgG at 1/5000 dilution

Developed using the ECL technique.

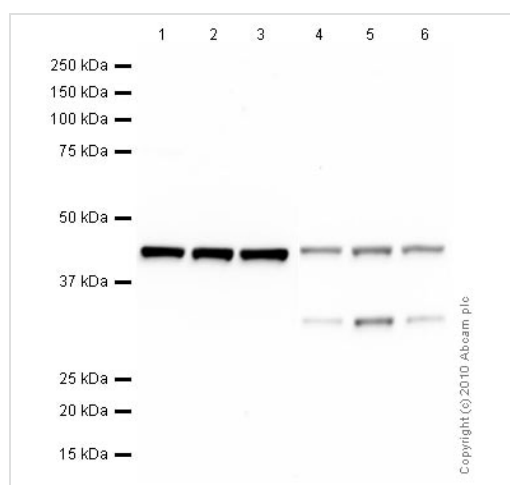
Performed under reducing conditions.

**Predicted band size:** 42 kDa

**Observed band size:** 42 kDa

**Exposure time:** 10 seconds

Western blot image using the Optiblot Reducing Electrophoresis Kit - 10 x 10 cm (4-20%) with the Prism Ultra Protein Ladder ([ab116028](#)) 5µl used. We recommend using our ECL substrate kit ([ab65623](#)).



Western blot - Anti-beta Actin antibody [mAbcam 8226] - Loading Control (ab8226)

**Lanes 1-3** : Anti-beta Actin antibody [mAbcam 8226] - Loading Control (ab8226) at 1 µg/ml (5% BSA BLOCK)

**Lanes 4-6** : Anti-beta Actin antibody [mAbcam 8226] - Loading Control (ab8226) at 1 µg/ml (5% MILK BLOCK)

**Lanes 1 & 4** : HeLa (Human epithelial cell line from cervix adenocarcinoma) whole cell lysate

**Lanes 2 & 5** : Jurkat (Human T cell leukemia cell line from peripheral blood) whole cell lysate

**Lanes 3 & 6** : NIH/3T3 (Mouse embryo fibroblast cell line) whole cell lysate

Lysates/proteins at 10 µg per lane.

### Secondary

**All lanes** : Goat polyclonal to Mouse IgG - H&L - Pre-Adsorbed (HRP) at 1/3000 dilution

Performed under reducing conditions.

**Predicted band size:** 42 kDa

**Observed band size:** 42 kDa

**Exposure time:** 8 minutes

**Please note:** All products are "FOR RESEARCH USE ONLY. NOT FOR USE IN DIAGNOSTIC PROCEDURES"

### **Our Abpromise to you: Quality guaranteed and expert technical support**

---

- Replacement or refund for products not performing as stated on the datasheet
- Valid for 12 months from date of delivery
- Response to your inquiry within 24 hours
  
- We provide support in Chinese, English, French, German, Japanese and Spanish
- Extensive multi-media technical resources to help you
- We investigate all quality concerns to ensure our products perform to the highest standards

If the product does not perform as described on this datasheet, we will offer a refund or replacement. For full details of the Abpromise, please visit <https://www.abcam.co.jp/abpromise> or contact our technical team.

### **Terms and conditions**

---

- Guarantee only valid for products bought direct from Abcam or one of our authorized distributors