


Anti-beta 2 Microglobulin antibody [rB2M/961] ab234404

リコンビナント

画像数 4

製品の概要

製品名	Anti-beta 2 Microglobulin antibody [rB2M/961]
製品の詳細	Mouse monoclonal [rB2M/961] to beta 2 Microglobulin
由来種	Mouse
アプリケーション	適用あり: Protein Array, IHC-P
種交差性	交差種: Human 交差が予測される動物種: Non human primates 
免疫原	Recombinant full length protein corresponding to Human beta 2 Microglobulin. Database link: P61769
ポジティブ・コントロール	IHC-P: Human lung carcinoma and colon tissues.

製品の特性

製品の状態	Liquid
保存方法	Shipped at 4°C. Store at +4°C short term (1-2 weeks). Upon delivery aliquot. Store at -20°C long term. Avoid freeze / thaw cycle.
バッファー	pH: 7.2 Preservative: 0.05% Sodium azide Constituents: PBS, 0.05% BSA
精製度	Protein A/G purified
特記事項(精製)	Purified from bioreactor concentrate by Protein A/G.
ポリ/モノ	モノクローナル
クローン名	rB2M/961
アイソタイプ	IgG2b
軽鎖の種類	kappa

アプリケーション

The Abpromise guarantee

Abpromise保証は、次のテスト済みアプリケーションにおけるab234404の使用に適用されます

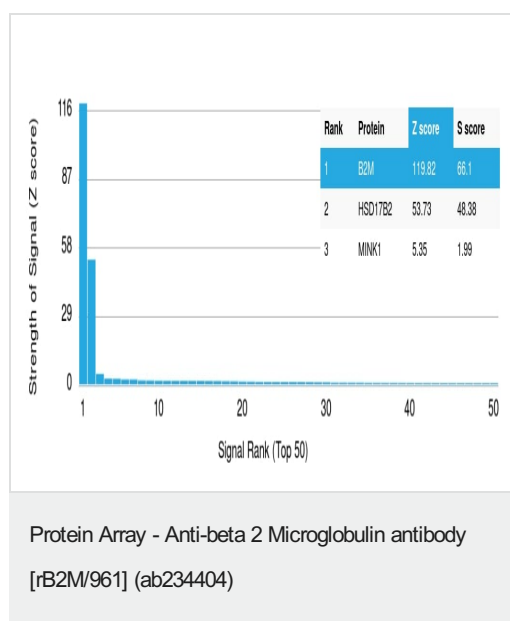
アプリケーションノートには、推奨の開始希釈率がありますが、適切な希釈率につきましてはご確認ください。

アプリケーション	Abreviews	特記事項
Protein Array		Use at an assay dependent concentration.
IHC-P		Use a concentration of 0.5 - 1 µg/ml. Perform heat mediated antigen retrieval with citrate buffer pH 6 before commencing with IHC staining protocol. Incubate with primary antibody for 30 minutes at room temperature.

ターゲット情報

機能	Component of the class I major histocompatibility complex (MHC). Involved in the presentation of peptide antigens to the immune system.
関連疾患	Defects in B2M are the cause of hypercatabolic hypoproteinemia (HYCATHYP) [MIM:241600]. Affected individuals show marked reduction in serum concentrations of immunoglobulin and albumin, probably due to rapid degradation. Note=Beta-2-microglobulin may adopt the fibrillar configuration of amyloid in certain pathologic states. The capacity to assemble into amyloid fibrils is concentration dependent. Persistently high beta(2)-microglobulin serum levels lead to amyloidosis in patients on long-term hemodialysis.
配列類似性	Belongs to the beta-2-microglobulin family. Contains 1 Ig-like C1-type (immunoglobulin-like) domain.
翻訳後修飾	Glycation of Ile-21 is observed in long-term hemodialysis patients.
細胞内局在	Secreted. Detected in serum and urine.

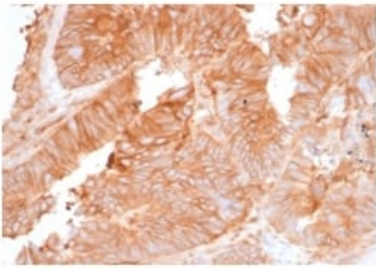
画像



ab234404 was tested in protein array against over 19000 different full-length human proteins.

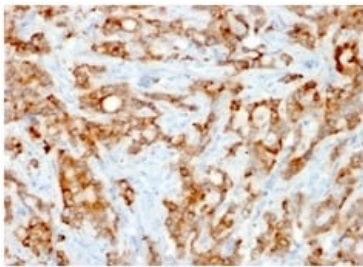
Z- and S- Score: The Z-score represents the strength of a signal that a monoclonal antibody (MAb) (in combination with a fluorescently-tagged anti-IgG secondary antibody) produces when binding to a particular protein on the HuProt™ array. Z-scores are described in units of standard deviations (SD's) above the mean value of all signals generated on that array. If targets on HuProt™ are arranged in descending order of the Z-score, the S-score is the difference (also in units of SD's) between the Z-score. S-score therefore represents the relative target specificity of a MAb to its intended target.

A MAb is specific to its intended target if the MAb has an S-score of at least 2.5. For example, if a MAb binds to protein X with a Z-score of 43 and to protein Y with a Z-score of 14, then the S-score for the binding of that MAb to protein X is equal to 29.



Immunohistochemistry (Formalin/PFA-fixed paraffin-embedded sections) - Anti-beta 2 Microglobulin antibody [rB2M/961] (ab234404)

Formalin-fixed, paraffin-embedded human colon tissue stained for beta 2 Microglobulin with ab234404 at 1 µg/ml in immunohistochemical analysis.



Immunohistochemistry (Formalin/PFA-fixed paraffin-embedded sections) - Anti-beta 2 Microglobulin antibody [rB2M/961] (ab234404)

Formalin-fixed, paraffin-embedded human lung carcinoma tissue stained for beta 2 Microglobulin with ab234404 at 1 µg/ml in immunohistochemical analysis.

Why choose a recombinant antibody?



Research with confidence
Consistent and reproducible results



Long-term and scalable supply
Recombinant technology



Success from the first experiment
Confirmed specificity



Ethical standards compliant
Animal-free production

Anti-beta 2 Microglobulin antibody [rB2M/961] (ab234404)

Please note: All products are "FOR RESEARCH USE ONLY. NOT FOR USE IN DIAGNOSTIC PROCEDURES"

Our Abpromise to you: Quality guaranteed and expert technical support

- Replacement or refund for products not performing as stated on the datasheet

- Valid for 12 months from date of delivery
- Response to your inquiry within 24 hours

- We provide support in Chinese, English, French, German, Japanese and Spanish
- Extensive multi-media technical resources to help you
- We investigate all quality concerns to ensure our products perform to the highest standards

If the product does not perform as described on this datasheet, we will offer a refund or replacement. For full details of the Abpromise, please visit <https://www.abcam.co.jp/abpromise> or contact our technical team.

Terms and conditions

- Guarantee only valid for products bought direct from Abcam or one of our authorized distributors