




Anti-beta 2 Microglobulin antibody [B2M/961] ab215889

画像数 10

製品の概要

製品名	Anti-beta 2 Microglobulin antibody [B2M/961]
製品の詳細	Mouse monoclonal [B2M/961] to beta 2 Microglobulin
由来種	Mouse
アプリケーション	適用あり: WB, Flow Cyt, ICC, IHC-P
種交差性	交差種: Human 交差が予測される動物種: Non human primates 
免疫原	Recombinant full length protein corresponding to Human beta 2 Microglobulin aa 1 to the C-terminus. Database link: P61769  Run BLAST with  Run BLAST with
ポジティブ・コントロール	IHC-P: Human cervical carcinoma, melanoma, endometrial carcinoma, renal carcinoma, bladder carcinoma and colon carcinoma tissues; WB: THP-1 and Raji cell lysates; ICC and Flow Cyt: HeLa cells.
特記事項	<p>The Life Science industry has been in the grips of a reproducibility crisis for a number of years. Abcam is leading the way in addressing this with our range of recombinant monoclonal antibodies and knockout edited cell lines for gold-standard validation. Please check that this product meets your needs before purchasing.</p> <p>If you have any questions, special requirements or concerns, please send us an inquiry and/or contact our Support team ahead of purchase. Recommended alternatives for this product can be found below, along with publications, customer reviews and Q&As</p>

製品の特性

製品の状態	Liquid
保存方法	Shipped at 4°C. Store at +4°C short term (1-2 weeks). Upon delivery aliquot. Store at -20°C long term. Avoid freeze / thaw cycle.
バッファー	pH: 7.2 Preservative: 0.05% Sodium azide Constituents: 99% PBS, 0.05% BSA
精製度	Protein A purified
特記事項 (精製)	ab215889 was purified from Bioreactor Concentrate by Protein A/G.

ポリモノ	モノクローナル
クローン名	B2M/961
アイソタイプ	IgG2b
軽鎖の種類	kappa

アプリケーション

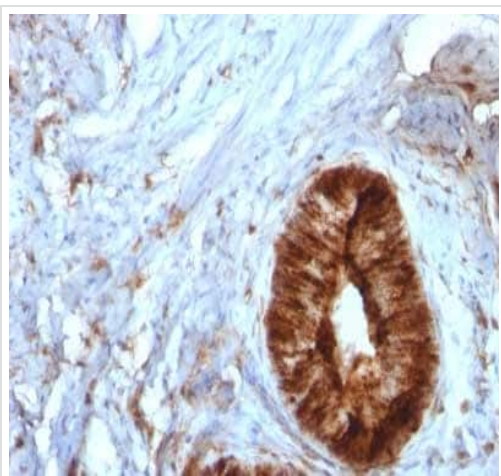
The Abpromise guarantee **Abpromise保証は、次のテスト済みアプリケーションにおけるab215889の使用に適用されず**
 アプリケーションノートには、推奨の開始希釈率がありますが、適切な希釈率につきましてはご確認ください。

アプリケーション	Abreviews	特記事項
WB		Use a concentration of 1 - 2 µg/ml. Predicted molecular weight: 14 kDa.
Flow Cyt		Use 1-2µg for 10 ⁶ cells.
ICC		Use a concentration of 1 - 4 µg/ml.
IHC-P		Use a concentration of 1 - 2 µg/ml. Perform heat mediated antigen retrieval with Tris/EDTA buffer pH 9.0 before commencing with IHC staining protocol. Primary incubation for 30 minutes at room temperature.

ターゲット情報

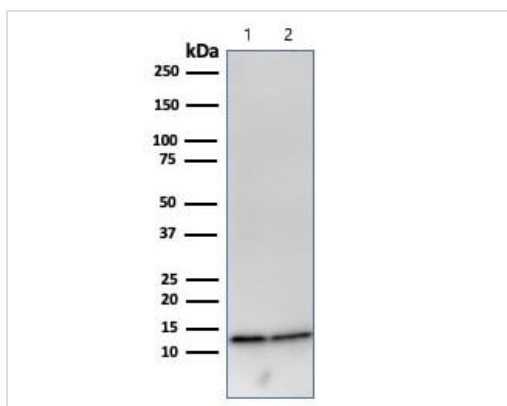
機能	Component of the class I major histocompatibility complex (MHC). Involved in the presentation of peptide antigens to the immune system.
関連疾患	Defects in B2M are the cause of hypercatabolic hypoproteinemia (HYCATHYP) [MIM:241600]. Affected individuals show marked reduction in serum concentrations of immunoglobulin and albumin, probably due to rapid degradation. Note=Beta-2-microglobulin may adopt the fibrillar configuration of amyloid in certain pathologic states. The capacity to assemble into amyloid fibrils is concentration dependent. Persistently high beta(2)-microglobulin serum levels lead to amyloidosis in patients on long-term hemodialysis.
配列類似性	Belongs to the beta-2-microglobulin family. Contains 1 Ig-like C1-type (immunoglobulin-like) domain.
翻訳後修飾	Glycation of Ile-21 is observed in long-term hemodialysis patients.
細胞内局在	Secreted. Detected in serum and urine.

画像



Immunohistochemistry (Formalin/PFA-fixed paraffin-embedded sections) - Anti-beta 2 Microglobulin antibody [B2M/961] (ab215889)

Immunohistochemical analysis of formalin-fixed, paraffin-embedded Human cervical carcinoma tissue labeling beta 2 Microglobulin with ab215889 at 1 µg/ml.



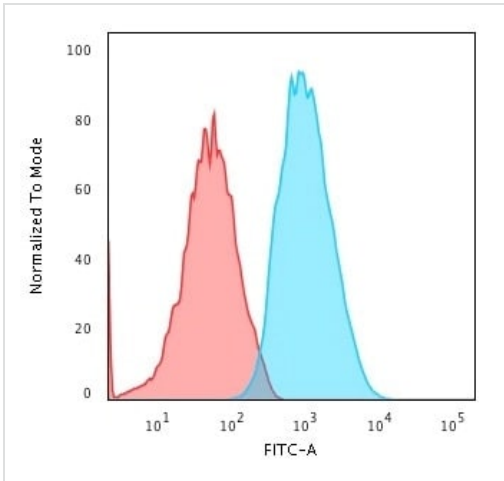
Western blot - Anti-beta 2 Microglobulin antibody [B2M/961] (ab215889)

All lanes : Anti-beta 2 Microglobulin antibody [B2M/961] (ab215889) at 2 µg/ml

Lane 1 : THP-1 (human monocytic leukemia cell line) whole cell lysate

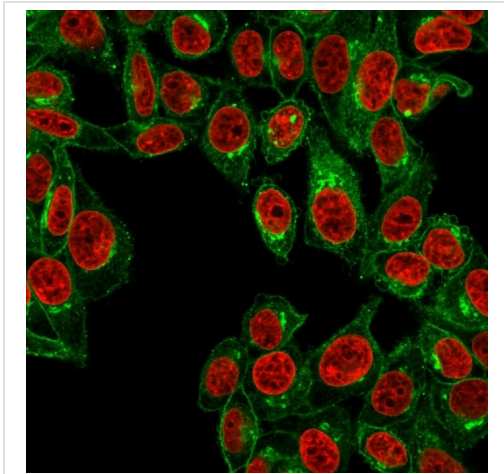
Lane 2 : Raji (human Burkitt's lymphoma cell line) whole cell lysate

Predicted band size: 14 kDa



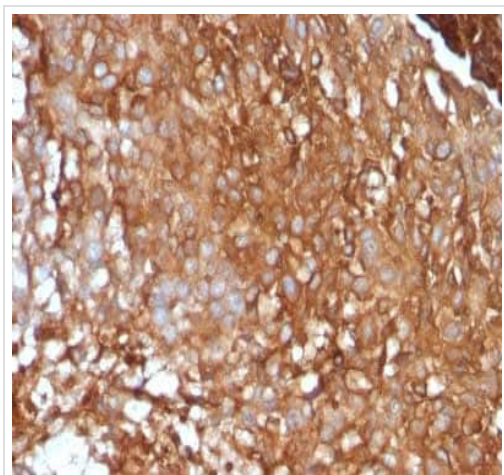
Flow Cytometry - Anti-beta 2 Microglobulin antibody [B2M/961] (ab215889)

Flow Cytometry analysis of HeLa (human epithelial cell line from cervix adenocarcinoma) cells labeling beta 2 Microglobulin with ab215889 at 2 µg/10⁶ cells followed by Goat anti-Mouse IgG-CF488 (Blue); Isotype control (Red).



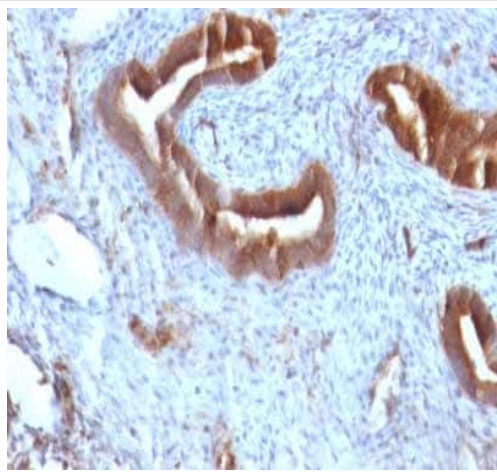
Immunocytochemistry - Anti-beta 2 Microglobulin antibody [B2M/961] (ab215889)

Immunocytochemistry analysis of HeLa (human epithelial cell line from cervix adenocarcinoma) cells labeling beta 2 Microglobulin with ab215889 at 4 µg/mL followed by Goat anti-Mouse IgG-CF488 (Green). The nuclear counterstain is Reddot (Red).



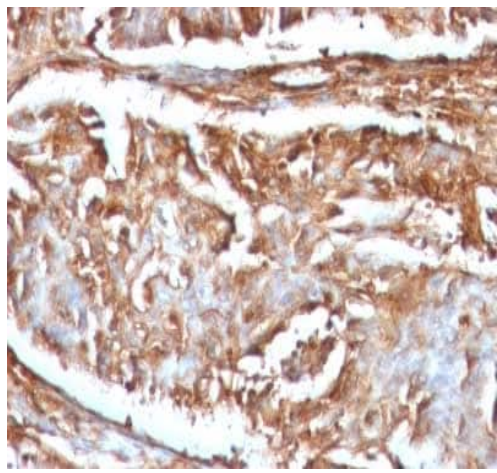
Immunohistochemistry (Formalin/PFA-fixed paraffin-embedded sections) - Anti-beta 2 Microglobulin antibody [B2M/961] (ab215889)

Immunohistochemical analysis of formalin-fixed, paraffin-embedded Human melanoma tissue labeling beta 2 Microglobulin with ab215889 at 1 µg/ml.



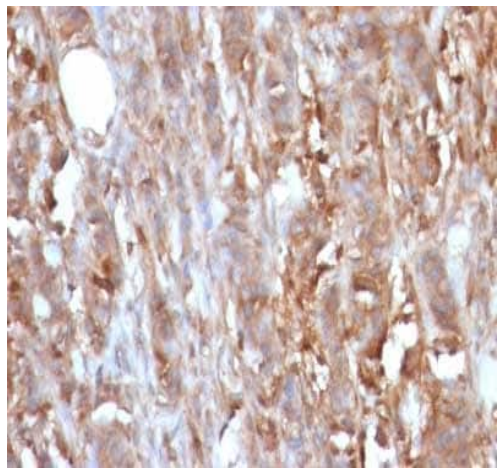
Immunohistochemical analysis of formalin-fixed, paraffin-embedded Human endometrial carcinoma tissue labeling beta 2 Microglobulin with ab215889 at 1 µg/ml.

Immunohistochemistry (Formalin/PFA-fixed paraffin-embedded sections) - Anti-beta 2 Microglobulin antibody [B2M/961] (ab215889)



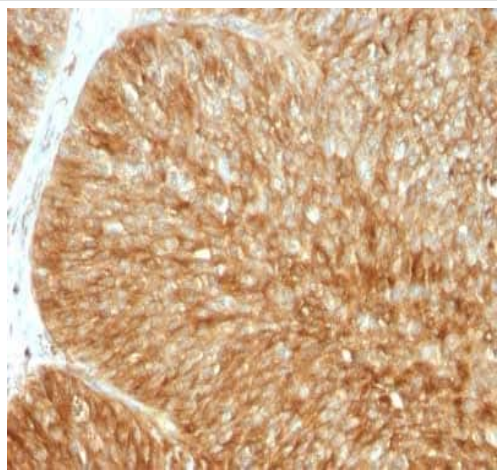
Immunohistochemical analysis of formalin-fixed, paraffin-embedded Human renal carcinoma tissue labeling beta 2 Microglobulin with ab215889 at 1 µg/ml.

Immunohistochemistry (Formalin/PFA-fixed paraffin-embedded sections) - Anti-beta 2 Microglobulin antibody [B2M/961] (ab215889)



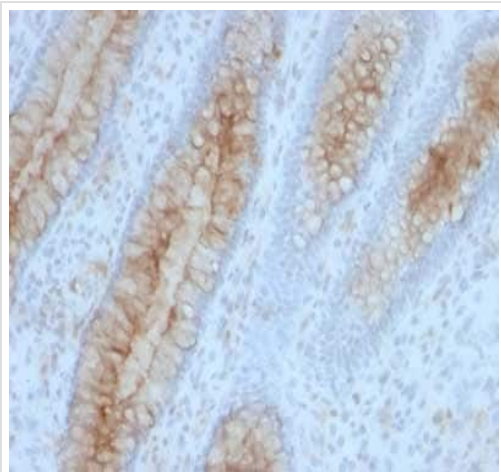
Immunohistochemical analysis of formalin-fixed, paraffin-embedded Human cervical carcinoma tissue labeling beta 2 Microglobulin with ab215889 at 1 µg/ml.

Immunohistochemistry (Formalin/PFA-fixed paraffin-embedded sections) - Anti-beta 2 Microglobulin antibody [B2M/961] (ab215889)



Immunohistochemical analysis of formalin-fixed, paraffin-embedded Human bladder carcinoma tissue labeling beta 2 Microglobulin with ab215889 at 1 µg/ml.

Immunohistochemistry (Formalin/PFA-fixed paraffin-embedded sections) - Anti-beta 2 Microglobulin antibody [B2M/961] (ab215889)



Immunohistochemical analysis of formalin-fixed, paraffin-embedded Human colon carcinoma tissue labeling beta 2 Microglobulin with ab215889 at 1 µg/ml.

Immunohistochemistry (Formalin/PFA-fixed paraffin-embedded sections) - Anti-beta 2 Microglobulin antibody [B2M/961] (ab215889)

Please note: All products are "FOR RESEARCH USE ONLY. NOT FOR USE IN DIAGNOSTIC PROCEDURES"

Our Abpromise to you: Quality guaranteed and expert technical support

- Replacement or refund for products not performing as stated on the datasheet
- Valid for 12 months from date of delivery
- Response to your inquiry within 24 hours
- We provide support in Chinese, English, French, German, Japanese and Spanish
- Extensive multi-media technical resources to help you
- We investigate all quality concerns to ensure our products perform to the highest standards

If the product does not perform as described on this datasheet, we will offer a refund or replacement. For full details of the Abpromise, please visit <https://www.abcam.co.jp/abpromise> or contact our technical team.

Terms and conditions

- Guarantee only valid for products bought direct from Abcam or one of our authorized distributors