

Anti-Beclin 1 antibody [EPR19662] ab207612

リコンビナント RabMAb[®]

★★★★★ **10 Abreviews** **217 References** **画像数 6**

製品の概要

| | |
|--------------|--|
| 製品名 | Anti-Beclin 1 antibody [EPR19662] |
| 製品の詳細 | Rabbit monoclonal [EPR19662] to Beclin 1 |
| 由来種 | Rabbit |
| アプリケーション | 適用あり: WB, IP |
| 種交差性 | 交差種: Mouse, Rat, Human |
| 免疫原 | Recombinant fragment. This information is proprietary to Abcam and/or its suppliers. |
| ポジティブ・コントロール | WB: Human fetal brain, fetal heart and fetal kidney lysates; HeLa, HepG2, HEK-293, MCF7, Jurkat, Raji, C6, RAW264.7, PC-12, NIH/3T3, A20 and C2C12 whole cell lysates; rat brain, kidney and spleen lysates; mouse brain, heart and spleen lysates. IP: HeLa whole cell lysate. |
| 特記事項 | <p>This product is a recombinant monoclonal antibody, which offers several advantages including:</p> <ul style="list-style-type: none">- High batch-to-batch consistency and reproducibility- Improved sensitivity and specificity- Long-term security of supply- Animal-free production <p>For more information see here.</p> <p>Our RabMAb[®] technology is a patented hybridoma-based technology for making rabbit monoclonal antibodies. For details on our patents, please refer to RabMAb[®] patents.</p> |

製品の特性

| | |
|-------|---|
| 製品の状態 | Liquid |
| 保存方法 | Shipped at 4°C. Store at +4°C short term (1-2 weeks). Upon delivery aliquot. Store at -20°C long term. Avoid freeze / thaw cycle. |
| バッファー | pH: 7.2 Preservative: 0.01% Sodium azide Constituents: 59% PBS, 40% Glycerol, 0.05% BSA |
| 精製度 | Protein A purified |
| ポリ/モノ | モノクローナル |
| クローン名 | EPR19662 |

アプリケーション

The Abpromise guarantee **Abpromise保証は、次のテスト済みアプリケーションにおけるab207612の使用に適用されず**
 アプリケーションノートには、推奨の開始希釈率がありますが、適切な希釈率につきましてはご検討ください。

| アプリケーション | Abreviews | 特記事項 |
|----------|-----------|--|
| WB | ★★★★★ (6) | 1/2000. Detects a band of approximately 52 kDa (predicted molecular weight: 52 kDa). |
| IP | ★★★★★ (1) | 1/30. |

ターゲット情報

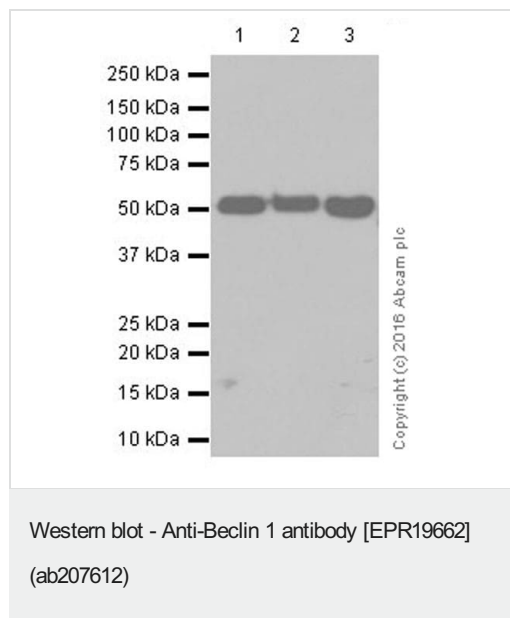
機能 Plays a central role in autophagy (By similarity). May play a role in antiviral host defense. Protects against infection by a neurovirulent strain of Sindbis virus.

組織特異性 Ubiquitous.

配列類似性 Belongs to the beclin family.

細胞内局在 Golgi apparatus > trans-Golgi network membrane. Interaction with ATG14 promotes translocation to autophagosomes. Expressed in dendrites and cell bodies of cerebellar Purkinje cells.

画像



All lanes : Anti-Beclin 1 antibody [EPR19662] (ab207612) at 1/2000 dilution

- Lane 1 :** Human fetal brain lysate
- Lane 2 :** Human fetal heart lysate
- Lane 3 :** Human fetal kidney lysate

Lysates/proteins at 10 µg per lane.

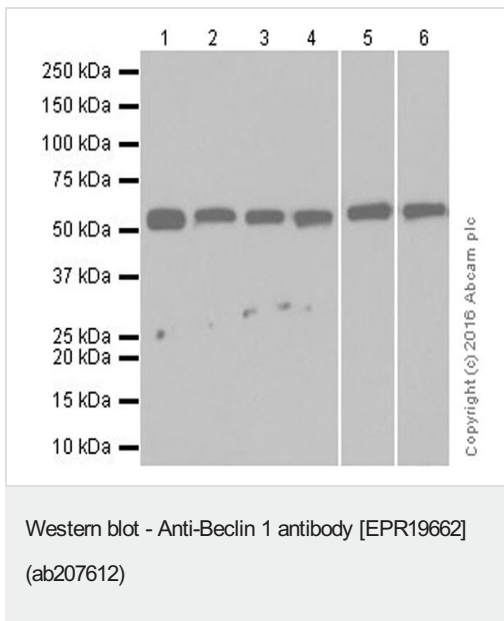
Secondary

All lanes : Goat Anti-Rabbit IgG Peroxidase Conjugate, specific to the non-reduced form of IgG at 1/10000 dilution

Predicted band size: 52 kDa
Observed band size: 52 kDa

Exposure time: 30 seconds

Blocking/Dilution buffer: 5% NFDm/TBST.



All lanes : Anti-Beclin 1 antibody [EPR19662] (ab207612) at 1/5000 dilution

Lane 1 : HeLa (Human epithelial cell line from cervix adenocarcinoma) whole cell lysate

Lane 2 : HepG2 (Human liver hepatocellular carcinoma cell line) whole cell lysate

Lane 3 : HEK-293 (Human epithelial cell line from embryonic kidney) whole cell lysate

Lane 4 : MCF7 (Human breast adenocarcinoma cell line) whole cell lysate

Lane 5 : Jurkat (Human T cell leukemia cell line from peripheral blood) whole cell lysate

Lane 6 : Raji (Human Burkitt's lymphoma cell line) whole cell lysate

Lysates/proteins at 10 µg per lane.

Secondary

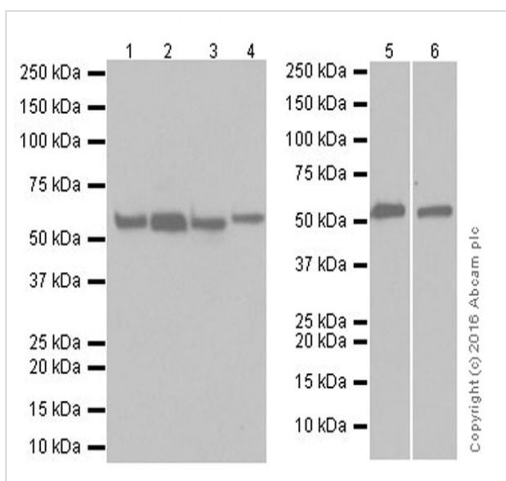
All lanes : Goat Anti-Rabbit IgG H&L (HRP) ([ab97051](#)) at 1/100000 dilution

Predicted band size: 52 kDa

Observed band size: 52 kDa

Blocking/Dilution buffer: 5% NFDm/TBST.

Exposure time: Lane 1-4: 30 seconds; Lane 5: 15 seconds; Lane 6: 15 seconds.



Western blot - Anti-Beclin 1 antibody [EPR19662]
(ab207612)

Lanes 1-4 : Anti-Beclin 1 antibody [EPR19662] (ab207612) at 1/2000 dilution

Lanes 5-6 : Anti-Beclin 1 antibody [EPR19662] (ab207612) at 1/5000 dilution

Lane 1 : C6 (Rat glioma cell line) whole cell lysate

Lane 2 : RAW 264.7 (Mouse macrophage cell line transformed with Abelson murine leukemia virus) whole cell lysate

Lane 3 : PC-12 (Rat adrenal gland pheochromocytoma cell line) whole cell lysate

Lane 4 : NIH/3T3 (Mouse embryonic fibroblast cell line) whole cell lysate

Lane 5 : A20 (Mouse reticulum sarcoma cell line) whole cell lysate

Lane 6 : C2C12 (Mouse myoblast cell line) whole cell lysate

Lysates/proteins at 10 µg per lane.

Secondary

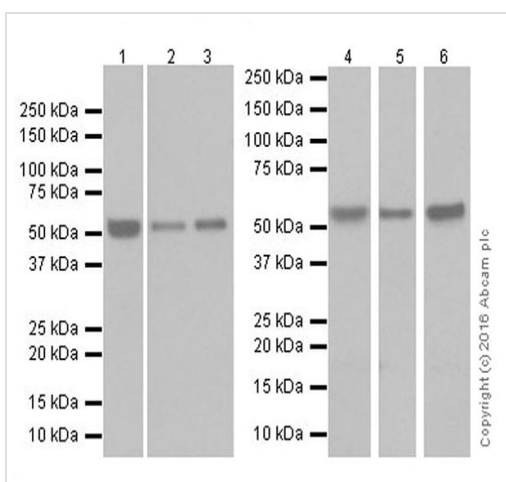
All lanes : Goat Anti-Rabbit IgG, (H+L), Peroxidase at 1/100000 dilution

Predicted band size: 52 kDa

Observed band size: 52 kDa

Blocking/Dilution buffer: 5% NFDm/TBST.

Exposure time: Lane 1-4: 5 seconds; Lane 5: 10 seconds; Lane 6: 30 seconds.



Western blot - Anti-Beclin 1 antibody [EPR19662]
(ab207612)

All lanes : Anti-Beclin 1 antibody [EPR19662] (ab207612) at 1/2000 dilution

Lane 1 : Rat brain lysate

Lane 2 : Rat kidney lysate

Lane 3 : Rat spleen lysate

Lane 4 : Mouse brain lysate

Lane 5 : Mouse heart lysate

Lane 6 : Mouse spleen lysate

Lysates/proteins at 10 µg per lane.

Secondary

All lanes : Goat Anti-Rabbit IgG H&L (HRP) (**ab97051**) at

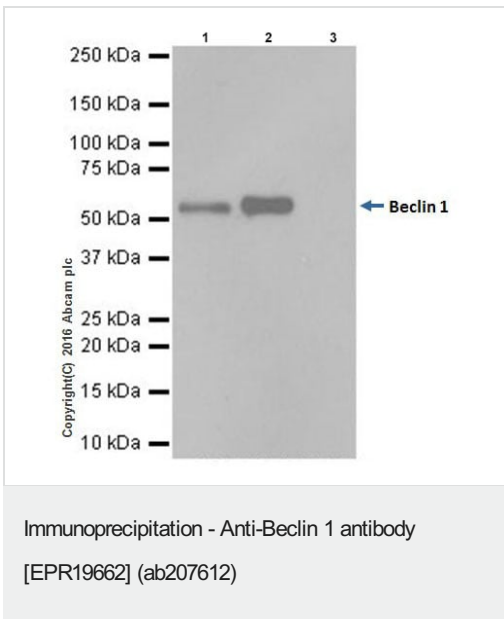
1/100000 dilution

Predicted band size: 52 kDa

Observed band size: 52 kDa

Blocking/Dilution buffer: 5% NFD/MTBST.

Exposure time: Lane 1/6: 5 seconds; Lane 2/3: 15 seconds; Lane 4: 3 seconds; Lane 5: 10 seconds.



Beclin 1 was immunoprecipitated from 0.35 mg of HeLa (Human epithelial cell line from cervix adenocarcinoma) whole cell lysate with ab207612 at 1/30 dilution.

Western blot was performed from the immunoprecipitate using ab207612 at 1/1000 dilution.

VeriBlot for IP Detection Reagent (HRP) ([ab131366](#)), was used for detection at 1/10000 dilution.

Lane 1: HeLa whole cell lysate 10µg (Input).

Lane 2: ab207612 IP in HeLa whole cell lysate.

Lane 3: Rabbit monoclonal IgG ([ab172730](#)) instead of ab207612 in HeLa whole cell lysate.

Blocking and dilution buffer and concentration: 5% NFD/MTBST.

Exposure time: 30 seconds.

Why choose a recombinant antibody?

-  **Research with confidence**
Consistent and reproducible results
-  **Long-term and scalable supply**
Recombinant technology
-  **Success from the first experiment**
Confirmed specificity
-  **Ethical standards compliant**
Animal-free production

Anti-Beclin 1 antibody [EPR19662] (ab207612)

Please note: All products are "FOR RESEARCH USE ONLY. NOT FOR USE IN DIAGNOSTIC PROCEDURES"

Our Abpromise to you: Quality guaranteed and expert technical support

- Replacement or refund for products not performing as stated on the datasheet
- Valid for 12 months from date of delivery
- Response to your inquiry within 24 hours

- We provide support in Chinese, English, French, German, Japanese and Spanish
- Extensive multi-media technical resources to help you
- We investigate all quality concerns to ensure our products perform to the highest standards

If the product does not perform as described on this datasheet, we will offer a refund or replacement. For full details of the Abpromise, please visit <https://www.abcam.co.jp/abpromise> or contact our technical team.

Terms and conditions

- Guarantee only valid for products bought direct from Abcam or one of our authorized distributors