

Anti-Bcl-XL antibody [EPR16642] ab178844

リコンビナント **RabMAb**

17 References 画像数 12

製品の概要

製品名	Anti-Bcl-XL antibody [EPR16642]
製品の詳細	Rabbit monoclonal [EPR16642] to Bcl-XL
由来種	Rabbit
アプリケーション	適用あり: IHC-P, WB, IP 適用なし: Flow Cyt or ICC/IF
種交差性	交差種: Mouse, Rat, Human
免疫原	Recombinant fragment. This information is proprietary to Abcam and/or its suppliers.
ポジティブ・コントロール	WB: Ramos, Jurkat, HeLa or K562 whole cell lysate. Mouse brain, heart, kidney, spleen. Rat brain, heart, kidney, spleen. C6, RAW 264.7, PC-12 or NIH/3T3 whole cell lysate. IHC-P: Human kidney, mouse colon, rat testis.
特記事項	This product is a recombinant monoclonal antibody, which offers several advantages including: <ul style="list-style-type: none"> - High batch-to-batch consistency and reproducibility - Improved sensitivity and specificity - Long-term security of supply - Animal-free production For more information see here . Our RabMAb [®] technology is a patented hybridoma-based technology for making rabbit monoclonal antibodies. For details on our patents, please refer to RabMAb[®] patents .

製品の特性

製品の状態	Liquid
保存方法	Shipped at 4°C. Store at +4°C short term (1-2 weeks). Upon delivery aliquot. Store at -20°C long term. Avoid freeze / thaw cycle.
バッファー	Preservative: 0.01% Sodium azide Constituents: 59% PBS, 40% Glycerol, 0.05% BSA
精製度	Protein A purified
ポリ/モノ	モノクローナル
クローン名	EPR16642

アプリケーション

The Abpromise guarantee Abpromise保証は、 次のテスト済みアプリケーションにおけるab178844の使用に適用されます
アプリケーションノートには、推奨の開始希釈率がありますが、適切な希釈率につきましてはご確認ください。

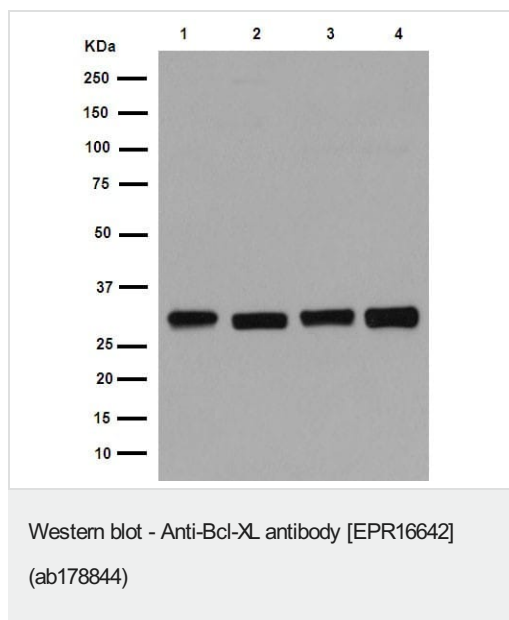
アプリケーション	Abreviews	特記事項
IHC-P		1/2000. Perform heat mediated antigen retrieval with Tris/EDTA buffer pH 9.0 before commencing with IHC staining protocol.
WB		1/20000. Detects a band of approximately 30 kDa (predicted molecular weight: 26 kDa).
IP		1/70.

追加情報 Is unsuitable for Flow Cyt or ICC/IF.

ターゲット情報

機能	Potent inhibitor of cell death. Inhibits activation of caspases (By similarity). Appears to regulate cell death by blocking the voltage-dependent anion channel (VDAC) by binding to it and preventing the release of the caspase activator, CYC1, from the mitochondrial membrane. Isoform Bcl-X(S) promotes apoptosis.
組織特異性	Bcl-X(S) is expressed at high levels in cells that undergo a high rate of turnover, such as developing lymphocytes. In contrast, Bcl-X(L) is found in tissues containing long-lived postmitotic cells, such as adult brain.
配列類似性	Belongs to the Bcl-2 family.
ドメイン	The BH4 motif is required for anti-apoptotic activity. The BH1 and BH2 motifs are required for both heterodimerization with other Bcl-2 family members and for repression of cell death.
翻訳後修飾	Proteolytically cleaved by caspases during apoptosis. The cleaved protein, lacking the BH4 motif, has pro-apoptotic activity.
細胞内局在	Mitochondrion membrane. Nucleus membrane. Mitochondrial membranes and perinuclear envelope.

画像



All lanes : Anti-Bcl-XL antibody [EPR16642] (ab178844) at 1/20000 dilution

Lane 1 : Ramos (Human Burkitt's lymphoma cell line) whole cell lysate

Lane 2 : Jurkat (Human T cell leukemia cells from peripheral blood) whole cell lysate

Lane 3 : HeLa (Human epithelial cells from cervix adenocarcinoma) whole cell lysate

Lane 4 : K562 (Human chronic myelogenous leukemia cells from bone marrow) whole cell lysate

Lysates/proteins at 20 µg per lane.

Secondary

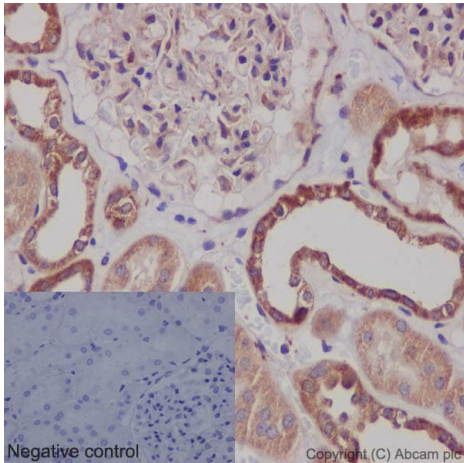
All lanes : Goat Anti-Rabbit IgG, (H+L), Peroxidase conjugated at 1/1000 dilution

Developed using the ECL technique.

Predicted band size: 26 kDa

Blocking buffer and concentration: 5% NFDM/TBST

Diluting buffer and concentration: 5% NFDM /TBST



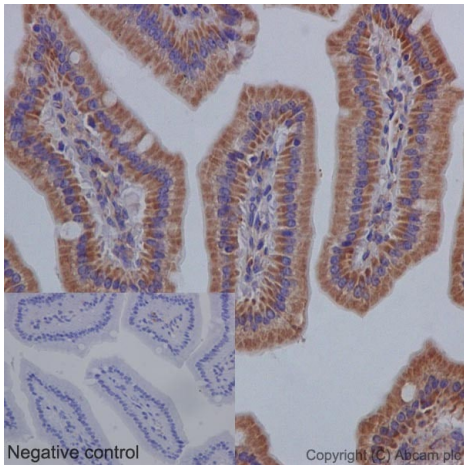
Immunohistochemistry (Formalin/PFA-fixed paraffin-embedded sections) - Anti-Bcl-XL antibody [EPR16642] (ab178844)

Immunohistochemical analysis of paraffin-embedded Human kidney tissue labeling Bcl-XL with ab178844 at 1:2000 dilution followed by prediluted HRP Polymer for Rabbit/Mouse IgG. Counter stained with hematoxylin.

Cytoplasmic staining on epithelial cells of tubules and glomeruli of kidney is observed.

Negative control: Using PBS instead of primary ab, secondary ab as above.

Perform heat mediated antigen retrieval with Tris/EDTA buffer pH 9.0 before commencing with IHC staining protocol.



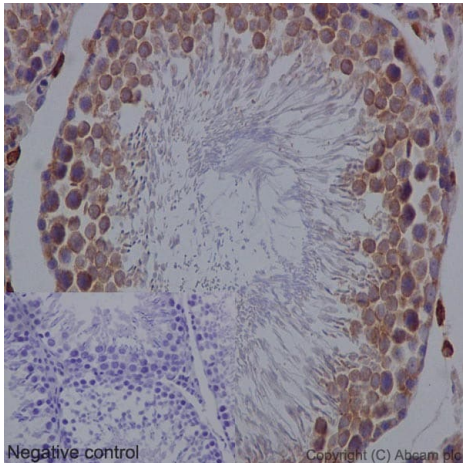
Immunohistochemistry (Formalin/PFA-fixed paraffin-embedded sections) - Anti-Bcl-XL antibody [EPR16642] (ab178844)

Immunohistochemical analysis of paraffin-embedded Mouse colon tissue labeling Bcl-XL with ab178844 at a 1/2000 dilution followed by prediluted HRP Polymer for Rabbit/Mouse IgG. Counter stained with hematoxylin.

Cytoplasm staining on epithelial cells of mouse colon tissue is observed.

Negative control: Using PBS instead of primary ab, secondary ab as above.

Perform heat mediated antigen retrieval with Tris/EDTA buffer pH 9.0 before commencing with IHC staining protocol.



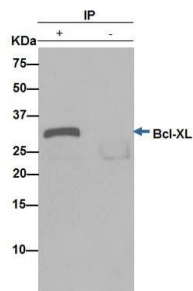
Immunohistochemistry (Formalin/PFA-fixed paraffin-embedded sections) - Anti-Bcl-XL antibody
[EPR16642] (ab178844)

Immunohistochemical analysis of paraffin-embedded Rat testis labeling Bcl-XL with ab178844 at a 1/2000 dilution followed by prediluted HRP Polymer for Rabbit/Mouse IgG. Counter stained with hematoxylin.

Cytoplasm staining on epithelial cells of testis is observed.

Negative control: Using PBS instead of primary ab, secondary ab as above.

Perform heat mediated antigen retrieval with Tris/EDTA buffer pH 9.0 before commencing with IHC staining protocol.

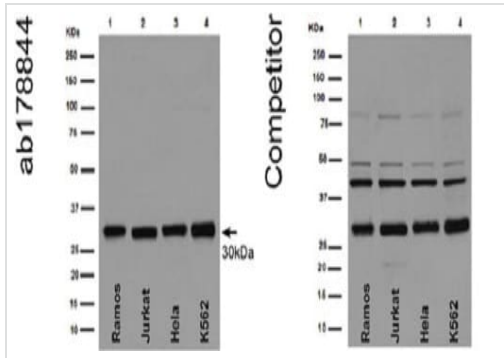


Immunoprecipitation - Anti-Bcl-XL antibody
[EPR16642] (ab178844)

Bcl-XL/S was immunoprecipitated from 1mg of Ramos (Human Burkitt's lymphoma cell line) whole cell extract with ab178844 at 1/70 dilution. Western blot was performed of the immunoprecipitate using ab178844 at 1/1000 dilution. Anti-Rabbit IgG (HRP), specific to the non-reduced form of IgG, was used as secondary antibody at 1/1500 dilution. Left lane: Ramos whole cell extract. Right lane: PBS instead of Ramos whole cell extract.

Blocking buffer and concentration: 5% NFDM/TBST. Diluting buffer and concentration:

5% NFDM/TBST.



Western blot - Anti-Bcl-XL antibody [EPR16642]
(ab178844)

All lanes : Anti-Bcl-XL/S [EPR16642] antibody (ab178844) at 1/20000 dilution, and a competitor's rabbit polyclonal antibody at 1/100 dilution

Lane 1 : Ramos (Human Burkitt's lymphoma cell line) whole cell lysate

Lane 2 : Jurkat (Human T cell leukemia cells from peripheral blood) whole cell lysate

Lane 3 : HeLa (Human epithelial cells from cervix adenocarcinoma) whole cell lysate

Lane 4 : K562 (Human chronic myelogenous leukemia cells from bone marrow) whole cell lysate

Secondary

All lanes : Goat Anti-Rabbit IgG (H+L), Peroxidase conjugated at 1/1000 dilution

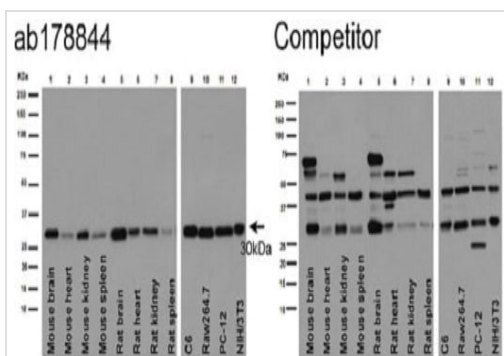
Developed using the ECL technique.

Predicted band size: 26 kDa

Observed band size: 30 kDa

This western blot image is a comparison between ab178844 and a competitor's leading rabbit polyclonal antibody.

Blocking buffer and concentration: 5% NFDM/TBST



Western blot - Anti-Bcl-XL antibody [EPR16642]
(ab178844)

All lanes : Anti-Bcl-XL/S [EPR16642] antibody (ab178844) at 1/20000 dilution, and a competitor's rabbit polyclonal antibody at 1/100 dilution

Lane 1 : Mouse brain

Lane 2 : Mouse heart

Lane 3 : Mouse kidney

Lane 4 : Mouse spleen

Lane 5 : Rat brain

Lane 6 : Rat heart

Lane 7 : Rat kidney

Lane 8 : Rat spleen

Lane 9 : C6 whole cell lysates

Lane 10 : Raw264.7 whole cell lysates

Lane 11 : PC-12 whole cell lysates

Lane 12 : NIH/3T3 whole cell lysates

Secondary

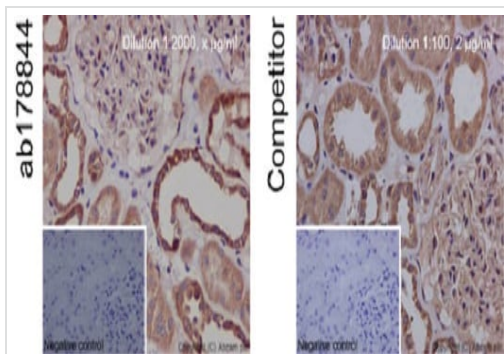
All lanes : Goat Anti-Rabbit IgG, (H+L), Peroxidase conjugated

Predicted band size: 26 kDa

Observed band size: 30 kDa

This western blot image is a comparison between ab178844 and a competitor's leading rabbit polyclonal antibody.

Blocking buffer and concentration: 5% NFDM/TBST



Immunohistochemistry (Formalin/PFA-fixed paraffin-embedded sections) - Anti-Bcl-XL antibody [EPR16642] (ab178844)

This IHC image is a comparison between ab178844 and a competitor's leading rabbit polyclonal antibody in which both antibodies were tested on Human kidney tissue.

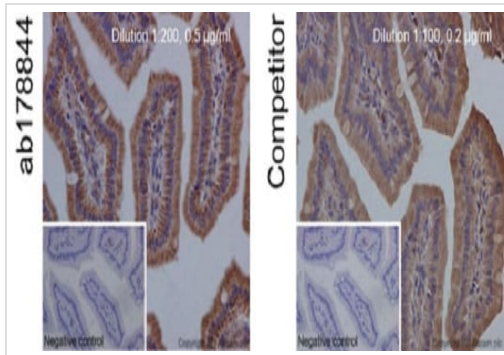
Immunohistochemical analysis of paraffin-embedded Human kidney tissue labeling Bcl-XL with ab178844 at 1/2000 dilution followed by prediluted HRP Polymer for Rabbit/Mouse IgG. Counter stained with hematoxylin.

Cytoplasmic staining on epithelial cells of tubules and glomeruli of kidney is observed.

Negative control: Using PBS instead of primary ab, secondary ab as above.

Immunohistochemical analysis of paraffin-embedded Human kidney tissue labeling Bcl-XL with competitor rabbit polyclonal at 1/100 dilution followed by prediluted HRP Polymer for Rabbit/Mouse IgG. Counter stained with hematoxylin.

Perform heat mediated antigen retrieval with Tris/EDTA buffer pH 9.0 before commencing with IHC staining protocol.



Immunohistochemistry (Formalin/PFA-fixed paraffin-embedded sections) - Anti-Bcl-XL antibody [EPR16642] (ab178844)

This IHC image is a comparison between ab178844 and competitor's leading rabbit polyclonal in which both antibodies were tested on Mouse colon tissue.

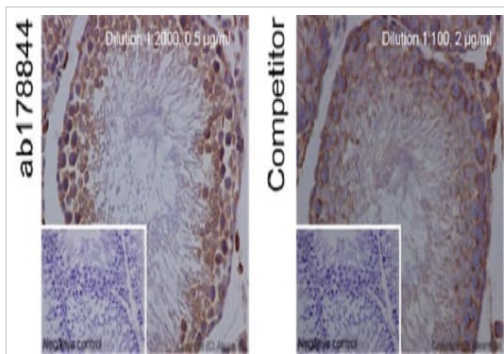
Immunohistochemical analysis of paraffin-embedded Mouse colon tissue labeling Bcl-XL with ab178844 at a 1/2000 dilution followed by prediluted HRP Polymer for Rabbit/Mouse IgG. Counter stained with hematoxylin.

Cytoplasm staining on epithelial cells of mouse colon tissue is observed.

Negative control: Using PBS instead of primary ab, secondary ab as above.

Immunohistochemical analysis of paraffin-embedded Mouse colon tissue labeling Bcl-XL with competitor rabbit polyclonal antibody at a 1/100 dilution followed by prediluted HRP Polymer for Rabbit/Mouse IgG. Counter stained with hematoxylin.

Perform heat mediated antigen retrieval with Tris/EDTA buffer pH 9.0 before commencing with IHC staining protocol.



Immunohistochemistry (Formalin/PFA-fixed paraffin-embedded sections) - Anti-Bcl-XL antibody [EPR16642] (ab178844)

This IHC image is a comparison between ab178844 and a competitor's leading rabbit polyclonal antibody in which both antibodies were tested on Rat testis tissue.

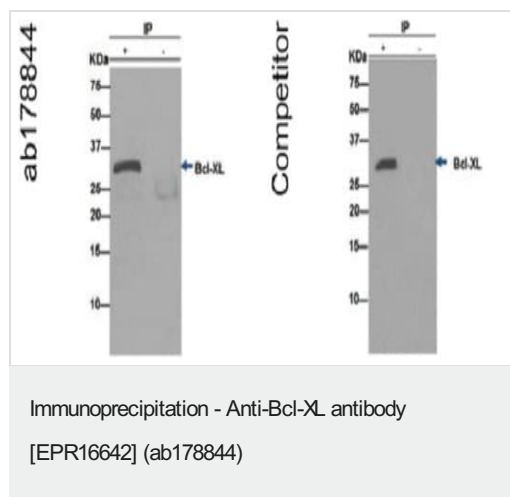
Immunohistochemical analysis of paraffin-embedded Rat testis labeling Bcl-XL with ab178844 at a 1/2000 dilution followed by prediluted HRP Polymer for Rabbit/Mouse IgG. Counter stained with hematoxylin.

Cytoplasm staining on epithelial cells of testis is observed.

Negative control: Using PBS instead of primary ab, secondary ab as above.

Immunohistochemical analysis of paraffin-embedded Rat testis labeling Bcl-XL with competitor rabbit polyclonal antibody at a 1/100 dilution followed by prediluted HRP Polymer for Rabbit/Mouse IgG. Counter stained with hematoxylin.

Perform heat mediated antigen retrieval with Tris/EDTA buffer pH 9.0 before commencing with IHC staining protocol.



This immunoprecipitation image is a comparison between ab178844 and a competitor's leading rabbit polyclonal antibody.

Bcl-XL/S was immunoprecipitated from 1mg of Ramos (Human Burkitt's lymphoma cell line) whole cell extract with ab178844 at 1/70 dilution. Western blot was performed of the immunoprecipitate using ab178844 at 1/1000 dilution. Anti-Rabbit IgG (HRP), specific to the non-reduced form of IgG, was used as secondary antibody at 1/1500 dilution. Left lane: Ramos whole cell extract. Right lane: PBS instead of Ramos whole cell extract.

Bcl-XL/S was immunoprecipitated from 1mg of Ramos (Human Burkitt's lymphoma cell line) whole cell extract with competitor rabbit polyclonal antibody at 1/12 dilution. Western blot was performed of the immunoprecipitate using competitor antibody at 1/100 dilution. Anti-Rabbit IgG (HRP), specific to the non-reduced form of IgG, was used as secondary antibody at 1/1500 dilution. Left lane: Ramos whole cell extract. Right lane: PBS instead of Ramos whole cell extract.

Blocking buffer and concentration: 5% NFDM/TBST.

Diluting buffer and concentration: 5% NFDM/TBST.

Why choose a recombinant antibody?

Research with confidence
Consistent and reproducible results

Long-term and scalable supply
Recombinant technology

Success from the first experiment
Confirmed specificity

Ethical standards compliant
Animal-free production

Anti-Bcl-XL antibody [EPR16642] (ab178844)

Please note: All products are "FOR RESEARCH USE ONLY. NOT FOR USE IN DIAGNOSTIC PROCEDURES"

Our Abpromise to you: Quality guaranteed and expert technical support

- Replacement or refund for products not performing as stated on the datasheet
- Valid for 12 months from date of delivery
- Response to your inquiry within 24 hours
- We provide support in Chinese, English, French, German, Japanese and Spanish
- Extensive multi-media technical resources to help you

- We investigate all quality concerns to ensure our products perform to the highest standards

If the product does not perform as described on this datasheet, we will offer a refund or replacement. For full details of the Abpromise, please visit <https://www.abcam.co.jp/abpromise> or contact our technical team.

Terms and conditions

- Guarantee only valid for products bought direct from Abcam or one of our authorized distributors