


Anti-Bcl-XL antibody [E18] ab32370

リコンビナント **RabMAb**

★★★★★ **10 Abreviews** **211 References** 画像数 18

製品の概要

製品名	Anti-Bcl-XL antibody [E18]
製品の詳細	Rabbit monoclonal [E18] to Bcl-XL
由来種	Rabbit
特異性	This antibody should recognize Bcl-XL, Bcl-xS and Bcl-x(beta) as the immunogen sequence is common to them. The antibody does not cross-react with other Bcl-2 family members.
アプリケーション	適用あり: WB, IHC-P, ICC/IF, IP, Flow Cyt (Intra)
種交差性	交差種: Mouse, Rat, Human 交差が予測される動物種: Pig 
免疫原	Synthetic peptide. This information is proprietary to Abcam and/or its suppliers.
ポジティブ・コントロール	WB: Jurkat, K562, C6, RAW264.7, PC-12 NIH/3T3 cell lysates. IHC-P: Human endometrium and prostate carcinoma tissues. ICC/IF: HepG2, NIH/3T3, C6 and HeLa cells. Flow Cyt (intra): DU145 and Jurkat cells. IP: Jurkat whole cell lysate (ab7899).
特記事項	<p>This product is a recombinant monoclonal antibody, which offers several advantages including:</p> <ul style="list-style-type: none"> - High batch-to-batch consistency and reproducibility - Improved sensitivity and specificity - Long-term security of supply - Animal-free production <p>For more information see here.</p> <p>Our RabMAb[®] technology is a patented hybridoma-based technology for making rabbit monoclonal antibodies. For details on our patents, please refer to RabMAb[®] patents.</p>

製品の特性

製品の状態	Liquid
保存方法	Shipped at 4°C. Store at +4°C short term (1-2 weeks). Upon delivery aliquot. Store at -20°C. Avoid freeze / thaw cycle.
解離定数 (K _D 値)	K _D = 6.50 x 10 ⁻¹¹ M





[Learn more about K_D](#)

バッファー	pH: 7.20 Preservative: 0.01% Sodium azide Constituents: 59% PBS, 40% Glycerol, 0.05% BSA
精製度	Protein A purified
ポリ/モノ	モノクローナル
クローン名	E18
アイソタイプ	IgG

アプリケーション

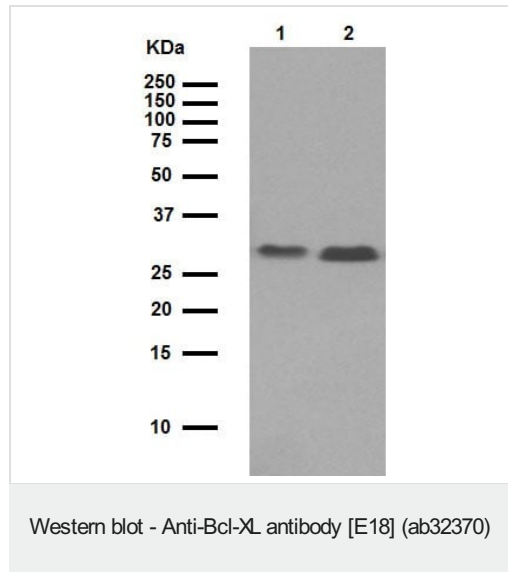
The Abpromise guarantee **Abpromise保証は、次のテスト済みアプリケーションにおけるab32370の使用に適用されます**
アプリケーションノートには、推奨の開始希釈率がありますが、適切な希釈率につきましてはご検討ください。

アプリケーション	Abreviews	特記事項
WB	★★★★★ (8)	1/1000. Detects a band of approximately 26 kDa.
IHC-P		1/2000. Perform heat mediated antigen retrieval with Tris/EDTA buffer pH 9.0 before commencing with IHC staining protocol. See IHC antigen retrieval protocols .
ICC/IF	★★★★★ (1)	1/100 - 1/500.
IP		1/10 - 1/30.
Flow Cyt (Intra)		1/20 - 1/100. ab172730 - Rabbit monoclonal IgG, is suitable for use as an isotype control with this antibody.

ターゲット情報

機能	Potent inhibitor of cell death. Inhibits activation of caspases (By similarity). Appears to regulate cell death by blocking the voltage-dependent anion channel (VDAC) by binding to it and preventing the release of the caspase activator, CYC1, from the mitochondrial membrane. Isoform Bcl-X(S) promotes apoptosis.
組織特異性	Bcl-X(S) is expressed at high levels in cells that undergo a high rate of turnover, such as developing lymphocytes. In contrast, Bcl-X(L) is found in tissues containing long-lived postmitotic cells, such as adult brain.
配列類似性	Belongs to the Bcl-2 family.
ドメイン	The BH4 motif is required for anti-apoptotic activity. The BH1 and BH2 motifs are required for both heterodimerization with other Bcl-2 family members and for repression of cell death.
翻訳後修飾	Proteolytically cleaved by caspases during apoptosis. The cleaved protein, lacking the BH4 motif, has pro-apoptotic activity.
細胞内局在	Mitochondrion membrane. Nucleus membrane. Mitochondrial membranes and perinuclear

画像



All lanes : Anti-Bcl-XL antibody [E18] (ab32370) at 1/1000 dilution (purified)

Lane 1 : Jurkat cell lysate

Lane 2 : K562 cell lysate

Lysates/proteins at 20 µg per lane.

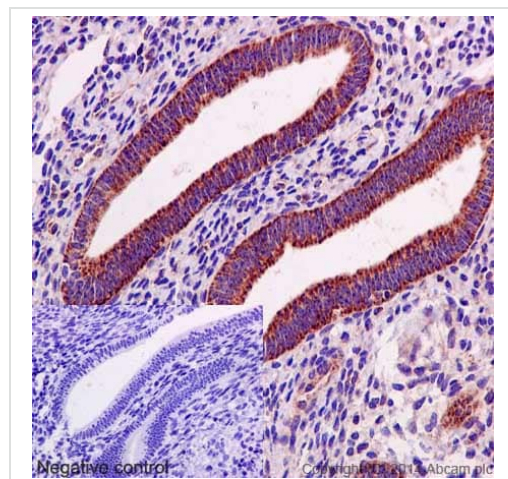
Secondary

All lanes : Peroxidase-conjugated goat anti-rabbit IgG (H+L) at 1/1000 dilution

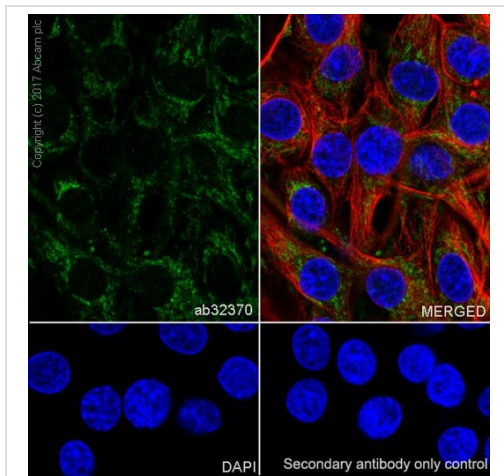
Observed band size: 26 kDa

Blocking buffer and concentration: 5% NFDM/TBST.

Diluting buffer and concentration: 5% NFDM /TBST.

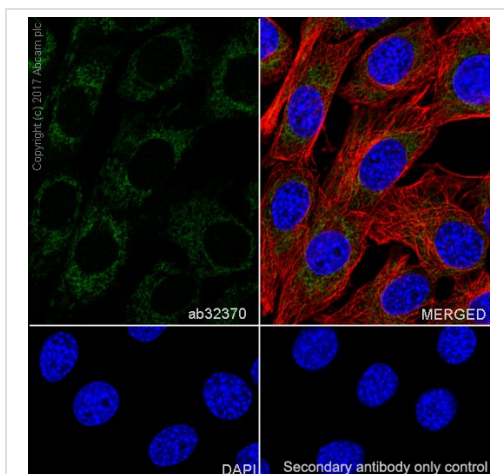


Immunohistochemistry (Formalin/PFA-fixed paraffin-embedded sections) - Anti-Bcl-XL antibody [E18] (ab32370)



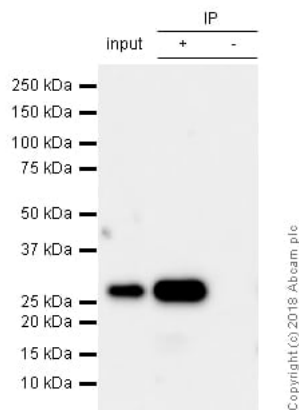
Immunocytochemistry/ Immunofluorescence - Anti-Bcl-XL antibody [E18] (ab32370)

Immunocytochemistry/ Immunofluorescence analysis of C6(Rat glial tumor glial cell) cells labeling Bcl-XL with purified ab32370 at 1/100 dilution (1.42 µg/ml). Cells were fixed in 4% paraformaldehyde and permeabilized with 0.1% Triton X-100. Cells were counterstained with Ab195889 Anti-alpha Tubulin antibody [DM1A] - Microtubule Marker (Alexa Fluor® 594) 1/200 (2.5 µg/ml). Goat anti rabbit IgG (Alexa Fluor® 488, **ab150077**) was used as the secondary antibody at 1/1000 dilution (2 µg/ml) dilution. DAPI was used as nuclear counterstain. PBS instead of the primary antibody was used as the secondary antibody only control.



Immunocytochemistry/ Immunofluorescence - Anti-Bcl-XL antibody [E18] (ab32370)

Immunocytochemistry/ Immunofluorescence analysis of NIH/3T3(Mouse embryonic fibroblast) cells labeling Bcl-XL with purified ab32370 at 1/100 dilution (1.42 µg/ml). Cells were fixed in 4% paraformaldehyde and permeabilized with 0.1% Triton X-100. Cells were counterstained with Ab195889 Anti-alpha Tubulin antibody [DM1A] - Microtubule Marker (Alexa Fluor® 594) 1/200 (2.5 µg/ml). Goat anti rabbit IgG (Alexa Fluor® 488, **ab150077**) was used as the secondary antibody at 1/1000 dilution (2 µg/ml) dilution. DAPI was used as nuclear counterstain. PBS instead of the primary antibody was used as the secondary antibody only control.



Immunoprecipitation - Anti-Bcl-XL antibody [E18]
(ab32370)

ab32370 (purified) at 1/20 dilution immunoprecipitating Bcl-XL in NIH/3T3 whole cell lysate.

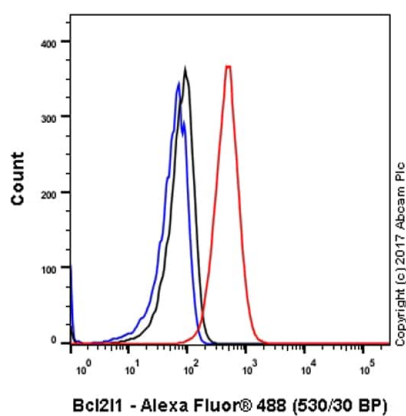
Lane 1 (input): NIH/3T3(Mouse embryonic fibroblast) whole cell lysate 10µg

Lane 2 (+): ab32370 & NIH/3T3 whole cell lysate

Lane 3 (-): Rabbit monoclonal IgG (**ab172730**) instead of ab32370 in NIH/3T3 whole cell lysate

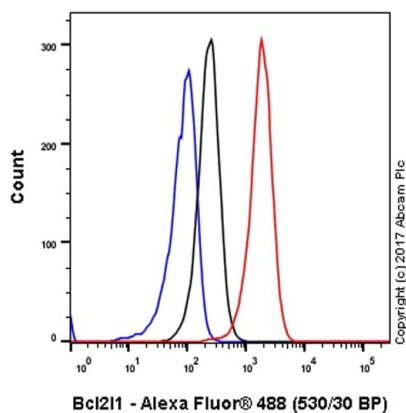
For western blotting, ab32370 at 1/500 dilution (0.28 µg/ml) and VeriBlot for IP Detection Reagent (HRP) (**ab131366**) was used for detection at 1/1000 dilution.

Blocking and diluting buffer: 5% NFDM /TBST .



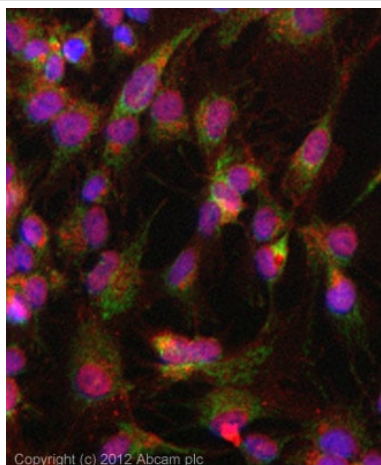
Flow Cytometry (Intracellular) - Anti-Bcl-XL antibody
[E18] (ab32370)

Intracellular Flow Cytometry analysis of NIH/3T3 (Mouse embryonic fibroblast) cells labelling Bcl-XL with ab32370 at 1/20 dilution (7.1 µg/ml) (Red). Cells were fixed with 4% paraformaldehyde . Goat anti rabbit IgG (Alexa Fluor® 488, **ab150077**) was used as the secondary antibody at 1/2000 dilution. Isotype control - Rabbit monoclonal IgG (**ab172730**) (Black). Unlabeled control - Unlabelled cells (Blue).



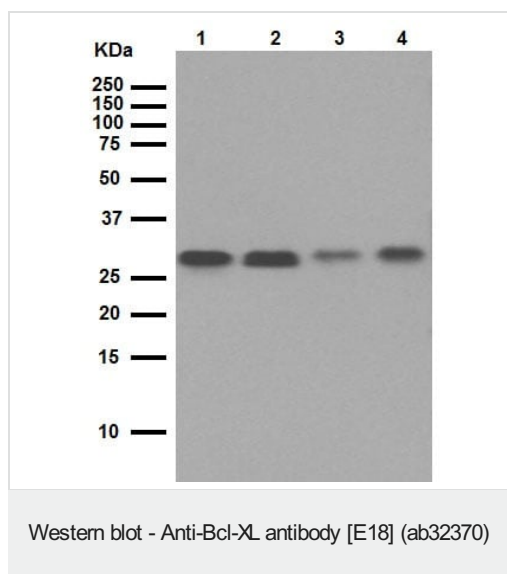
Flow Cytometry (Intracellular) - Anti-Bcl-XL antibody
[E18] (ab32370)

Intracellular Flow Cytometry analysis of C6 (Rat glial tumor glial cell) cells labelling Bcl-XL with ab32370 at 1/20 dilution (7.1 µg/ml) (Red). Cells were fixed with 4% paraformaldehyde. Goat anti rabbit IgG (Alexa Fluor® 488, **ab150077**) was used as the secondary antibody at 1/2000 dilution. Isotype control - Rabbit monoclonal IgG (**ab172730**) (Black). Unlabeled control - Unlabelled cells (Blue).



Immunocytochemistry/ Immunofluorescence - Anti-Bcl-XL antibody [E18] (ab32370)

ICC/IF image of unpurified ab32370 stained HepG2 cells. The cells were 4% formaldehyde fixed (10 min) and then incubated in 1%BSA / 10% normal goat serum / 0.3M glycine in 0.1% PBS-Tween for 1h to permeabilise the cells and block non-specific protein-protein interactions. The cells were then incubated with the antibody (ab32370, 1/100) overnight at +4°C. The secondary antibody (green) was **ab96899**, goat **anti-rabbit DyLight® 488** (IgG; H+L) used at a 1/250 dilution for 1h. Alexa Fluor® 594 WGA was used to label plasma membranes (red) at a 1/200 dilution for 1h. DAPI was used to stain the cell nuclei (blue) at a concentration of 1.43µM.



All lanes : Anti-Bcl-XL antibody [E18] (ab32370) at 1/1000 dilution (purified)

Lane 1 : C6 cell lysate

Lane 2 : RAW264.7 cell lysate

Lane 3 : PC-12 cell lysate

Lane 4 : NIH/3T3 cell lysate

Lysates/proteins at 20 µg per lane.

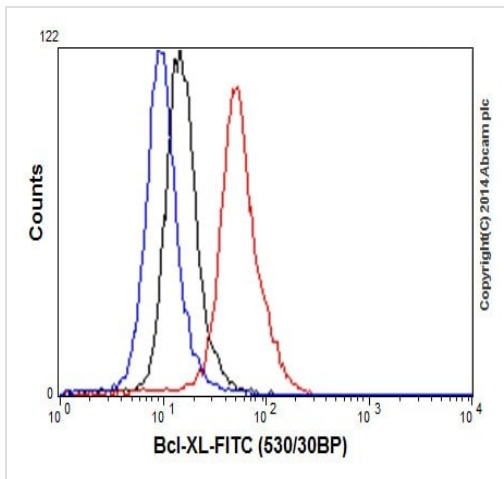
Secondary

All lanes : Peroxidase-conjugated goat anti-rabbit IgG (H+L) at 1/1000 dilution

Observed band size: 26 kDa

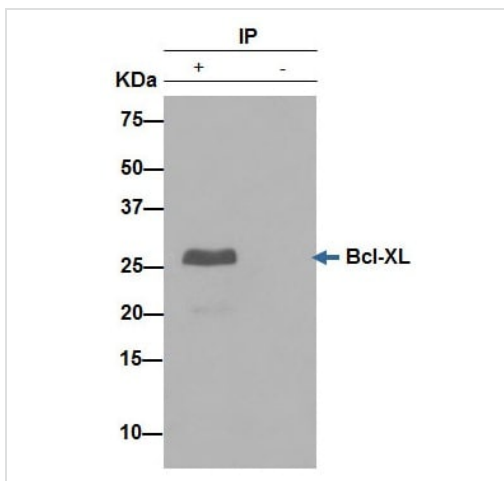
Blocking buffer and concentration: 5% NFDM/TBST.

Diluting buffer and concentration: 5% NFDM /TBST.



Flow Cytometry (Intracellular) - Anti-Bcl-XL antibody [E18] (ab32370)

Intracellular Flow Cytometry analysis of Jurkat cells labelling Bcl-XL with purified ab32370 at 1/20 (red). Cells were fixed with 2% paraformaldehyde. A FITC-conjugated goat anti-rabbit IgG (1/150) was used as the secondary antibody. Black - Isotype control, rabbit monoclonal IgG. Blue - Unlabelled control, cells without incubation with primary and secondary antibodies.

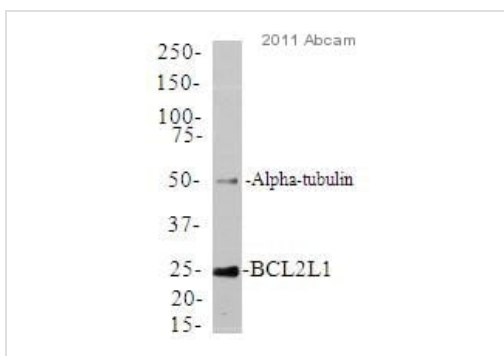


Immunoprecipitation - Anti-Bcl-XL antibody [E18] (ab32370)

ab32370 (purified) at 1/30 immunoprecipitating Bcl-XL in Jurkat cell lysate (Lane 1). Lane 2 - PBS. For western blotting, a HRP-conjugated anti-rabbit IgG, specific to the non-reduced form of IgG was used as the secondary antibody (1/1500).

Blocking buffer and concentration: 5% NFDM/TBST.

Diluting buffer and concentration: 5% NFDM /TBST.



Western blot - Anti-Bcl-XL antibody [E18] (ab32370)
Image courtesy of an anonymous Abreview.

Anti-Bcl-XL antibody [E18] (ab32370) at 1/500 dilution (unpurified) + whole cell lysate prepared from a clinical sample of human breast cancer cells at 20 µg

Secondary

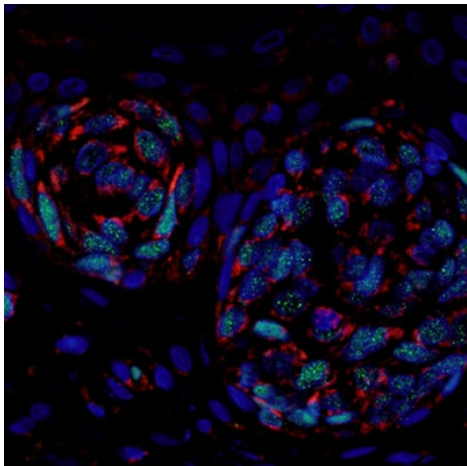
Goat anti-rabbit IgG-HRP at 1/1000 dilution

Developed using the ECL technique.

Observed band size: 26 kDa

Exposure time: 15 minutes

Patient recieved anthracycline and taxane neoadjuvant chemotherapy.



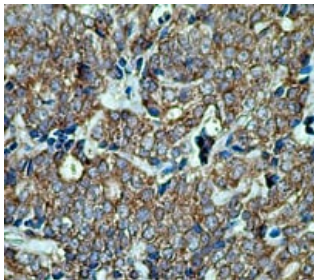
Immunohistochemistry (Formalin/PFA-fixed paraffin-embedded sections) - Anti-Bcl-XL antibody [E18] (ab32370)

Image from Medic S & Ziman M, PLoS One. 2010 Apr 22;5(4):e9977. Fig 5.; doi:10.1371/journal.pone.0009977; April 22, 2010, PLoS ONE 5(4): e9977.

Immunohistochemistry of human primary melanoma, staining Bcl-XL (red) with unpurified ab32370.

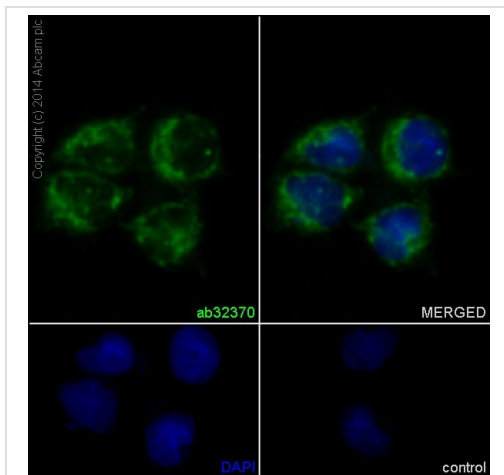
Antigen retrieval was performed in EDTA/Tris buffer (pH 8) before being blocked with 10%NGS for one hour at room temperature.

Samples were incubated with primary antibody (1/50) at room temperature for one hour. An AlexaFluor®-conjugated anti-rabbit IgG was used as the secondary antibody.

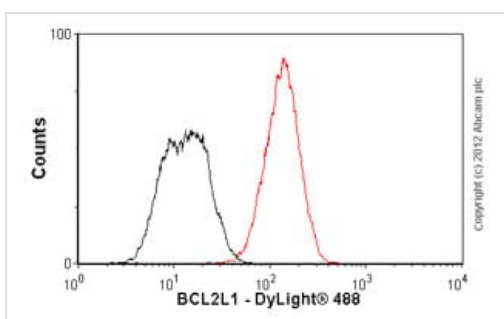


Immunohistochemistry (Formalin/PFA-fixed paraffin-embedded sections) - Anti-Bcl-XL antibody [E18] (ab32370)

Immunohistochemistry (Formalin/PFA-fixed paraffin-embedded sections) analysis of human prostate carcinoma tissue labelling Bcl-XL with unpurified ab32370 at 1/50.



Immunocytochemistry/ Immunofluorescence - Anti-Bcl-XL antibody [E18] (ab32370)

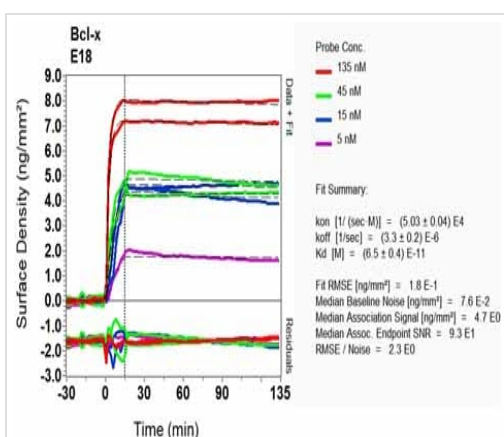


Flow Cytometry (Intracellular) - Anti-Bcl-XL antibody [E18] (ab32370)

Immunocytochemistry/Immunofluorescence analysis of HeLa cells labelling Bcl-XL with purified ab32370 at 1/500. Cells were fixed with 4% paraformaldehyde and permeabilized with 0.1% Triton X-100. **ab150077**, a goat anti-rabbit Alexa Fluor® 488 (IgG; 1/500) was used as the secondary antibody. DAPI (blue) was used as the nuclear counterstain.

Control: primary antibody (1/500) and secondary antibody, **ab150120**, an Alexa Fluor® 594-conjugated goat anti-mouse IgG (1/500).

Overlay histogram showing DU145 cells stained with unpurified ab32370 (red line). The cells were fixed with 80% methanol (5 min) and then permeabilized with 0.1% PBS-Tween for 20 min. The cells were then incubated in 1x PBS / 10% normal goat serum / 0.3M glycine to block non-specific protein-protein interactions followed by the antibody (ab32370, 1/100 dilution) for 30 min at 22°C. The secondary antibody used was a goat anti-rabbit DyLight® 488 (IgG; H+L) (**ab96899**) at 1/500 dilution for 30 min at 22°C. Isotype control antibody (black line) was rabbit IgG (monoclonal) (1µg/1x10⁶ cells) used under the same conditions. Acquisition of >5,000 events was performed.



BIACORE Scanning - Anti-Bcl-XL antibody [E18] (ab32370)

Equilibrium dissociation constant (K_D)

Learn more about K_D

[Click here to learn more about \$K_D\$](#)

Why choose a recombinant antibody?



Research with confidence
Consistent and reproducible results



Long-term and scalable supply
Recombinant technology



Success from the first experiment
Confirmed specificity



Ethical standards compliant
Animal-free production

Anti-Bcl-XL antibody [E18] (ab32370)

Please note: All products are "FOR RESEARCH USE ONLY. NOT FOR USE IN DIAGNOSTIC PROCEDURES"

Our Abpromise to you: Quality guaranteed and expert technical support

- Replacement or refund for products not performing as stated on the datasheet
- Valid for 12 months from date of delivery
- Response to your inquiry within 24 hours
- We provide support in Chinese, English, French, German, Japanese and Spanish
- Extensive multi-media technical resources to help you
- We investigate all quality concerns to ensure our products perform to the highest standards

If the product does not perform as described on this datasheet, we will offer a refund or replacement. For full details of the Abpromise, please visit <https://www.abcam.co.jp/abpromise> or contact our technical team.

Terms and conditions

- Guarantee only valid for products bought direct from Abcam or one of our authorized distributors