

Anti-Bcl G/BCL2L14 antibody [EPR17666] ab184925

リコンビナント **RabMAb**

2 References [画像数 11](#)

製品の概要

製品名	Anti-Bcl G/BCL2L14 antibody [EPR17666]
製品の詳細	Rabbit monoclonal [EPR17666] to Bcl G/BCL2L14
由来種	Rabbit
アプリケーション	適用あり: Flow Cyt (Intra), IHC-P, ICC/IF, IP, WB
種交差性	交差種: Mouse, Rat, Human
免疫原	Recombinant fragment. This information is proprietary to Abcam and/or its suppliers.
ポジティブ・コントロール	WB: HeLa , K562, A549, C6, RAW 264.7, PC-12 and NIH/3T3 whole cell lysates; Human fetal liver and Human testis lysates; Mouse brain, heart, kidney and spleen lysates; Rat brain and heart lysates. IHC-P: Human tonsil, Human squamous cell carcinoma of cervix, mouse kidney and rat colon tissues. ICC/IF: MCF7 cells. Flow Cyt (intra): Jurkat cells. IP: HeLa whole cell extract.
特記事項	<p>This product is a recombinant monoclonal antibody, which offers several advantages including:</p> <ul style="list-style-type: none"> - High batch-to-batch consistency and reproducibility - Improved sensitivity and specificity - Long-term security of supply - Animal-free production <p>For more information see here.</p> <p>Our RabMAb[®] technology is a patented hybridoma-based technology for making rabbit monoclonal antibodies. For details on our patents, please refer to RabMAb[®] patents.</p>

製品の特性

製品の状態	Liquid
保存方法	Shipped at 4°C. Store at +4°C short term (1-2 weeks). Upon delivery aliquot. Store at -20°C long term. Avoid freeze / thaw cycle.
バッファー	pH: 7.2 Preservative: 0.01% Sodium azide Constituents: 59% PBS, 40% Glycerol (glycerin, glycerine), 0.05% BSA
精製度	Protein A purified
ポリモノ	モノクローナル
クローン名	EPR17666

アプリケーション

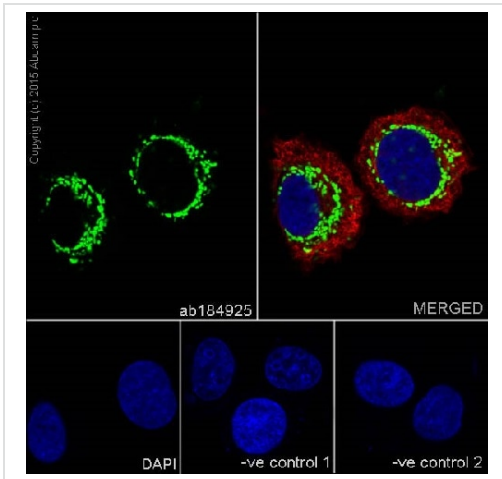
The Abpromise guarantee Abpromise保証は、次のテスト済みアプリケーションにおけるab184925の使用に適用されます
アプリケーションノートには、推奨の開始希釈率がありますが、適切な希釈率につきましてはご検討ください。

アプリケーション	Abreviews	特記事項
Flow Cyt (Intra)		1/130. ab172730 - Rabbit monoclonal IgG, is suitable for use as an isotype control with this antibody.
IHC-P		1/100. Perform heat mediated antigen retrieval with Tris/EDTA buffer pH 9.0 before commencing with IHC staining protocol.
ICC/IF		1/250.
IP		1/40.
WB		1/2000. Detects a band of approximately 40 kDa (predicted molecular weight: 37 kDa).

ターゲット情報

関連性	Bcl-G is a novel pro-apoptotic member of the Bcl-2 family. The human Bcl-G gene encodes two proteins through alternative mRNA splicing, Bcl-G(L) (long) and Bcl-G(S) (short) consisting of 327 and 252 amino acids in length, respectively. Bcl-G(L) mRNA is expressed widely in adult human tissues, whereas Bcl-G(S) mRNA was found only in testis. Overexpression of Bcl-G(L) or Bcl-G(S) in cells induced apoptosis although Bcl-G(S) was far more potent than Bcl-G(L).
細胞内局在	Isoform 1: Cytoplasm; cytosol. Note: Diffusely distributed throughout the cytosol. Isoform 2: Endomembrane system. Note: Predominantly localized to cytosolic organelles.

画像



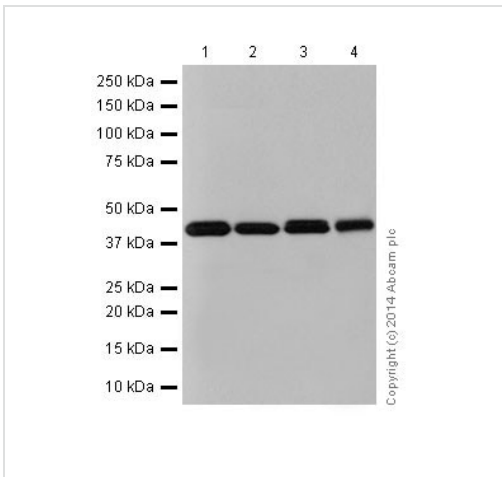
Immunocytochemistry/ Immunofluorescence - Anti-Bcl G/BCL2L14 antibody [EPR17666] (ab184925)

Immunofluorescent analysis of 4% paraformaldehyde-fixed, 0.1% Triton X-100 permeabilized MCF7 (Human breast adenocarcinoma cell line) cells labeling Bcl G/BCL2L14 with ab184925 at 1/250 dilution, followed by Goat anti-rabbit I Alexa Fluor® 488 (IgG) (**ab150077**) secondary antibody at 1/500 dilution (green). Confocal image showing cytoplasmic staining on MCF7 cell line. The nuclear counter stain is DAPI (blue). Tubulin is detected with **ab7291** (anti-Tubulin mouse mAb) at 1/1000 dilution and **ab150120** (goat anti-mouse AlexaFluor®594 secondary) at 1/500 dilution (red).

The negative controls are as follows:

-ve control 1: ab184925 at 1/250 dilution followed by **ab150120** (AlexaFluor®594 Goat anti-Mouse secondary) at 1/500 dilution.

-ve control 2: **ab7291** (anti-Tubulin mouse mAb) at 1/1000 dilution followed by **ab150077** (Alexa Fluor®488 Goat Anti-Rabbit IgG H&L) at 1/500 dilution.



Western blot - Anti-Bcl G/BCL2L14 antibody [EPR17666] (ab184925)

All lanes : Anti-Bcl G/BCL2L14 antibody [EPR17666] (ab184925) at 1/2000 dilution

Lane 1 : HeLa (Human epithelial cells from cervix adenocarcinoma) whole cell lysates

Lane 2 : K562 (Human chronic myelogenous leukemia cells from bone marrow) whole cell lysates

Lane 3 : A549 (Human lung carcinoma) whole cell lysates

Lane 4 : Human fetal liver lysates

Lysates/proteins at 20 µg per lane.

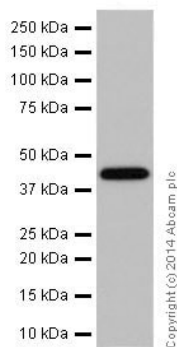
Secondary

All lanes : Goat Anti-Rabbit IgG, (H+L), Peroxidase conjugated at 1/1000 dilution

Predicted band size: 37 kDa

Observed band size: 40 kDa

Blocking/Dilution buffer: 5% NFDM/TBST.



Western blot - Anti-Bcl G/BCL2L14 antibody [EPR17666] (ab184925)

Anti-Bcl G/BCL2L14 antibody [EPR17666] (ab184925) at 1/5000 dilution + Human testis lysates at 10 µg

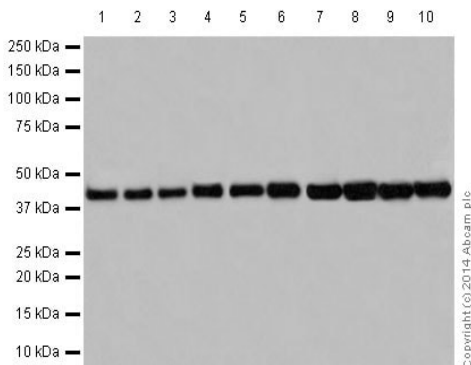
Secondary

Goat Anti-Rabbit IgG, (H+L), Peroxidase conjugated at 1/1000 dilution

Predicted band size: 37 kDa

Observed band size: 40 kDa

Blocking/Dilution buffer: 5% NFDm/TBST.



Western blot - Anti-Bcl G/BCL2L14 antibody [EPR17666] (ab184925)

All lanes : Anti-Bcl G/BCL2L14 antibody [EPR17666] (ab184925) at 1/2000 dilution

Lane 1 : Mouse brain lysates

Lane 2 : Mouse heart lysates

Lane 3 : Mouse kidney lysates

Lane 4 : Mouse spleen lysates

Lane 5 : Rat brain lysates

Lane 6 : Rat heart lysates

Lane 7 : C6 (Rat glial tumor cells) whole cell lysates

Lane 8 : RAW 264.7 (Mouse macrophage cells transformed with Abelson murine leukemia virus) whole cell lysates

Lane 9 : PC-12 (Rat adrenal gland pheochromocytoma) whole cell lysates

Lane 10 : NIH/3T3 (Mouse embryo fibroblast cells) whole cell lysates

Lysates/proteins at 10 µg per lane.

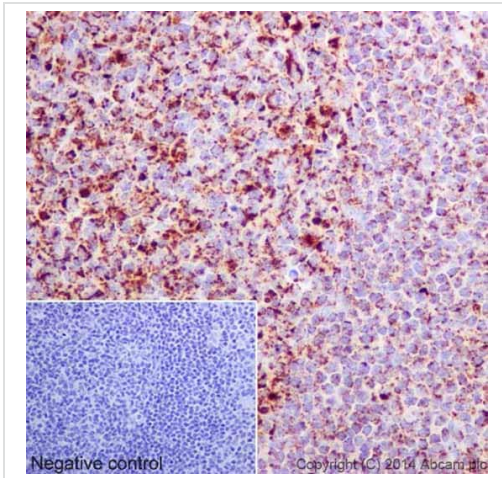
Secondary

All lanes : Goat Anti-Rabbit IgG, (H+L), Peroxidase conjugated at 1/1000 dilution

Predicted band size: 37 kDa

Observed band size: 40 kDa

Blocking/Dilution buffer: 5% NFDM/TBST.



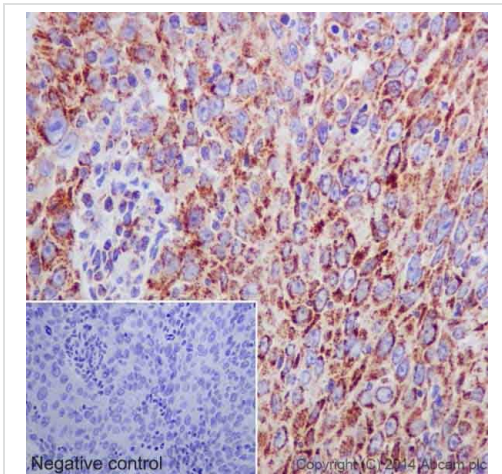
Immunohistochemistry (Formalin/PFA-fixed paraffin-embedded sections) - Anti-Bcl G/BCL2L14 antibody [EPR17666] (ab184925)

Immunohistochemical analysis of paraffin-embedded Human tonsil tissue labeling Bcl G/BCL2L14 with ab184925 at 1/500 dilution followed by Goat Anti-Rabbit IgG H&L (HRP) (**ab97051**) secondary at 1/500 dilution. Cytoplasm staining on lymphocytes of Human tonsil is observed. Counter stained with Hematoxylin.

Negative control: Using PBS instead of primary antibody, secondary antibody is Goat Anti-Rabbit IgG H&L (HRP) (**ab97051**) at 1/500 dilution.

J Biol Chem. 2001 Jan 26;276(4):2780-5.

Perform heat mediated antigen retrieval with Tris/EDTA buffer pH 9.0 before commencing with IHC staining protocol.

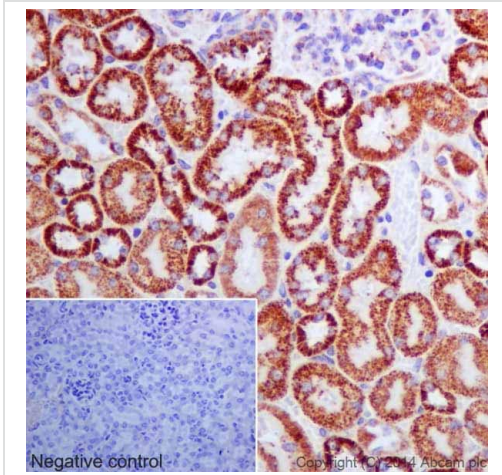


Immunohistochemistry (Formalin/PFA-fixed paraffin-embedded sections) - Anti-Bcl G/BCL2L14 antibody [EPR17666] (ab184925)

Immunohistochemical analysis of paraffin-embedded Human squamous cell carcinoma of cervix tissue labeling Bcl G/BCL2L14 with ab184925 at 1/500 dilution followed by Goat Anti-Rabbit IgG H&L (HRP) (**ab97051**) secondary at 1/500 dilution. Cytoplasmic staining on tumor cells of Human cervical squamous cell carcinoma is observed. Counter stained with Hematoxylin.

Negative control: Using PBS instead of primary antibody, secondary antibody is Goat Anti-Rabbit IgG H&L (HRP) (**ab97051**) at 1/500 dilution.

Perform heat mediated antigen retrieval with Tris/EDTA buffer pH 9.0 before commencing with IHC staining protocol.

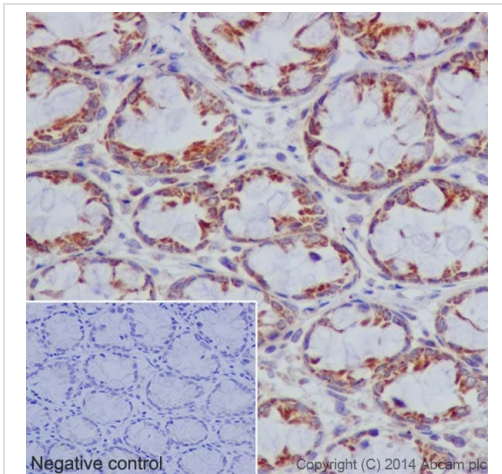


Immunohistochemical analysis of paraffin-embedded Mouse kidney tissue labeling Bcl G/BCL2L14 with ab184925 at 1/500 dilution followed by Goat Anti-Rabbit IgG H&L (HRP) ([ab97051](#)) secondary at 1/500 dilution. Cytoplasmic staining on mouse kidney tubules is observed. Counter stained with Hematoxylin.

Negative control: Using PBS instead of primary antibody, secondary antibody is Goat Anti-Rabbit IgG H&L (HRP) ([ab97051](#)) at 1/500 dilution.

Perform heat mediated antigen retrieval with Tris/EDTA buffer pH 9.0 before commencing with IHC staining protocol.

Immunohistochemistry (Formalin/PFA-fixed paraffin-embedded sections) - Anti-Bcl G/BCL2L14 antibody [EPR17666] (ab184925)

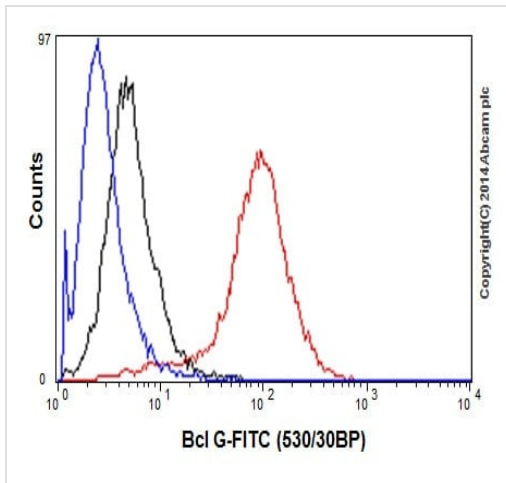


Immunohistochemical analysis of paraffin-embedded Rat colon tissue labeling Bcl G/BCL2L14 with ab184925 at 1/500 dilution followed by Goat Anti-Rabbit IgG H&L (HRP) ([ab97051](#)) secondary at 1/500 dilution. Cytoplasmic staining on glandular epithelium of rat colon is observed. Counter stained with Hematoxylin.

Negative control: Using PBS instead of primary antibody, secondary antibody is Goat Anti-Rabbit IgG H&L (HRP) ([ab97051](#)) at 1/500 dilution.

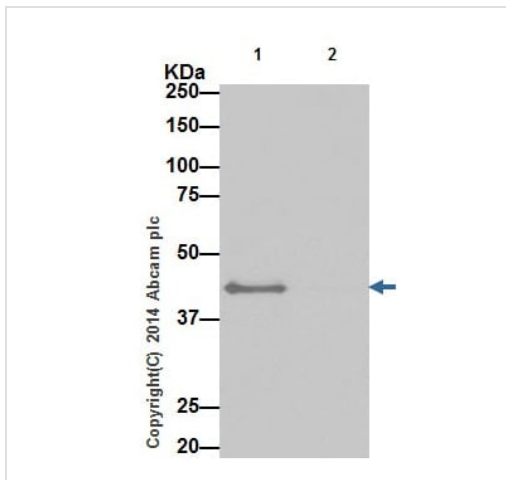
Perform heat mediated antigen retrieval with Tris/EDTA buffer pH 9.0 before commencing with IHC staining protocol.

Immunohistochemistry (Formalin/PFA-fixed paraffin-embedded sections) - Anti-Bcl G/BCL2L14 antibody [EPR17666] (ab184925)



Flow Cytometry (Intracellular) - Anti-Bcl G/BCL2L14 antibody [EPR17666] (ab184925)

Intracellular flow cytometric analysis of 2% paraformaldehyde-fixed Jurkat (Human T cell leukemia cells from peripheral blood) cells labeling Bcl G/BCL2L14 with ab184925 at 1/130 dilution (red) compared with a rabbit monoclonal IgG isotype control (black) and an unlabelled control (cells without incubation with primary antibody and secondary antibody; blue). Goat anti rabbit IgG (FITC) at 1/150 dilution was used as the secondary antibody.







Immunoprecipitation - Anti-Bcl G/BCL2L14 antibody [EPR17666] (ab184925)

Bcl G/BCL2L14 was immunoprecipitated from 1mg of HeLa (Human epithelial cells from cervix adenocarcinoma) whole cell extract with ab184925 at 1/40 dilution. Western blot was performed from the immunoprecipitate using ab184925 at 1/1000 dilution. Anti-Rabbit IgG (HRP), specific to the non-reduced form of IgG, was used as secondary antibody at 1/1500 dilution. Lane 1: HeLa whole cell extract. Lane 2: Rabbit monoclonal IgG (**ab172730**) instead of ab184925 in HeLa whole cell extract.

Blocking and dilution buffer and concentration: 5% NFDN/TBST.

Why choose a recombinant antibody?

 <p>Research with confidence Consistent and reproducible results</p>	 <p>Long-term and scalable supply Recombinant technology</p>
 <p>Success from the first experiment Confirmed specificity</p>	 <p>Ethical standards compliant Animal-free production</p>

Anti-Bcl G/BCL2L14 antibody [EPR17666]
(ab184925)

Please note: All products are "FOR RESEARCH USE ONLY. NOT FOR USE IN DIAGNOSTIC PROCEDURES"

Our Abpromise to you: Quality guaranteed and expert technical support

- Replacement or refund for products not performing as stated on the datasheet
- Valid for 12 months from date of delivery
- Response to your inquiry within 24 hours
- We provide support in Chinese, English, French, German, Japanese and Spanish
- Extensive multi-media technical resources to help you
- We investigate all quality concerns to ensure our products perform to the highest standards

If the product does not perform as described on this datasheet, we will offer a refund or replacement. For full details of the Abpromise, please visit <https://www.abcam.co.jp/abpromise> or contact our technical team.

Terms and conditions

- Guarantee only valid for products bought direct from Abcam or one of our authorized distributors